

Salina Airport Authority Board of Directors

Regular Meeting



Wednesday, August 20, 2025

Charting the course for global success.

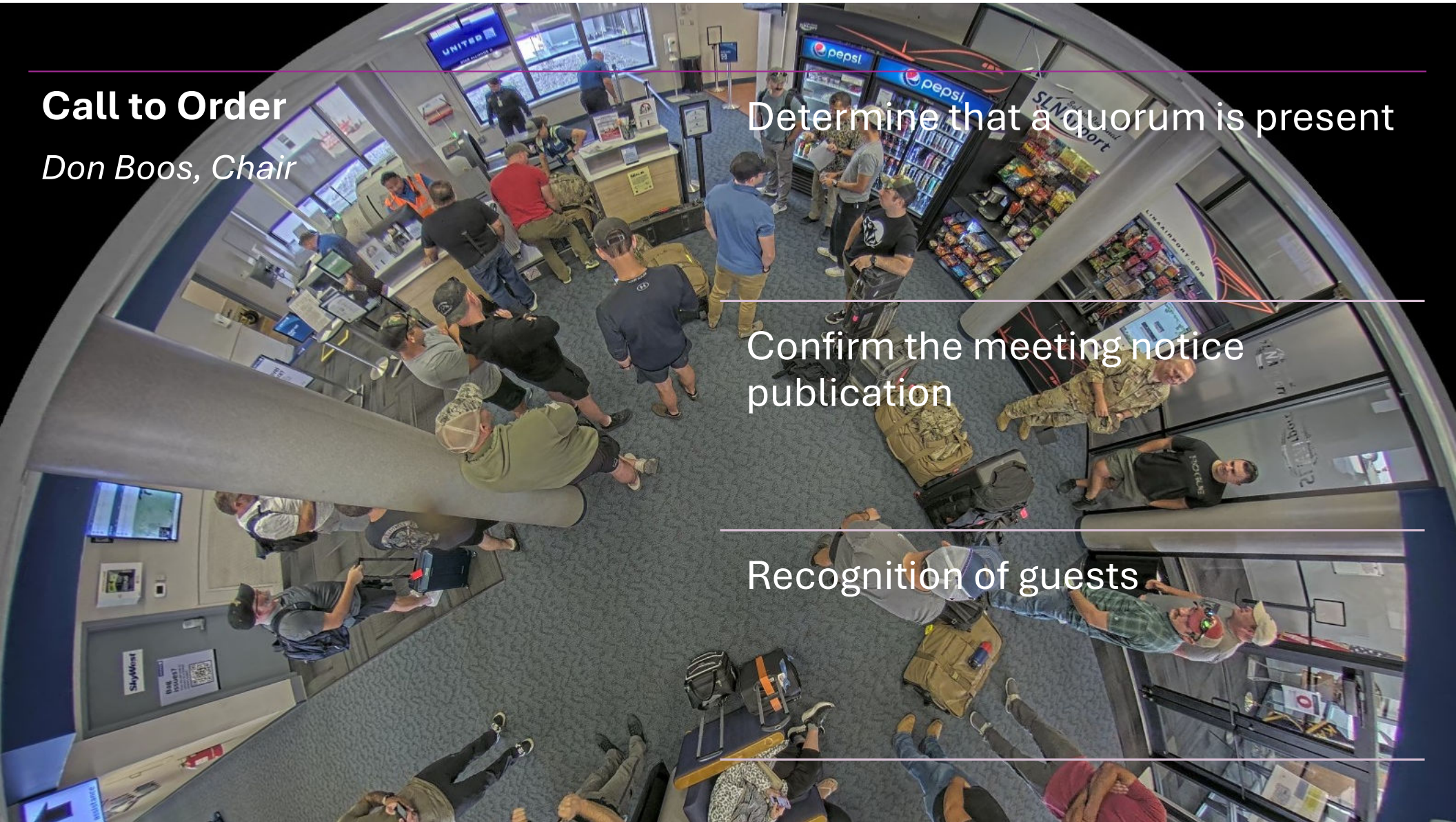
Call to Order

Don Boos, Chair

Determine that a quorum is present

Confirm the meeting notice publication

Recognition of guests





Approval

Minutes of July 16, 2025



Review

Airport Activity
Financial Reports
SAA's Q2 Trend Analysis and
STARS Lines of Effort
2025-A Go Bond Financing
Plan



Consider Operations

Staffing/Organization Plan
recommendations
2026 Mission Statement,
Operating Plan & Goals, and
Operating Revenue/Expense
Budget
Purchase Card Program Credit
Limit & Policy



Consider Agreements

Environmental Assessment
Consultant Agreement with
H.W. Lochner, Inc. for West
Airfield Development

- Salina Auto Auction Consent
to Assignment and
Assumption of Lease
- Terminal Building Expansion
Change Orders
- Hangar 125 tube heater
replacement



Executive Session

Confidential proprietary
information

- Airport Authority board action
following the executive
session is not expected to
occur.



Safety

Hangar 125 Tube Heater Replacement – Agenda Item #15

Supports Safety by replacing outdated, non-repairable heating equipment with modern systems to maintain safe, functional working conditions for tenants and protect stored aircraft and equipment.

Trust

Review of the 2025-A GO Bond Financing Plan – Agenda Item #7

Builds Trust by openly presenting the long-term financing strategy for major capital projects, showing fiscal responsibility, and ensuring transparency in how bond proceeds will be used.

SAA Purchase Card Program Credit Limit & Policy – Agenda Item #10

Reinforces Trust through strong internal controls and clear policy guidelines to safeguard public funds, prevent misuse, and maintain accountability in purchasing practices.

Adaptability

2026 Mission Statement, Operating Plan & Goals – Agenda Item #8

Shows Adaptability by updating strategic goals to reflect evolving industry conditions, regulatory requirements, and growth opportunities while staying aligned with the SAA mission.

Staffing/Organization Plan Recommendations – Agenda Item #9

Fits Adaptability because it realigns roles, adds new positions, and strengthens succession planning to meet changing operational demands and future growth needs.

Rooted in Community

Salina Auto Auction Lease Assignment or Sub-lease – Agenda Item #12

Rooted in Community by supporting local business continuity and keeping airport facilities actively contributing to the regional economy.

Environmental Assessment Agreement with H.W. Lochner – Agenda Item #11

Fits Rooted in Community because the EA is a critical step in responsible land development, ensuring that growth at the West Airfield is environmentally sound and aligned with community and regulatory expectations.

Success

Q2 Trend Analysis and STARS Lines of Effort Review - Agenda

Highlights Success by documenting completed milestones and measurable progress in capital improvements, infrastructure projects, and operational enhancements that benefit the airport's long-term growth.

Approval of Previous Minutes

Don Boos, Chair

*Minutes from July 16, 2025,
Regular Board Meeting*



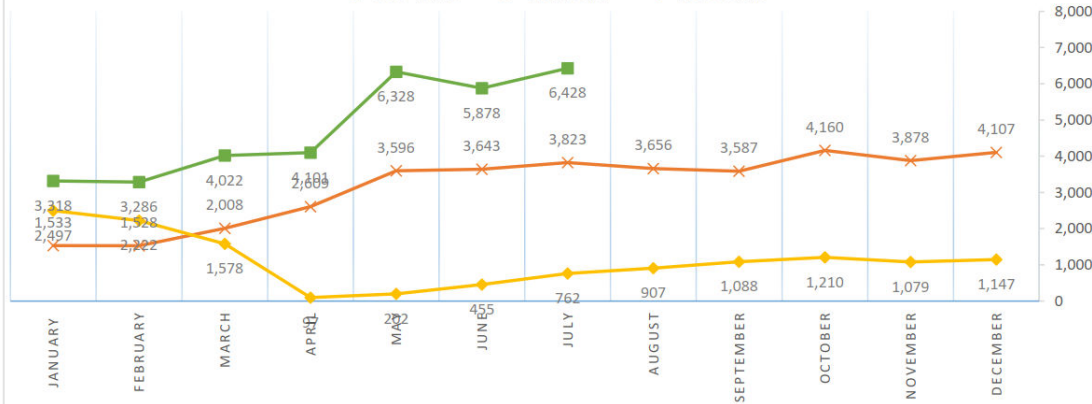
Airport Activity and Financial Reports

Shelli Swanson, C.M.

Pieter Miller, C.M.

TOTAL SLN PASSENGERS - PER MONTH

■ 2025 TOTAL × 2024 TOTAL ◆ 2019 TOTAL



* Per Pax subsidy based on prior 12 months

\$113.00

* Subsidy amount based on \$5,960,542/year effective July 1, 2023

* Total passengers - the total of enplaned and deplaned passengers at SLN

* Passenger numbers reported are unaudited by SKW and subject to change

Source: SkyWest Monthly Activity Report (Rev/Non-Rev Pax)

SALINA AIRPORT AUTHORITY AIRPORT ACTIVITY REPORT 2025

AIR TRAFFIC/ATCT

July, 2025	6,462 Operations 787 Instrument Operations 479 Peak Day
July, 2024	5,110 Operations 624 Instrument Operations 359 Peak Day
January 2025 - July 2025	39,948 Operations
January 2024 - July 2024	38,780 Operations
January 2023 - July 2023	30,043 Operations

FUEL FLOWAGE

July, 2025	221,194 Gallons
July, 2024	187,920 Gallons
January 2025 - July 2025	1,616,169 Gallons
January 2024 - July 2024	1,147,584 Gallons
January 2023 - July 2023	1,177,215 Gallons

SkyWest Airlines

	ENPLANEMENTS	DEPLANEMENTS	TOTAL
July, 2025	3,333 Passengers	3,095 Passengers	6,428
July, 2024	1,939 Passengers	1,884 Passengers	3,823
January 2025 - July 2025	16,938 Passengers		
January 2024 - July 2024	9,650 Passengers		
January 2023 - July 2023	9,250 Passengers		

ENPLANEMENTS - Charter Flights

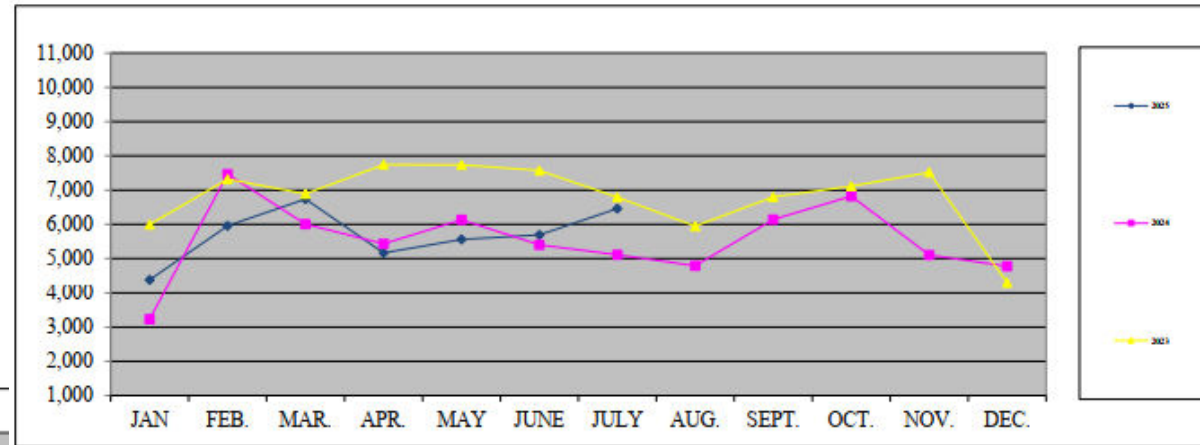
July, 2025	0 Passengers
July, 2024	0 Passengers
January 2025 - July 2025	4,326 Passengers
January 2024 - July 2024	1,314 Passengers
January 2023 - July 2023	462 Passengers

TOTAL ENPLANEMENTS - Scheduled Flights & Charter Flights

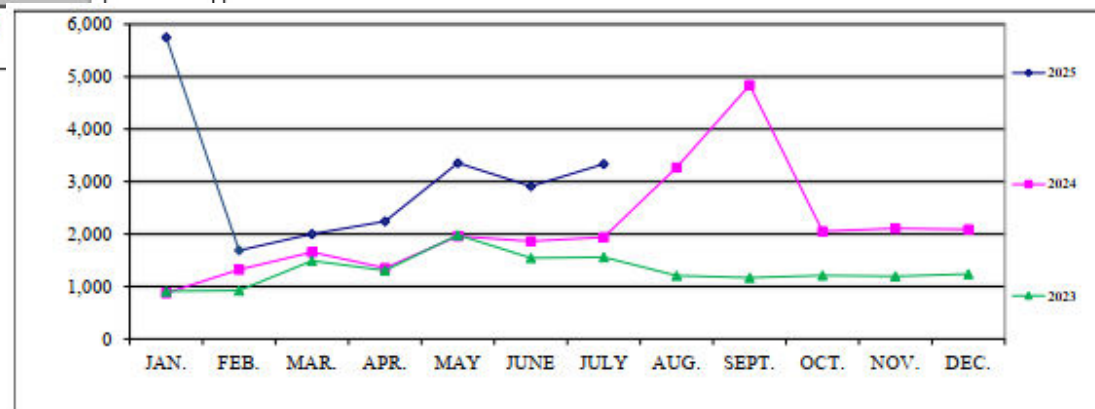
July, 2025	3,333 Passengers
July, 2024	1,939 Passengers
January 2025 - July 2025	21,264 Passengers
January 2024 - July 2024	10,964 Passengers
January 2023 - July 2023	9,712 Passengers

	Avflight	Avflight	Military/Gov't	Self-fuel
	KSU-S	Salina	Portion	Station
July, 2025	8,696	212,498	43,122	291
July, 2024	8,126	179,794	43,950	283
January 2025 - July 2025	59,710	1,556,459	508,932	2,164
January 2024 - July 2024	54,785	1,092,799	344,971	1,442
January 2023 - July 2023	76,021	1,101,194	328,553	1,800

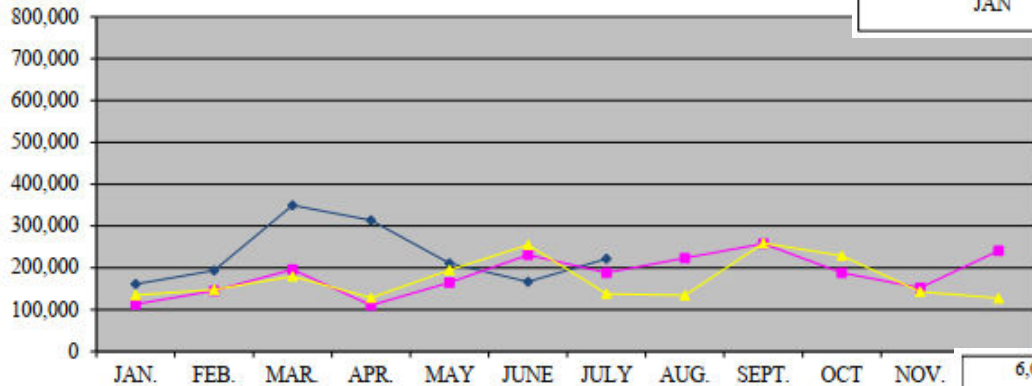
Air Traffic



Fuel Flowage



Enplanements





FINANCIAL STATEMENTS

July 2025



MOODY'S CREDIT OPINION - SALINA AIRPORT AUTHORITY, KS / 21 FEBRUARY 2025

Salina Airport Authority
Statement of Net Position Prev Year Comparison
As of July 31, 2025

08/15/2025

	<u>Jul 31, 25</u>	<u>Jun 30, 25</u>	<u>\$ Change</u>	<u>Jul 31, 24</u>	<u>\$ Change</u>	<u>% Change</u>
ASSETS						
Current Assets						
Total Checking/Savings	11,633,379	10,484,916	1,148,463	10,602,774	1,030,605	10%
Total Accounts Receivable	90,413	37,631	52,782	207,790	-117,377	-56%
Total Other Current Assets	1,430,515	1,663,410	-232,895	1,455,362	-24,847	-2%
Total Current Assets	13,154,307	12,185,957	968,350	12,265,926	888,381	7%
Fixed Assets						
Total Fixed Assets	72,073,233	72,158,887	-85,654	58,653,365	13,419,868	23%
Total Other Assets	5,387,538	5,387,538	0	5,509,217	-121,679	-2%
TOTAL ASSETS	<u>90,615,078</u>	<u>89,732,382</u>	<u>882,696</u>	<u>76,428,508</u>	<u>14,186,570</u>	<u>19%</u>
LIABILITIES & EQUITY						
Liabilities						
Total Current Liabilities	11,454,290	13,869,986	-2,415,696	10,813,431	640,859	6%
Total Long Term Liabilities	44,564,517	44,609,984	-45,467	37,741,984	6,822,533	18%
Total Liabilities	56,018,807	58,479,970	-2,461,163	48,555,415	7,463,392	15%
Total Equity	34,596,268	31,252,409	3,343,859	27,873,092	6,723,176	24%
TOTAL LIABILITIES & EQUITY	<u>90,615,078</u>	<u>89,732,382</u>	<u>882,696</u>	<u>76,428,507</u>	<u>14,186,571</u>	<u>19%</u>

Salina Airport Authority
Profit & Loss Prev Year Comparison
January through July 2025

3:16 PM
08/15/2025
Accrual Basis

	Jan - Jul 25	Jan - Jul 24	\$ Change	% Change
Ordinary Income/Expense				
Income				
Total Airfield revenue	1,184,174	841,657	342,517	41%
Total Building and land rent	1,108,169	1,048,452	59,717	6%
Total Other revenue	111,274	81,393	29,881	37%
Total Income	<u>2,403,617</u>	<u>1,971,502</u>	<u>432,115</u>	<u>22%</u>
Gross Profit	2,403,617	1,971,502	432,115	22%
Expense				
Total Administrative expenses	1,280,296	1,258,160	22,136	2%
Total Maintenance expenses	777,957	703,003	74,954	11%
Uncategorized Expenses	0	0	0	0%
Total Expense	<u>2,058,253</u>	<u>1,961,163</u>	<u>97,090</u>	<u>5%</u>
Net Ordinary Income	345,364	10,339	335,025	3,240%
Other Income/Expense				
Total Other Income	8,052,057	4,683,947	3,368,110	72%
Total Other Expense	4,149,351	3,282,246	867,105	26%
Net Other Income	<u>3,902,706</u>	<u>1,401,701</u>	<u>2,501,005</u>	<u>178%</u>
Net Income	<u><u>4,248,070</u></u>	<u><u>1,412,040</u></u>	<u><u>2,836,030</u></u>	<u><u>201%</u></u>

FINANCIAL

Salina Airport Authority Capital Additions Budget vs. Actual As of July 31, 2025

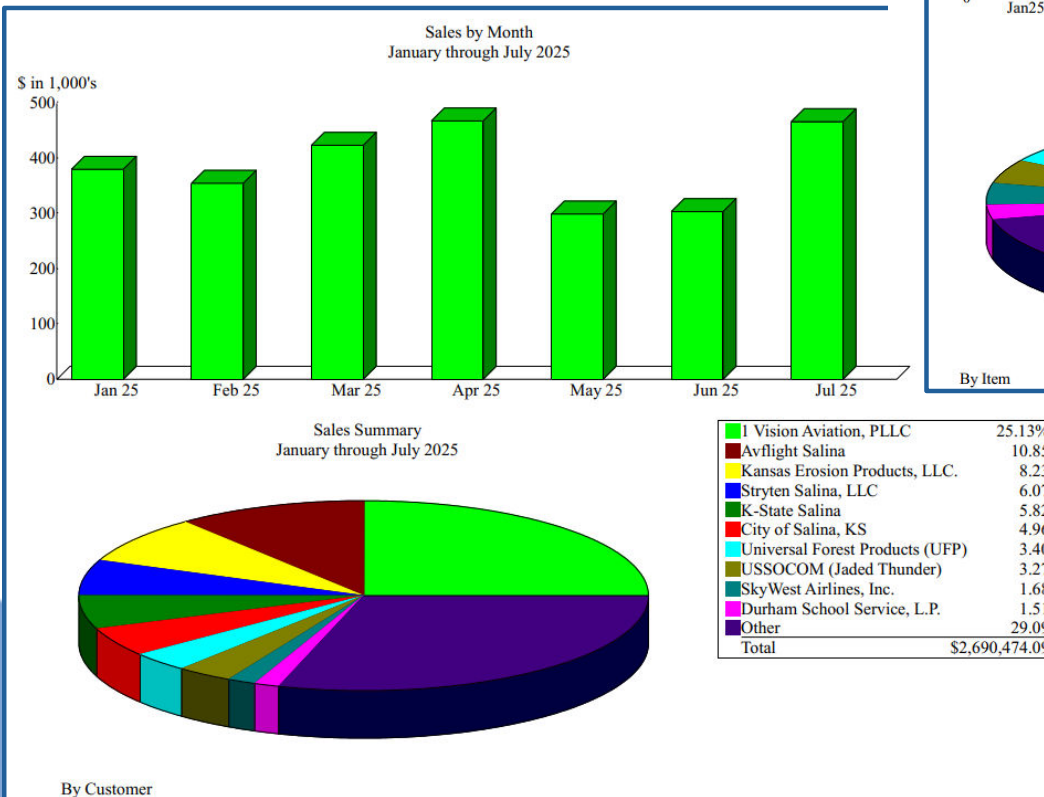
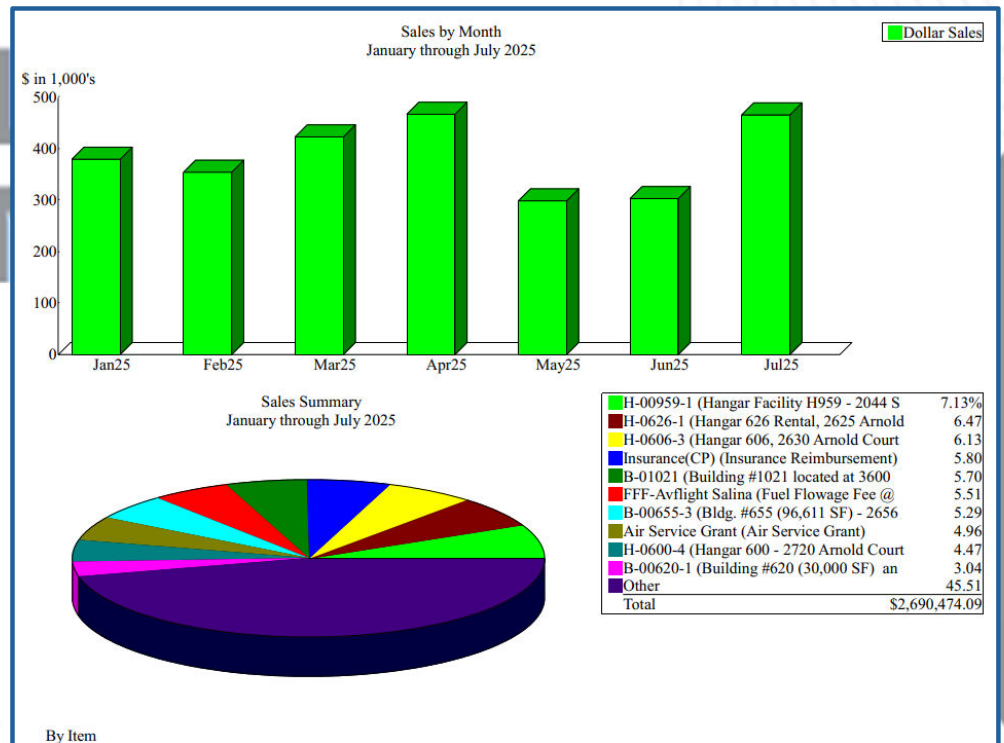
3:47 PM

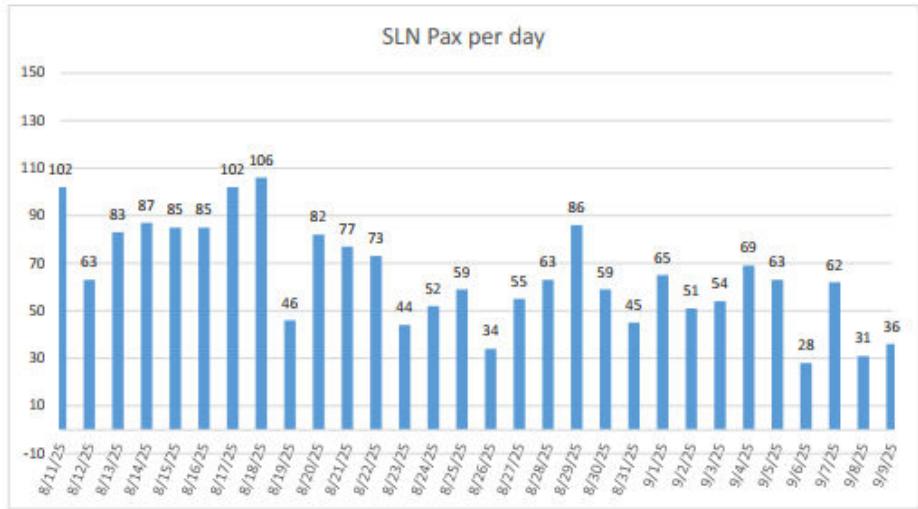
08/15/2025

Accrual Basis

	Jul 25	Jan - Jul 25	Annual Budget	+/- Annual Budget	% of Annual Budget
ASSETS					
Fixed Assets					
Fixed assets at cost					
Total Airfield	230,880	6,775,073	24,512,124	-17,737,051	28%
Total Buildings & Improvements	15,741	900,648	877,905	22,743	103%
Total Equipment	160	338,980	1,415,000	-1,076,020	24%
Total Land	900	2,552,288	5,630,000	-3,077,712	45%
Total Fixed assets at cost	247,681	10,566,989	32,435,029	-21,868,040	33%

FINANCIAL STATEMENT





"Flying Salina" Proving Popular

By Todd Pittenger • August 16, 2025

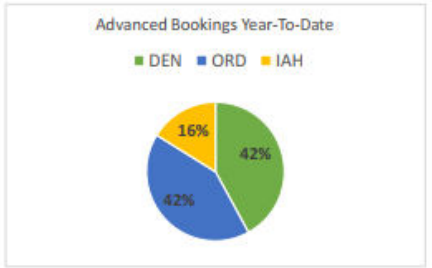
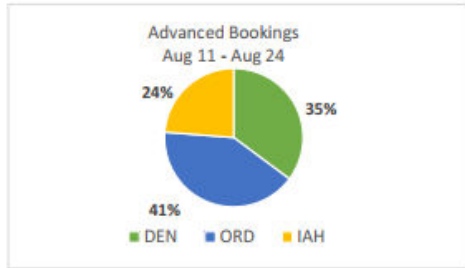
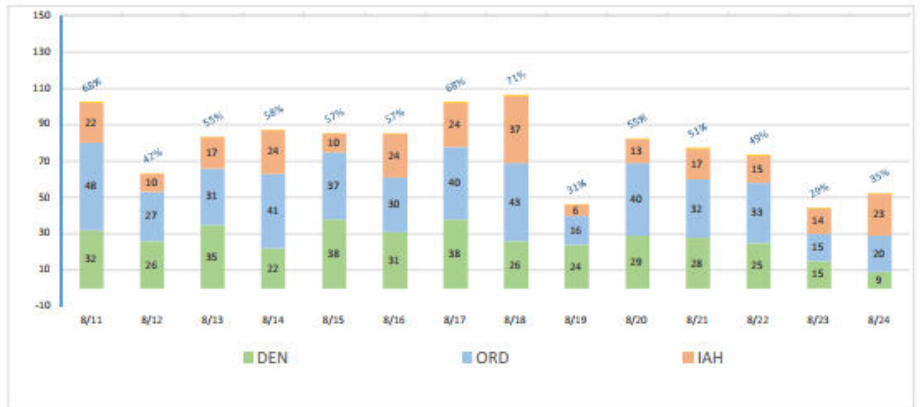


Passenger air service in and out of Salina, including the new Houston flights, continues to surpass expectations.

According to information from the Salina Airport Authority, passenger activity remained robust in July, with 3,333 enplanements. That's a 72% increase over July 2024, and more than double the July 2023 total.

8/19/25 - 8/31/25				
Flight #	Departure	From	To	Arrival
DEN 5109	6:40 a.m.	SLN (Salina)	DEN (Denver)	7:05 a.m.
ORD 5118	9:30 a.m.	SLN (Salina)	ORD (Chicago)	11:34 a.m.
IAH 5069	11:20 a.m.	SLN (Salina)	IAH (Houston)	1:30 p.m.
ORD 5108	4:50 p.m.	ORD (Chicago)	SLN (Salina)	6:49 p.m.
IAH 5060	6:50 p.m.	IAH (Houston)	SLN (Salina)	8:58 p.m.
DEN 5107	8:35 p.m.	DEN Denver	SLN (Salina)	10:59 p.m.

2025 SkyWest Airlines														
Advance Bookings - Enplanements														
Pax Comparison (DEN ORD and IAH)														
	Mon	Tue	Wed	Thu	Fri	Sat	Sun	Mon	Tue	Wed	Thu	Fri	Sat	Sun
	8/11	8/12	8/13	8/14	8/15	8/16	8/17	8/18	8/19	8/20	8/21	8/22	8/23	8/24
DEN	32	26	35	22	38	31	38	26	24	29	28	25	15	9
ORD	48	27	31	41	37	30	40	43	16	40	32	33	15	20
IAH	22	10	17	24	10	24	24	37	6	13	17	15	14	23
Total SLN Pax per day	102	63	83	87	85	85	102	106	46	82	77	73	44	52
SLN Load Factor	68%	42%	55%	58%	57%	57%	68%	71%	31%	55%	51%	49%	29%	35%
Total Load Factor (50 seats/flight)														



Review of the SAA's Q2 Trend Analysis and STARS Lines of Effort Update

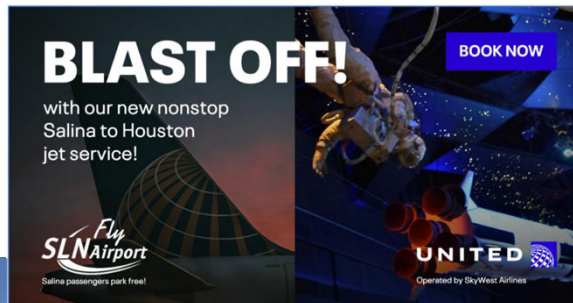
Pieter Miller, C.M.



2025 STARS Lines of Effort

Quarterly Report

24Q4	25Q1	25Q2	25Q3	25Q4	Item	Description
100%					a	AIM Center Room 111 Remodel and First Student Class
100%					b	AIM Center Tools and Equipment
90%	100%				c	SLN Fuel Farm Construction
100%					e	GA Hangar Construction
100%					g	SRE Specifications and Bids
100%					h	M.J. Kennedy Airport Terminal -Design
100%					n	FAA FAST Grant Application Award
	100%				p	2025 FAA Airport Certification Inspection
100%					r	H509 Restroom Improvements
100%					a-a	Engineering/Consultant Selection for 2025 – 2029 AIP Projects
60%	100%				f-f	2024-1 GO Temp Notes
100%					i-i	KS Air Service Development Grant
50%	100%				j-j	LAV Cart Dump Station



2025 STARS Lines of Effort

Quarterly Report

24Q4	25Q1	25Q2	25Q3	25Q4	Item	Description
50%	50%	95%			d	UST Removal and Closure
50%	55%	95%			f	Runway 12/30 Design, Construction
25%	30%	40%			i	M.J. Kennedy Airport Terminal - Construction
50%	55%	55%			j	North Ramp Hangar Construction – Project Design and Project Funding
25%	40%	50%			k	SLN West Airfield Development Plan
20%	20%	20%			l	AFFF Transition Plan
30%	32%	35%			m	Schilling Project RA Work
	25%	50%			o	2025 Fly SLN Marketing Campaign
	80%	100%			q	2025 FAA Airport Certification Inspection Corrections
20%	60%	100%			s	Economic Impact Report
5%	15%	20%			t	Airfield Security Cameras – ARFF Station, Fuel Farm, and H600
50%	55%				u	Industrial Center Warehouse Construction
85%	85%	100%			v	Build Back Kansas Grant Funding Applications
	10%	10%			w	B620 Improvements and Expansion Plans for UFP - Phase 2
	25%	50%			x	Coordinate FOL Events and Operations
	25%				y	2024 Financial Statement Audit
	10%	30%			z	2026 Budget Preparation
50%	60%	75%			b-b	Project AAERO
50%	75%	95%			c-c	Project 80 - Phase 1
	50%	50%			d-d	Project 80 - Phase 2
50%	95%	100%			e-e	H626 Parking lot plans & Construction
	10%	10%			g-g	2026 BIL / ATP Grant Application (Terminal building exterior)
10%	10%	10%			h-h	Airport Master Plan (AMP) update
	30%	75%			k-k	Website Update
	30%	100%			l-l	H724 / B820 Transfer
	15%	15%			m-m	Renewal of MAP Program
	5%				n-n	Title Opinion Update
	40%				o-o	Employee Handbook Update
	85%	100%			p-p	H125 BOTA Application
	20%	100%			q-q	Terminal Building Parking Lot Grant
	95%	100%			r-r	Terminal Building Parking Lot Design
	80%	100%			s-s	DBE Program Update
	25%	34%			t-t	KDOT Innovative Grant (H600, Vertiport)
	85%	90%			u-u	Helipoint to Vertiport Feasibility Study
		25%			v-v	SLN West EA
		50%			w-w	SAA Staffing Plan
		25%			x-x	Terminal furniture upgrade
					y-y	
					z-z	

Review of the 2025-A GO Bond Financing Plan

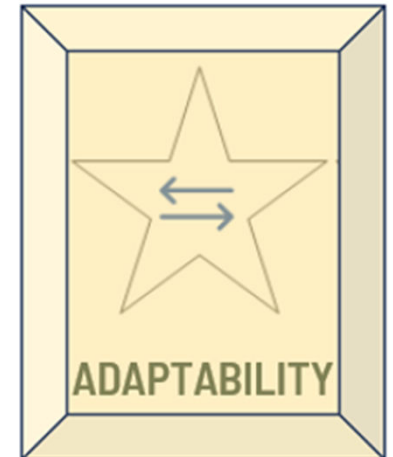
Shelli Swanson, C.M.

David Arteberry



Consideration of Staffing / Organization Plan Recommendations

Pieter Miller, C.M.
Shelli Swanson, C.M.
Lindsey Dreiling, PhD.





Salina Airport Authority

Staffing Study 2025



Collection of Current Roles & Activities

Staff members tracked daily activities & reviewed/updated position descriptions



Gap Identification

Staff members reviewed captured data, including daily, weekly & monthly activities, for duplicative tasks & areas for additional coverage



Future-state Org. Chart

Proposed how tasks could be grouped & aligned based on activity rather than titles



Timeline of Needs

Identified immediate & long-term growth opportunities



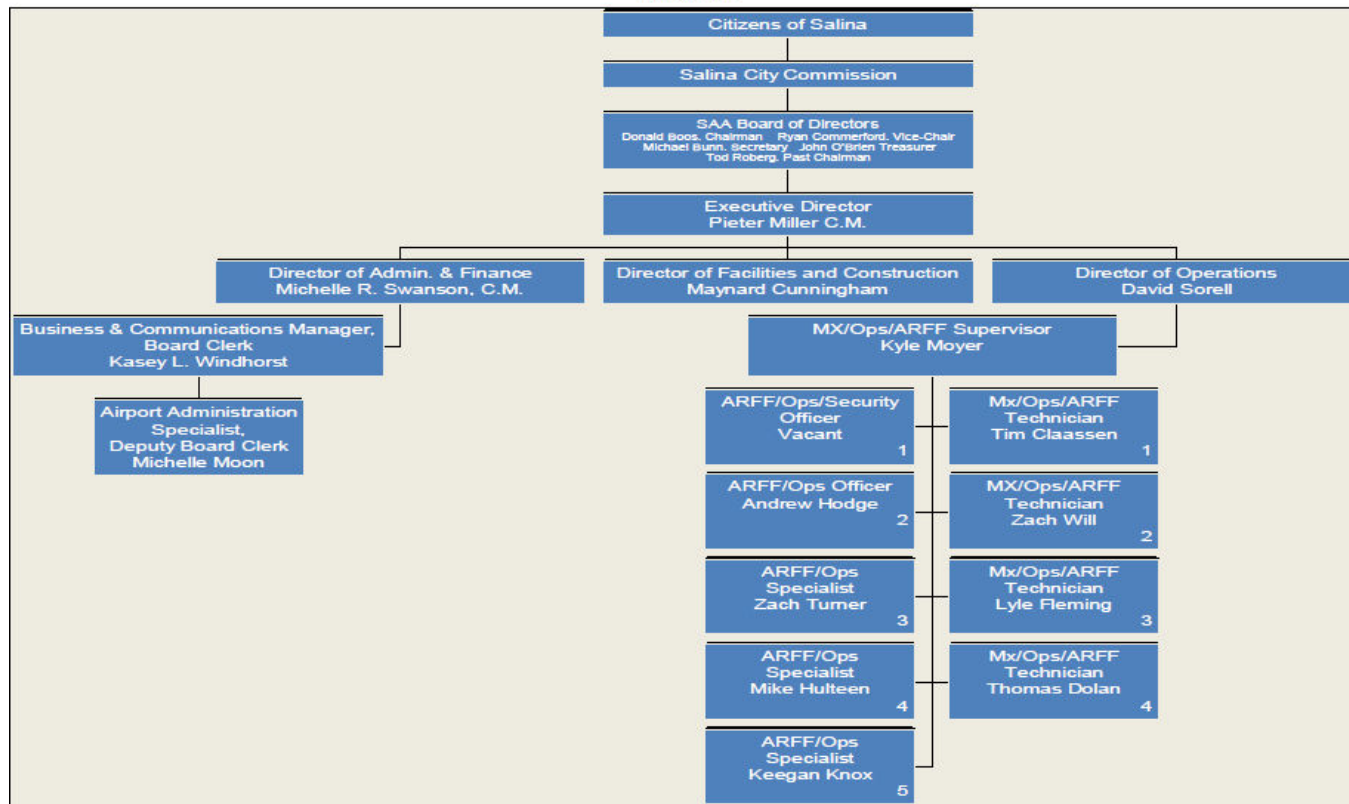
Methodology

Staff perspectives on their role, gaps they observed & improved organizational structure



Full-time Employees Organizational Chart

March 2025





Airport Growth Highlights

CAPITAL

~\$13.6M Total Expenditures Growth from 2014 to 2024
With an additional \$17.4M budgeted in 2025

ACTIVITIES

Increased line of efforts including
Eco Devo & Land Development (Project 80, Salina West)
Workforce development (AIM)
Innovation/ AAM (Project AAERO)

Airport Activity & Trends
Occupancy Rate: From 58% in 2014 to 94% in 2025
Expanded Footprint: Added 80-acre subdivision for lease
Additional Industrial Center Jobs: 1,700 (docking study)

*Actively evaluating future real estate acquisitions,
Continued growth increases properties & tenants
management needs

Areas of Growth: Staffing Activity

Immediate Staffing Need and/or
Consulting Support Need

1

Finance

Increase in total expenditures & activity,
as well as need for succession planning

2

Real Estate & Leasing

Increase occupancy rate, tenant
management needs & land development

3

Marketing & Communication

Increase in internal & external
stakeholders, community activities &
aviation training program

4

Executive Admin Support

Increase eco devo activities & national
leadership for AAM innovation

Implementation Strategy:

Immediate Needs Met with Low Risk



Staffing Timeline 2025-2026

Staffing	3rd Quarter	4th Quarter	1st Quarter	2nd Quarter
Internal Positions	Reassign Duties & Update PDs		Continually Tracking growth & Staffing Needs (i.e. Contract Work, Part-time & Full-time)	
(Replacement) Director of Admin & Finance		Recruitment	Cross-training & Onboarding	
(NEW) Real-Estate & Marketing Professional			Recruitment	Onboarding
Re-evaluate Contracts & Plus up as needed			Review Contracts: Workforce Development, Marketing & Comms, Strategy & Innovation	
DAS	Staffing Checkpoint - Analysis of Needs			



Employees Proposed Organizational Chart August 2025

Citizens of Salina
Salina City Commission
SAA Board of Directors
Executive Director

Director of
Administration &
Finance

Director of Facilities
& Construction

Director of
Operations

(NEW)
Real Estate &
Leasing Manager

Business &
Communications
Manager

MX/Ops/ ARFF
Supervisor

Airport Administration &
Finance Specialist

ARFF
Team (5)

Mx/Ops/ ARFF
Team (4)

CONTRACT WORK:
Airport Engineering
Complex IT
Heavy Maintenance
Workforce Development
Marketing & Communication
Strategic Initiatives & Innovation

LEGEND

NEW HIRE -----

Increase Contracts



Potential Employees Proposed Organizational Chart (*IF full-time positions needed)

Citizens of Salina
Salina City Commission
SAA Board of Directors
Executive Director

Director of
Administration &
Finance

(Potential Director Path & Title
Change)
Business Marketing &
Communications Manager

Director of Facilities
& Construction

Director of
Operations

MX/Ops/ ARFF
Supervisor

ARFF
Team (5)

Mx/Ops/ ARFF
Team (4)

(NEW)
Real Estate &
Leasing Manager

(Title Change) Airport
Administration & Finance
Specialist

(NEW)
Administration & Finance
Specialist

CONTRACT WORK:
Airport Engineering
Complex IT
Heavy Maintenance
Workforce Development
Marketing & Communication
Strategic Initiatives & Innovation

LEGEND

NEW HIRE -----

Internal Change -----

FUTURE AREAS OF GROWTH

Tracking Potential Near-term (under 5 years) Staffing Needs & Support

Salina
Airport
Authority
Activities



S

e
a
s
o
n
a
l
/
P
a
r
t
-
t
i
m
e
A
i
r
f
i
e
l



Outcome

STAFFING SUMMARY

- Cross-train Current Staff, Align Responsibilities & Update Position Descriptions
- Hire Shelli's Replacement
- Hire New Real Estate Position
- Increase Contracts as needed for Workforce Development, Marketing & Communication, etc.
- Re-evaluate Needs once New Team Members are On-boarded

Review and Consideration

of the SAA's 2026 Mission Statement, Operating Plan & Goals, and Operating Revenue/Expense Budget

Pieter Miller, C.M.

Shelli Swanson, C.M.





Consideration of SAA Purchase Card Program

Credit Limit & Policy

Shelli Swanson, C.M.

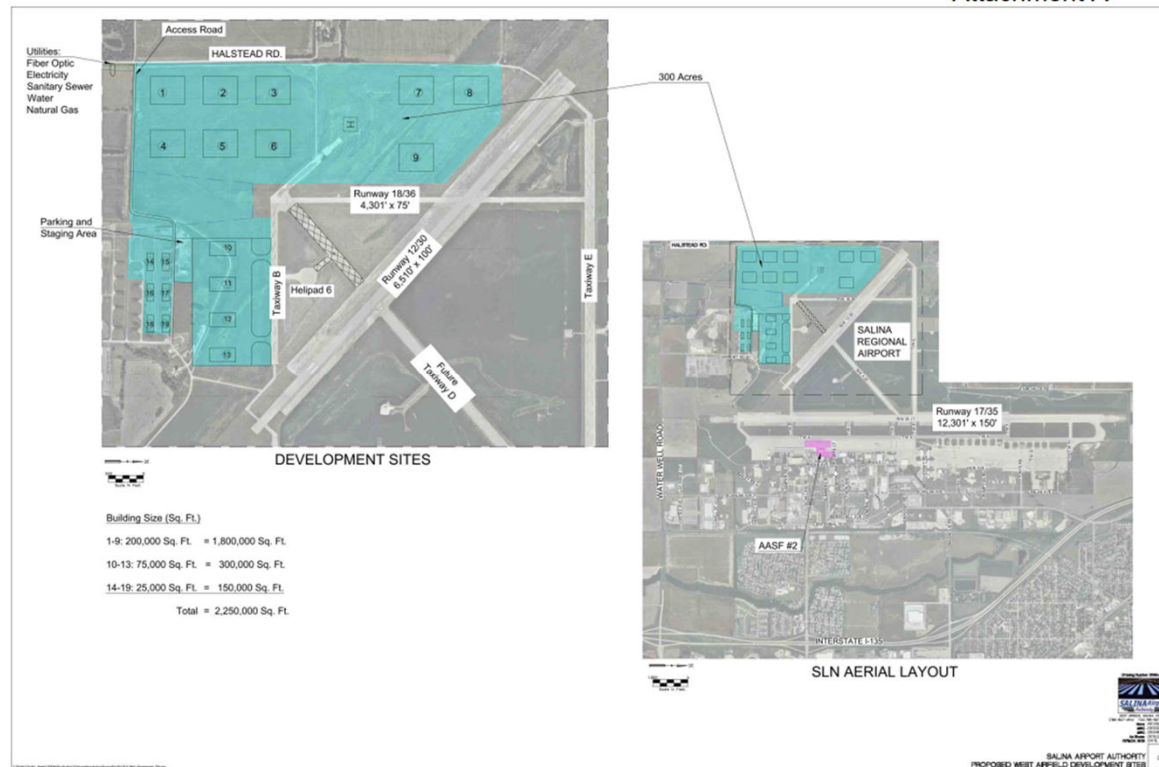


Consideration and Approval

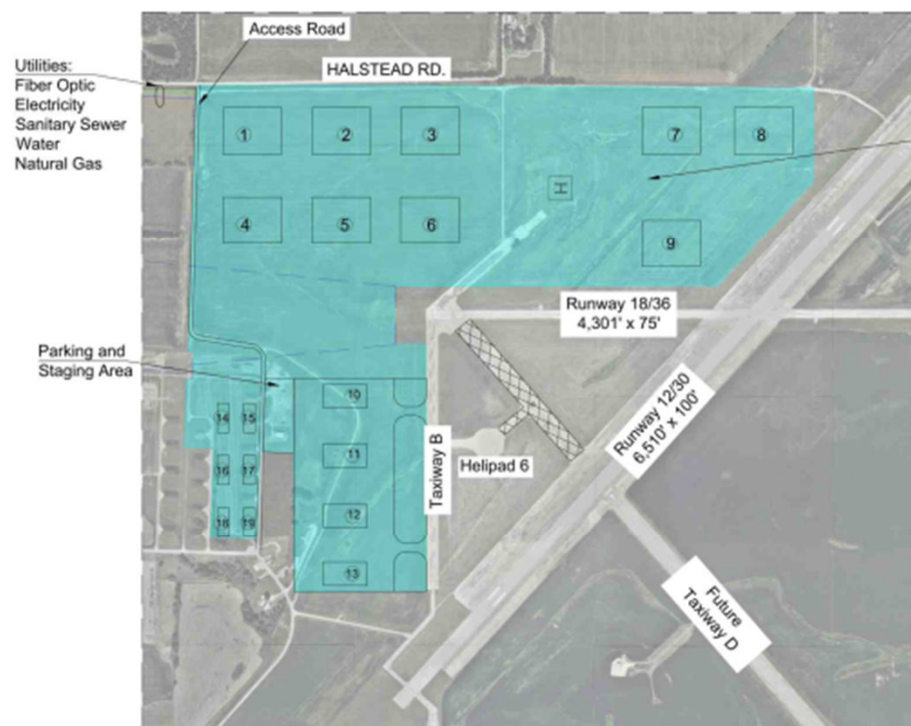
of the Environmental Assessment Consultant Agreement with H.W. Lochner, Inc. for West Airfield Development

Pieter Miller, C.M.

Attachment A



Attachment A



DEVELOPMENT SITES

Building Size (Sq. Ft.)

1-9: 200,000 Sq. Ft. = 1,800,000 Sq. Ft.

10-13: 75,000 Sq. Ft. = 300,000 Sq. Ft.

14-19: 25,000 Sq. Ft. = 150,000 Sq. Ft.

Total = 2,250,000 Sq. Ft.

The EA will evaluate potential environmental impacts of planned improvements; coordinate with federal, state, and local resource agencies; field investigations; public and tribal consultation; and prepare NEPA documentation for FAA review.

The scope of work: analysis of affected environmental categories; land use compatibility, water quality, wetlands, endangered species, historic resources, and hazardous materials.

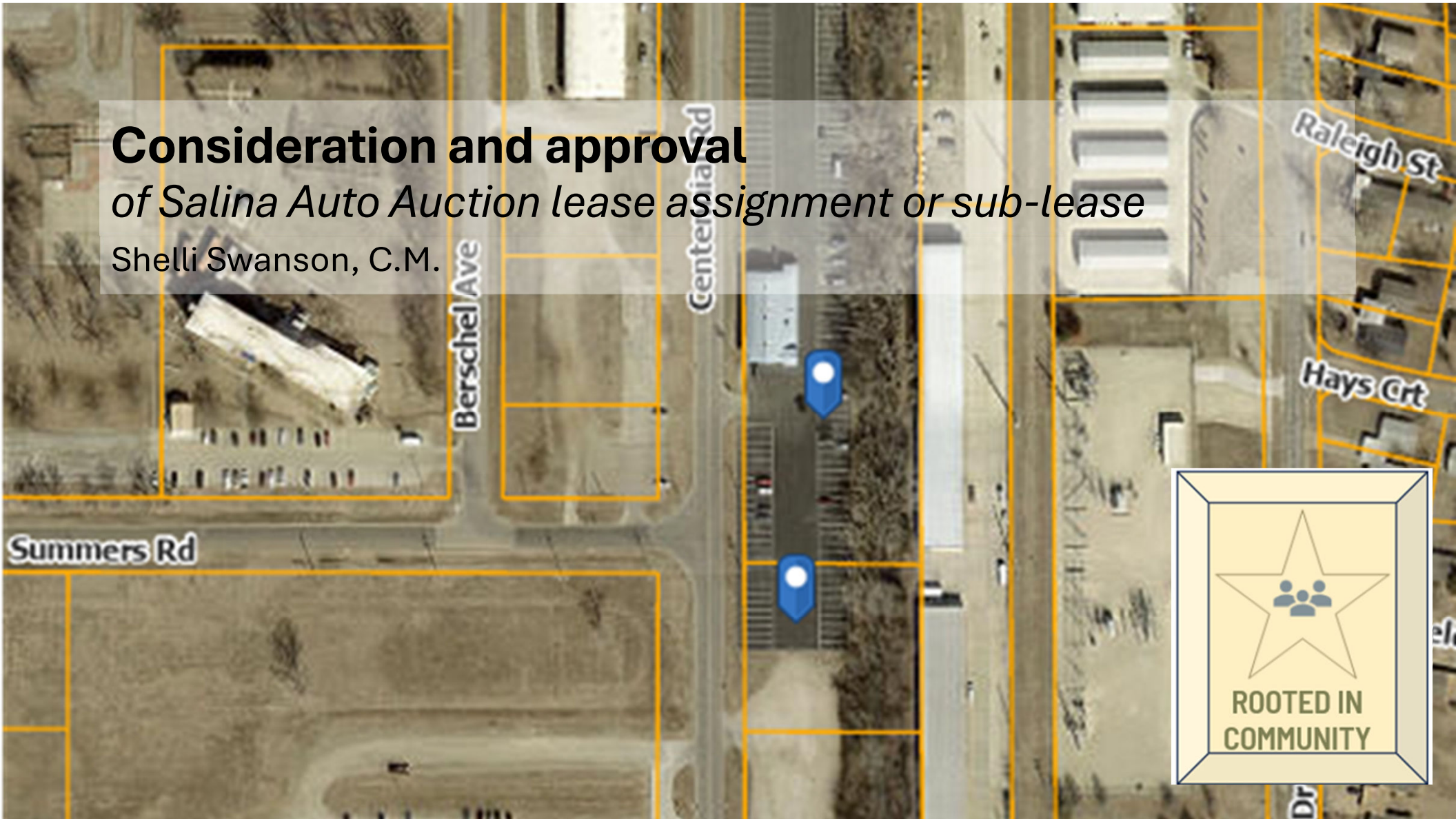
The contract amount is \$150,163 (lump sum), with additional services to be authorized if required by the FAA during the review process.

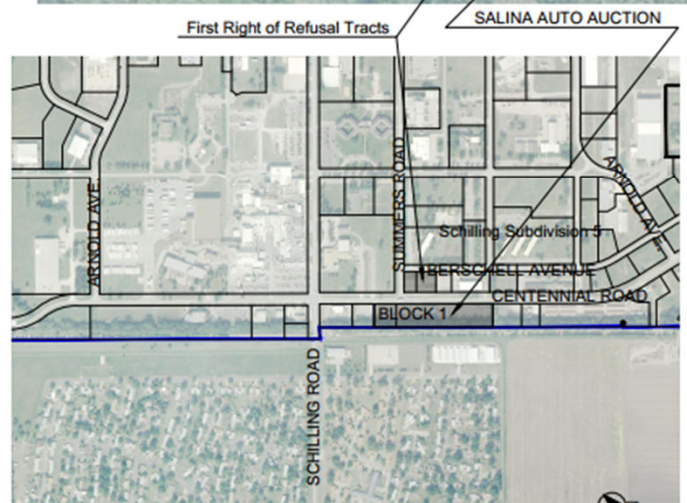
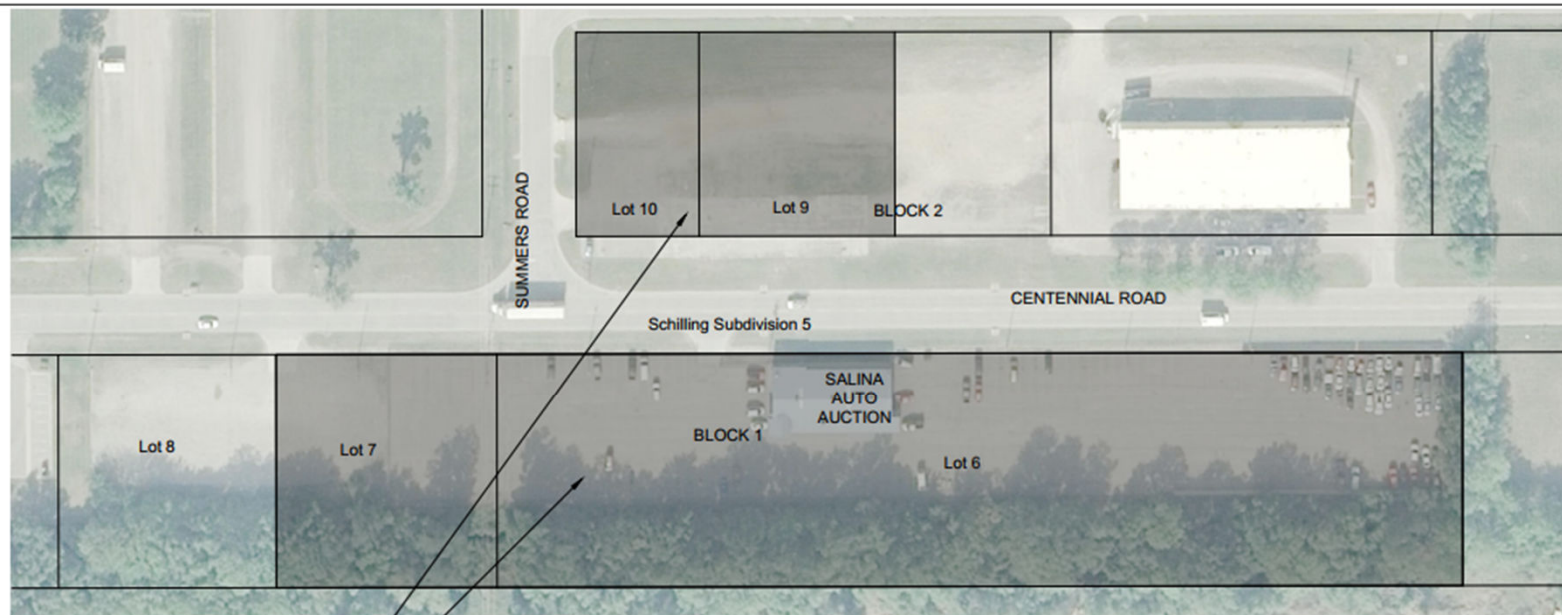
To offset the cost of the EA, the Airport Authority is applying for a State of Kansas grant.

This project is a critical first step in advancing the West Airfield Development.

Consideration and approval *of Salina Auto Auction lease assignment or sub-lease*

Shelli Swanson, C.M.





Location Map

Scale 1"=1000'

Leased Premises:

A Tract of Land Described as Follows.
Lots 6, and 7, Block 1, Schilling
Subdivision No. 5, Salina, Saline County,
Kansas.

Said Tracts are:

163,758.7 S.F. Lot 6
37,432.99 S.F. Lot 7

201,191.7 S.F. or 4.62 Acres Total

First Right of Refusal Tract:

A Tract of Land Described as Follows.
Lots 9 and 10, Block 2, Schilling
Subdivision No. 5, Salina, Saline County,
Kansas.

Said Tracts are:

28,998 S.F. Lot 9
18,232 S.F. Lot 10

47,230 S.F. or 1.084 Acres Total



Drawing Number 3276-08-25



3237 ARNOLD, SALINA, KS 67401
(785-827-3914 FAX: 785-827-2221)

Updated : REVISIONS

UNFO : DESIGNED BY

UNFO : DRAWN BY

As Shown : SCALE

08/18/25, 9:00 : DATE

SALINA AIRPORT AUTHORITY
Salina Auto Auction - Exhibit A - 2025 Lease Assignment

1
OF
1

SAA, LLC is acquiring the business assets of Salina Auto Auction

- desires to continue operations at Building 496 and
- assume the existing lease.

The 2011 Lease requires prior written consent from the Authority for any assignment or sublease;

Consent to Assignment and Assumption of Lease and First Lease Amendment.

The First Lease Amendment also clarifies environmental responsibilities.

As a condition of consent, SAA, LLC agrees to these environmental obligations (Section 5 "Environmental Concerns") retroactive to March 1, 1970.

The Assignment and Assumption of Lease instrument includes

a release of the Assignor (Salina Auto Auction, Inc.) from lease obligations as of the effective assignment date, with SAA, LLC.

Drawing Number 3276-08-25



3237 ARNOLD, SALINA, KS 67401
(785)-827-3914 FAX: 785-827-2221
Updated : REVISIONS
MWC : DESIGNED BY
MWC : DRAWN BY
As Shown : SCALE
08/18/2010 : DATE



Consideration and approval *of Terminal Building Change Orders*

Pieter Miller, C.M.

Change Order #3 – Concourse Roof Drainage

Adds proper roof drainage for the portion of the existing passenger concourse roof located between the new TSA screening area and new baggage handling area expansions.

- *Purpose:* Prevents water accumulation and potential structural or maintenance issues.
- *Total:* \$25,714.00

Change Order #4 – Gate Podium Removal

Removes fabrication and installation of SkyWest gate podiums from the contract. SkyWest will provide the podiums directly.

- *Purpose:* Eliminates duplicate procurement and reduces project cost.
- *Total:* –\$11,560.00

Change Order #5 – Passenger Hold Room Footing

Addresses inadequate soil bearing strength at the planned footing depth. Excavation was extended to reach acceptable strength, with Controlled Low-Strength Material (CLSM) used to fill the additional depth.

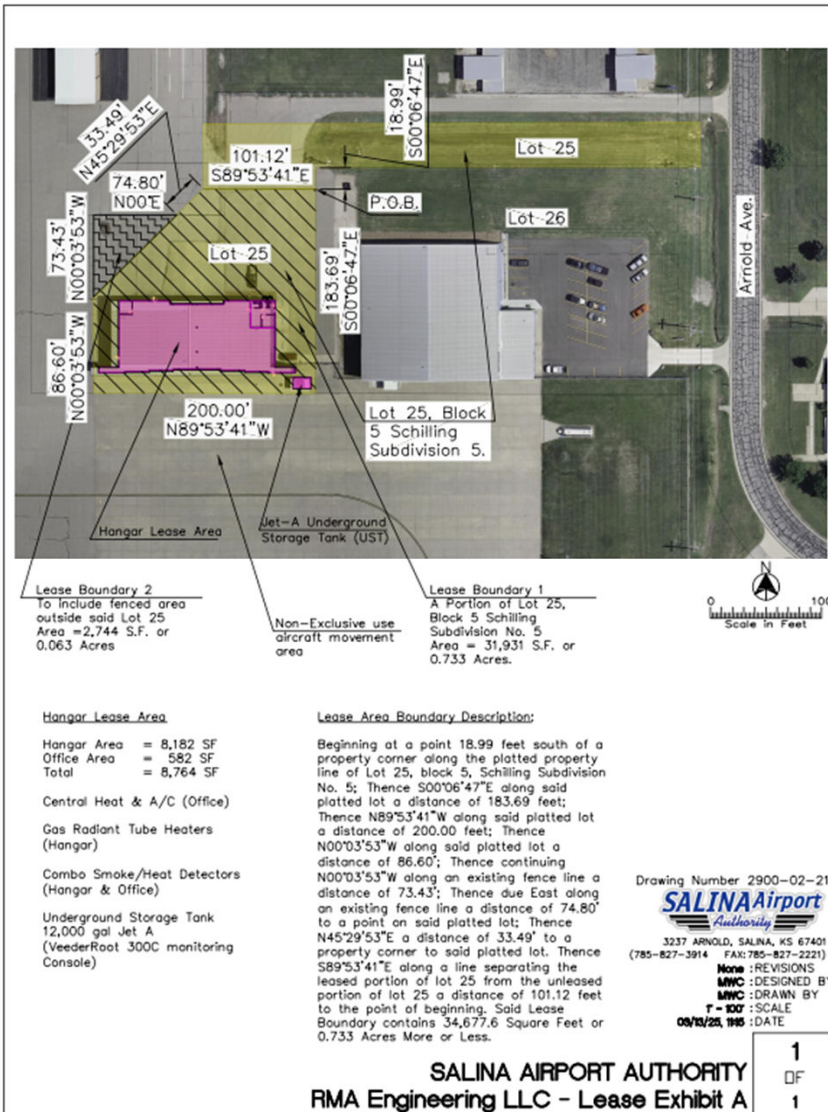
- *Purpose:* Foundation stability and compliance with structural specifications.
- *Total:* \$27,459.20

CHANGE ORDER LINE ITEMS

#	Description	Amount
3	Roofing at Existing Concourse	\$23,000.00
	GC Insurance (1.00%):	\$230.00
	Fee (10.00%):	\$2,300.00
	Bond (0.80%):	\$184.00
	Total:	\$25,714.00
4	Removal of hold room gate podiums from scope of work	(\$11,560.00)
5	Provide and install additional item P-153 Controlled Low-Strength Material (CLSM) (flowable fill) from bottom of hold room footings extending 14" down into the native soil to find suitable soil bearing strength	\$24,561.00
	GC Insurance (1.00%):	\$245.61
	Fee (10.00%):	\$2,456.10
	Bond (0.80%):	\$196.49
	Grand Total:	\$27,459.20

Consideration and approval of Hangar 125 tube heater replacement

Pieter Miller, C.M.



Bid Tabulation		
Project:	Hangar 125 Tube Heaters	
	Tube Heater Replacement	
Sponsor:	Salina Airport Authority	
Contractor:	Callabresi	Pestinger
Tube Heaters	\$27,104	\$26,591
Two Stage Burners(adder)	n/a	\$1,430
Total	\$27,104	\$28,021
Recommendation		X

Staff Reports: Terminal Building Update

Pieter Miller, C.M.

Maynard Cunningham

Website Update

Pieter Miller, C.M.

Kasey Windhorst





EXECUTIVE SESSION

AN EXECUTIVE SESSION OF THE BOARD OF DIRECTORS TO DISCUSS CONFIDENTIAL PROPRIETARY INFORMATION RELATING TO FINANCIAL AFFAIRS OF CORPORATIONS.

AIRPORT AUTHORITY BOARD ACTION FOLLOWING THE EXECUTIVE SESSION IS NOT EXPECTED TO OCCUR.

Live link will resume
following Executive Session

Directors' Forum

Don Boos, Chair





Visitor's Questions and Comments

Don Boos, Chair

Announcements

Kasey Windhorst

Board Meetings

- **Wednesday, September 3, 2025, 4:00 p.m. Special Board Meeting**
- Wednesday, September 17, 2025, 8:00 a.m. Regular Board Meeting
- Wednesday, October 15, 2025, 8:00 a.m. Regular Board Meeting
- Wednesday, November 19, 2025, 8:00 a.m. Regular Board Meeting
- Wednesday, December 3, 2025, 8:00 a.m. Special Board Meeting
- Wednesday, December 17, 2025, 8:00 a.m. Regular Board Meeting

Fly Kansas Air Tour

- September 23 – 26, 2025

2025 FLY KANSAS AIR TOUR

September 23–26, 2025

Mark your calendars! The Fly Kansas Air Tour is back, bringing aviation excitement and hands-on STEM learning to communities across Kansas.

This year's tour kicks off the evening of **Tuesday, September 23, in Wellington** and continues through **Friday, September 26**, with stops in **Wellington, Anthony, Strother Field, Augusta, Eureka, Parsons, Emporia, Herington, and Salina**. Each stop features interactive STEM activities for students, community events, and the thrill of seeing the tour aircraft up close.

Let's kick the tires and light the fires—see you in September!

Highlights include:

- STEM-focused events each morning and afternoon
- Community gatherings and picnics
- Opportunities to meet pilots and learn about aviation careers

Adjournment

Don Boos, Chair

