

Salina Regional Airport and Airport Industrial Area Overview

By
Timothy Rogers. A.A.E.
Executive Director
Salina Airport Authority



SAFETY



TRUST



ADAPTABILITY



ROOTED IN
COMMUNITY



SUCCESS

Salina's growing economy.

Salina Area Chamber of Commerce

Saline County GDP grew by \$341 million in 2021; Salina sees first population increase in almost a decade

Feb 21, 2023 — 2 min read

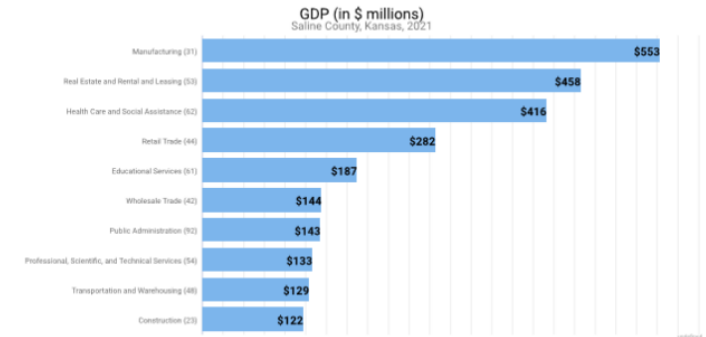
Gross Domestic Product

Gross Domestic Product (GDP) is the total value of goods and services produced by a region. In 2021, nominal GDP Saline County, Kansas expanded 12.4%. This follows a contraction of 1.1% in 2020. As of 2021, total GDP in Saline County, Kansas was \$3,087,082,000.



Gross Domestic Product data are provided by the Bureau of Economic Analysis, imputed by Chmura where necessary, updated through 2021.

Of the sectors in Saline County, Kansas, Manufacturing contributed the largest portion of GDP in 2021, \$553,252,000. The next-largest contributions came from Real Estate and Rental and Leasing (\$457,782,000); Health Care and Social Assistance (\$416,223,000); and Retail Trade (\$281,850,000).



Gross Domestic Product data are provided by the Bureau of Economic Analysis, imputed by Chmura where necessary, updated through 2021.

While other Kansas counties saw growth, comparatively Saline County saw the highest percentage change in growth. Shawnee County (Topeka) GDP went up 10.2 percent, Sedgwick County (Wichita) increased by 9.1 percent, Riley County (Manhattan) by 8.7 percent, and Reno County (Hutchinson) by 8.6 percent. Saline County's economy did contract in 2020 by 1.1 percent during the height of business shutdowns, after seeing incremental gains in 2018 and 2019 of 3.3 percent and 2.1 percent growth, respectively. The drastic growth seems to be indicative of high demands for goods and services, including housing and retail trade. Manufacturing, real estate, health care, and retail trade make up over 55 percent of the GDP for the County.

Housing Growth

Identified housing need – The 2022 City of Salina housing study has projected 1,357 units needed by 2025. The housing study projected that owner-occupied vs. renter-occupied need to be exactly 50/50 (678 each).

Subdivisions currently underway – TOTAL UNITS: ~450

- South View Estates- 42 single family homes, and 66 townhome units, \$190-\$225k range
- Aero Plains- 150 townhome units, \$225-\$250k range
- Cedar Ridge (Phase II)- 14 units, \$250-\$350k range
- Cedar Point- 22 units, \$300k+ range
- Magnolia Hills (Phase II)- 16 units, \$250k+ range
- Stone Lake (Phase III)- 45 units- mix of owner-occupied houses and 2 apartment buildings, \$250k+ for homes*
- Wheatland Valley (Phase 1)- 27 units, \$185k-\$250k range
- Community Housing Development Project- 50-100 units of higher density, workforce housing

Apartment complex development underway – TOTAL UNITS: ~630

- Lee Lofts (Phase II)- 80 units, market rate
- State of Kansas Grant (Developer Agreement underway)- 500 units, market rate
- Del Ray Mobile Home Park- 50 units, all new park with new units, \$625/mo.

A growing list of
businesses and
organizations.

BUSINESSES and ORGANIZATIONS

* Tenants



- * 1 Vision Aviation
- * A+ Aviation Services
- * Ag Services
- * ARINC Inc./Collins Aerospace
- * Avflight Salina Corporation
- * Blue Beacon International Flight Department
- * Bombardier - Learjet, Inc.
- * Central States Enterprises
- * Centurion Aviation
- * Civil Air Patrol

- * Crop Service Center
- * Enterprise Rent-A-Car
- * Federal Aviation Administration
- * Ft. Riley, KS
- * Garmin International
- * Heinen Brothers
- * Hertz / LAG Rentals
- * Houser Custom Ag, Inc.
- * Jet Stream
- * Kansas Army National Guard AASF #2
- * Kansas State University Salina Aerospace and Technology Campus

- * Midwest Air Traffic Control Services
- * Plains Environmental
- * Planemasters, Ltd
- * RMA Engineering
- * Safari, Inc.
- * Salina Aircraft Services
- * Schilling Aviation Services
- * SkyWest Airlines d/b/a United Airlines
- * Transportation Security Administration
- * Tyree Ag



- * Access Storage, Inc.
- * Accurate Electric
- * Airport Apartments
- * All Saints Orthodox Christian Church
- * Alltell Newco No. 4, LLC
- * APAC
- * Automation & Controls Integration
- * Belcher Industries
- * Berry Material Handling
- * Bimbo Bakeries
- * Boretac LLC
- * Brown Farms
- * Callabresi Heating & Cooling
- * Cash-Wa Direct
- * Century Business Systems
- * Choices Network, Inc.
- * City of Salina
- * City Wide Self Storage
- * Classics Auto Body
- * Cross-Midwest Tire Co.
- * Davis Automotive & Towing
- * Daws, Inc.
- * Dragoon Corporation
- * Durham School Services
- * Enel Green Power
- * Exapta Solutions, Inc.
- * FedEx Express
- * FedEx Freight
- * Flotration Technologies
- * Forbes Bros. Timberline Const., Inc.
- * Gartner Refrigeration
- * Geocore, LLC
- * Geoprobe Systems
- * Girl Scouts
- * GT Midwest

- * Harbin Construction
- * Heineken Electric
- * Hutton Construction
- * IBT Industrial Solutions
- * J & R Enterprises
- * Kansas Erosion Products, LLC
- * Kansas Highway Patrol
- * Kansas National Guard
- * KO Storage
- * L & R Farms
- * L & S Builders
- * Laas Farms
- * Luminous Neon Art & Design Systems
- * Matrix Electronic Measuring, Inc.
- * McIntire Welding
- * Midwest Concrete
- * Milenium, Inc.
- * Nex-Tech
- * Oards Auto Repair
- * Occupational Center of Central Kansas (OCCCK, Inc.)
- * Ovation Cabinetry, Inc.
- * Penske Truck Leasing
- * Pestinger Distributing Co.
- * Power Ad Company
- * Precision Machine & Welding
- * Quivera Gun Club
- * Salina Adult Education (USD 305)
- * Salina Area Technical College
- * Salina Auto Auction
- * Salina Machine
- * Salina Mini Storage
- * Salina Rescue Mission
- * Salina Vortex Corporation
- * Salina Waste Systems, Inc.
- * Saline County Bird Dog Assoc.

- * Saline County Shops
- * Schwans Company
- * Scientific Engineering
- * Sherwin Williams
- * Smoky Hill Winery
- * Smoky Hill, L.L.C.
- * Snak-Atak
- * Solution Outreach Center (OCCCK, Inc.)
- * South Industrial Welding, Fabrication, Installation
- * Specialized Metal Fab
- * State of Kansas Drivers License Office
- * Storage Mart
- * Stryten Salina
- * Suda, Inc.
- * Sunflower Restaurant Supply
- * Superior Contracting & Manufacturing Services
- * Superior Plumbing & Heating Co.
- * Superior Pump & Electric Motor Service
- * Syring Golf
- * T & R Dirt Construction
- * Tool Time
- * Triangle Trucking
- * Turbocharger Solutions International
- * Unifirst
- * United Rentals, LLC
- * Universal Forest Products, Inc.
- * Veris Technologies
- * Waddle's Manufacturing, Inc. (Innovators West)
- * Waters, Inc.
- * Wilson Farms
- * Wimer Hay
- * Winfield United
- * Winwater Works Co.

Salina Regional Airport and Airport Industrial Center Economic Impact Summary Report

The Report

- Prepared by Preston Gilson, Ph. D., Senior Policy Fellow, Docking Institute of Public Affairs, Fort Hays State University.
- More than 100 businesses and organizations surveyed.
- Data collected from survey responses, private data sources, and public data sources.
- Calendar year 2019 is the most recent year for all available economic data.
- The economic impact model used was IMPLAN. IMPLAN software and its data base calculates appropriate industry level multipliers at the county level.
- Total economic activity is reported as gross regional product (GRP). The 2019 Saline County GRP was 3,057,429,480.

About the Salina Regional Airport and Airport Industrial Center

- Site of the former Schilling AFB.
- Since 1965 the Salina Airport and Airport Industrial Center has been used to support private businesses, educational institutions, military units, governmental entities, and nonprofits.
- Home for more than 100 businesses and organizations.



Total Economic Impact on Saline County

Total Economic Impact Private businesses, public education institutions, military units, governmental units, and nonprofits.	\$1,297,934,889
Percent of Saline County GRP	42%
Total Employment Direct, indirect, and induced	7,005 jobs
Percent of Saline County Employment	17.6%
Average Annual Wage/Salary	\$58,450
Average Hourly Wage	\$28.10



A significant part of the local economy.

Total Economic Impact on Saline County

Total Economic Impact

Private businesses, public education institutions, military units, governmental units, and nonprofits.

\$1,297,934,889

Percent of Saline County GRP

42%

Total Employment

Direct, indirect, and induced

7,005 jobs

Percent of Saline County Employment

17.6%

Average Annual Wage/Salary

\$58,450

Average Hourly Wage

\$28.10



*Multiple business
expansions underway.*

SLN Airport Industrial Center Growth and Development

- 1Vision Aviation, Salina *
- Durham School Services *
- Flotation Technologies *
- Geoprobe Systems
- Kansas Erosion Products *
- Pure Imagination Labs
- RMA Engineering *
- Schwan's Food Company *
- Stryten Salina *
- Superior Group
- Universal Forest Products *

*** SAA Tenants**

2024 - 2026 Construction - \$1.03B

Salina Airport Construction Projects Underway

\$34.5 Million

- New aviation fuel farm construction
- Hangar H626 rehabilitation
- Runway 12/30 rehabilitation
- New general aviation aircraft storage hangars
- M.J. Kennedy Air Terminal expansion

Airport Construction Projects

\$72 Million

- New MRO and paint hangar construction
- Runway 12/30 Rehabilitation

Airport Industrial Center Construction Projects Underway

\$850 Million

- Schwans' Food Company (Tony's Pizza) – facility expansion
- Universal Forest Products – facility expansion
- Salina Area Technical College – Industrial Maintenance and Automation Building
- Kansas National Guard AASF equipment yard expansion

25 - Year Salina Airport Development Planning

- 300 Acres. SLN West planning project will open another 300 acres of Salina Airport land for new aviation business growth.

K-State Salina Construction Projects

\$75 Million

- New Aerospace Innovation and Training Hub for Composite Materials
- K-State Salina – K-AIRES Center for Advance Immersive Simulation



Schwan's Food Company Growth

- 350,000 SF Expansion
- Multistate freezer, warehouse, and distribution center

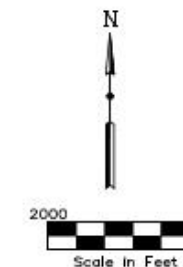


[Hot link to Google Earth](#)



Access to Interstates I-135 and I-70

- New warehouse and distribution center facilities construction
- Sites for construction of over **1M** square feet of new warehouse space



Drawing Number 2549-01-19



3237 ARNOLD, SALINA, KS 67401
(785-827-3914 FAX: 785-827-2221)

None : REVISIONS
KRB : DESIGNED BY
KRB : DRAWN BY
T - 2000' : SCALE
1/11/19, 06:25 : DATE

The Salina Regional Airport By the Numbers

Airfield Data

Elevation: 1288
ARFF Index B Provided
Daily 0600—2200 local
Index E equipment available upon request.

Salina Regional
SLN Airport

Frequencies

SLN ATCT: 7am - 11pm
Tower: 119.3/ 124.35/ 257.7
Ground: 121.9/ 397.9
ATIS/ASOS: 120.15
CTAF: 119.3
ACARS: 136.975 / 131.550

785.827.3914

3237 Arnold Avenue
Salina, Kansas 67401

SalinaAirport.com RUNWAY 17 / 35



Dimensions	12,300 x 150 ft
Surface	Asphalt, Excellent Condition
Weight Bearing Capacity	Single Wheel: 75,000 lbs. Two Single Wheels: 75,000 lbs. Dual Wheel: 200,000 lbs. Two Dual Wheels: 360,000 lbs. Dual Double Tandem: 600,000 lbs.
Pavement Condition Number	75/R/C/W/U
Runway Edge Lights	High Intensity
Rwy 17: MALS, PAPI, VOR, GPS	Rwy 35: MALS, ILS, NDB, GPS

RUNWAY 12 / 30

Dimensions	6,510 x 100 ft
Surface	Asphalt, Excellent Condition
Weight Bearing Capacity	Single Wheel: 55,000 lbs. Dual Wheel: 68,000 lbs. Two Dual Wheels: 125,000 lbs.
Pavement Condition Number	26/R/C/W/U
Runway Edge Lights	Medium Intensity
PAPI, GPS	

RUNWAY 18/36

Dimensions	4,300 x 75 ft
Surface	Asphalt, Excellent Condition
Weight Bearing Capacity	Single Wheel: 30,000 lbs.

1 Vision Aviation



Aviation

2044 Scanlan Avenue, Salina, KS 67401

Part 145 FAA repair station, qualified and trained to perform maintenance on many fleet types including transport category aircraft, certified to work on Transport Canada aircraft, ADS-B installation, routine maintenance, airframe modifications, GPS Installation, glass panels, aviation mechanics, avionics, and more.

frontdesk@1vision.aero

www.1vision.aero

United Airlines operated by SkyWest

Daily flights to/from Salina Regional Airport, Denver International Airport, and Chicago O'Hare International Airport



Operated by SkyWest Airlines

3237 Arnold Avenue, Salina, KS 67401
1.800.UNITED1 (1.800.864.8331)

Kansas State University, Aerospace & Technology

University-based Professional Pilot and Aircraft Maintenance Training Programs
2310 Centennial Road,
Salina, KS 67401
785.826.2640

KANSAS STATE
UNIVERSITY

FBO, Fuel Provider, and Aircraft Ground Support - 100LL, Jet A, Mogas

AVFLIGHT
"America's Fuel Stop"

Aviation Fuel, oxygen, aircraft parking (ramp or tiedown), hangar space, GPU/power cart, passenger terminal and lounge, catering and pilot supplies. Government fuel contractor.

2035 Beechcraft Road, Salina, KS 67401 785.825.6739 Unicom: 122.95

Schilling Aviation Service

SAS
SCHILLING AVIATION SERVICES

- Airframe & Powerplant Maintenance & Repair
- 100-Hour Annual Inspections
- Two IAs on staff
- Parts Capabilities
- Single- & Multi-Engine Aircraft

2010 Rogers Ct, Salina, KS 67401 785.404.6025

MIDWESTATC

Midwest ATC provides quality air traffic control services to SLN through the FAA's Contract Tower Program, 365 days a year. 2000 Kneubuhl Ct, Salina KS 67401 785.825.4806

MIDWESTATC

Salina Aircraft Services, Inc.

Aircraft leasing-rental, management, and hangar. If you have any need in aviation, we most likely have the knowledge or resources to assist you.
3148 Arnold Ave.
Salina KS 67401
785-822-6017

SAS
SALINA AIRCRAFT SERVICES

Salina Air Traffic Control Tower

- FAA Contract Tower
- 7:00 a.m. - 11:00 p.m. (local)
- Radar Equipped



Scheduled Air Service

Salina has connections



Salina Regional Airport

M J Kennedy Air Terminal

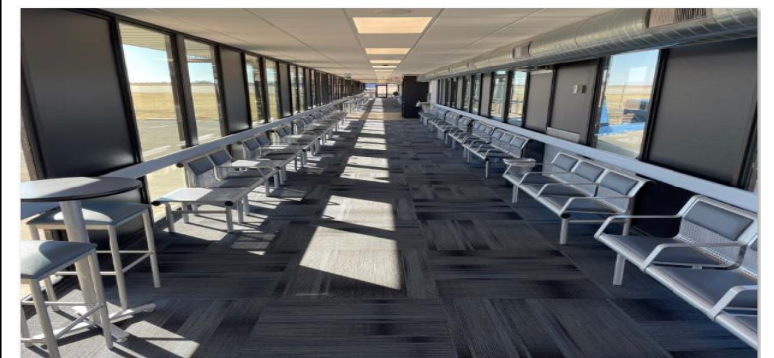


UNITED  .com

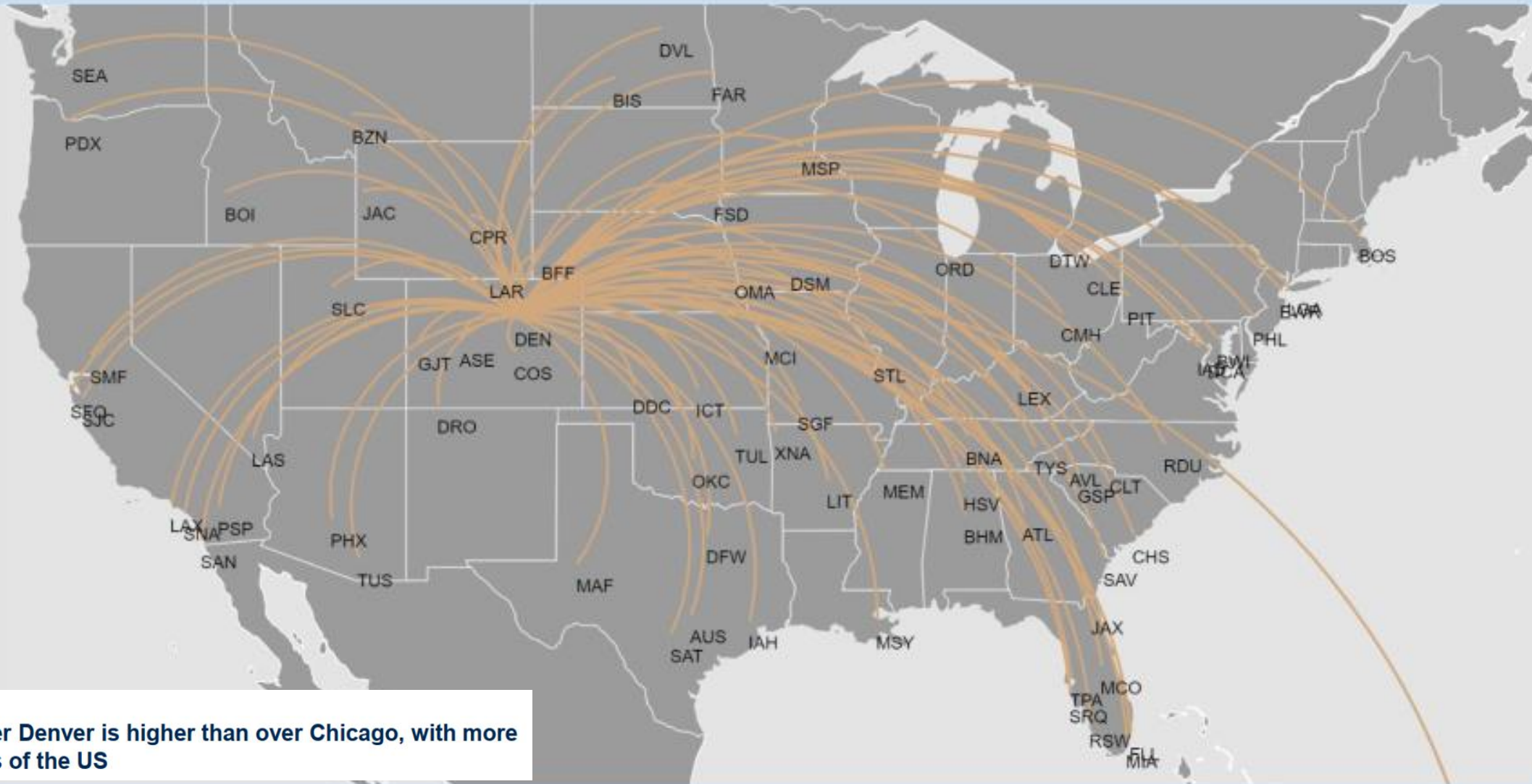
SkyWest Airlines

Operated by SkyWest Airlines

**Daily flights to United Airlines'
Denver and Chicago Hubs**



78 unique domestic city pairs connect both ways over Denver (DEN)



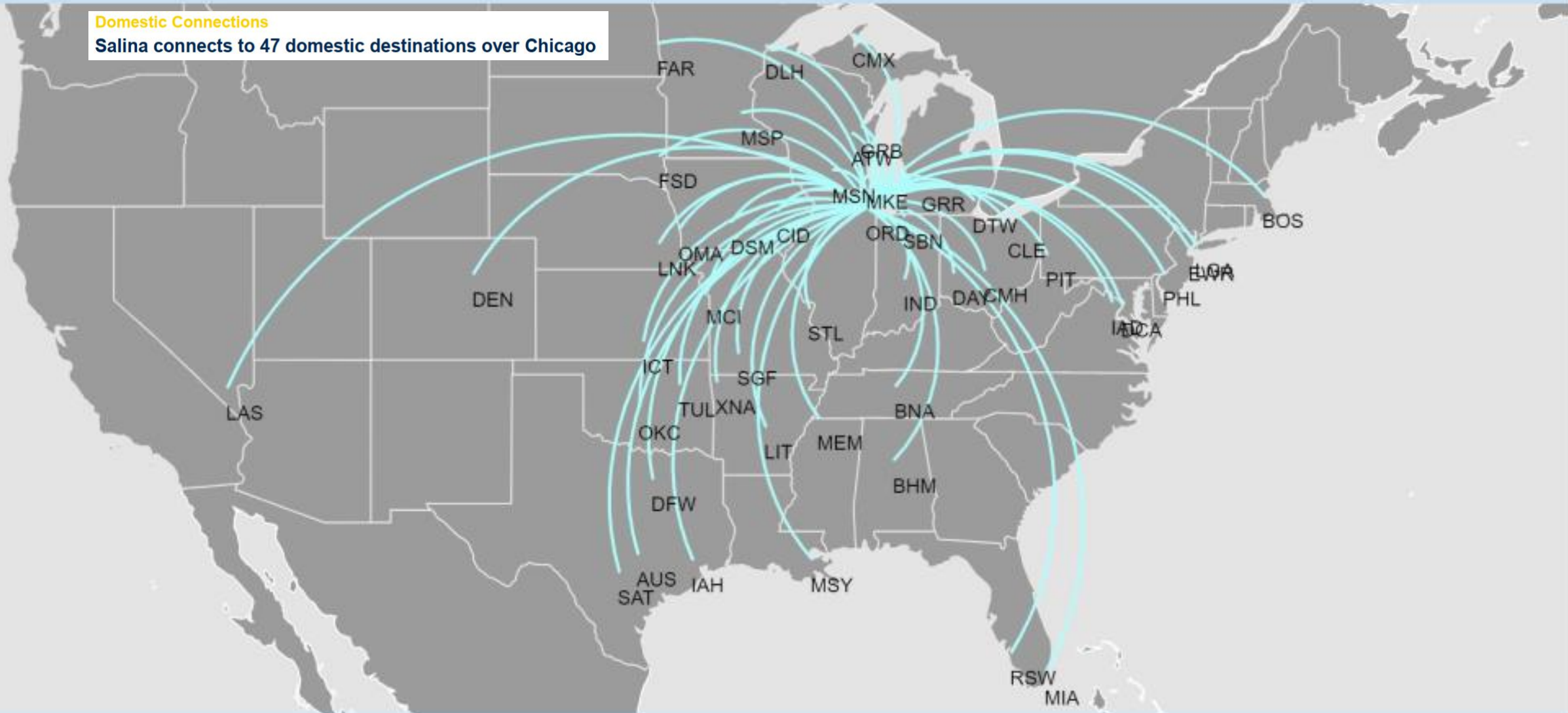
Domestic Connections

Domestic connectivity over Denver is higher than over Chicago, with more connections to more parts of the US

47 unique domestic city pairs connect both ways over Chicago (ORD)

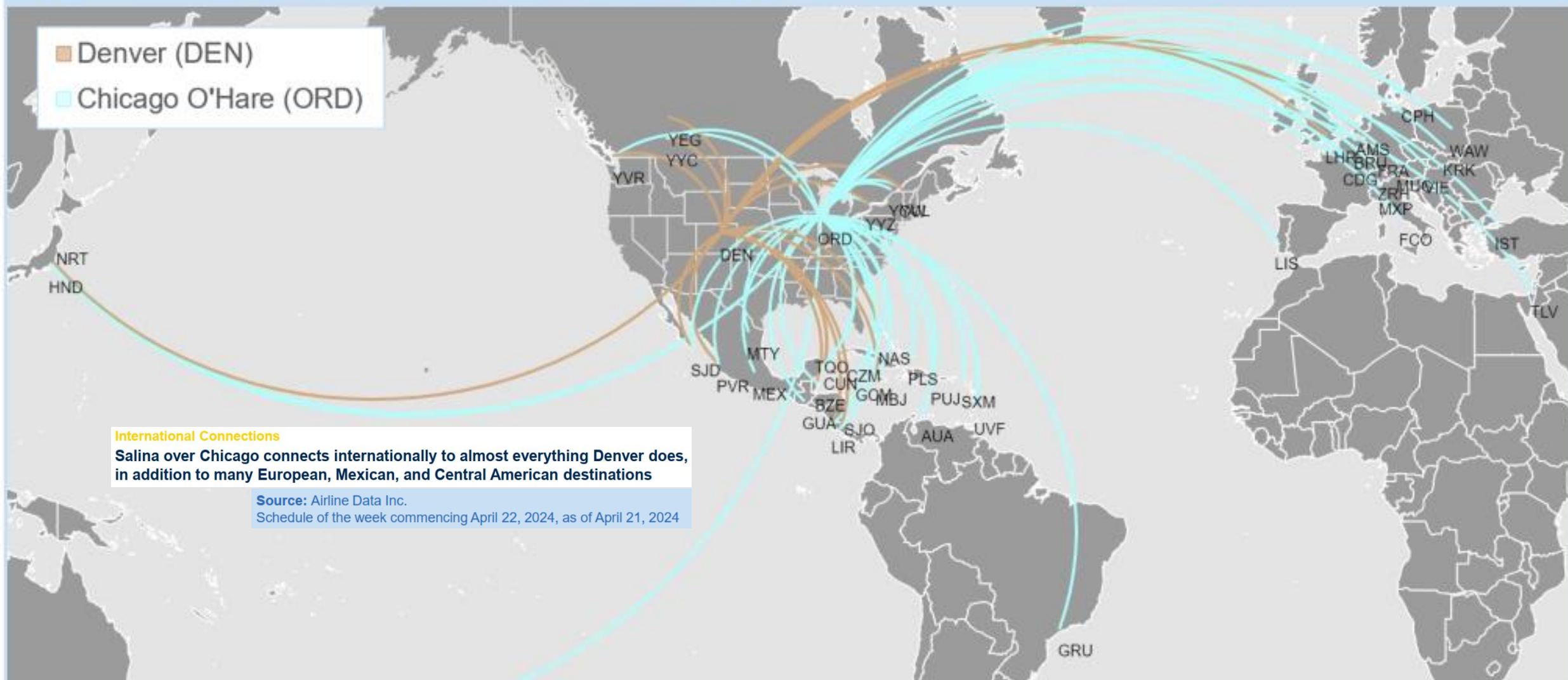
Domestic Connections

Salina connects to 47 domestic destinations over Chicago



Map of unique international city pairs

Connecting both ways over **Denver (DEN)** and **Chicago O'Hare (ORD)**, flying with either United Airlines or one of its Star Alliance partners



SALINA TO DENVER NON-STOP

<u>FREQUENCY</u>	<u>DEPARTS</u>	<u>ARRIVES</u>
Daily	6:29 AM	7:05 AM

DENVER TO SALINA NON-STOP

<u>FREQUENCY</u>	<u>DEPARTS</u>	<u>ARRIVES</u>
Daily	9:05 PM	11:29 AM

SALINA TO CHICAGO NON-STOP

<u>FREQUENCY</u>	<u>DEPARTS</u>	<u>ARRIVES</u>
Daily	4:34 PM	6:26 PM

CHICAGO TO SALINA ONE-STOP

<u>FREQUENCY</u>	<u>DEPARTS</u>	<u>ARRIVES</u>
Daily	12:16 PM	3:48 PM

ALL TIMES ARE SUBJECT TO CHANGE
BOOK TODAY AT: www.united.com,
800-864-8331, scan the QR code,
or call your local travel agent.



Flight #	Departure	From	To	Arrival
DEN 5022	6:30 a.m.	SLN (Salina)	DEN (Denver)	7:05 a.m.
Flight #	Departure	From	To	Arrival
ORD 5054	11:45 a.m.	ORD (Chicago)	HYS (Hays)	1:53 p.m.
	2:25 p.m.	HYS (Hays)	SLN (Salina)	3:09 p.m.
	3:45 p.m.	SLN (Salina)	ORD (Chicago)	5:40 p.m.
Flight #	Departure	From	To	Arrival
DEN 5035	9:05 p.m.	DEN (Denver)	SLN (Salina)	11:33 p.m.



Salina Regional Airport
3237 Arnold Avenue
Salina, Kansas 67401
FlySalina.com



Operated by SkyWest Airlines

Chicago, Denver and beyond.
BOOK TODAY AT: www.united.com

800-864-8331

Or call your local travel agent

Airport Business Growth

SALINA Airport Authority
SLN Fly Airport

SLN Aviation Business Growth and Development

- 1Vision Aviation Salina
- Avflight Salina
- Garmin
- Kansas National Guard Army Aviation
- K-State Salina Aerospace and Technology Campus
- Salina Aircraft Services
- Schilling Aviation Services
- SkyWest Airlines
- Ag Operators
- Military Operations



K-State Salina



Professional Pilot Training

400 Student Pilots

K-State Salina Aerospace Technology Campus is a leader in Professional Airline Pilot Training.



The Applied Aviation Research Center (AARC) is engaged in facilitating the commercialization of UAS. This vision led the AARC to be at the forefront of UAS research that influences and enhances UAS regulations and increases capabilities, founded on manned aviation's culture of safety. The AARC staff is comprised of subject-matter experts, connecting with industry to provide training, consulting, collaboration and research. Centrally located in Kansas, we enjoy a permissive environment for access to the National Airspace System (NAS). We conduct operations as a public entity as well as under Section 333 exemption certificates of authorization and the FAA's newest guidelines for commercial operations, 14CFR Part 107.



Nationally recognized UAS experts

The UAS program on the Aerospace and Technology Campus is a national leader in the uncrewed aircraft field and provides many opportunities to engage with students and industry. Offering services in industry training, special project and program consultation services, research partnerships, alongside our nationally ranked bachelor's degrees, K-State is your answer for UAS education and partnership opportunities.

A vertical collage of ten different quadcopter drones. From top to bottom: 1. A black and white DJI Phantom 3 with a camera. 2. A white DJI Phantom 3 with a camera. 3. A black and white DJI Phantom 3 with a camera. 4. A white DJI Phantom 3 with a camera. 5. A white DJI Phantom 3 with a camera. 6. A white DJI Phantom 3 with a camera. 7. A white DJI Phantom 3 with a camera. 8. A white DJI Phantom 3 with a camera. 9. A white DJI Phantom 3 with a camera. 10. A white DJI Phantom 3 with a camera.

Aerospace Innovation and Simulation

Kansas Advanced Immersive Research for Emergent Systems (K-AIRES) Center Partners:

- ✓ Salina Airport Authority
- ✓ K-State Salina
- ✓ Department of Defense
- ✓ Pure Imagination Labs
- ✓ Intel
- ✓ NVIDIA
- ✓ General Atomics ASI

58,451 SF

\$40 M

or View

SLN Flight Test Center

Flight test work by

- Bombardier
- Textron
- Honda Jet
- NIAR WERX
- Dynamic Aviation
- Bell Textron





Airborne Science Missions

NASA, NOAA and NCAR use SLN for climate and atmospheric research missions.





United Airlines Diversion Airport



ACARS at SLN 136.975 / 131.550



Salina Refueling &
Ground Support Services

Special Events



Andrews AFB Special Air Missions

Senator Bob Dole Arrival

December 13, 2021

SLN MRO BUSINESSES

1 Vision Aviation Salina

- AerCap Leasing
- Aircraft paint
- DoD contracts
- Heavy Checks
- Return to Service
- Avionics
- Modifications





Schilling Aviation Services

- Airframe and Power Plant Maintenance
- Mechanic services for
 - ✓ Single engine piston
 - ✓ Multi-engine
 - ✓ Turbine engine
 - ✓ Business jet aircraft
- Aircraft rental
- Flight instruction



A REMODEL OF

SAA Hangar 626

2625 Arnold Court Salina, Kansas



Architect
Architect One, Inc.
2625 Arnold Court
Salina, Kansas 67401
Phone: 781-234-5678
Fax: 781-234-5679
Email: info@architectone.com

Architect
Hutton
2625 Arnold Court
Salina, Kansas 67401
Phone: 781-234-5678
Fax: 781-234-5679
Email: info@hutton.com

AO
Architect
One

SAA Hangar 626
2625 Arnold Court
Salina, Kansas

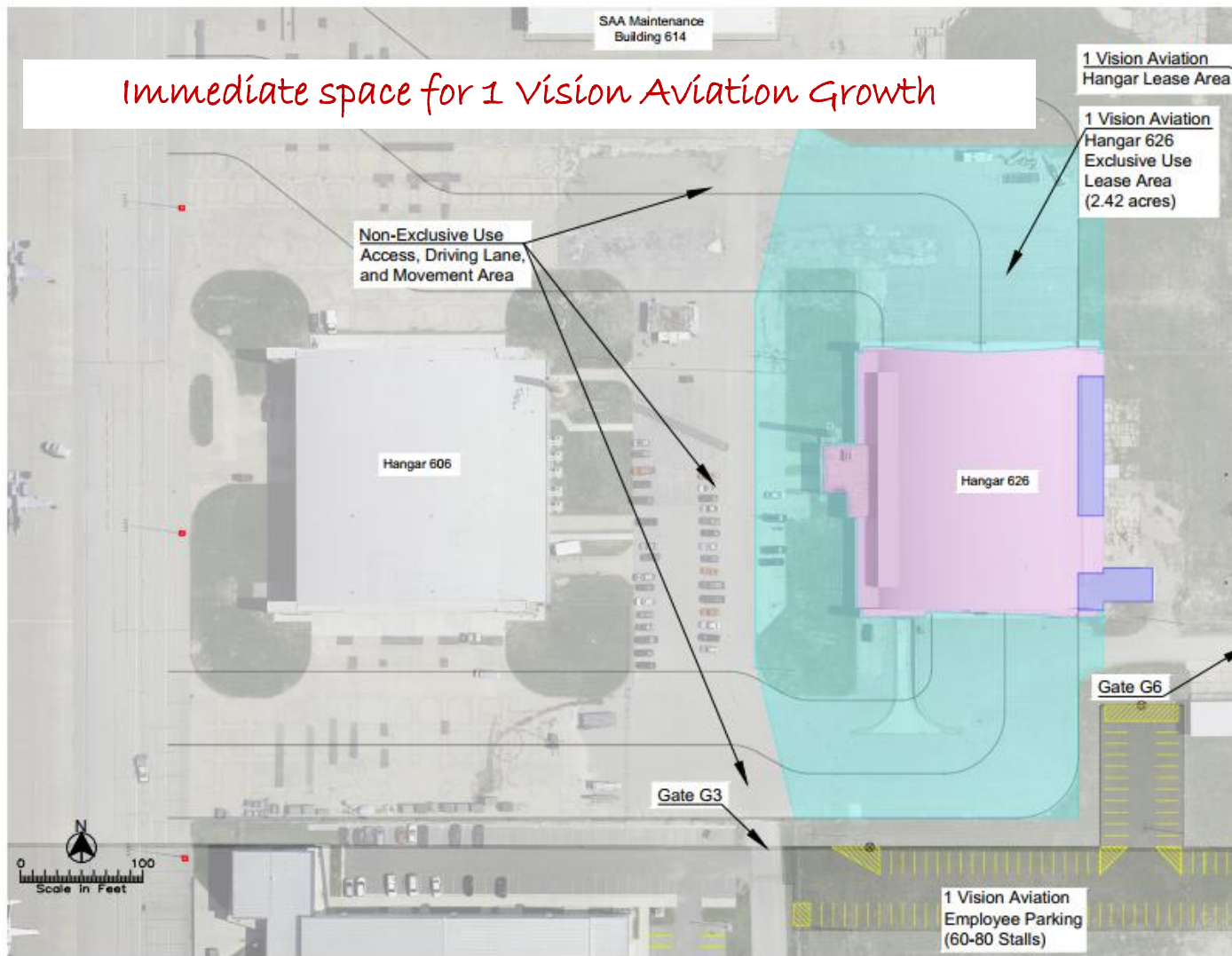
0001



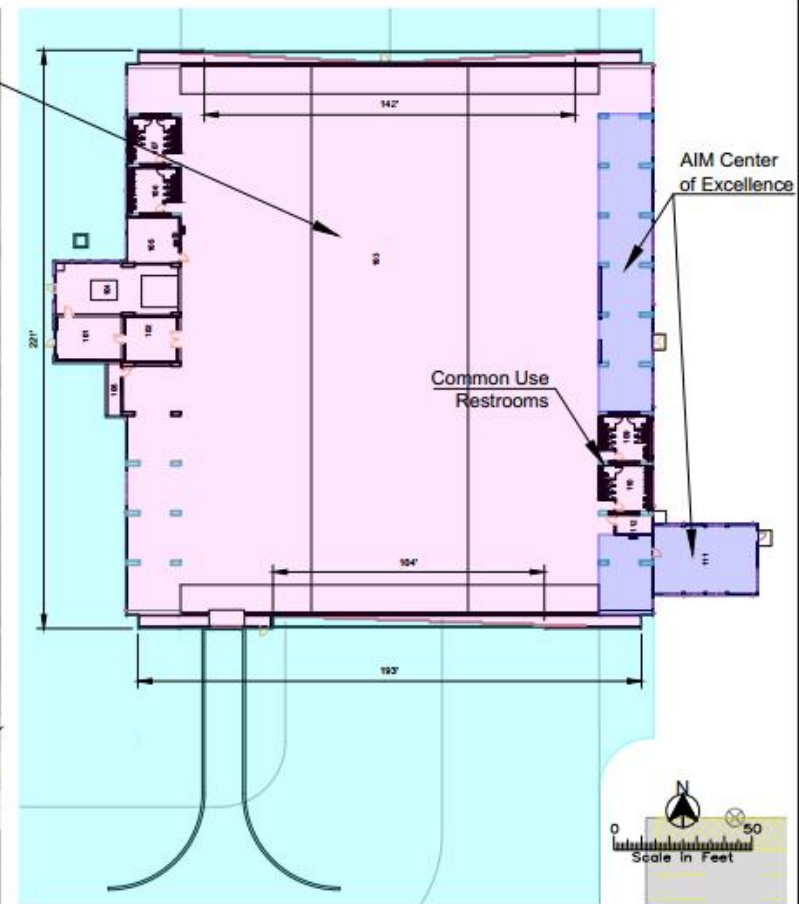
Existing MRO Hangars
Opening Summer 2024



Immediate space for 1 Vision Aviation Growth



Elevation
(Interior Looking North)



Hangar 626
2625 Arnold Court
1 Vision Hangar Lease Area = 42,140 S.F.
West Offices Lease Area = 800 S.F.
Total Lease Area = 42,940 S.F.

Maximum Facility Tall Height - 38.79 ft.

Power
600A 480V 3 Phase
Gas
2" Service
Water
2" Service
Wet Sprinkler and Clean Agent Fire Suppression Systems

Drawing Number 3218-04-24



3237 ARNOLD, SALINA, KS 67401
(785-827-3914 FAX: 785-827-2221)

None : REVISIONS

MWC : DESIGNED BY

MWC : DRAWN BY

As Shown : SCALE

04/08/24, 900 : DATE

SALINA AIRPORT AUTHORITY
1 Vision Aviation Hangar 626 Lease Exhibit A

1
OF
1



New MRO
Hangar
Construction

SLN North Ramp
Development

Planned for the
construction of
650,000 SF of new
MRO Hangar Space

*Maintenance,
repair, and
overhaul*



SALINA REGIONAL AIRPORT MRO & PAINT HANGAR CONSTRUCTION

Timothy Rogers A.A.E.
Executive Director
Salina Airport Authority

March 2024



Double down on our competitive advantages to capture MRO opportunities

-Kansas Framework for growth

Overview

- 1 Vision Aviation Projections
- Project Size
- Cost Estimate for Design & Construction
- Schedule
- \$49M Project Financing
- Workforce Recruitment and Training
- Outcome and Estimated Economic Impact

1 vision Aviation Projections



2023

Serviced 194 Aircraft

Including customers such as
American, Delta, Jet Blue, Textron,
United & AerCap Leasing



2024

229 Total Projected Aircraft

Additional customers such as
Amazon Air & NIAR



2025

Continued Growth

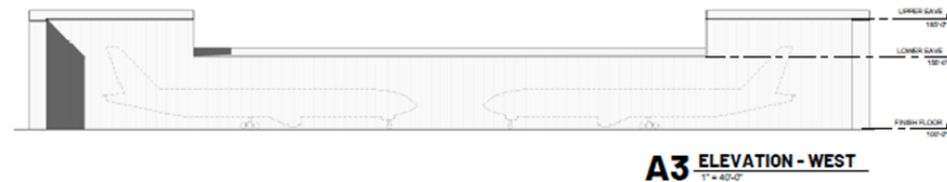
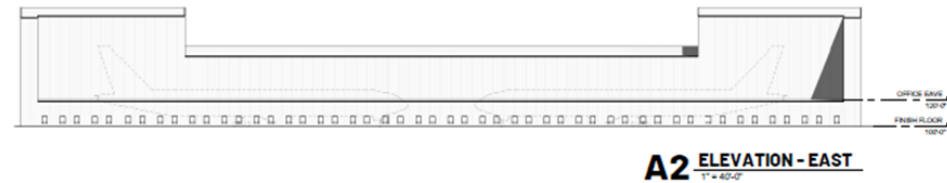
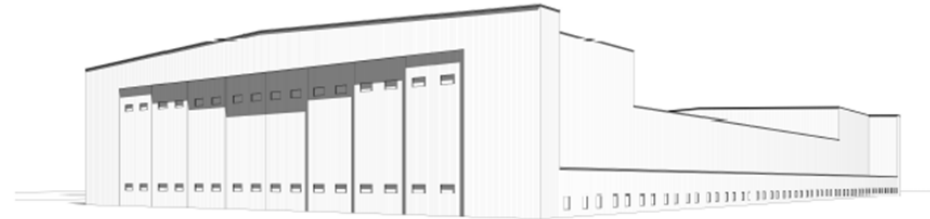
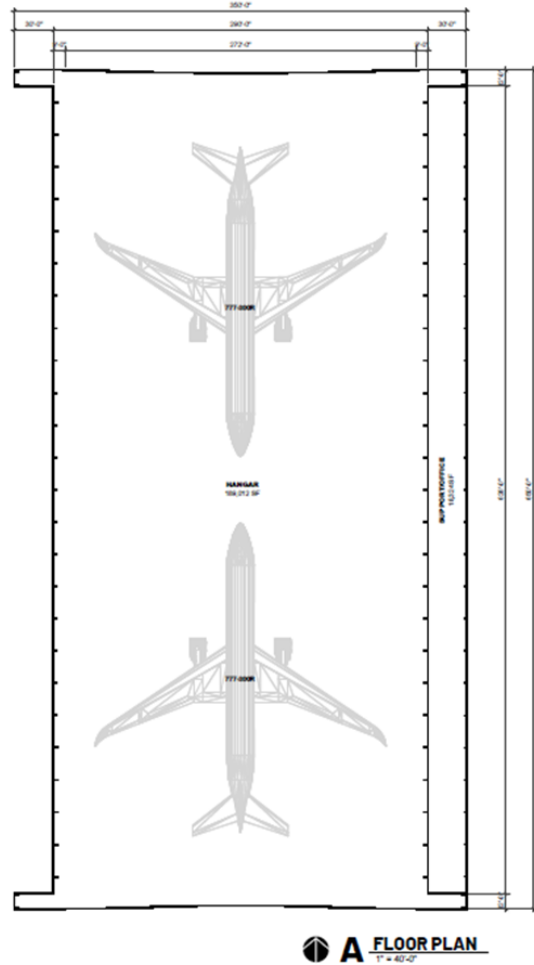
Servicing over 15 different Series of
Aircraft for Airlines, Cargo & Defense

Project size

Two 89K SF MRO & Paint Hangars



Cost Estimate for Design & Construction



\$4M Design
\$45M Construction
\$49M Total



Outcome

- A MRO and paint hangar complex that supports MRO growth at 1 Vision Aviation SLN, NIAR WERX, and Forbes
- An estimated 489 New Jobs and \$36M Annual Payroll. A \$2.2M increase in annual State tax revenues. (Docking Institute)



**Aviation Innovation
and Maintenance**

CENTER OF EXCELLENCE AT SLN

Aviation Workforce Recruitment and Training





Workforce Ready: AIM Center Grads

Set to recruit & train the workforce for MRO development at SLN!

- Apprenticeship training
- Shared facilities for aviation workforce training
- Curriculum: Sheet Metal, Electricity & Electronics, Composites, Paint



SLN Military Aviation

The average annual economic impact of military training events exceeds
\$2.4M

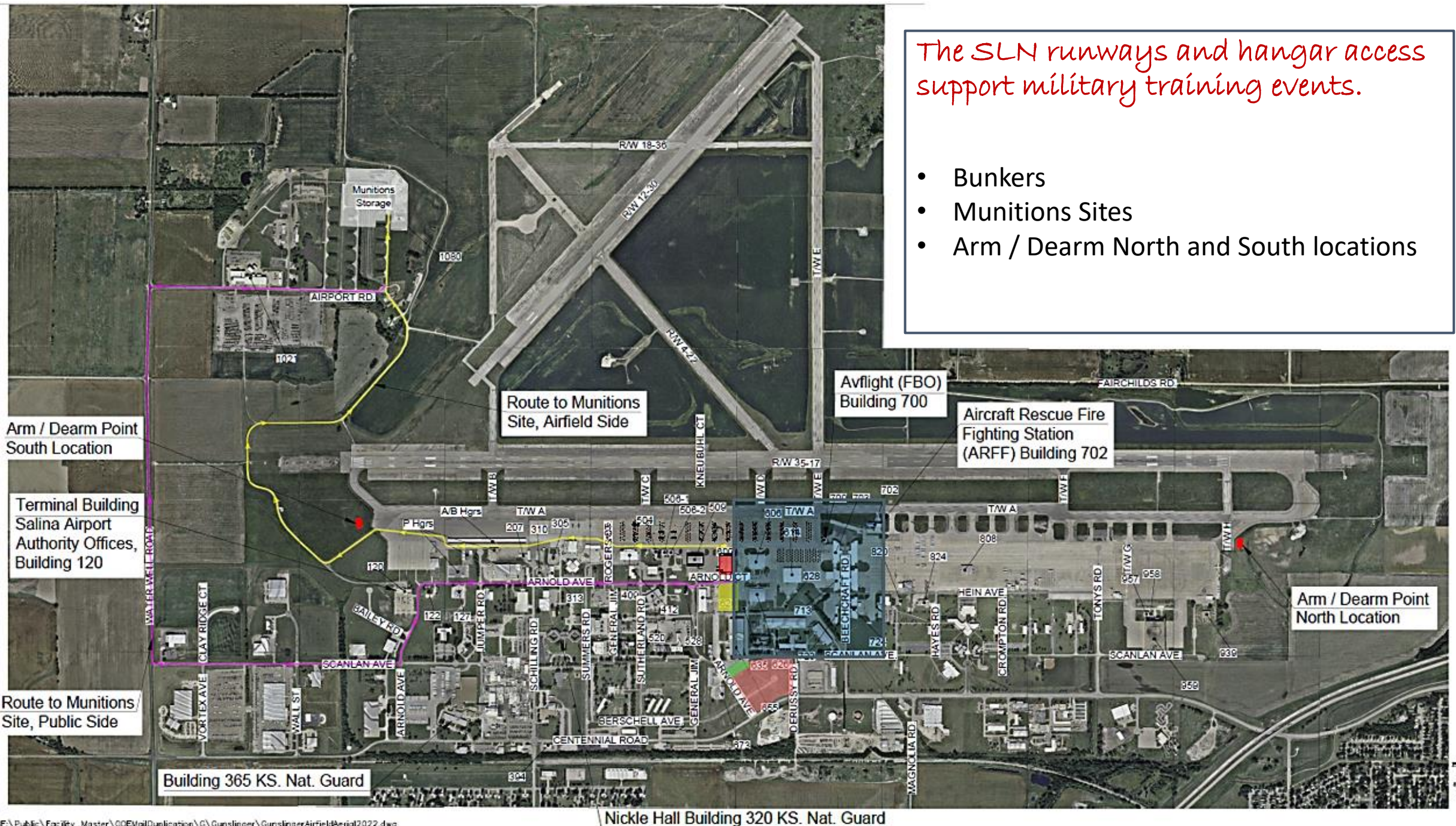
Military Operations

- Ft. Riley APOE Flights
- New AASF#2 facility construction
- Smoky Hill Weapons Range

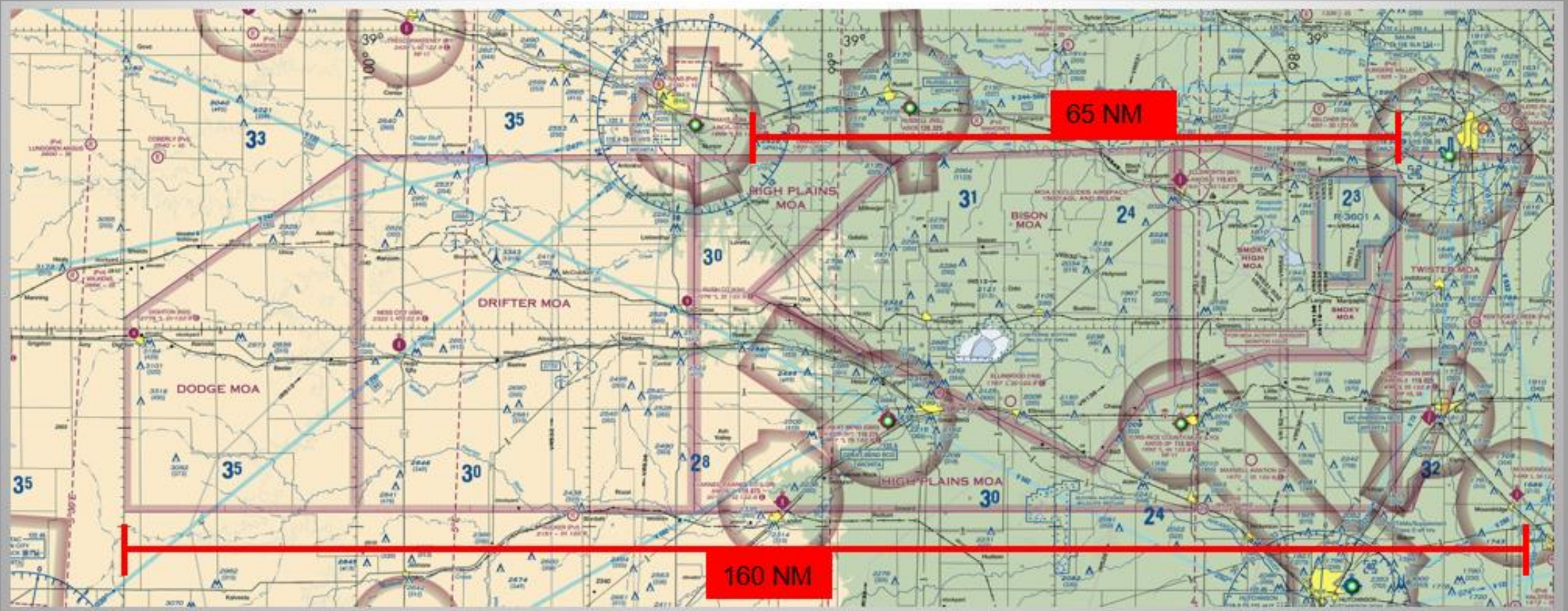


The SLN runways and hangar access support military training events.

- Bunkers
- Munitions Sites
- Arm / Dearm North and South locations



Military Airspace Available for Training Events



Typical Airspace is Bison/Smoky/R3601 Only: SFC-FL230



SLN Airfield Development

AIP Priorities

- Fuel farm design and construction
- Runway 12/30 rehabilitation design and construction
- SLN terminal building expansion

Project AAERO

SLN Airspace - UAS & AAM OP

Transportation Planning: Regional Research and Development

Project Name

Advanced Aviation & Engineering Research Operations (AAERO): Enhancing UAS & AAM Safety & Integration at SLN

Project Recipient

Salina Airport Authority
Timothy F. Rogers
Executive Director

Project Purpose

AAERO seeks to pioneer the future of Uncrewed Aircraft Systems (UAS) and Advanced Air Mobility (AAM) operations at Salina Regional Airport (SLN) and its surrounding airspace. This forward-looking study is aimed at identifying the most effective approaches for Air Traffic Control (ATC) surveillance and the implementation of sense and avoid technologies. By focusing on SLN's Class D airspace and beyond, the project will produce actionable recommendations for the integration of procedures and equipment essential for routine UAS & AAM operations. Serving as a model for similar initiatives, AAERO is poised to propel the UAS & AAM industry forward, bolster Kansas's aerospace sector, and support burgeoning UAS & AAM endeavors at SLN, including those of GA-ASI.

Project Detail

AAERO is a comprehensive study designed to augment existing efforts to meet the ATC surveillance and sense and avoid requirements for UAS & AAM within and around SLN. The study is anticipated to deliver a set of guidelines on the necessary procedures and technologies, such as systems offered by Raytheon, Saab, SRC, uAvionix or others to facilitate regular UAS & AAM operations. This initiative will not only serve as a benchmark for future projects but also support the growth of the UAS & AAM industry, enhance the capabilities of Kansas aerospace firms, and foster new developments in UAS & AAM at SLN.

Member Request: \$1M

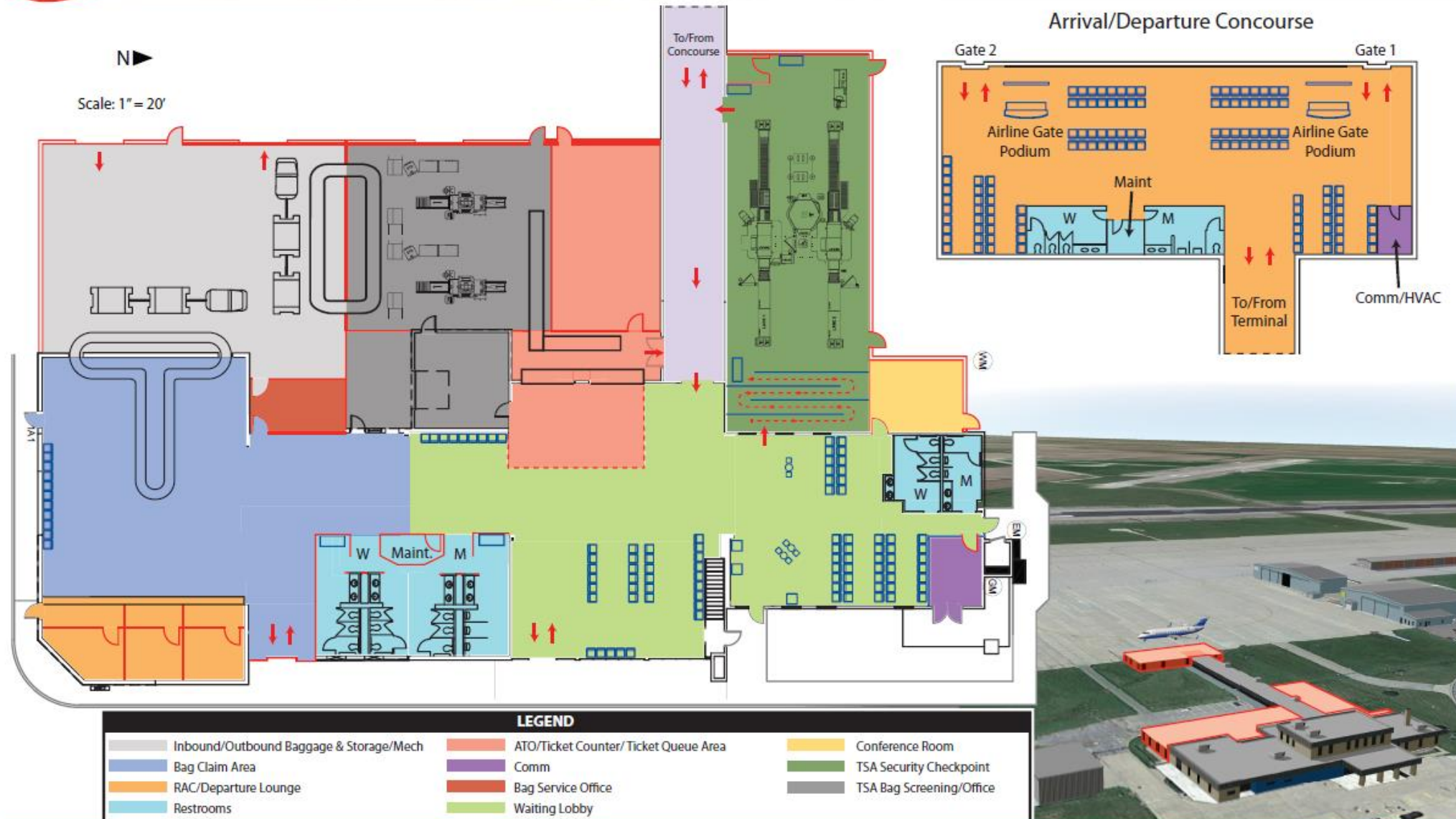
Infrastructure: \$843,111
Surveillance Sensors, Command and Control Radios, Ground Based Radar Station, Communication Network System.

Location of Activity

The study will focus on Salina, Kansas, specifically linking the Smoky Hill Air National Guard Range Military Operations Area (MOA) with the Salina Regional Airport (SLN) Class D Airspace.

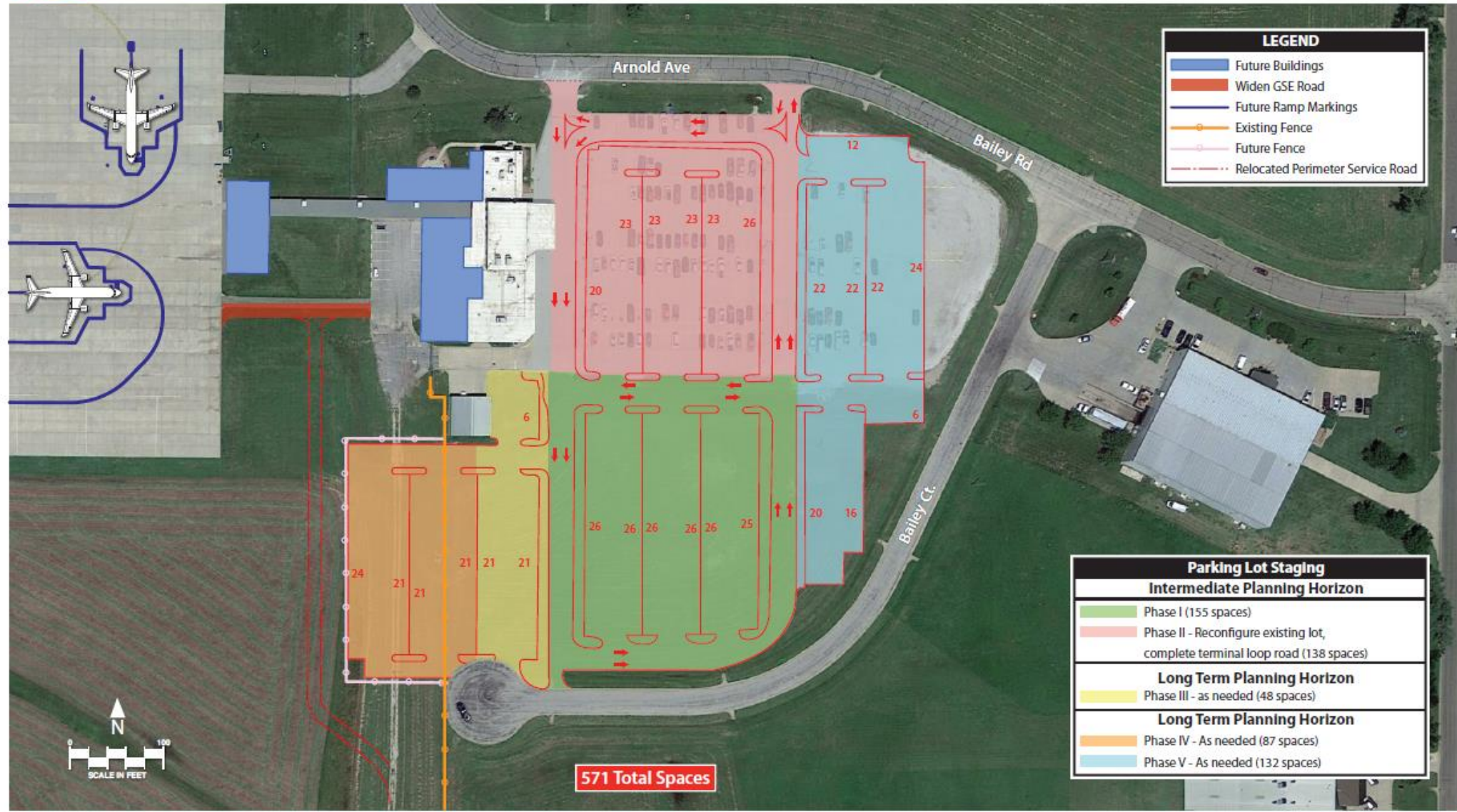
SALINA Airport Authority

DAS



The SLN terminal building expansion will meet the needs and requirements for passenger growth.

Estimated cost: \$12M.



The expansion of terminal building parking will meet forecasted passenger growth.

Ongoing Airfield Improvements

The rehabilitation of Runway 12/30 is an essential project.

The runway is the airport's crosswind runway and handles traffic when Runway 17/35 is closed.

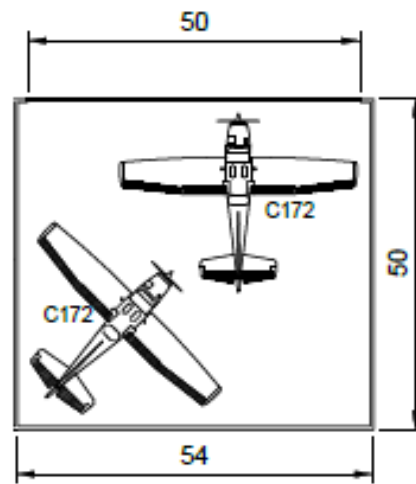
Estimated cost:
\$7.5M





Fuel farm construction will result in 200,000 gallons of new above ground storage tanks, covered loading and unloading truck lanes and storage for SAFjet fuel. Expected cost: \$5M.

General Aviation Growth

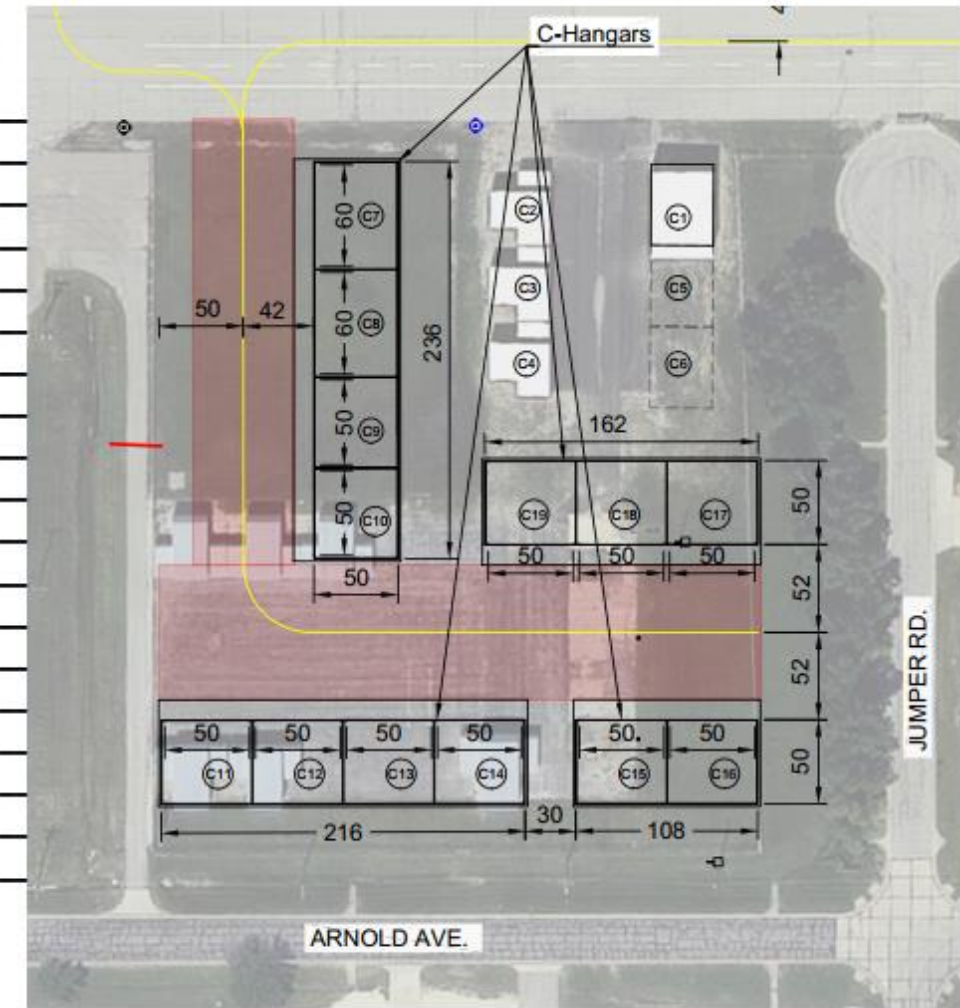


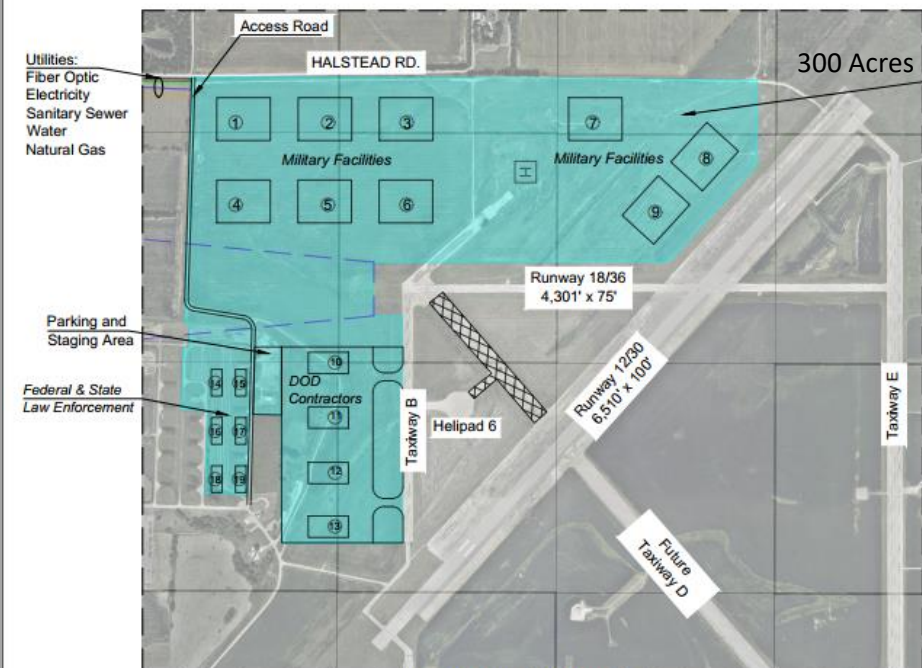
Box Hangar

54' Wide x 50' Deep
50' x 15' High Hydraulic Door
Roof is Sloped to The Rear



C-Hangar	Tenant
C1	Leased
C2	Leased
C3	Leased
C4	Leased
C5	N/A
C6	N/A
C7	Leased
C8	Leased
C9	Leased
C10	Leased
C11	Leased
C12	Leased
C13	Leased
C14	Leased
C15	Leased
C16	Leased
C17	Leased
C18	Leased
C19	Leased





DEVELOPMENT SITES



300 Acres

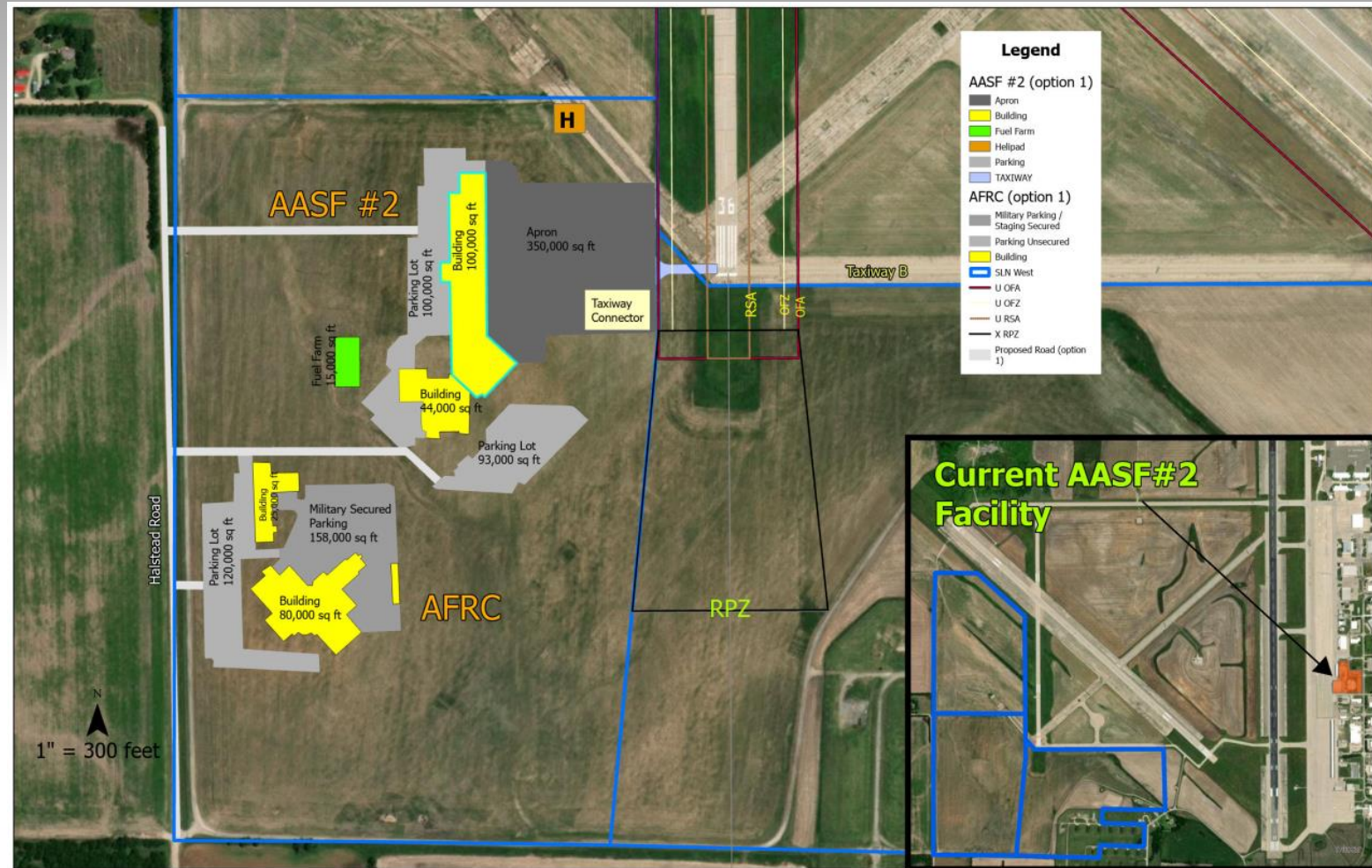
Building Size (Sq. Ft.)

1-9: 200,000 Sq. Ft. = 1,800,000 Sq. Ft.

10-13: 75,000 Sq. Ft. = 300,000 Sq. Ft.

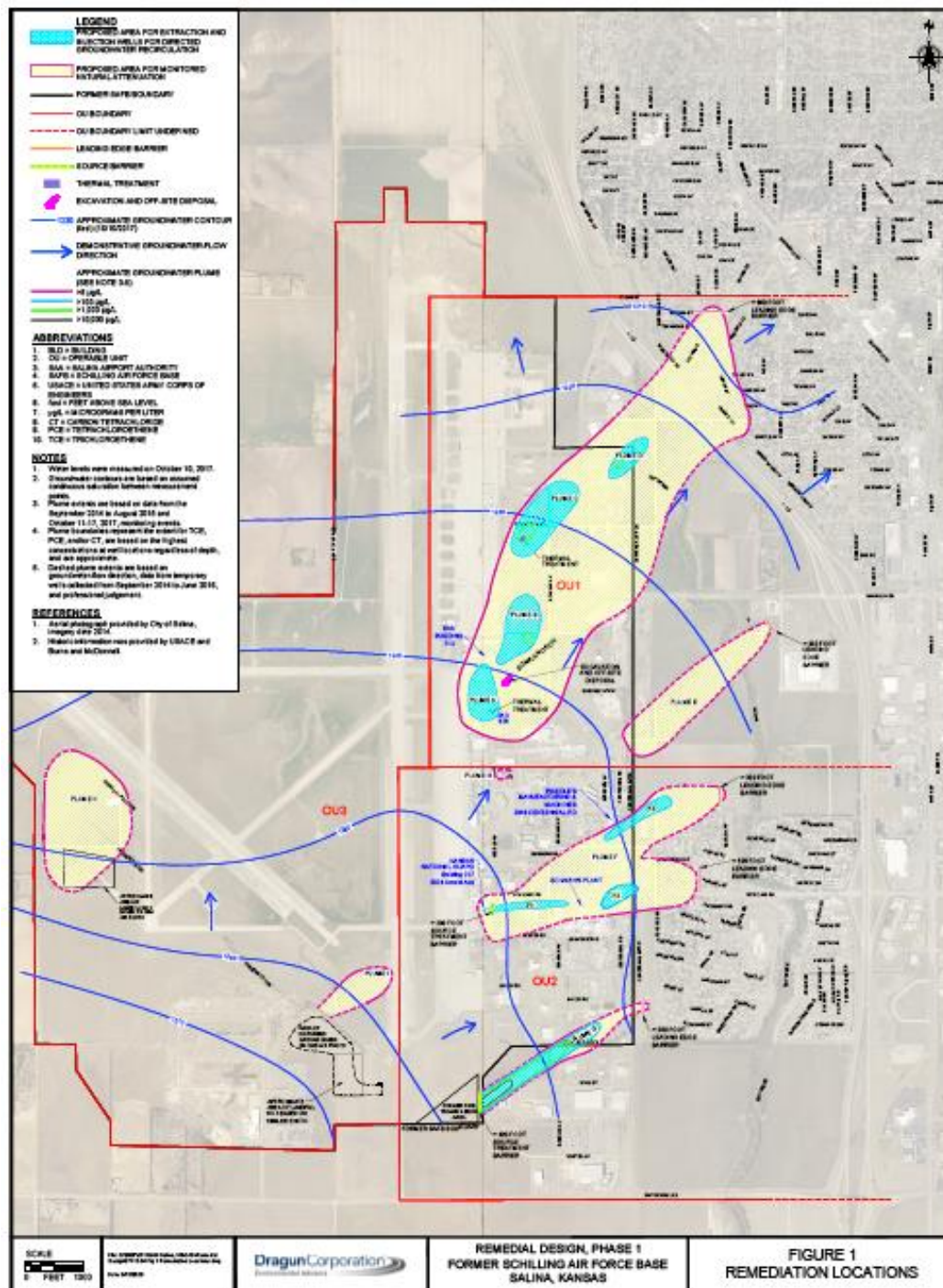
14-19: 25,000 Sq. Ft. = 150,000 Sq. Ft.

Total = 2,250,000 Sq. Ft.



SLN West

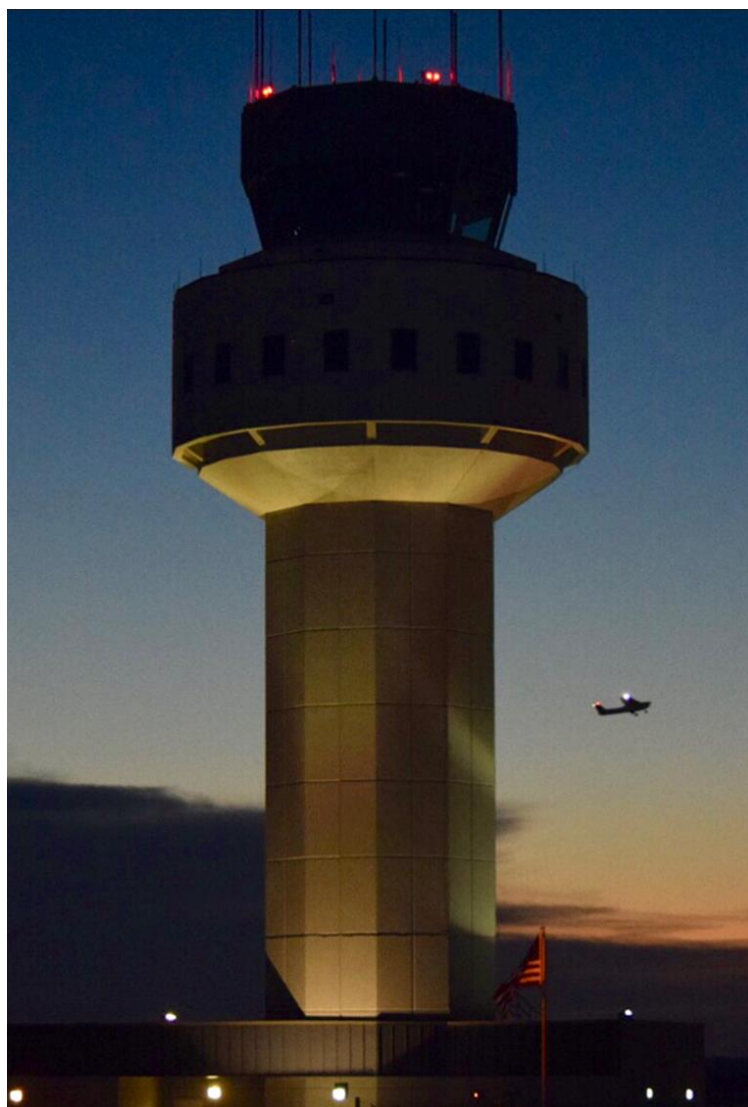
Environmental Stewardship



- Former Schilling AFB Project
- \$70M Clean up underway
- Supports continued Salina Regional Airport and Airport Industrial Area growth

Questions & Discussion





Timothy F. Rogers, A.A.E

Executive Director

trogers@salair.org



SALINA Airport
Authority

Salina, Kansas, USA