

Salina Regional Airport and Airport Industrial Area Overview

By
Timothy Rogers. A.A.E.
Executive Director
Salina Airport Authority



Salina's growing economy.

Salina Area Chamber of Commerce

Saline County GDP grew by \$341 million in 2021; Salina sees first population increase in almost a decade

Feb 21, 2023 — 2 min read

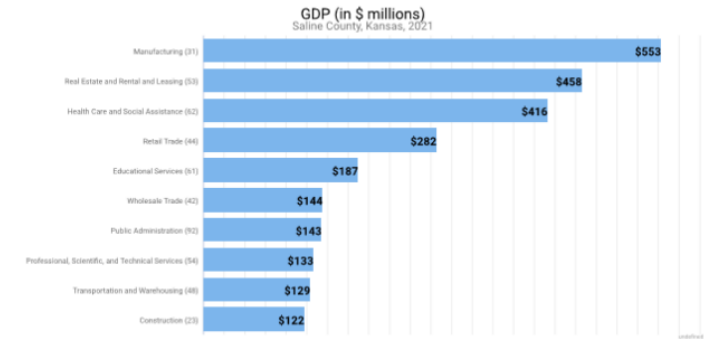
Gross Domestic Product

Gross Domestic Product (GDP) is the total value of goods and services produced by a region. In 2021, nominal GDP Saline County, Kansas expanded 12.4%. This follows a contraction of 1.1% in 2020. As of 2021, total GDP in Saline County, Kansas was \$3,087,082,000.



Gross Domestic Product data are provided by the Bureau of Economic Analysis, imputed by Chmura where necessary, updated through 2021.

Of the sectors in Saline County, Kansas, Manufacturing contributed the largest portion of GDP in 2021, \$553,252,000. The next-largest contributions came from Real Estate and Rental and Leasing (\$457,782,000); Health Care and Social Assistance (\$416,223,000); and Retail Trade (\$281,850,000).



Gross Domestic Product data are provided by the Bureau of Economic Analysis, imputed by Chmura where necessary, updated through 2021.

While other Kansas counties saw growth, comparatively Saline County saw the highest percentage change in growth. Shawnee County (Topeka) GDP went up 10.2 percent, Sedgwick County (Wichita) increased by 9.1 percent, Riley County (Manhattan) by 8.7 percent, and Reno County (Hutchinson) by 8.6 percent. Saline County's economy did contract in 2020 by 1.1 percent during the height of business shutdowns, after seeing incremental gains in 2018 and 2019 of 3.3 percent and 2.1 percent growth, respectively. The drastic growth seems to be indicative of high demands for goods and services, including housing and retail trade. Manufacturing, real estate, health care, and retail trade make up over 55 percent of the GDP for the County.

Housing Growth

Identified housing need – The 2022 City of Salina housing study has projected 1,357 units needed by 2025. The housing study projected that owner-occupied vs. renter-occupied need to be exactly 50/50 (678 each).

Subdivisions currently underway – TOTAL UNITS: ~450

- South View Estates- 42 single family homes, and 66 townhome units, \$190-\$225k range
- Aero Plains- 150 townhome units, \$225-\$250k range
- Cedar Ridge (Phase II)- 14 units, \$250-\$350k range
- Cedar Point- 22 units, \$300k+ range
- Magnolia Hills (Phase II)- 16 units, \$250k+ range
- Stone Lake (Phase III)- 45 units- mix of owner-occupied houses and 2 apartment buildings, \$250k+ for homes*
- Wheatland Valley (Phase 1)- 27 units, \$185k-\$250k range
- Community Housing Development Project- 50-100 units of higher density, workforce housing

Apartment complex development underway – TOTAL UNITS: ~630

- Lee Lofts (Phase II)- 80 units, market rate
- State of Kansas Grant (Developer Agreement underway)- 500 units, market rate
- Del Ray Mobile Home Park- 50 units, all new park with new units, \$625/mo.

A growing list of businesses and organizations.

133 Airport / Industrial Center Businesses & Organizations 78 Salina Airport Authority Tenants

BUSINESSES AND ORGANIZATIONS



- 1 Vision Aviation
- A+ Aviation Services
- Ag Services
- ARINC Inc./Collins Aerospace
- Avflight Salina Corporation
- Blue Beacon International Flight Department
- Bombardier - Learjet, Inc.
- Central States Enterprises
- Centurion Aviation
- Civil Air Patrol
- Crop Service Center
- Enterprise Rent-A-Car
- Federal Aviation Administration
- Ft. Riley, KS
- Garmin International

- Heinen Brothers
- Hertz / LAG Rentals
- Houser Custom Ag, Inc.
- Jet Stream
- Kansas Army National Guard AASF #2
- Kansas State University Salina Aerospace and Technology Campus
- Midwest Air Traffic Control Services
- Plains Environmental
- Planemasters, Ltd
- RMA Engineering
- Salina Aircraft Services
- Schilling Aviation Services
- SkyWest Airlines d/b/a United Airlines
- Transportation Security Administration
- Tyree Ag



- Access Storage, Inc.
- Accurate Electric
- AGCO Corporation
- Airport Apartments
- All Saints Orthodox Christian Church
- Alltell Newco No. 4, LLC
- APAC
- Automation & Controls Integration
- Belcher Industries
- Berry Material Handling
- Bimbo Bakeries
- Boretac LLC
- Brown Farms
- Callabresi Heating & Cooling
- Cash-Wa Direct
- Century Business Systems
- Choices Network, Inc.
- City of Salina
- City Wide Self Storage
- Classics Auto Body
- Cross-Midwest Tire Co.
- Davis Automotive & Towing
- Daws, Inc.
- Dragun Corporation
- Durham School Services
- Enel Green Power
- Exapta Solutions, Inc.
- FedEx Express
- FedEx Freight
- Flotration Technologies
- Forbes Bros. Timberline Const., Inc.
- Gartner Refrigeration
- Geocore, LLC
- Geoprobe Systems
- Girl Scouts
- GT Midwest
- Harbin Construction
- Heineken Electric
- Hutton Construction
- IBT Industrial Solutions
- J & R Enterprises
- Kansas Erosion Products, LLC
- Kansas Highway Patrol
- Kansas National Guard
- KO Storage
- L & R Farms
- L & S Builders
- Laas Farms
- Luminous Neon Art & Design Systems
- Matrix Electronic Measuring, Inc.
- McIntire Welding
- Midwest Concrete
- Milenium, Inc.

- Miller Pipeline, LLC
- Nex-Tech
- Oards Auto Repair
- Occupational Center of Central Kansas (OCCK, Inc.)
- One Office Solutions
- Ovation Cabinetry, Inc.
- Penske Truck Leasing
- Pestinger Distributing Co.
- Power Ad Company
- Precision Machine & Welding
- Quivera Gun Club
- Salina Adult Education (USD 305)
- Salina Area Technical College
- Salina Auto Auction
- Salina Machine
- Salina Mini Storage
- Salina Rescue Mission
- Salina Vortex Corporation
- Salina Waste Systems, Inc.
- Saline County Bird Dog Assoc.
- Saline County Shops
- Schwans Company
- Scientific Engineering
- Sherwin Williams
- Smoky Hill Winery
- Smoky Hill, L.L.C.
- Snak-Atak
- Solution Outreach Center (OCCK, Inc.)
- South Industrial Welding, Fabrication, Installation
- Specialized Metal Fab
- State of Kansas Drivers License Office
- Storage Mart
- Stryten Salina
- Suda, Inc.
- Sunflower Restaurant Supply
- Superior Contracting & Manufacturing Services
- Superior Plumbing & Heating Co.
- Superior Pump & Electric Motor Service
- Syring Golf
- T & R Dirt Construction
- Tool Time
- Triangle Trucking
- Turbocharger Solutions International
- Unifirst
- United Rentals, LLC
- Universal Forest Products, Inc.
- Veris Technologies
- Waddle's Manufacturing, Inc. (Innovators West)
- Waters, Inc.
- Wilson Farms
- Wimer Hay
- Winfield United
- Winwater Works Co.

* Airport Authority Tenants

Since 1965

136 Airport / Industrial Center Businesses & Organizations
80 Salina Airport Authority Tenants

Salina Regional Airport and Airport Industrial Center Economic Impact Summary Report

The Report

- Prepared by Preston Gilson, Ph. D., Senior Policy Fellow, Docking Institute of Public Affairs, Fort Hays State University.
- More than 100 businesses and organizations surveyed.
- Data collected from survey responses, private data sources, and public data sources.
- Calendar year 2019 is the most recent year for all available economic data.
- The economic impact model used was IMPLAN. IMPLAN software and its data base calculates appropriate industry level multipliers at the county level.
- Total economic activity is reported as gross regional product (GRP). The 2019 Saline County GRP was 3,057,429,480.

About the Salina Regional Airport and Airport Industrial Center

- Site of the former Schilling AFB.
- Since 1965 the Salina Airport and Airport Industrial Center has been used to support private businesses, educational institutions, military units, governmental entities, and nonprofits.
- Home for more than 100 businesses and organizations.



Total Economic Impact on Saline County

Total Economic Impact Private businesses, public education institutions, military units, governmental units, and nonprofits.	\$1,297,934,889
Percent of Saline County GRP	42%
Total Employment Direct, indirect, and induced	7,005 jobs
Percent of Saline County Employment	17.6%
Average Annual Wage/Salary	\$58,450
Average Hourly Wage	\$28.10



A significant part of the local economy.

Total Economic Impact on Saline County

Total Economic Impact

Private businesses, public education institutions, military units, governmental units, and nonprofits.

\$1,297,934,889

Percent of Saline County GRP

42%

Total Employment

Direct, indirect, and induced

7,005 jobs

Percent of Saline County Employment

17.6%

Average Annual Wage/Salary

\$58,450

Average Hourly Wage

\$28.10



*Multiple business
expansions underway.*

SLN Airport Industrial Center Growth and Development

- Schwan's Food Company *
- Geoprobe Systems
- Superior Group
- Universal Forest Products *
- Durham School Services *
- Flotation Technologies *
- Kansas Erosion Products *
- Stryten Salina *

* SAA Tenants



Schwan's Food Company Growth

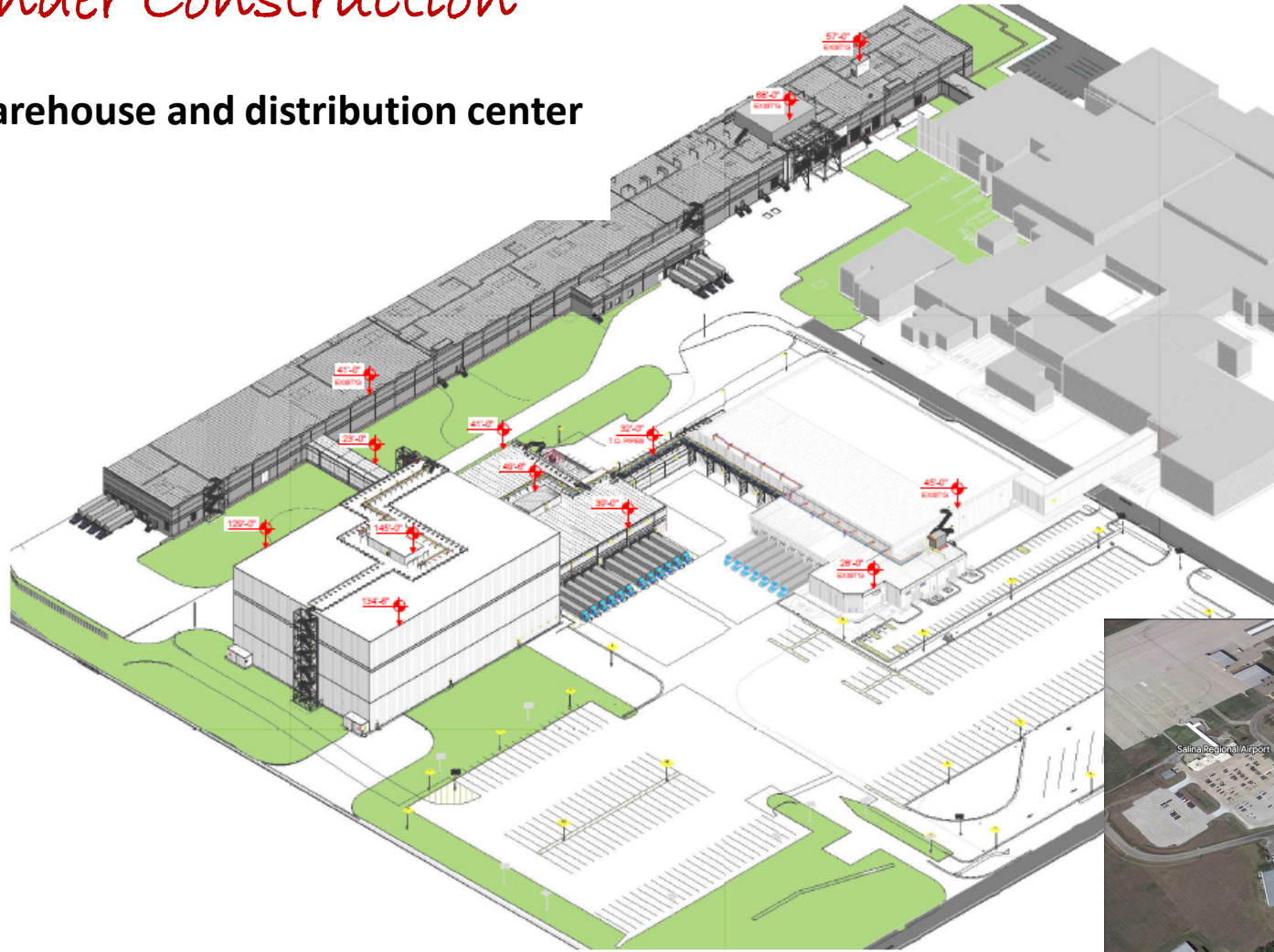
- 200,000 SF Expansion
- \$600M - \$800M expansion
- World's largest frozen pizza production facility
- Multistate warehouse and distribution center



[Hot link to Google Earth](#)

Now Under Construction

Multistate warehouse and distribution center



ARCHITECTURAL 3D VIEW -
SOLIDWORKS
AP-01-01-3D2

no.	date	by	std	description

FOR REFERENCE
ONLY

ISSUED FOR PERMIT -
NOT FOR
CONSTRUCTION

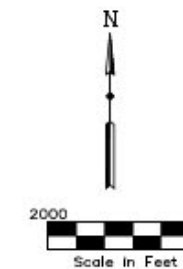


SOLIDWORKS OVERALL ARCHITECTURAL 3D VIEW	
Project	144500
Drawing	AP-01-01-3D2
Sheet	1 of 10
Date	144500-AP-01-01-3D2



Access to Interstates I-135 and I-70

- New warehouse and distribution center facilities construction
- Sites for construction of over **1M** square feet of new warehouse space



Drawing Number 2549-01-19



3237 ARNOLD, SALINA, KS 67401
(785-827-3914 FAX: 785-827-2221)

None : REVISIONS

KRB : DESIGNED BY

KRB : DRAWN BY

T - 2000' : SCALE

1/11/19, 06:25 : DATE

The Salina Regional Airport By the Numbers

Airfield Data

Elevation: 1288
ARFF Index B Provided
Daily 0600—2200 local
Index E equipment available upon request.

Salina Regional
SLN Airport

Frequencies

SLN ATCT: 7am - 11pm
Tower: 119.3/ 124.35/ 257.7
Ground: 121.9/ 397.9
ATIS/ASOS: 120.15
CTAF: 119.3
ACARS: 136.975 / 131.550

785.827.3914

3237 Arnold Avenue
Salina, Kansas 67401

SalinaAirport.com RUNWAY 17 / 35



Dimensions	12,300 x 150 ft
Surface	Asphalt, Excellent Condition
Weight Bearing Capacity	Single Wheel: 75,000 lbs. Two Single Wheels: 75,000 lbs. Dual Wheel: 200,000 lbs. Two Dual Wheels: 360,000 lbs. Dual Double Tandem: 600,000 lbs.
Pavement Condition Number	75/R/C/W/U
Runway Edge Lights	High Intensity
Rwy 17: MALS, PAPI, VOR, GPS	Rwy 35: MALS, ILS, NDB, GPS

RUNWAY 12 / 30

Dimensions	6,510 x 100 ft
Surface	Asphalt, Excellent Condition
Weight Bearing Capacity	Single Wheel: 55,000 lbs. Dual Wheel: 68,000 lbs. Two Dual Wheels: 125,000 lbs.
Pavement Condition Number	26/R/C/W/U
Runway Edge Lights	Medium Intensity
PAPI, GPS	

RUNWAY 18/36

Dimensions	4,300 x 75 ft
Surface	Asphalt, Excellent Condition
Weight Bearing Capacity	Single Wheel: 30,000 lbs.

1 Vision Aviation



Aviation
2044 Scanlan Avenue, Salina, KS 67401

Part 145 FAA repair station, qualified and trained to perform maintenance on many fleet types including transport category aircraft, certified to work on Transport Canada aircraft, ADS-B installation, routine maintenance, airframe modifications, GPS Installation, glass panels, aviation mechanics, avionics, and more.

frontdesk@1vision.aero

www.1vision.aero

United Airlines operated by SkyWest

Daily flights to/from Salina Regional Airport, Denver International Airport, and Chicago O'Hare International Airport



3237 Arnold Avenue, Salina, KS 67401
1.800.UNITED1 (1.800.864.8331)

Kansas State University, Aerospace & Technology

University-based Professional Pilot and Aircraft Maintenance Training Programs
2310 Centennial Road,
Salina, KS 67401
785.826.2640

KANSAS STATE
UNIVERSITY

FBO, Fuel Provider, and Aircraft Ground Support - 100LL, Jet A, Mogas

AVFLIGHT
"America's Fuel Stop"

Aviation fuel, oxygen, aircraft parking (ramp or tiedown), hangar space, GPU/power cart, passenger terminal and lounge, catering and pilot supplies. Government fuel contractor.

2035 Beechcraft Road, Salina, KS 67401 785.825.6739 Unicom: 122.95

Schilling Aviation Service



- Airframe & Powerplant Maintenance & Repair
- 100-Hour Annual Inspections
- Two IAs on staff
- Parts Capabilities
- Single- & Multi-Engine Aircraft

2010 Rogers Ct, Salina, KS 67401 785.404.6025

MIDWESTATC

Midwest ATC provides quality air traffic control services to SLN through the FAA's Contract Tower Program, 365 days a year. 2000 Kneubuhl Ct, Salina KS 67401 785.825.4806



Salina Aircraft Services, Inc.

Aircraft leasing-rental, management, and hangar. If you have any need in aviation, we most likely have the knowledge or resources to assist you.
3148 Arnold Ave.
Salina KS 67401
785-822-6017



Scheduled Air Service

Salina has connections



Salina Regional Airport

M J Kennedy Air Terminal

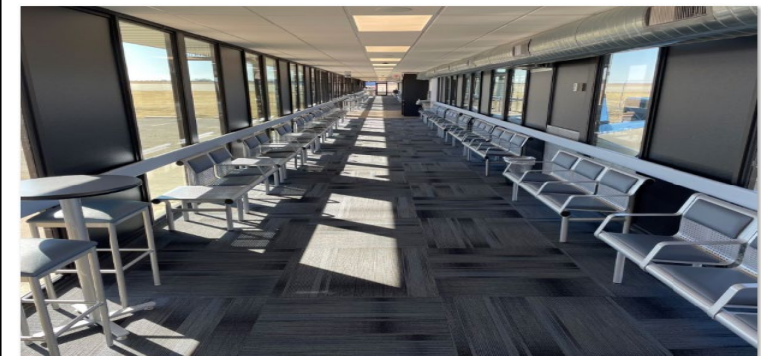


UNITED  .com

SkyWest Airlines

Operated by SkyWest Airlines

**Daily flights to United Airlines'
Denver and Chicago Hubs**



Airport Business Growth

SALINA Airport Authority
SLN Fly Airport

SLN Aviation Business Growth and Development

- Garmin
- Schilling Aviation Services
- Salina Aircraft Services
- Avflight Salina
- 1 Vision Aviation Salina
- SkyWest Airlines
- K-State Salina
- Ag Operators
- Military Operations

SAS
SCHILLING AVIATION SERVICES

1 Vision
Aviation

AVFLIGHT
UNITED

Operated by SkyWest Airlines



K-State Salina



Salina Air Traffic Control Tower

- FAA Contract Tower
- 7:00 a.m. – 11:00 p.m. (local)
- Radar Equipped



SLN Flight Test Center

Flight test work by

- Bombardier
- Textron
- Honda Jet
- NIAR WERX
- Dynamic Aviation





Airborne Science Missions

NASA, NOAA and NCAR use SLN for climate and atmospheric research missions.





United Airlines Diversion Airport



ACARS at SLN 136.975 / 131.550



Salina Refueling &
Ground Support Services

Special Events



Andrews AFB Special Air Missions

Senator Bob Dole Arrival

December 13, 2021

SLN MRO BUSINESSES

1 Vision Aviation Salina

- AerCap Leasing
- Aircraft paint
- DoD contracts
- Heavy Checks
- Return to Service
- Avionics
- Modifications





Schilling Aviation Services

- Airframe and Power Plant Maintenance
- Mechanic services for
 - ✓ Single engine piston
 - ✓ Multi-engine
 - ✓ Turbine engine
 - ✓ Business jet aircraft
- Aircraft rental
- Flight instruction

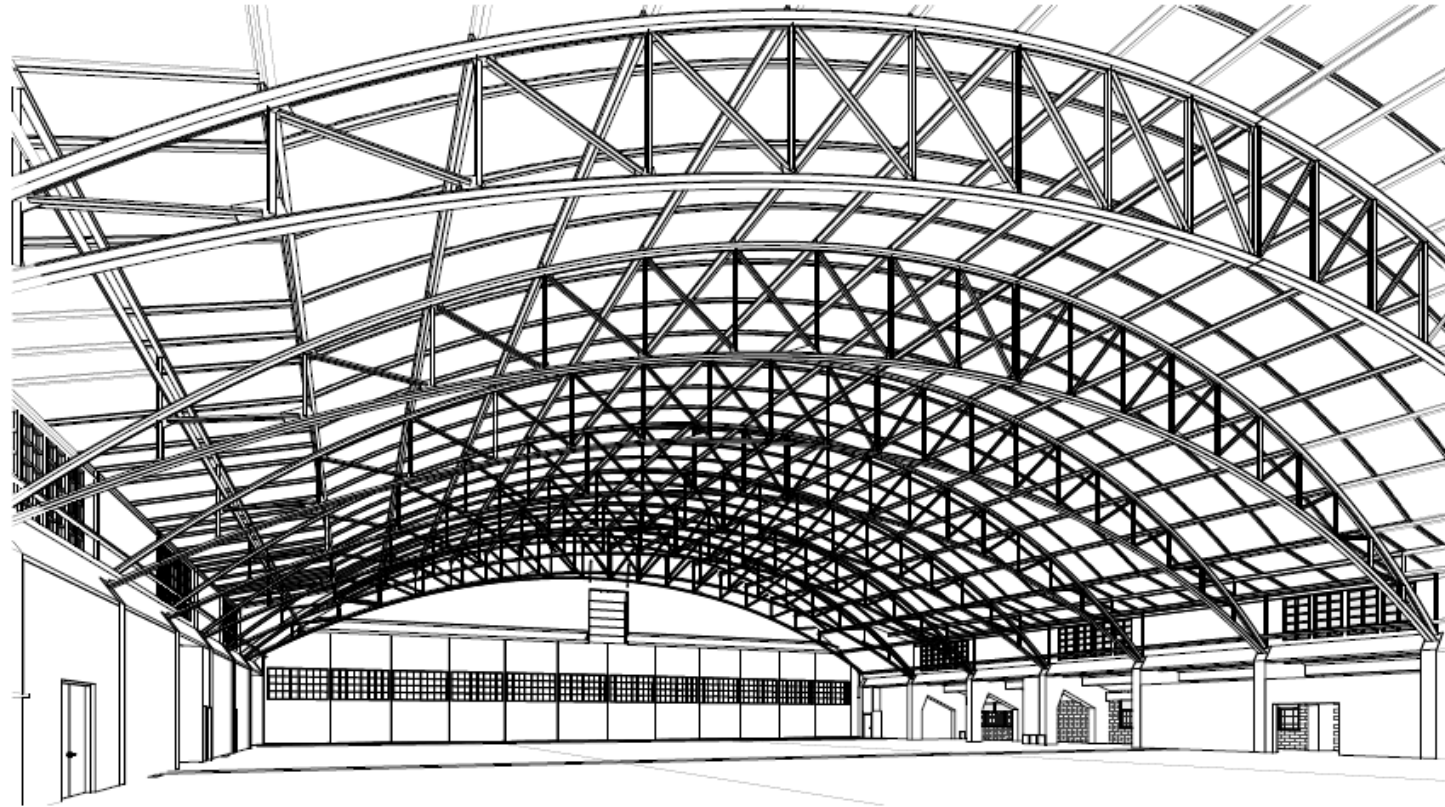


Existing
MRO
Hangars

1/16/2023 HADST TM

1644 260 225 SAA Hangar 626 Salina, Kansas 65052-2255 Salina, Kansas 65052-2255

A REMODEL OF
SAA Hangar 626
2625 Arnold Court Salina, Kansas



Rehabilitation
Scheduled for December 2023 Completion

Architect
Architect One, Inc.
905 S Kansas Ave #200
Salina, KS 65052 Phone: 785.271.7010 Fax: 785.271.7020

Architect
Hutton
1011 S. 1st St.
Salina, KS 65052 Phone: 785.271.7010 Fax: 785.271.7020

AO
Architect
One

1644 260 225 SAA Hangar 626 Salina, Kansas 65052-2255 Salina, Kansas 65052-2255

PROPOSED REVISIONS
NOT FOR CONSTRUCTION

A REMODEL OF
SAA Hangar 626
2625 Arnold Court Salina, Kansas

PROJECT NUMBER	22-126
PROJECT ARCHITECT	AO
PROJECT MANAGER	JDT
DRAWN BY	Author
CHECKED BY	Checker
DATE	01/16/23
DATE REVISION	00

REVISIONS

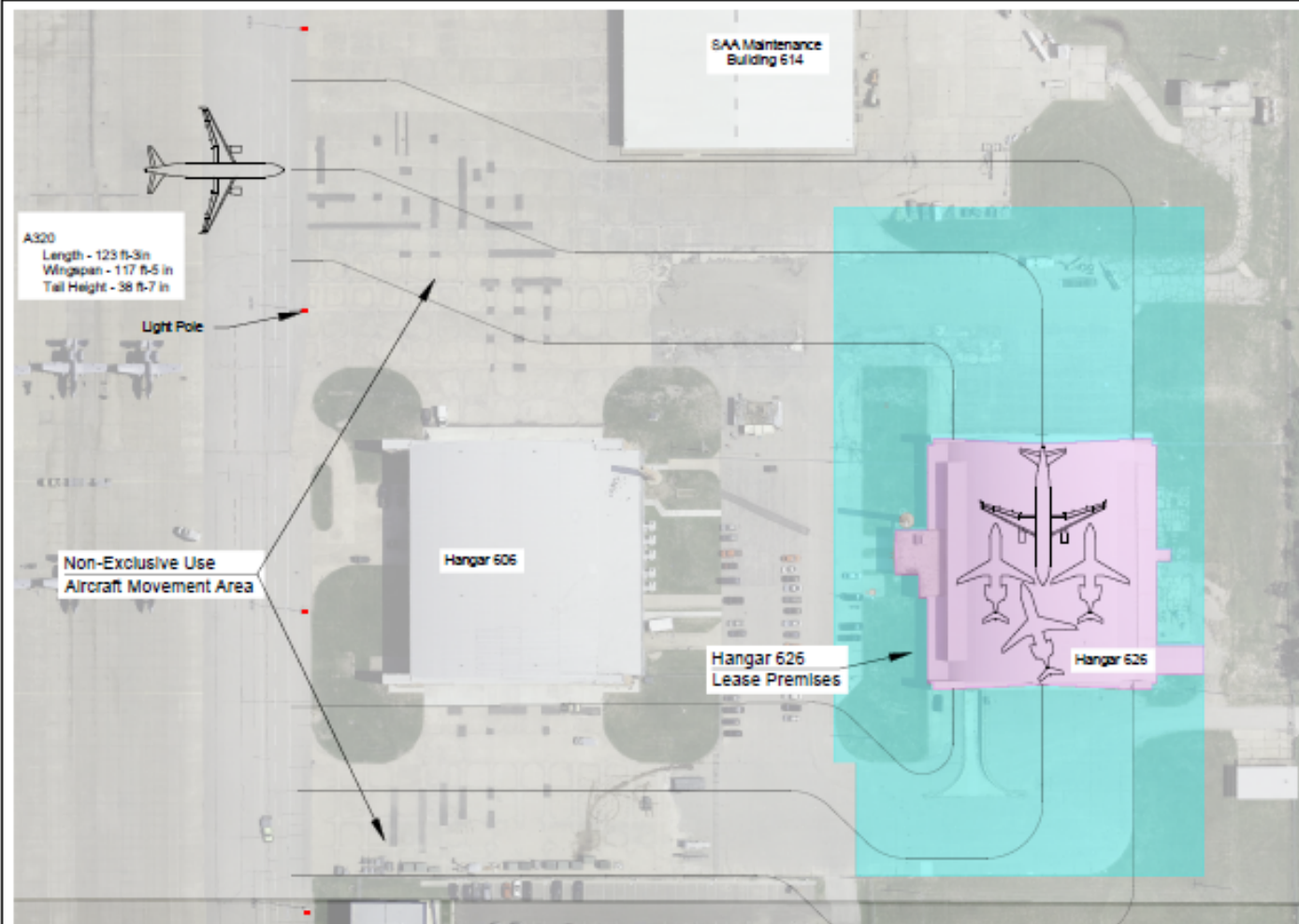
SHEET TITLE

Client Sheet

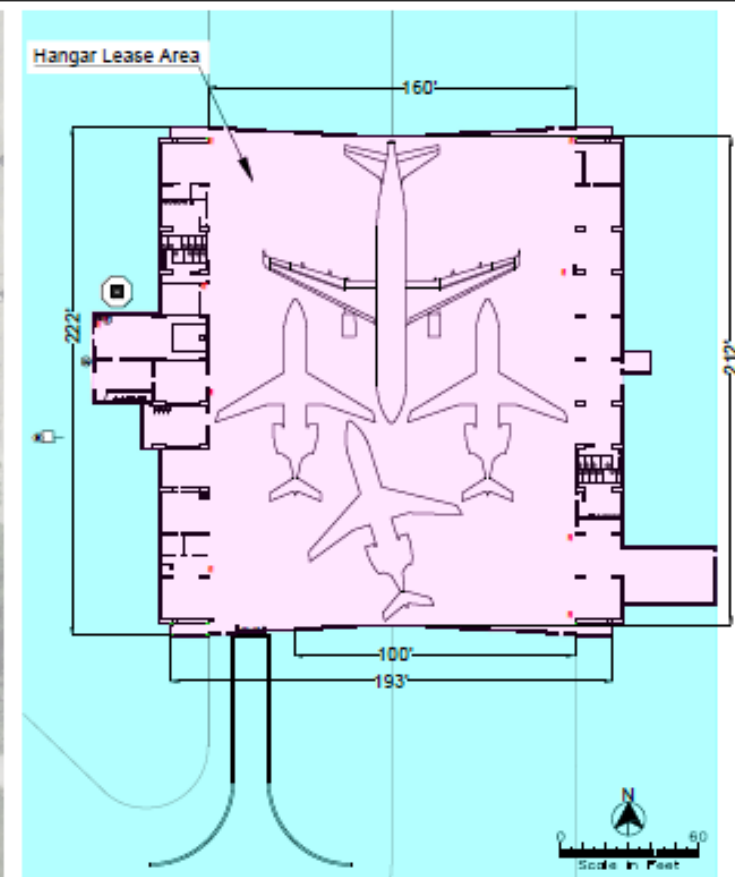
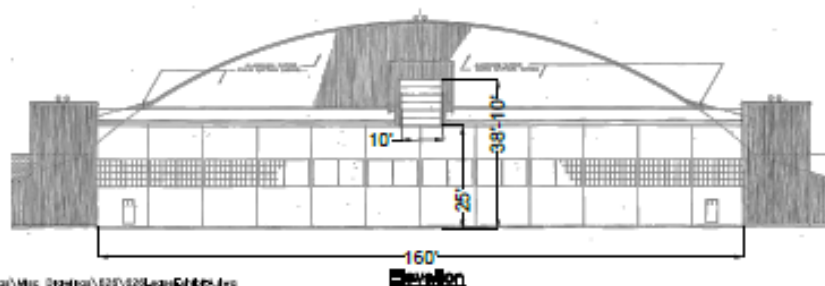
CODE NAME

SHEET NUMBER

0001



Immediate space for 1 vision Aviation Growth



Hangar 626
2825 Arnold Court
Hangar Area - 35,867 S.F.
Shop Space East Area - 5,588 S.F.
Office West Area - 6733 S.F.
Total Hangar Area - 47,188 S.F.

Maximum Facility Height - 38 ft-10 in.
Maximum Facility Wingspan - 160 ft.

Power
800A 480V 3 Phase

Gas
1 1/4" Service

Water
2" Service
No Fire Suppression

Drawing Number 3123-01-23



3237 ARNOLD, SALINA, KS 67406
(785-827-3914 FAX: 785-827-2221)

None REVISIONS
MRC DESIGNED BY
MRC DRAWN BY
As Shown SCALE
06/17/23, 945 DATE

SALINA AIRPORT AUTHORITY
Hangar 626 Exhibit A

1
OF
1

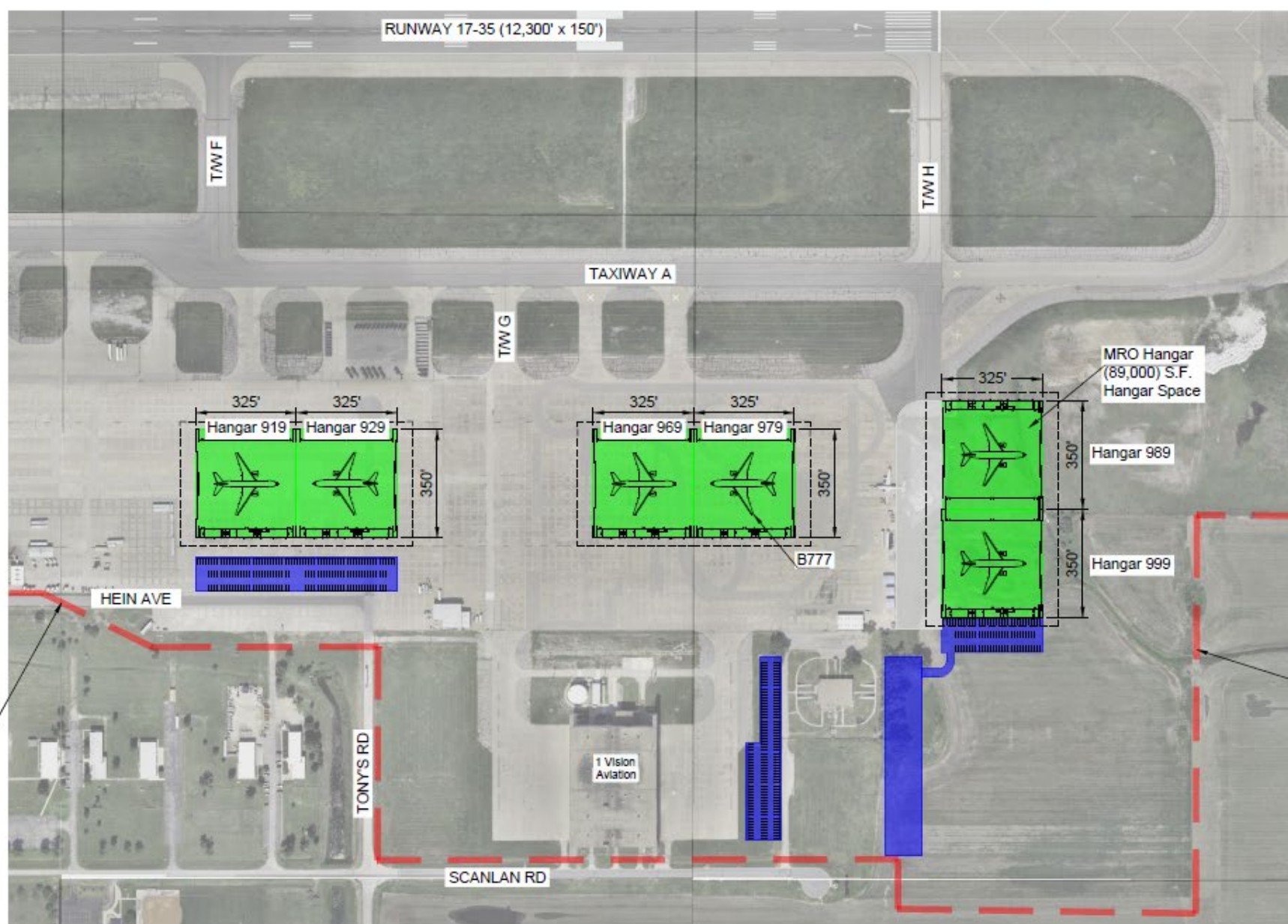


New MRO
Hangar
Construction

SLN North Ramp
Development

Planned for the
construction of
650,000 SF of new
MRO Hangar Space

*Maintenance,
repair, and
overhaul*



Hangar Specs
 Door Width = 272 FT
 Door Height = 70 FT
 Hangar Space 89,000 SQ FT

Office/Shop Space
 300 x 30 = 9,000 SQ FT

Salina Airport
 Authority Property
 Boundary Line



Drawing Number 3157-05-23

SALINA Airport
 Authority

3237 ARNOLD, SALINA, KS 67401
 (785-827-3914 FAX: 785-827-2221)

None : REVISIONS

MNC : DESIGNED BY

MNC : DRAWN BY

1 - 800 : SCALE

05/16/28, 145 : DATE

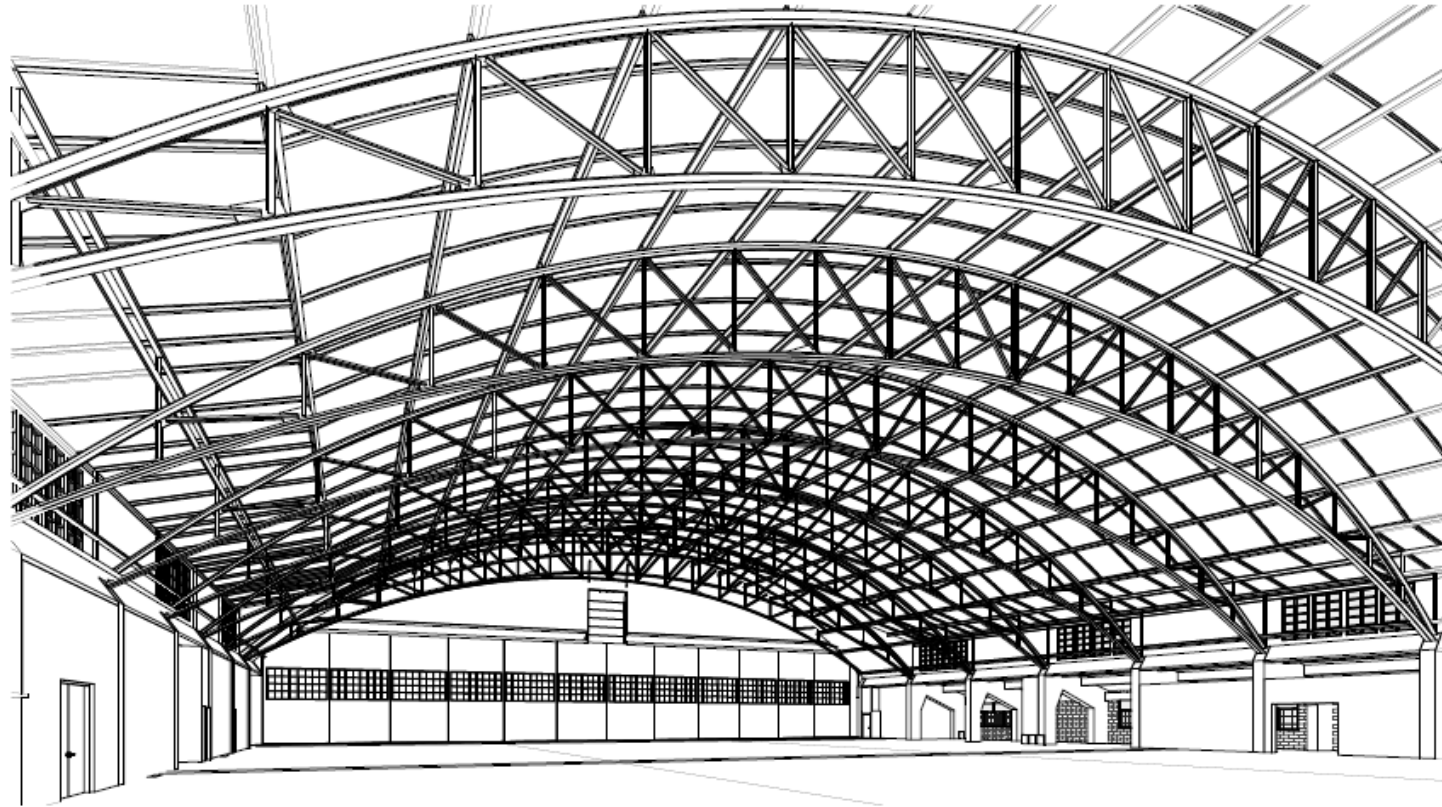
MRO Hangar Dimensions and Size

SALINA AIRPORT AUTHORITY
 North Ramp Development MRO Hangar

1
 OF
 1

Aviation
Workforce
Recruitment
and Training

A REMODEL OF
SAA Hangar 626
2625 Arnold Court Salina, Kansas



Aviation Innovation and Maintenance (AIM)
Center of Excellence

Architect
Architect One, Inc.
906 S Kansas Ave #200
Topeka, KS 66603
Phone: 785.271.7010
Fax: 785.271.7020

Architect
Hutton
916 S Kansas
Topeka, KS 66603
Phone: 785.242.8860

AO
Architect
One
1000
Salina, Kansas
67401-1000
Phone: 785.271.7010
Fax: 785.271.7020

PROPOSED DOCUMENT
NOT FOR CONSTRUCTION

A REMODEL OF
SAA Hangar 626
2625 Arnold Court
Salina, Kansas

PROJECT NUMBER	20-05
PROJECT ARCHITECT	AO
PROJECT MANAGER	ADT
DRAWN BY	Fisher
CHECKED BY	Chenier
DATE DATE	07/10/23
DATE RECORD	SO

REVISIONS

SHEET TITLE

Center Space

CORE SPACE

SHEET NUMBER

0001



- Apprenticeship training
- Shared facilities for aviation workforce training
- Best practices and advanced technology training
- Leadership training
- Airframe and power plant
- Hydraulics
- Avionics
- Composites

Professional Pilot Training

400 Student Pilots

K-State Salina is a leader in
Professional Airline Pilot Training.



Aerospace Innovation and Simulation



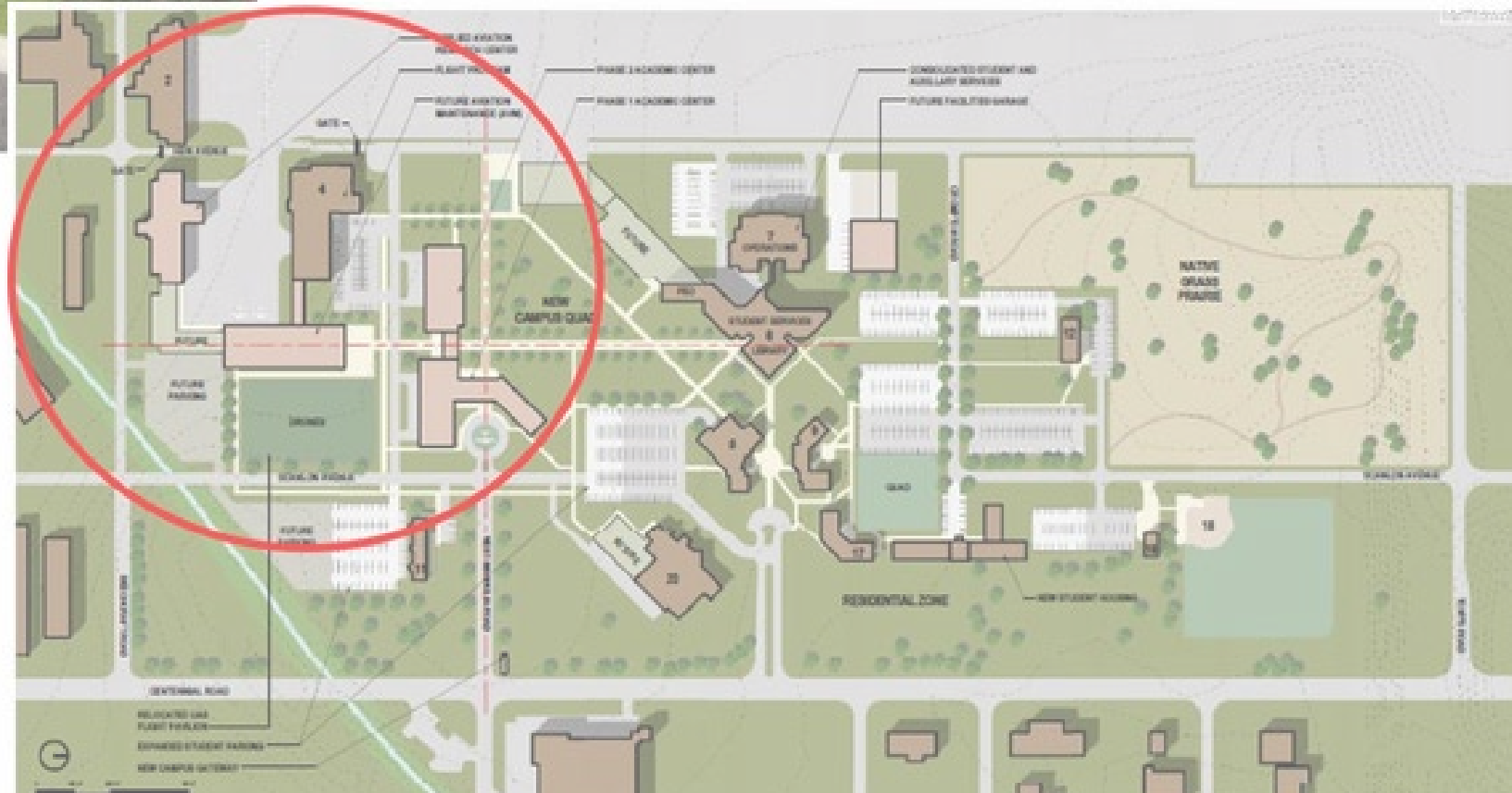
K-State Salina Aviation and Aerospace Campus growth to be supported by construction of a new 58,400 SF Facility to be home for the K-AIRES Center



- World leading simulations
 - Aerospace
 - Advanced Manufacturing
 - Department of Defense
 - Immersive Environments
- Department of Defense
 - K-State Salina
 - Tyrell Corporation
 - Intel
 - NVIDIA
 - General Atomics ASI

Kansas Advanced Immersive Research for Emergent Systems (K-AIRES) Center

- 58,451 SF
- \$38.3 M



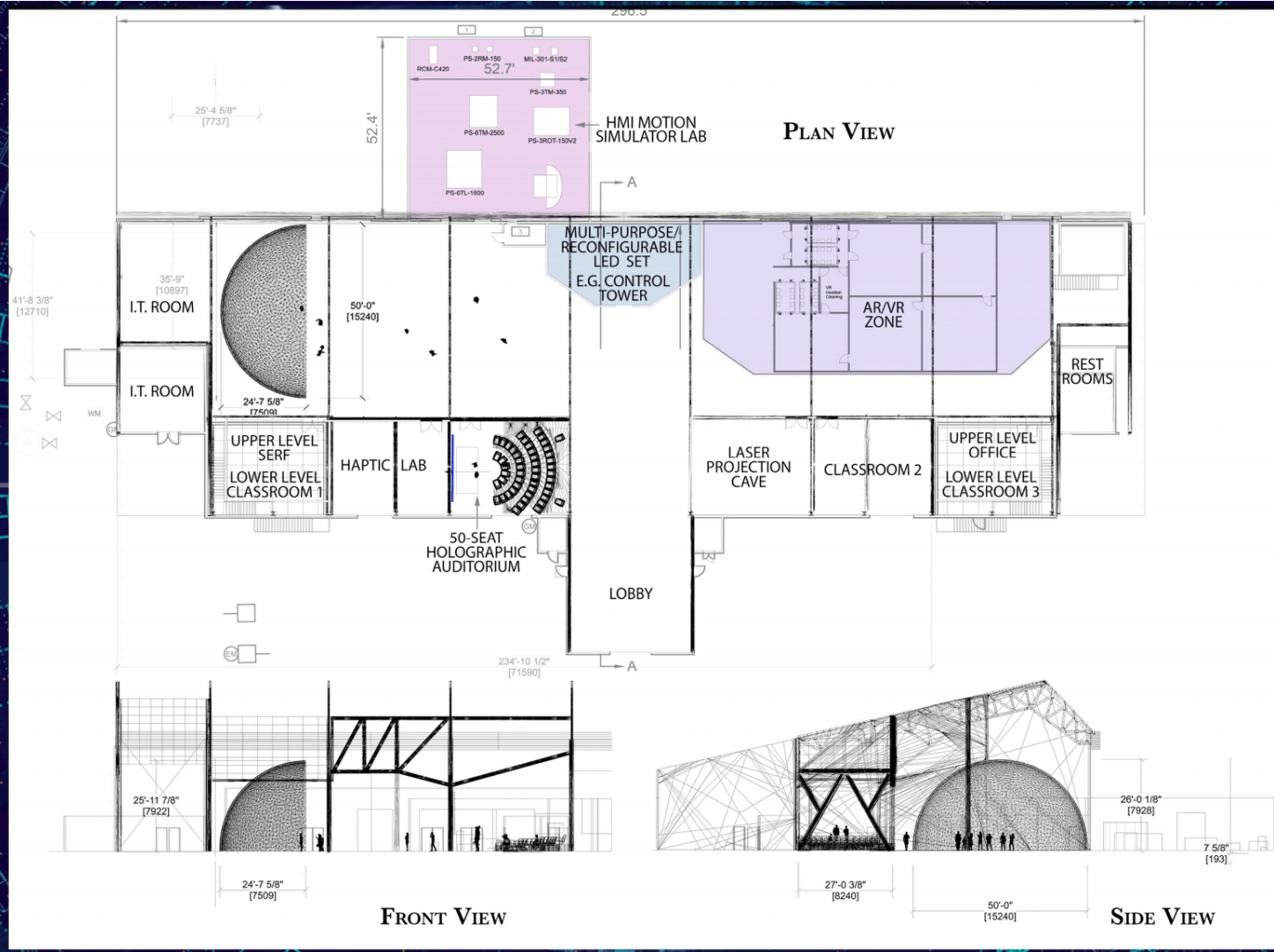


BEECHCRAFT ROAD IMPROVEMENTS

JULY 14, 2017



- 1. KANSAS ADVANCED SIMULATION CENTER \$50M
- 2. AVIATION TRAINING CENTER OF EXCELLENCE \$30M
- 3. MODEL FACTORY TEACHING & RESEARCH CENTER \$28M







SLN Military Aviation

*The average annual
economic impact of
military training
events exceeds
\$2.4M*

Military Operations

- Ft. Riley APOE Flights
- New AASF#2 facility construction
- Smoky Hill Weapons Range

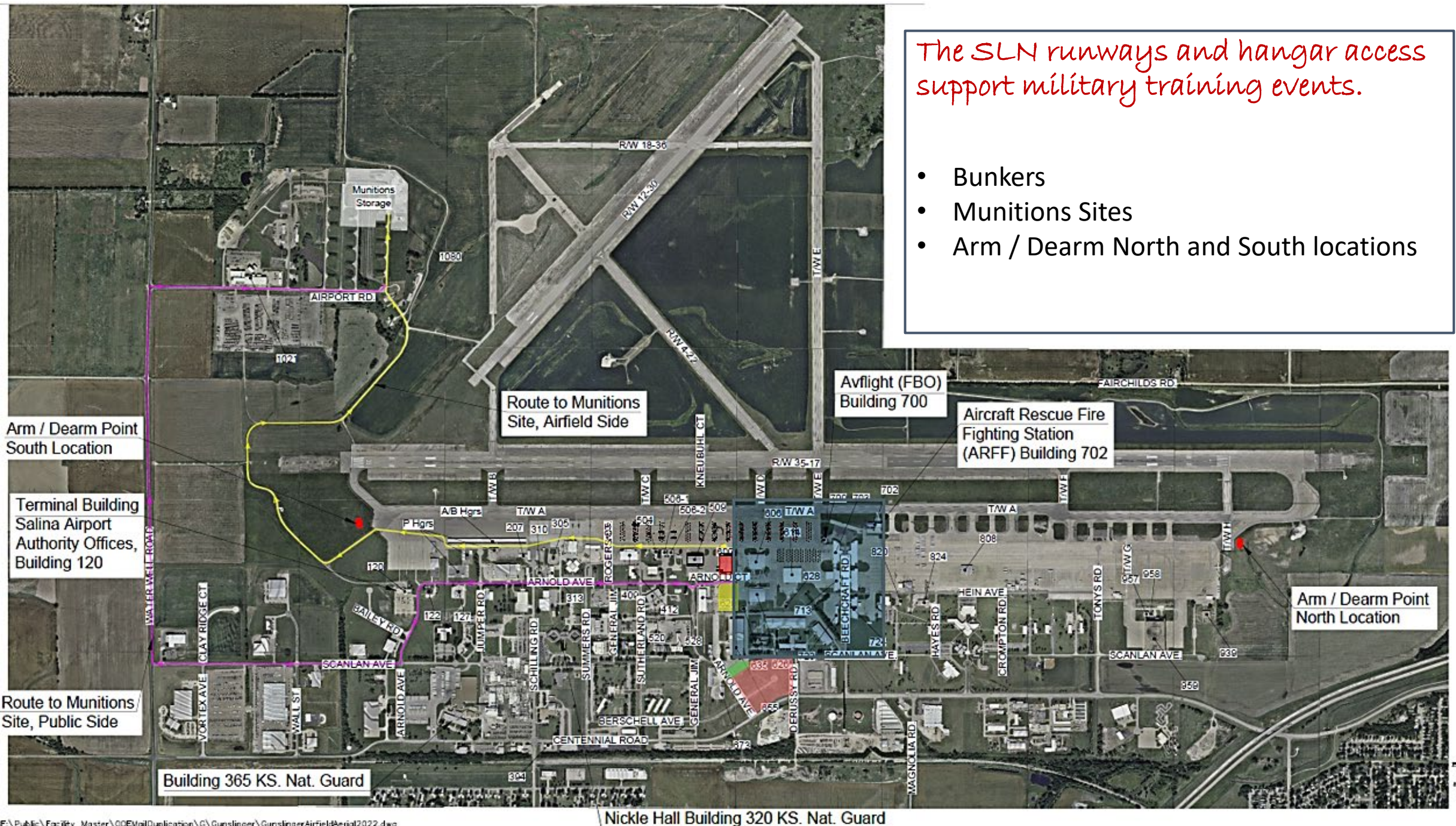




The proximity of the Smoky Hill ANG Range draws military aircraft units to SLN.

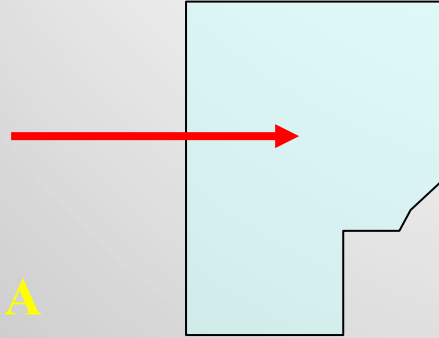
The SLN runways and hangar access support military training events.

- Bunkers
- Munitions Sites
- Arm / Dearn North and South locations

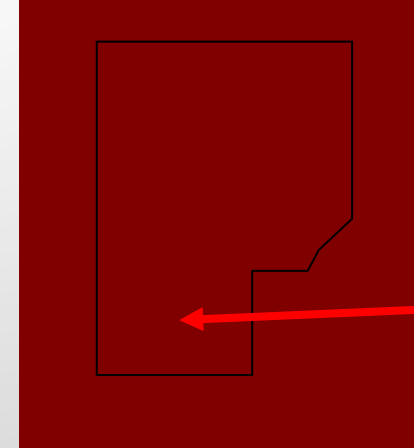


SMOKY AIRSPACE

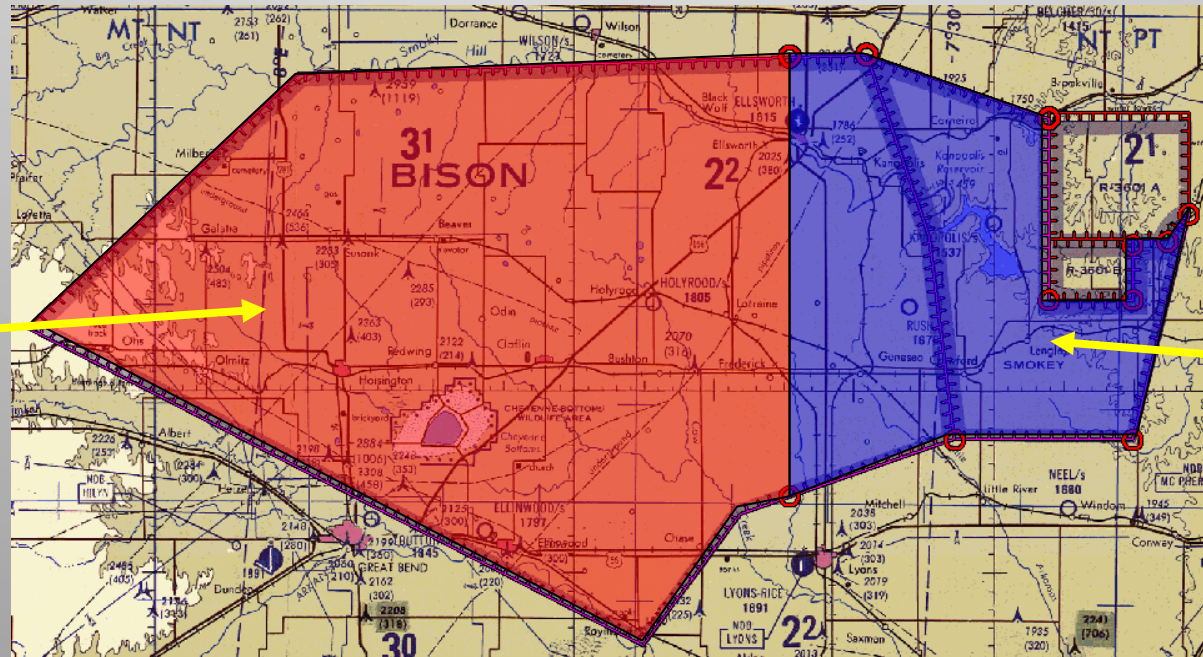
R3601A
SFC-FL180



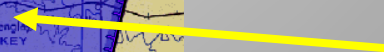
R3601B
FL180-FL230



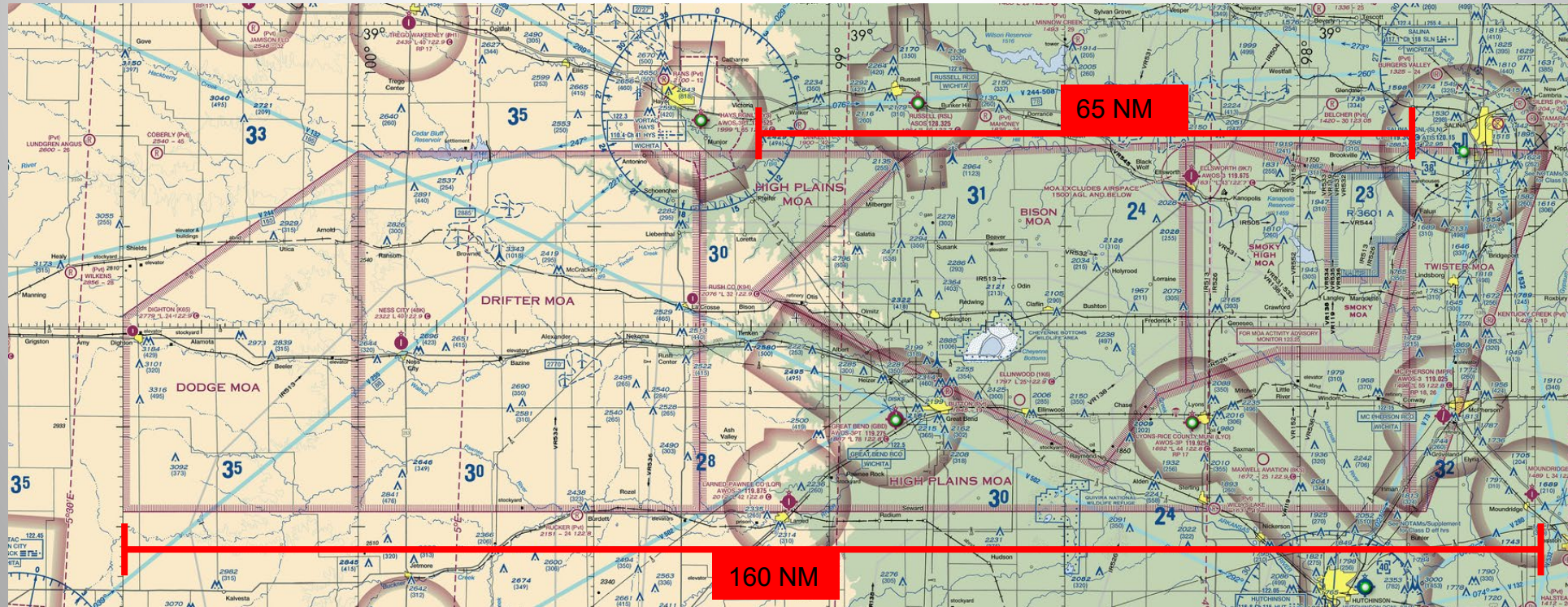
BISON MOA
1000AGL-FL180



SMOKY MOA
500AGL-FL180



BMOC ASPC



DODGE:	FL100-500
DRIFTER:	FL100-500
HIGH PLAINS:	FL100-500
TWISTER:	FL100-500

BMOC STIPULATIONS:

NOV-APR ONLY

138TH FW ONLY

ENTIRE BMOC 12 TIMES ANNUALLY

TWISTER/HIGH PLAINS: 60 TIMES

Typical Airspace is Bison/Smoky/R3601 Only: SFC-FL230



SLN Airfield Development

AIP Priorities

- Fuel farm design and construction
- Runway 12/30 rehabilitation design and construction
- SLN terminal building expansion



Fuel farm construction will result in 200,000 gallons of new above ground storage tanks, covered loading and unloading truck lanes and storage for SAF jet fuel. Expected cost: \$5M.

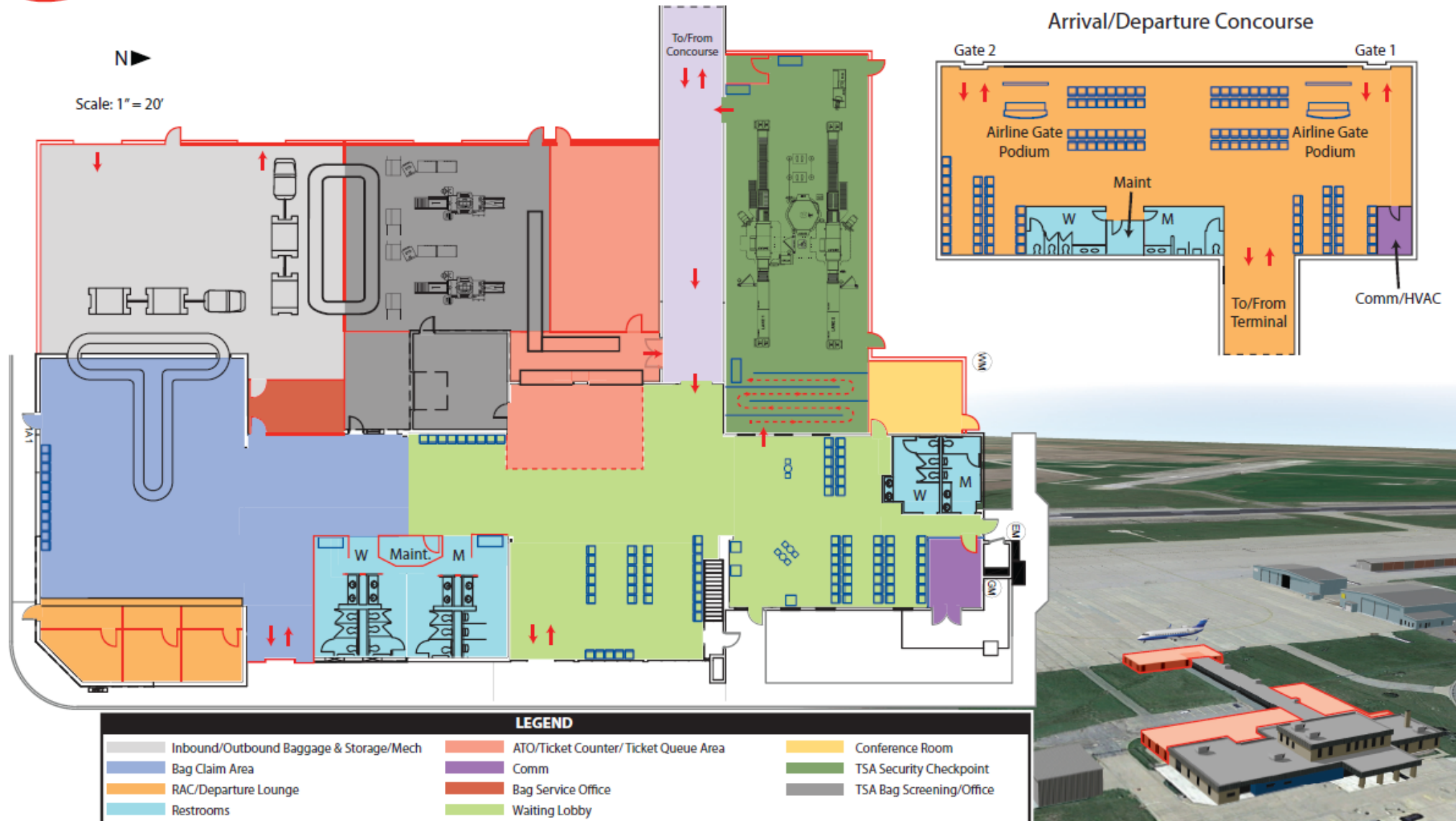
Ongoing Airfield Improvements

The rehabilitation of Runway 12/30 is an essential project.

The runway is the airport's crosswind runway and handles traffic when Runway 17/35 is closed.

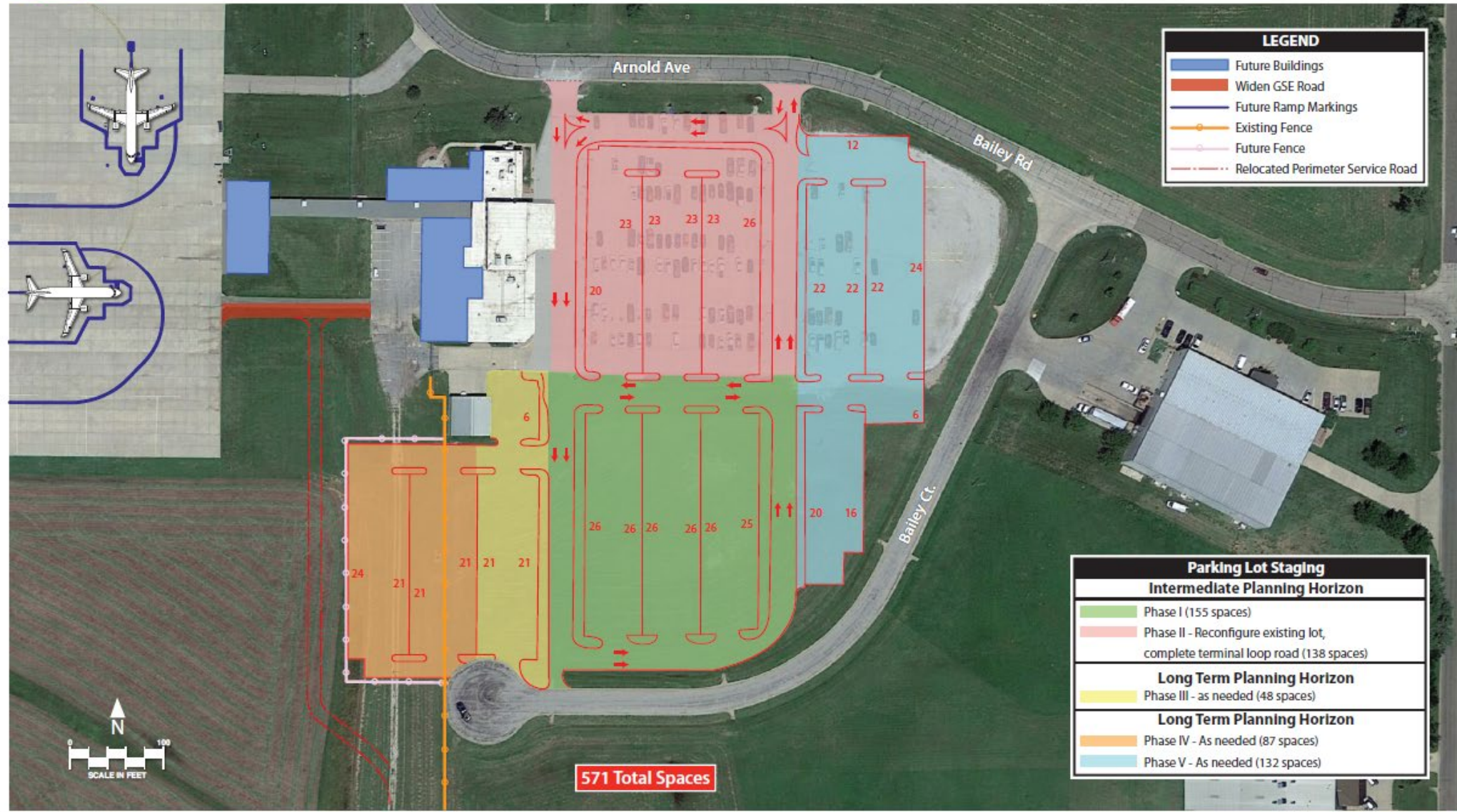
Estimated cost:
\$7.5M





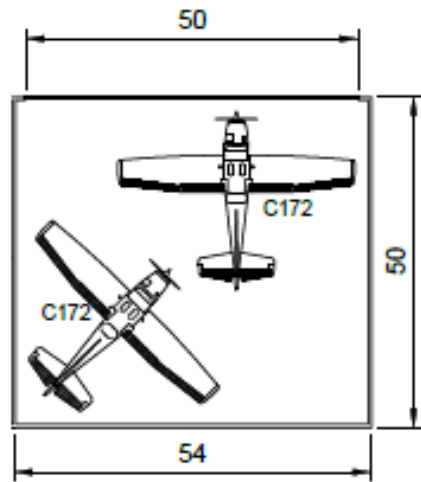
The SLN terminal building expansion will meet the needs and requirements for passenger growth.

Estimated cost: \$12M.



The expansion of terminal building parking will meet forecasted passenger growth.

General Aviation Growth

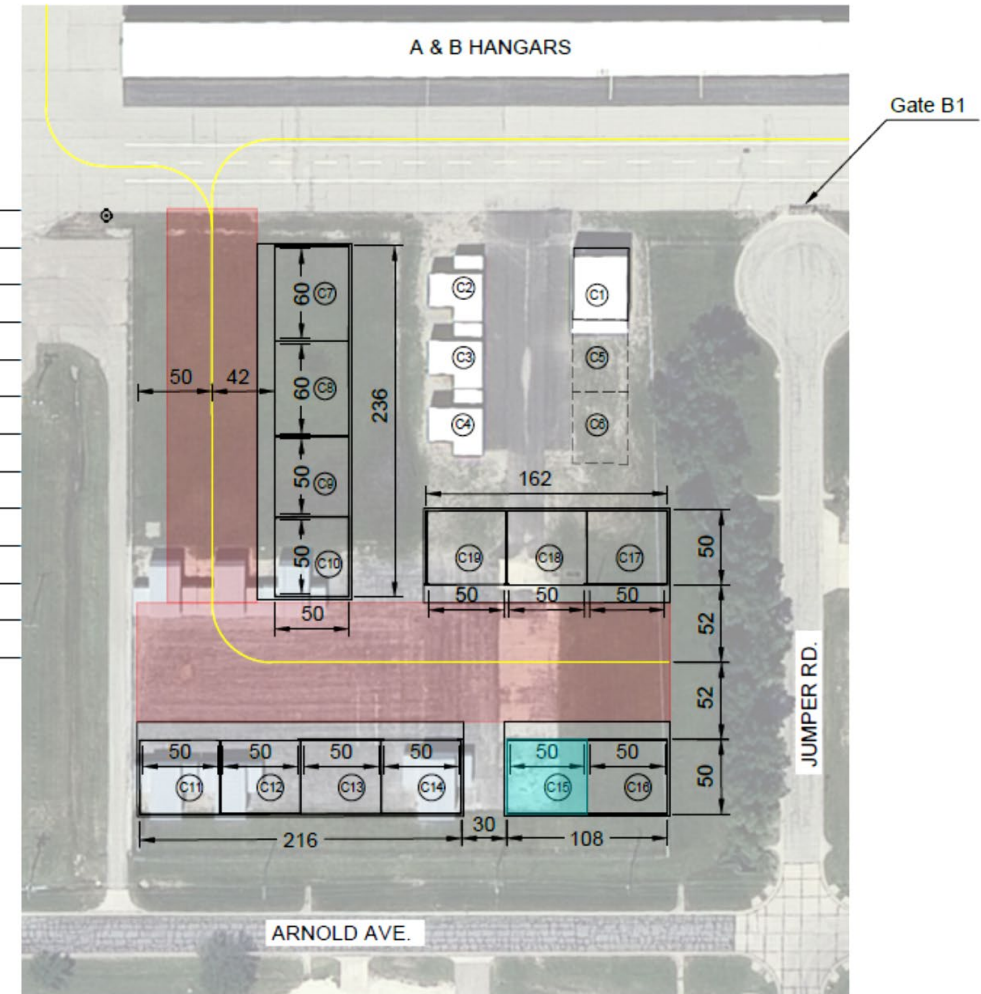


Box Hangar

54' Wide x 50' Deep
50' x 15' High Hydraulic Door
Roof is Sloped to The Rear

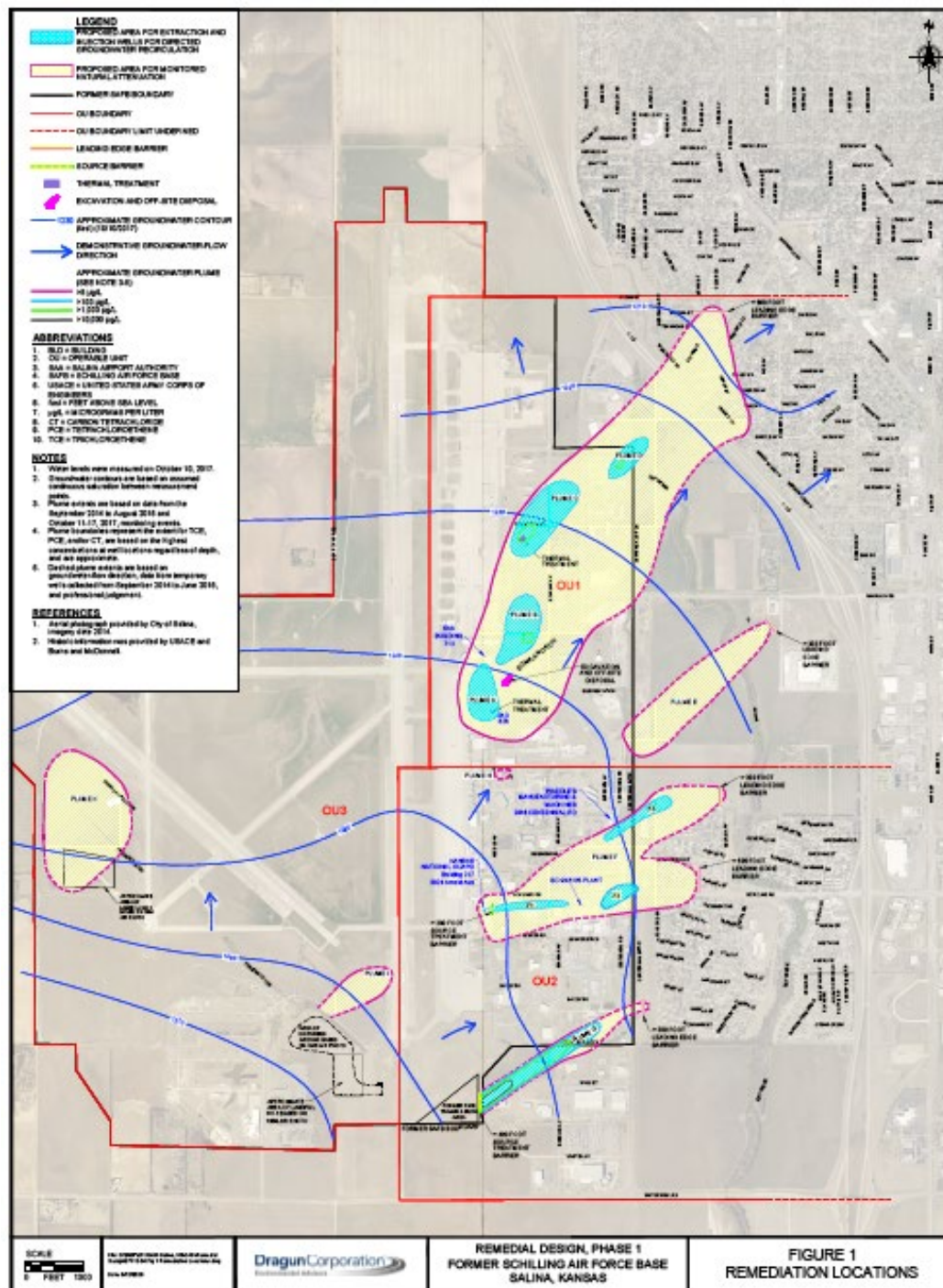


C-Hangar	Tenant
C7	Leased
C8	Leased
C9	Leased
C10	Leased
C11	Leased
C12	Leased
C13	
C14	Leased
C15	Leased
C16	
C17	Leased
C18	Leased
C19	Leased



C-HANGARS
Site Layout

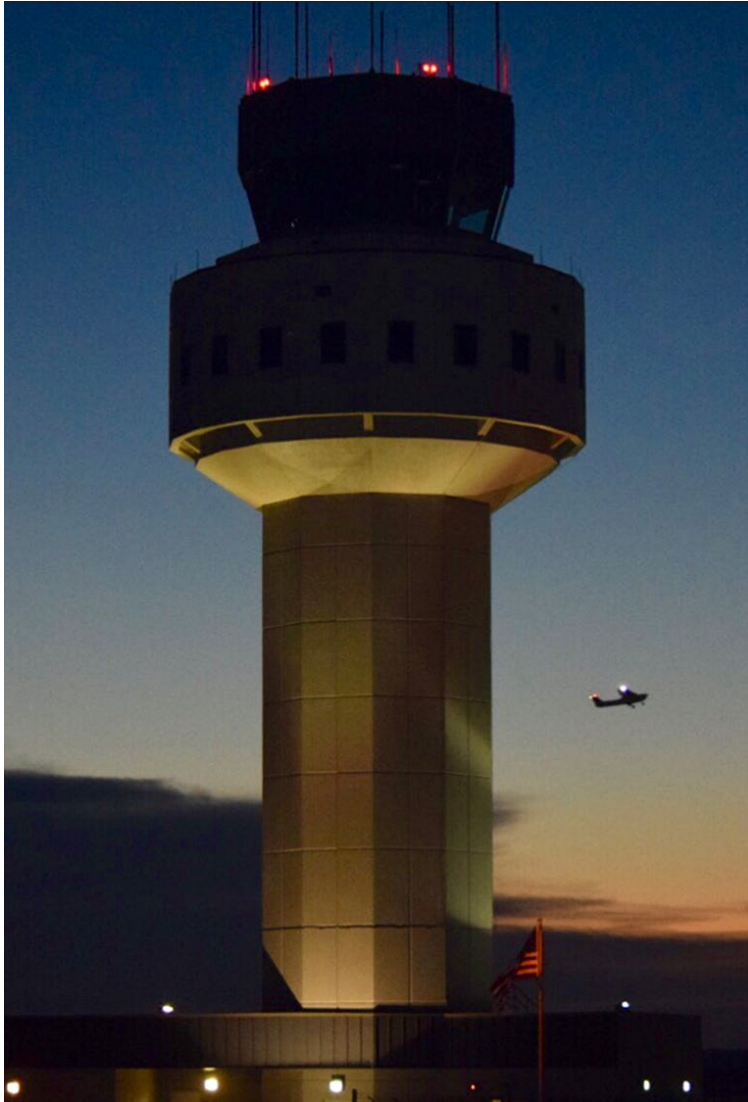
Environmental Stewardship



- Former Schilling AFB Project
- \$70M Clean up underway
- Supports continued Salina Regional Airport and Airport Industrial Area growth

Questions & Discussion





Timothy F. Rogers, A.A.E

Executive Director
trogers@salair.org



***SALINA* Airport**
Authority

Salina, Kansas, USA