

Salina Regional Airport Capabilities

Salina Airport Authority



Salina Regional Airport Capabilities

- 323,200 SF total hangar, shop, and office space available for lease
- Suited for MRO operations for air carrier, business, and military aircraft
- 12,300 ft primary runway that accommodates all air carrier, business, and military aircraft types
- Adjacent to Smoky Hill ANG Range
- Avflight SLN ground support services for all air carrier, business, and military aircraft types
- Located adjacent to the Kansas State University Aviation manned and unmanned programs
- Custom proposals detailing lease options and economic development incentives available upon request



H600—2720 Arnold Court

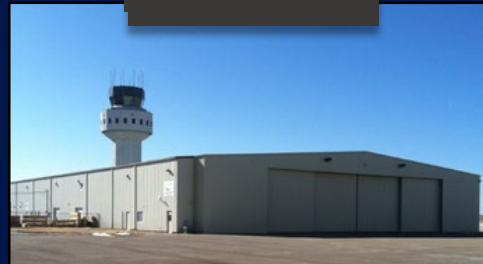


H606—2630 Arnold Court

H959—2044 Scanlan Avenue



H509—2734 Arnold Court



Salina Airport Authority's Strategic Partners

Schilling Aviation Service




- Airframe & Powerplant Maintenance & Repair
- 100-Hour Annual Inspections
- Two IAs on staff
- Parts Capabilities
- Single- & Multi-Engine Aircraft

2010 Rogers Ct, Salina, KS 67401 **785.404.6025**

United Airlines operated by SkyWest

Daily flights to/from Salina Regional Airport, Denver International Airport, and Chicago O'Hare International Airport

3237 Arnold Avenue, Salina, KS 67401
1.800.UNITED1 (1.800.864.8331)



Operated by SkyWest Airlines


FBO, Fuel Provider, and Aircraft Ground Support - 100LL, Jet A, Mogas



Aviation Fuel, oxygen, aircraft parking (ramp or tiedown), hangar space, GPU/power cart, passenger terminal and lounge, catering and pilot supplies. Government fuel contractor.

2035 Beechcraft Road, Salina, KS 67401 **785.825.6739** Unicom: 122.95

1 Vision Aviation



Part 145 FAA repair station, qualified and trained to perform maintenance on many fleet types including transport category aircraft, certified to work on Transport Canada aircraft, ADS-B installation, routine maintenance, airframe modifications, GPS Installation, glass panels, aviation mechanics, avionics, and more.

2044 Scanlan Avenue, Salina, KS 67401
Justine@1vision.aero www.1vision.aero

National Institute for Aviation Research

University-based aviation research, design, testing, certification, and training in the aviation manufacturing industry.

1845 Fairmount St., Wichita, KS 67260 316.978-3456



Kansas State Polytechnic

University-based Professional Pilot and Aircraft Maintenance Training Programs

2310 Centennial Road, Salina, KS 67401
785.826.2640



LifeSave Transport

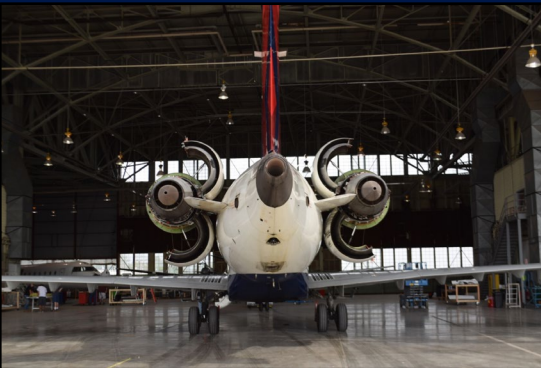
24/7 emergency transportation service

2013 Kneubuhl Court, Salina, KS 67401
Administration - 316.932.1440
Emergency Line - 1.877.213.5433



Salina Regional Airport Airfield Capabilities

- ARFF Index E services available
- Part 145 air carrier and business jet repair station
- Site for new hangar construction
- Runway 17/35
 - 12,300 ft x 150 ft asphalt runway, not grooved
 - Suitable for runway performance testing
- Salina Air Traffic Control Tower
 - Full radar coverage and coordination with Kansas City Center

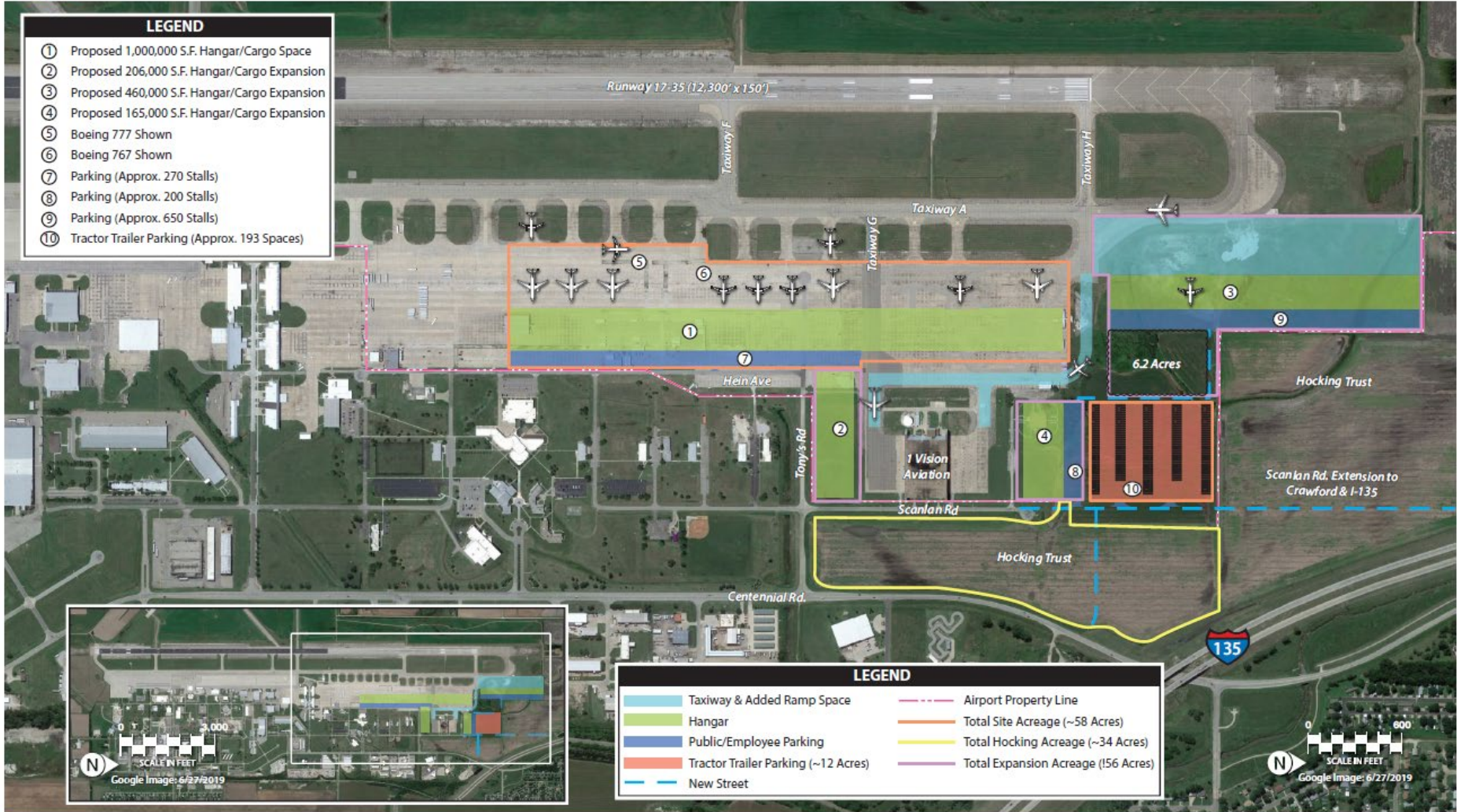


MRO & Air Cargo Built-to-Suite Sites



LEGEND

- ① Proposed 1,000,000 S.F. Hangar/Cargo Space
- ② Proposed 206,000 S.F. Hangar/Cargo Expansion
- ③ Proposed 460,000 S.F. Hangar/Cargo Expansion
- ④ Proposed 165,000 S.F. Hangar/Cargo Expansion
- ⑤ Boeing 777 Shown
- ⑥ Boeing 767 Shown
- ⑦ Parking (Approx. 270 Stalls)
- ⑧ Parking (Approx. 200 Stalls)
- ⑨ Parking (Approx. 650 Stalls)
- ⑩ Tractor Trailer Parking (Approx. 193 Spaces)



Air Service



- Nonstop flight service to/from Chicago O'Hare International Airport
- Nonstop flight service to/from Denver International Airport
- Free Parking

Fly
SLN Airport

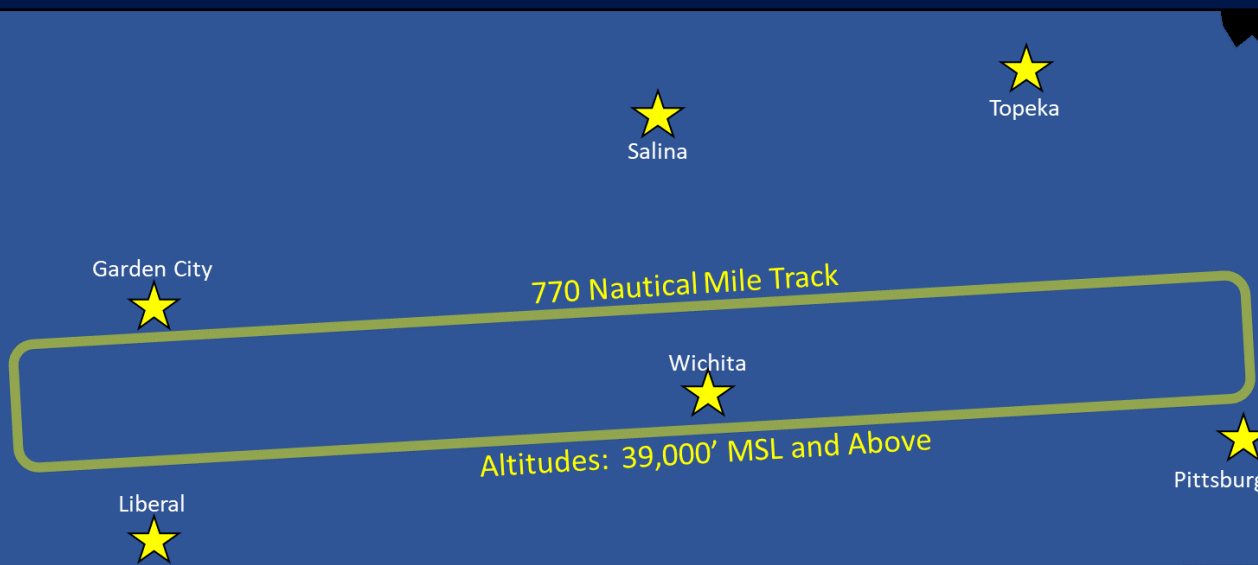


Kansas Supersonic Transportation Corridor



Kansas is paving the way for supersonic trials of aircraft through an agreement with the FAA to establish a SSTC. The 770-nm corridor, designed as a bi-directional “racetrack” runs from southwest of Garden City, KS to Pittsburg, KS. With this supersonic flight corridor, Kansas will have a unique roll in the next generation of supersonic transportation.

KDOT is working with WSU’s NIAR to collect noise data and live telemetry from the aircraft. This partnership provides a sophisticated and cost-effective flight test capability within reach of every major aircraft manufacturer in the country.



The General Aviation Manufacturers Association (GAMA) is stating it will help in the “re-birth” of civil supersonic travel. The validation of these technological breakthroughs using sophisticated ground acoustic and telemetry sensors will provide the necessary data to assist global regulators and policymakers in modernizing supersonic flight policies.

For More Information:

SALINA Airport
Authority

Tim Rogers, A.A.E.
Executive Director
785-342-1199 (c)
trogers@salair.org

Shelli Swanson, C.M.
*Director of Finance &
Administration*
785-577-4647 (c)
shellis@salair.org

