



## Ground Support Equipment & Logistics

*As of January 1, 2019*



For questions or to rent GSE or  
Logistics Services, please contact  
Shelli Swanson at 785-827-3914  
or email [shellis@salair.org](mailto:shellis@salair.org)

# Vehicles and Storage

**Description:**

Chevy 12 Passenger  
Van



**Description:**

GMC Box Truck  
L 23'9" W 7'9" H 8'6"



**Description:**

International Semi  
Flatbed Truck



**Description:**

1986 International  
Series Stake Bed  
Truck



**Description:**

Conex Box  
Quantity: 2



# Ground Support Equipment

**Description:**

PS1: F350, Self-propelled, Passenger Air Stair  
See attachment for height range



**Description:**

PS4: Self-propelled, Passenger Air Stair  
See attachment for height range



**Description:**

PS2: Passenger Aircraft Air Stair  
See attachment for height range



**Description:**

S&S Tug, Mobile Belt Loader, 11' Height Range



**Description:**

PS3: 150 Passenger Air Stair, Towable  
See attachment for height range



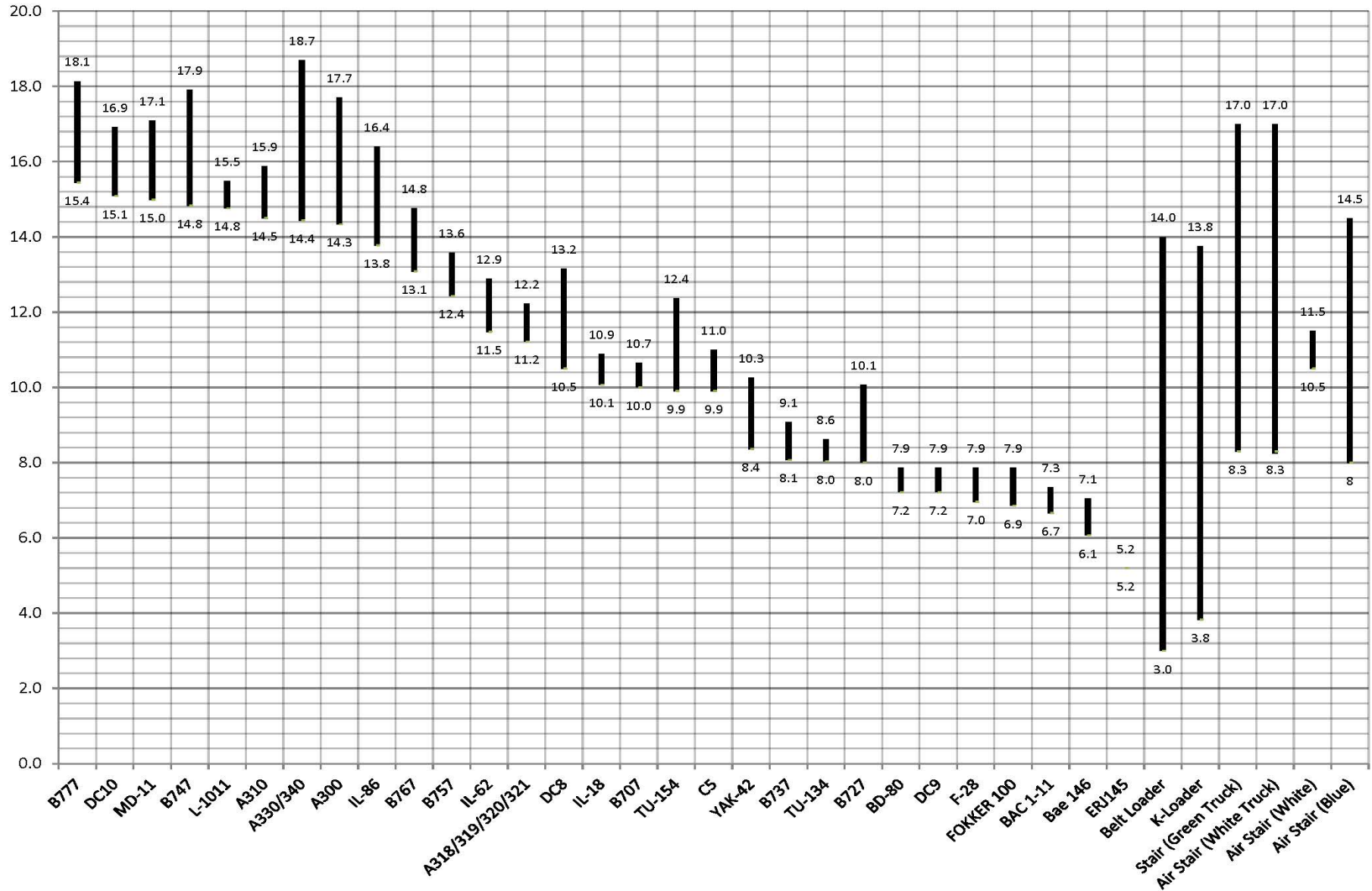
**Description:**

Portable Loading Ramp, L 36' x W 7'



# Height Range

Aircraft Door Sill Heights in Feet (Minimum to Maximum)





# Ground Support Equipment

**Description:**

Grey 2K Forklift,  
10.8' Height Range



**Description:**

10K Forklift,  
12.6' Height Range



**Description:**

4K Forklift,  
10.3' Height Range



**Description:**

10K Forklift,  
8.25' Height Range



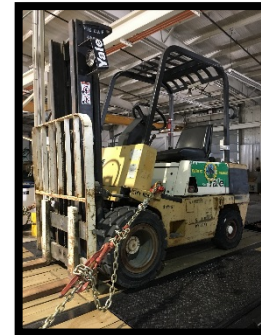
**Description:**

Man Lift Cage  
for fork lift  
Platform size:



**Description:**

4K Forklift,  
9.5' Height Range



# Ground Support Equipment

## Description:

Hobart AC Ground  
Power Unit 400 Hz  
Solid State 460 VAC  
50-60Hz



## Description:

11, Tri-max wheeled  
fire extinguishers



## Description:

Hobart AC Ground  
Power Unit 28 VDC  
Solid State, 3ph/208-  
230-460V/60Hz



## Description:

Flood Lamp  
30' tall



## Description:

3 sets of Portable  
Flood Lamp  
35' tall



## Description:

Jack up Work Stand,  
10' Height Range



# Ground Support Equipment

**Description:**

Landoll Type I De-Icer  
Mil & Civ AC  
Up to B757  
40.5'  
1,640 gallons  
165 gallons Type IV  
anti-Ice



**Description:**

MB2  
Aircraft Tug  
15 Ton Weight  
Limit



**Description:**

Aircraft Tug,  
4,000 lbs Weight  
Limit



**Description:**

Bobtail tug  
5,000 lbs Weight  
Limit



**Description:**

Bucket Truck Lift,  
52' Height range



**Description:**

Northwestern tug  
4,000 lbs Weight  
Limit





# Ground Support Equipment and Logistics Fee Schedule

Equipment	Hourly Rate	Daily Rate
AC Ground Power Units	40	115
Air Stairs	n/a	150
Aircraft Tugs	45	155
Belt Loader	n/a	150
Boom Lift	60	150
Deicer Vehicles		150 (per aircraft)
FOD Busters (ea)	30	65
Forklifts	60	155
Jack up Work Stand	55	145
K-Loaders	60	155
Man Lift Cage	20	65
Portable Flood Lights	60	190
Portable Loading Ramp	60	145
Tri-Max Wheeled Fire Extinguishers (12)	35	95
Vehicles	\$ 45	\$ 155

Multiple day FOL activities qualify for the \$195 per day logistics rate which includes access to all equipment on this schedule.

*Rates include delivery and return of equipment to any facility on the Airport.  
Equipment will be positioned fueled.  
Any refueling, refilling or recharging required will be the responsibility of the lessee.*

\* Minimum of 1 hour for equipment rental