

- GENERAL NOTES:**
- EXISTING RUNWAY END ELEVATIONS, END COORDINATES, BEARINGS, AND LENGTHS NOTED IN THIS ALP FROM SURVEY PERFORMED BY WILSON AND COMPANY, KANSAS CITY, MO, AND PROCESSED BY MARTINEZ GEOSPATIAL, EAGAN, MN.
 - HORIZONTAL DATUM: NORTH AMERICAN DATUM 1983 - NAD83
VERTICAL DATUM: NORTH AMERICAN DATUM 1988 - NAVD88.
 - SEE TERMINAL AREA DRAWING, SHEETS 32 AND 33 FOR LANDSIDE DETAILS.
 - SEE INNER PORTION OF THE APPROACH SURFACE DRAWINGS FOR THRESHOLD SITING SURFACE PENETRATIONS
 - MAGNETIC DECLINATION FROM NOAA NATIONAL GEOPHYSICAL DATA CENTER.
 - CURRENT ELEVATIONS AT ROADWAY/APPROACH SURFACE INTERSECTIONS ARE ACTUAL ELEVATIONS AND DO NOT REFLECT 17, 15, OR 10' ADJUSTMENTS.
 - 5' LINE OF SIGHT NOT MET BETWEEN ALL RUNWAYS.
 - RUNWAY 4-22 WILL BE CONVERTED TO TAXIWAY 'D' AND WILL MEET THE TDG2 STANDARD WITH A 35' TAXIWAY WIDTH AND A 15' SHOULDER WIDTH.

NGS SURVEY CONTROL STATIONS

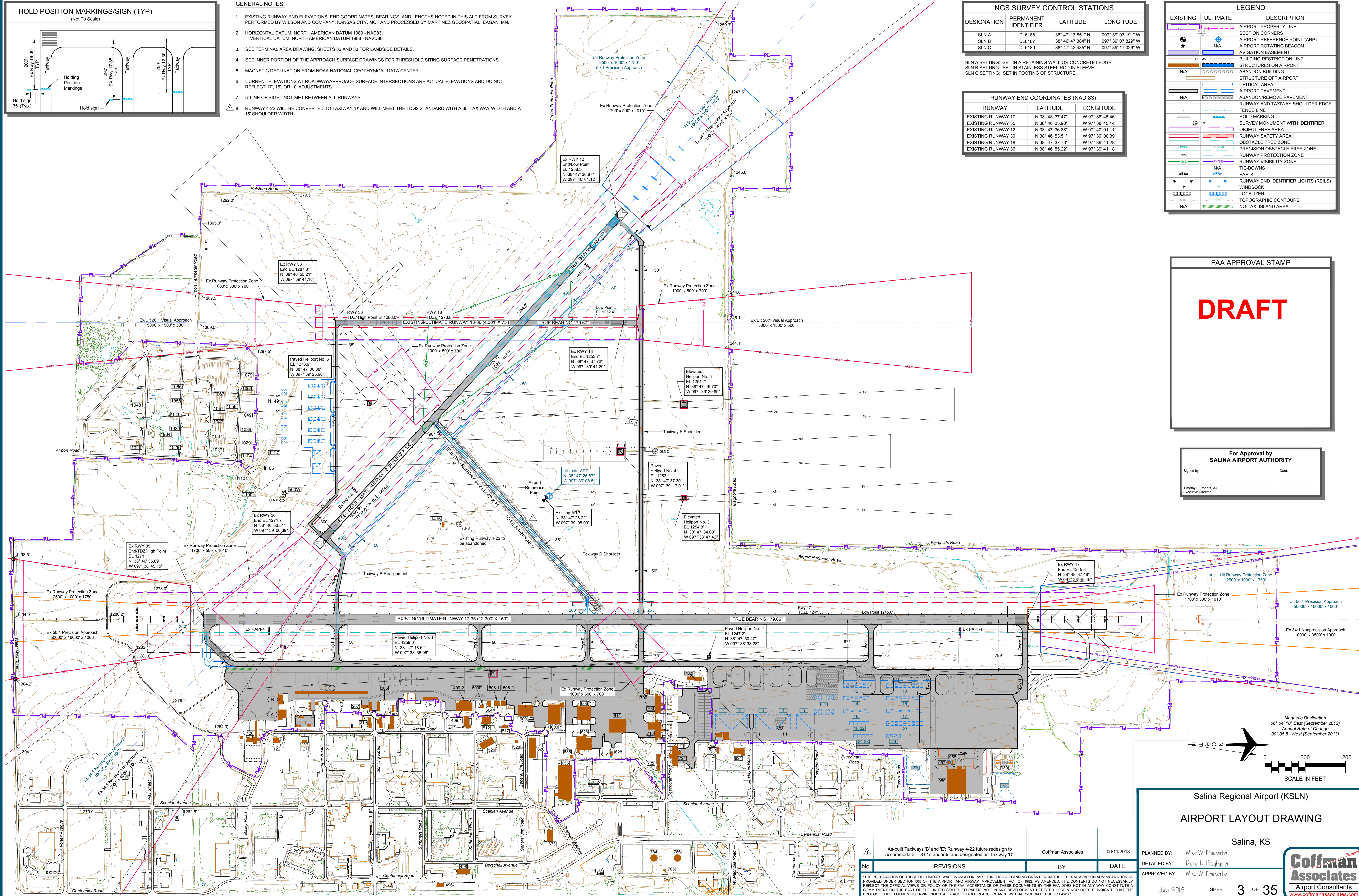
DESIGNATION	PERMANENT IDENTIFIER	LATITUDE	LONGITUDE
SLN A	DL6188	38° 47' 13.551" N	097° 39' 03.191" W
SLN B	DL6187	38° 46' 47.394" N	097° 39' 07.829" W
SLN C	DL6189	38° 47' 42.485" N	097° 39' 17.026" W

RUNWAY END COORDINATES (NAD 83)

RUNWAY	LATITUDE	LONGITUDE
EXISTING RUNWAY 17	N 38° 48' 37.47"	W 97° 38' 45.46"
EXISTING RUNWAY 35	N 38° 46' 35.90"	W 97° 38' 45.14"
EXISTING RUNWAY 12	N 38° 47' 36.88"	W 97° 40' 01.11"
EXISTING RUNWAY 30	N 38° 46' 53.51"	W 97° 39' 00.39"
EXISTING RUNWAY 18	N 38° 47' 37.73"	W 97° 39' 41.28"
EXISTING RUNWAY 36	N 38° 46' 55.22"	W 97° 39' 41.18"

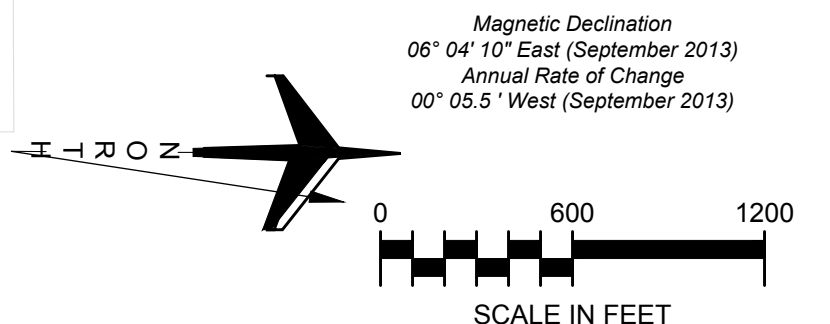
LEGEND

EXISTING	ULTIMATE	DESCRIPTION
[Symbol]	[Symbol]	AIRPORT PROPERTY LINE
[Symbol]	[Symbol]	SECTION CORNERS
[Symbol]	[Symbol]	AIRPORT REFERENCE POINT (ARP)
[Symbol]	[Symbol]	AIRPORT ROTATING BEACON
[Symbol]	[Symbol]	AVIGATION EASEMENT
[Symbol]	[Symbol]	BUILDING RESTRICTION LINE
[Symbol]	[Symbol]	STRUCTURES ON AIRPORT
[Symbol]	[Symbol]	ABANDON BUILDING
[Symbol]	[Symbol]	STRUCTURE OFF AIRPORT
[Symbol]	[Symbol]	CRITICAL AREA
[Symbol]	[Symbol]	AIRPORT PAVEMENT
[Symbol]	[Symbol]	ABANDON/REMOVE PAVEMENT
[Symbol]	[Symbol]	RUNWAY AND TAXIWAY SHOULDER EDGE
[Symbol]	[Symbol]	FENCE LINE
[Symbol]	[Symbol]	HOLD MARKING
[Symbol]	[Symbol]	SURVEY MONUMENT WITH IDENTIFIER
[Symbol]	[Symbol]	OBJECT FREE AREA
[Symbol]	[Symbol]	RUNWAY SAFETY AREA
[Symbol]	[Symbol]	OBSTACLE FREE ZONE
[Symbol]	[Symbol]	PRECISION OBSTACLE FREE ZONE
[Symbol]	[Symbol]	RUNWAY PROTECTION ZONE
[Symbol]	[Symbol]	RUNWAY VISIBILITY ZONE
[Symbol]	[Symbol]	TIE-DOWNS
[Symbol]	[Symbol]	PAPI-4
[Symbol]	[Symbol]	RUNWAY END IDENTIFIER LIGHTS (REILS)
[Symbol]	[Symbol]	WINDSOCK
[Symbol]	[Symbol]	LOCALIZER
[Symbol]	[Symbol]	TOPOGRAPHIC CONTOURS
[Symbol]	[Symbol]	NO-TAXI ISLAND AREA



For Approval by
SALINA AIRPORT AUTHORITY

Signed by: _____ Date: _____
Timothy F. Rogers, AAE
Executive Director



Salina Regional Airport (KSLN)
AIRPORT LAYOUT DRAWING

Salina, KS

PLANNED BY: Mike W. Dmperko	Coffman Associates Airport Consultants www.coffmanassociates.com
DETAILED BY: Diana L. Pruzbicki	
APPROVED BY: Mike W. Dmperko	

June 2018 SHEET **3** OF **35**

As-built Taxiways 'B' and 'E'; Runway 4-22 future redesign to accommodate TDG2 standards and designated as Taxiway 'D'.
Coffman Associates 06/11/2018

No.	REVISIONS	BY	DATE

THE PREPARATION OF THESE DOCUMENTS WAS FINANCED IN PART THROUGH A PLANNING GRANT FROM THE FEDERAL AVIATION ADMINISTRATION AS PROVIDED UNDER SECTION 505 OF THE AIRPORT AND AIRWAY IMPROVEMENT ACT OF 1982, AS AMENDED. THE CONTENTS DO NOT NECESSARILY REFLECT THE OFFICIAL VIEWS OR POLICY OF THE FAA. ACCEPTANCE OF THESE DOCUMENTS BY THE FAA DOES NOT IN ANY WAY CONSTITUTE A COMMITMENT ON THE PART OF THE UNITED STATES TO PARTICIPATE IN ANY DEVELOPMENT DEPICTED HEREIN NOR DOES IT INDICATE THAT THE PROPOSED DEVELOPMENT IS ENVIRONMENTALLY ACCEPTABLE IN ACCORDANCE WITH APPROPRIATE PUBLIC LAWS.

Coffman Associates | STORE:\CAD\Files\CAD\Hokstad\Salina\ALP As Built Update June 2018\ALP\Sheet 3 SLN ALD As Built.dwg Printed Date: 6/11/18 02:06:18 PM apprbj/cjcm