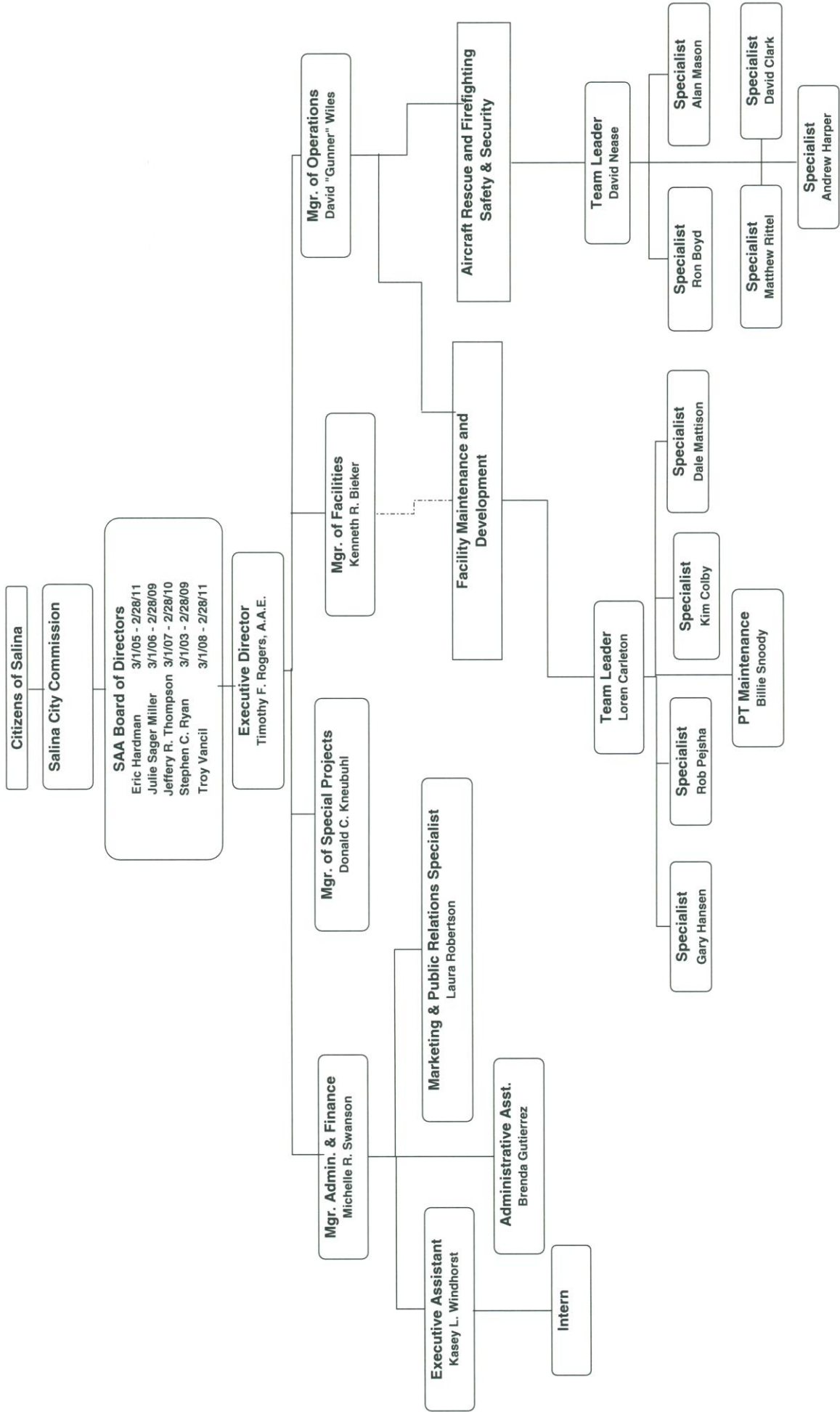




Organization Chart
January 1, 2009



**SAA 2009 Staffing Plan
Budgeted Wages & Salaries**

| | <u>2009 Budget</u> | <u>2008 Budget</u> |
|--------------------------------|------------------------|------------------------|
| Administrative Salaries | \$450,568 | \$405,545 |
| Maintenance Salaries | <u>413,624</u> | <u>403,418</u> |
| Total Salary Expense | \$864,192 | \$808,963 |

Notes:

1. All salary/wages are based upon employee retention objectives, position market value and merit.
2. All wages contingent upon final Board approval of the respective FY budgets.
3. 2009 will be the first full year for the Facilities and Construction Manager position.