

DATE: October 17, 2022
TO: SAA Board of Directors
FROM: Tim Rogers and Shelli Swanson
SUBJECT: **October 19, 2022, SAA Regular Board Meeting**

Enclosed are items for your review prior to Wednesday's meeting. Please note that the meeting will be held in the **first-floor conference room, Hangar 600, 2720 Arnold Ct.** A map showing the location of Hangar 600 is enclosed in your board meeting packet. The meeting is also available via the following GoToMeeting link.

<https://meet.goto.com/salinaairport/salina-airport-authority-board-meeting>

Wednesday's meeting will feature discussion concerning the following 2022 Airport Authority operating plan priorities.

- Design, construction and funding for 2022 – 2024 FAA AIP grant funded projects:
 - Fuel farm design and construction
 - Runway 12/30 rehabilitation design and construction
 - Terminal building expansion design and construction
- FEMA grant funding for windstorm damage repair, replacement, and mitigation.
- Review of GeoProbe's expansion and construction plans at the company's Salina Airport Industrial Center site.
- In partnership with K-State Salina, support efforts to establish the Kansas Advanced Simulation Center at the Salina Regional Airport.

Please note the following agenda comments.

Agenda Item #5 – Review of Airport Activity and Financial Reports for the Month Ending September 30, 2022. (Rogers)

Airport Activity – Air Traffic (Rogers)

The Salina air traffic control tower (ATCT) recorded 7,352 operations during September 2022 which was a 2% increase as compared to the September 2021 total of 7,206. For the year-to-date, a total of 50,469 operations have occurred at the Salina Airport which is 17% less than the September 2021 YTD total of 60,741. Aircraft operations are back to expected levels following the completion of the Runway 17/35 resurfacing project.

Airport Activity – Fuel Flowage (Rogers)

The September 2022 fuel flowage came in at 434,725 gallons which was 154% more than the September 2021 total of 171,259 gallons. For the year-to-date, a total of 1,873,462 gallons have been delivered which is 20% more than the September 2021 YTD total of 1,565,572 gallons. The September 2022 increase is a result of the Jaded Thunder joint force training exercise. It is worth noting that, annually, military/government fuel sales account for 30% to 40% of total fuel delivered at SLN.

Airport Activity – Passenger Enplanements (Rogers)

During September 2022 SkyWest enplaned 1,116 passengers, which was a 41% decrease over the September 2021 total of 1,900 passengers. The September 2022 total passenger count was 2,271 which was a 40% decrease over the September 2021 total passenger count of 3,738. For the year-to-date, a total of 14,552 passengers have enplaned United Express flights which is 17% more than the September 2021 YTD total of 12,405 enplaned passengers. The September 2022 decrease in passenger enplanements reflects the continued negative impact of the routing and scheduling tag with Hays. An improved schedule effective January 16, 2023 has been published. The January 16 schedule change moves the SLN/ORD flight to an afternoon arrival and departure time that will enable SLN passengers to connect with 35 more flights and 34 more destinations than our current schedule.

Financial Reports – Comments and Notes (Swanson)

Highlights from the September 2022 financials include:

- Unrestricted cash in bank at \$1,706,215
 - SAA is carrying \$239,534 in 12-15-2021 storm damage repairs pending FEMA approval and 90% federal share reimbursement and 2.5% state.
- Total YTD income came in \$257,498 over the same period in 2021 (11.7%) and is tracking over (12%, \$267,891) the 2022 budget projections.
- Total operating expenses came in 6% over budget and are running 8% more than 2021 or \$169,750.
- Net operating income before depreciation equaled \$158,673 YTD at the end of September.

Please see the quarterly 10-year trend analysis included in the meeting packet.

The disbursements from the 2021-1 and 2022-1 GO Temporary Note project fund accounts during September are included as a separate report in the enclosed financial statements.

Financial Reports – Accounts Receivable Past Due 31 days or more as of October 17, 2022 (Swanson)

Account	Amount	Days	Comments
AGCO Corporation	\$5,087	31-90	Bldg. rent and finance charges
Hale, Max Alan	\$102	31-60	T-hangar rent
Kansas Military Board	\$3,217	31-90	Bldg. rent

Short-term Leasing Activity

Between September 8 and October 8, the SAA hosted the Jaded Thunder joint-force military training exercise and the US National Aerobatic Championships. The total economic impact for Salina was \$3.5 million and \$261,040 respectively for these events that brought over 1,000 visitors to our community this fall.

Agenda Item #6 – Update on the Status of FEMA Disaster Funding for Windstorm Damage Repair, Replacement and Mitigation. (Swanson and Cunningham)

At the meeting Shelli and Maynard will provide you with the latest details concerning FEMA's approval process for the SAA's seven (7) project funding packages.

Agenda Item #7 – K-State Salina, Aerospace and Technology Campus Growth and Development Update. (Rogers)

K-State Salina Dean and CEO, Dr. Alysia Starkey will attend the meeting to provide you with an update on growth and development plans for the Aerospace and Technology Campus. Dr. Starkey's update will include plans to establish the Kansas Advanced Simulation Center that will be in hangar H724 that is owned by the SAA. Plans for the revitalization of the Salina campus will be fueled by the October 5 announcement of the General Atomics Aeronautical Systems \$10,000,000 gift that will create the General Atomics Aerospace Innovation Ramp.

[October 5, 2022 News Release - K-State Salina receives largest corporate gift in university history from General Atomics](#)

Also on October 5, Senator Moran announced a \$4,750,000 National Institute of Science and Technology grant that provides initial funding for the Kansas Advanced Simulation Center.

Agenda Item #8 – SAA development review and approval of the 57,000 SF addition to the Geoprobe manufacturing facility located at 1840 Wall St., Salina Airport Industrial Center. (Cunningham)

Salina Airport Authority has received a request from Dominion, LLC, (Geoprobe) for Grantor's Site Development Review of their proposed 240' x 240' building expansion. Per the Kansas Warranty Deed site development covenant, the Salina Airport Authority Board of Directors must approve any site development and building construction plans for this property. The construction project includes an attached expansion of similar size and exterior design to the north end of the existing building. Enclosed is a letter and site plan submitted by DMA Architects for the construction project. The addition will match the existing building.

Recommendation: Approval of the development design plans for the construction of the 57,000 SF expansion to the north end of Geoprobe's manufacturing facility located at 1840 Wall St., Salina Airport Industrial Center.

Agenda Item #9 – Review and Update Current Salina Regional Airport Improvement Projects. (Rogers, Swanson, and Cunningham)

At the meeting, we will provide you with status reports on the following projects:

- SLN fuel farm construction design
- Hangar H626 rehabilitation design
- Runway 12/30 rehabilitation design
- M.J. Kennedy Air Terminal design and construction

Agenda Item #10 – Review and Update Current Salina Airport Industrial Center Improvement Projects. (Rogers, Swanson, and Cunningham)

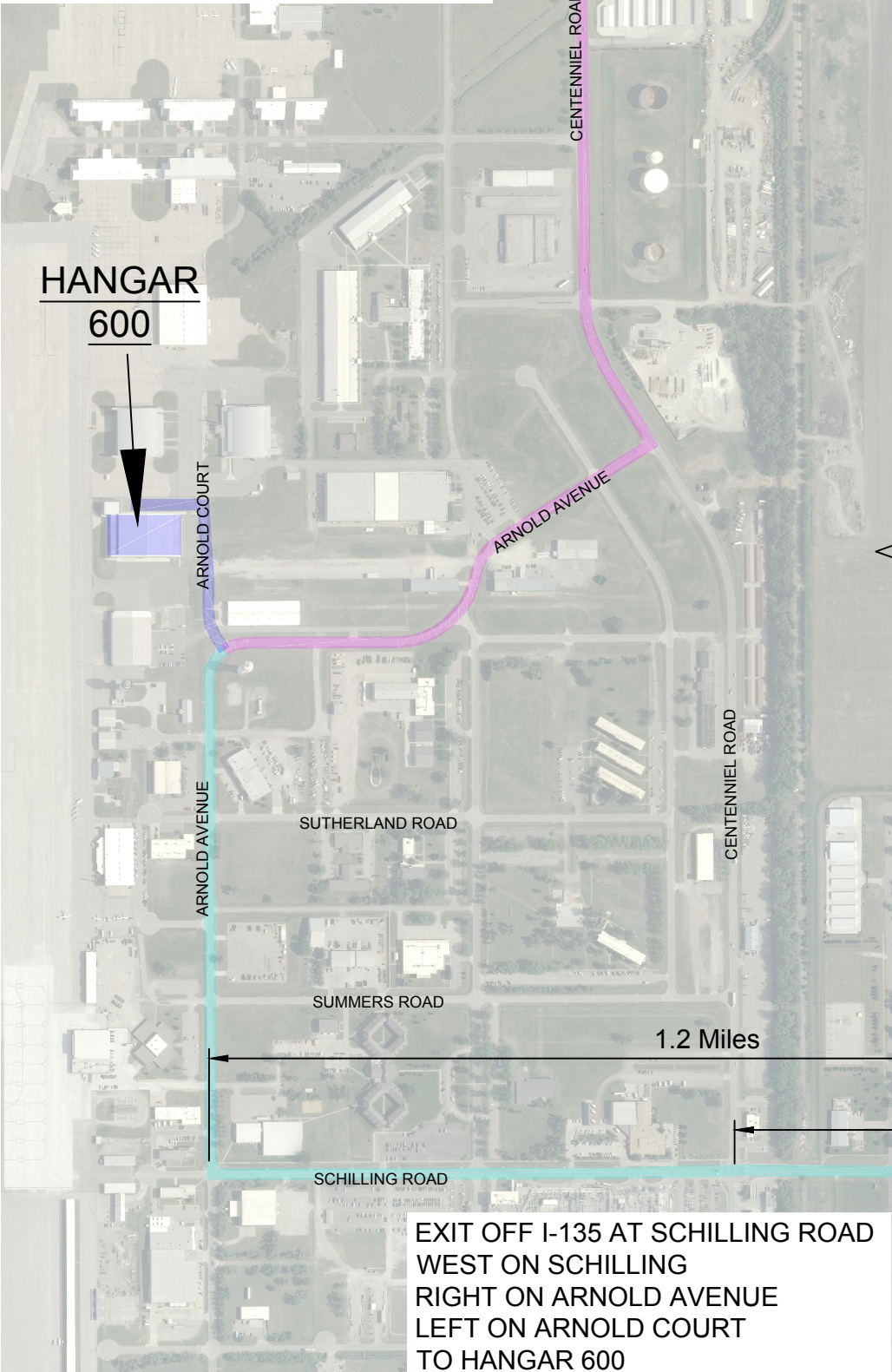
At the meeting, we will provide you with status reports on the following projects:

- Building B673 repairs or demolition assessment

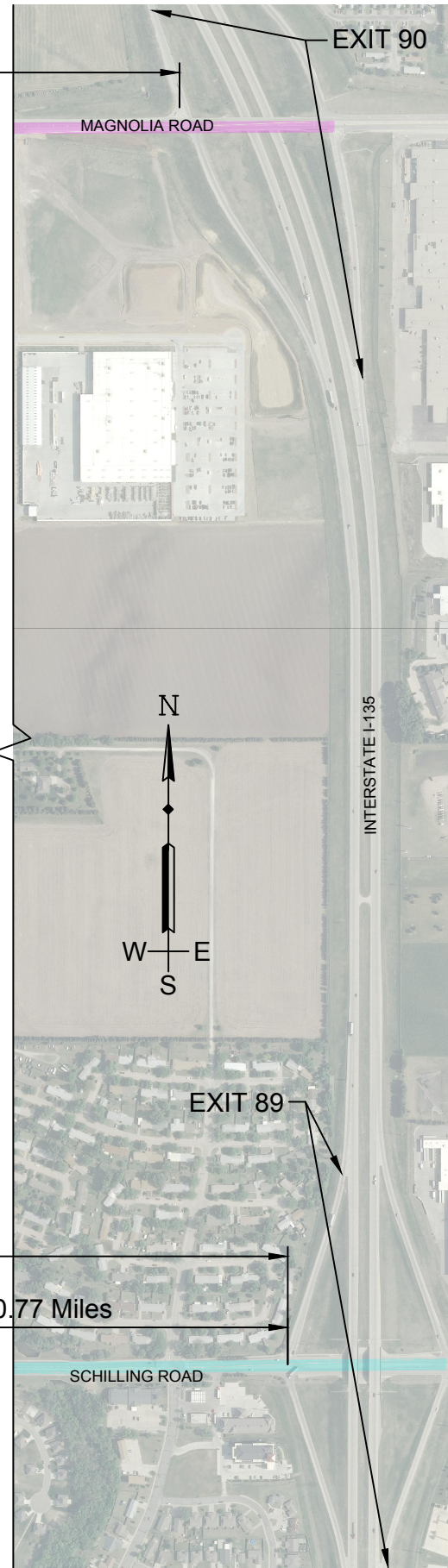
Please let me know if you have questions that you would like me to prepare for prior to the board meeting.

DIRECTIONS TO HANGAR 600 (2720 ARNOLD COURT)

EXIT OFF I-135 AT MAGNOLIA ROAD
WEST ON MAGNOLIA
LEFT ON CENTENNIAL
RIGHT ON ARNOLD AVENUE
RIGHT ON ARNOLD COURT
TO HANGAR 600



EXIT OFF I-135 AT SCHILLING ROAD
WEST ON SCHILLING
RIGHT ON ARNOLD AVENUE
LEFT ON ARNOLD COURT
TO HANGAR 600



DATE: October 14, 2022
TO: Tim Rogers, SAA Board of Directors
FROM: Maynard Cunningham
SUBJECT: **October 19, 2022, SAA Regular Board Meeting**

Facilities and Construction Notes

New Projects

- **H626 (Hangar Rehabilitation) –**
 - **Rehabilitation Design** - SAA, Hutton, and Architect One personnel conducted a design kick-off meeting for the Hangar 626 Rehabilitation project October 10, 2022. A site visit is planned to occur before the end of October.
 - **Boiler Room Demolition** - Bids have been requested from four contractors for demolition and removal of the boiler room equipment. After equipment and piping are removed, the room can then be utilized in the overall design of the aircraft hangar.
- **SLN Ramp** – SAA Maintenance personnel performed crack sealing on the south portion of the airfield ramp between Taxiway A and the terminal ramp during the week of October 10-14, 2022.

Current Projects

- **H959 (1 Vision Aviation) –**
 - Johnson Controls Inc. returned October 14, 2022, to continue diagnosing trouble alarms on the fire alarm control panel that were identified during the quarterly fire sprinkler system inspection in late July. 1 Vision personnel assisted in moving aircraft and parts to accommodate the telescoping boom lift to gain access to the communication cables, junction boxes and heat detectors mounted 70' above the hangar floor.
- **PH305 (SLN Fuel Facility) –**
 - **AIP-047** – SAA and Aviation personnel conducted the pre-design meeting with the FAA October 3, 2022. Kaw Valley Engineering conducted surveying and geotechnical activities October 5, and October 12, 2022, respectively.
 - Hoidale personnel arrived Thursday, September 22, 2022, to replace a fuel flow meter on tank #2. It was determined that additional fittings and gaskets necessary to complete the project would need to be ordered. Parts have been ordered awaiting delivery. Hoidale will return October 18, 2022, to complete the replacement project.
- **Runway 12/30 AIP-048** – SAA received Runway 12/30 design project initiation notification from the FAA September 9, 2022. SAA and Aviation personnel conducted a pre-design meeting with the FAA September 21, 2022. Following discussion from the meeting, SAA updated and submitted data and cost estimates for FAA planner's review.

- **B595 (Hentzen Coatings-Unit A, 1 Vision Aviation-Unit B) Renovation** - Building renovations were substantially completed October 1, 2022, and an inspection by the City of Salina Building Services and Salina Fire Marshal's office were conducted. A Temporary Certificate of Occupancy(TCO) was received October 4, 2022. Tenants in both the north and south units have started moving into their spaces, while contractors complete items during the next couple of weeks.



- **B120 Terminal Building** – Exterior cameras arrived and have been installed around the SLN Terminal Building. SAA personnel met with Nex-Tech personnel at the Terminal Building on July 29, 2022, to discuss exterior camera views. Nex-Tech proposed a plan to SAA personnel September 15, 2022, to relocate the exterior cameras to optimize viewing area.

Special Projects

- **December 15, 2021, Windstorm** - Multiple properties were damaged in the windstorm. Roofing, siding, and other mitigation repairs have been completed at multiple sites to protect from weather. Bids are still being solicited for repairs from the windstorm.
 - **D Hangars** – An estimate from a contractor for pre-storm condition repair costs was received by SAA. SAA personnel are uploading data to the FEMA portal as part of the process to determine possible funding.
 - **Multiple Locations** – SAA is coordinating with FEMA to determine available funding for debris removal, temporary and emergency protective measures, permanent repairs, and mitigation, etc. All the storm damages were separated into seven FEMA Projects. At this time, two of seven Projects have been completed and obligated for funds to SAA. Two more have been submitted to FEMA Consolidated Resources Center(CRC) for review. SAA personnel continue to upload data to the FEMA portal for the other three Projects.
 - **H606, B655(Stryten), H626(Schwann's)** – Cheney Construction has been selected from bids received to complete storm damage repair to the west interior wall of Hangar 606, the southwest exterior wall of Building 655, and the exterior siding of Hangar 626.
- **AIT and CTX Devices at SLN** - TSA approval has been received for AIT and CTX devices at the airport terminal building to improve passenger and bag screening. A TSA Site Survey Team was at SLN Monday, September 19, 2022, to review the location and accommodations prepared for the CTX device.

Completed Projects

- **H959 (1 Vision Aviation)** –
 - A water main break occurred Friday, September 9, 2022, north of Hangar 959. City of Salina Water Dept. personnel repaired the water main September 29, 2022. The City Street Dept backfilled the hole and poured concrete the following Wednesday, then returned to place asphalt and complete the project October 7, 2022.
- **H626 Boiler Room Demolition** – Associated Insulation, Manhattan, KS, completed the removal of asbestos containing insulation in the boiler room and in the pipe chase of Hangar 626 October 6, 2022.
- **H600(K-State) Roof Repairs** – Webcon Inc, completed repairs of the standing seam metal roof at Hangar 600 September 30, 2022. Upon review of the project, it was determined portions of the work completed were unsatisfactory. Webcon responded quickly to SAA's request and completed additional repairs October 6, 2022.

DATE: October 14, 2022

TO: Salina Airport Authority Board of Directors

FROM: Kasey L. Windhorst

SUBJECT: October Board Meeting Update

Employee Training

SAA hosted the Mobile Aircraft Firefighting Trainer MAFT on September 26-27, 2022. The MAFT is a unique 50-foot-long realistic aircraft mock-up that simulates fires in and on the aircraft via propane burners. A wide variety of scenarios are possible with the MAFT. Firefighters can make access over the wing, enter front and rear of aircraft and practice forcible entry, and use penetrating nozzles. The training is designed to move the responders through a simulated emergency to include initial response, firefighting operations, victim handling, IMS communications, aircraft shut down, battery disconnect, primary search, secondary search, securing for NTSB, vehicle operations and teamwork.

This training event allows SAA Maintenance, Operations and Aircraft Rescue and Fire Fighting (ARFF) personnel, Salina Fire Department (SFD) and rural fire districts to comply with the annual live fire burn and complete the required Part 139 training. Security Alliance/Beech Fire Department out of Wichita sent twenty fire fighters to participate in this year's event at SLN.



Airfield Tenant Coordination Meeting

SAA staff will meet with airfield tenants to conduct the quarterly airfield tenant coordination meeting. The meeting is scheduled for Wednesday, October 26th at 9:00 a.m. at Hangar 600, Room 100. Items to be discussed include 2022/2023 winter operations, airfield construction updates, airfield operations, safety concerns and tenant updates.

Upcoming Events

Kansas State University Salina campus is hosting the upcoming 2022 National Intercollegiate Flying Association (NIFA) SAFECON flight competition. SAFECON is the premier collegiate flight competition with over one hundred competitors from more than six schools. Young pilots from across the region will compete for awards in a variety of aviation skills including landing, navigation, preflight, flight planning, crew-based simulations, safety, sportsmanship and more. The event will take place at Salina Regional Airport, Hangar 600 from October 17 – October 22.

Announcements

As a reminder, the following special and regular board meetings are scheduled for the remainder of CY 2022. All board meetings will be held at Hangar H600, Room 100.

Wednesday, October 19, 2022, 8:00 a.m.

Wednesday, November 2, 2022, 4:00 p.m.

Wednesday, November 16, 2022, 8:00 a.m.

Wednesday, December 21, 2022, 8:00 a.m.

Regular Board Meeting

Special Board Meeting

Regular Board Meeting

Regular Board Meeting

SALINA AIRPORT AUTHORITY REGULAR BOARD MEETING
Hangar H600, First Floor Conference Room
2720 Arnold Court

October 19, 2022 – 8:00 AM

AGENDA

Call to Order: (Buer)

1. Call to order, determine that a quorum is present and confirm that the meeting notice has been published. (Buer)
2. Recognition of guests. (Buer)
3. Additions to the agenda and agenda overview. (Rogers)
4. Approval of the minutes of the September 21, 2022, regular board meeting. (Buer)
5. Review of airport activity and financial reports for the month ending September 30, 2022. (Rogers and Swanson)
6. Update on the status of FEMA funding for disaster recovery and mitigation assistance following the December 15, 2021, windstorm. (Swanson and Cunningham)
7. K-State Salina, Aerospace and Technology Campus growth update and discussion (Rogers)
8. SAA development review and approval of the 57,600 SF addition to the Geoprobe manufacturing facility located at 1840 Wall St., Salina Airport Industrial Center. (Cunningham)
9. Review and update current Salina Regional Airport improvement projects. (Rogers, Swanson, and Cunningham)
10. Review and update current Salina Airport Industrial Center improvement projects. (Rogers, Swanson, and Cunningham)

Directors' Forum: (Buer)

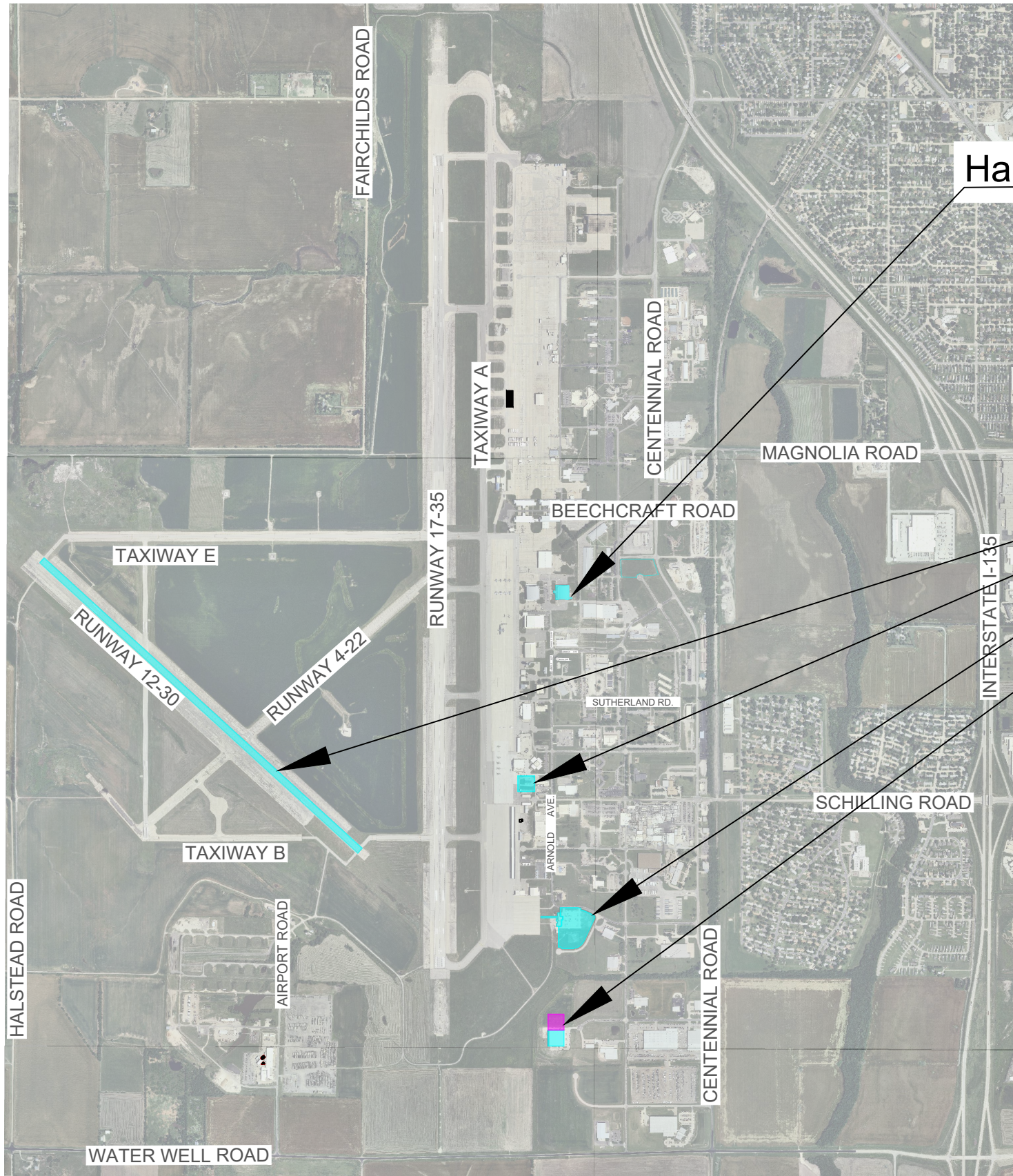
Visitor's Questions and Comments: (Buer)

Staff Reports: (Rogers)

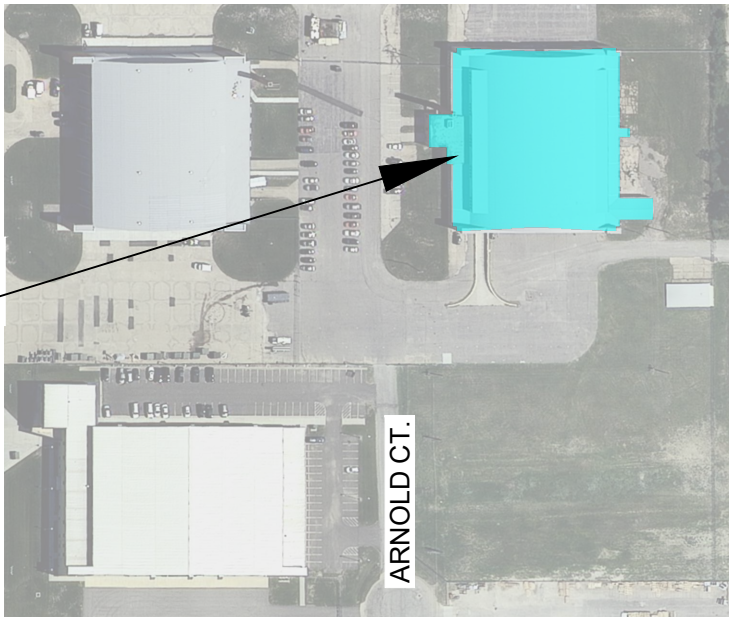
Announcements: (Windhorst)

Adjournment: (Buer)



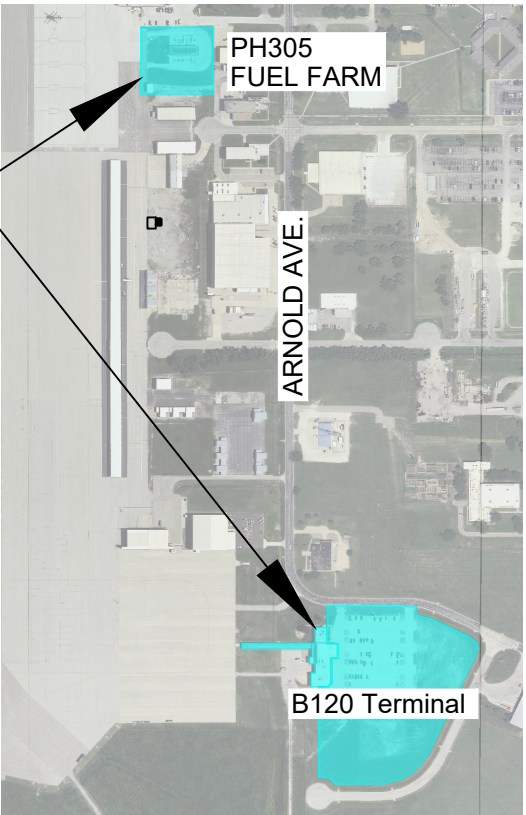
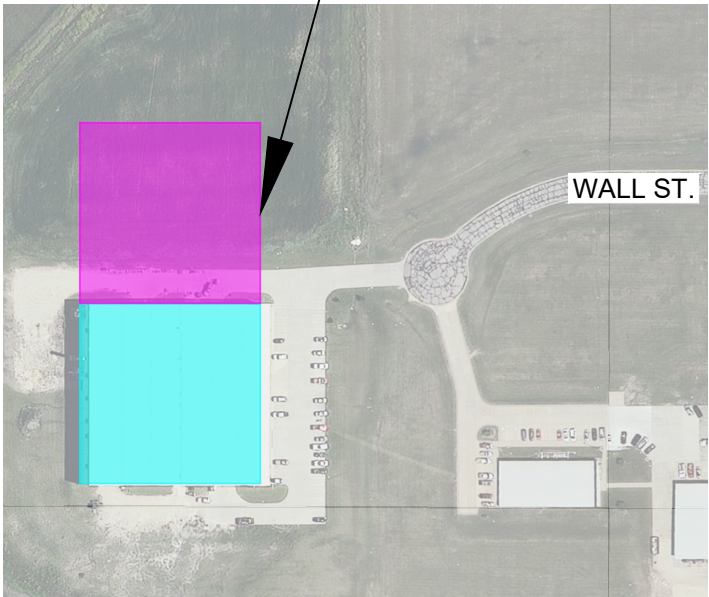


Hangar 626



Salina Regional Airport
Improvement Projects

GeoProbe
1840 Wall St.



Drawing Number 3100-10-22



3237 ARNOLD, SALINA, KS 67401
(785-827-3914 FAX: 785-827-2221)

None : REVISIONS

MWC : DESIGNED BY

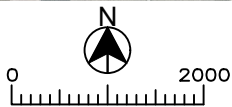
MWC : DRAWN BY

1" = 2000' : SCALE

10/17/22, 8:35 : DATE

SALINA AIRPORT AUTHORITY
October 2022 Board Meeting Location Map

1
OF
1



**MINUTES OF THE REGULAR MEETING OF THE BOARD
OF DIRECTORS OF THE SALINA AIRPORT AUTHORITY
SEPTEMBER 21, 2022
AIRCRAFT RESCUE AND FIREFIGHTING (ARFF) STATION,
2040 BEECHCRAFT ROAD, SALINA, KANSAS**

Call to Order

The meeting was called to order at 8:00 A.M. by Chair Kent Buer. Chair Buer confirmed that a quorum was present. Business and Communications Manager Kasey Windhorst stated that the meeting notice was published Friday, September 16, 2022, and the board packet published and distributed on Monday, September 19, 2022.

Attendance

Attendance was taken. Chair Buer, Directors Roberg, Gunn, Carlin, and Eichelberger (via telephone call conference bridge) were present. Executive Director Tim Rogers; Director of Administration and Finance Shelli Swanson; Director of Facilities and Construction Maynard Cunningham; Business and Communications Manager Kasey Windhorst; Administration Specialist Michelle Moon; and Attorney Greg Bengtson attended. Mitch Robinson, Salina Community Economic Development Organization, and Patrick Parker, Ashby House, were guests in attendance.

Parker presented an overview of Ashby House services and upcoming events. Ashby House has unique funding issues because it is neither fully a housing service nor a treatment facility. A large part of the services at Ashby House build on facilitating clients networking with business members and assisting with client job placement. Parker reached out to the Salina Airport Authority specifically for client employment opportunities.

Additions to the Agenda

Chair Buer asked if there were any additions to the agenda. Executive Director Rogers stated a tour of the fire station is added to the agenda. Rogers then provided an overview of the agenda items.

Minutes

Chair Buer asked if the board members had additions or corrections to the minutes. Director Gunn moved to approve the minutes of the August 17, 2022 regular board meeting, August 31, 2022 special board meeting and the September 14, 2022 special board meeting; Director Carlin seconded the motion. Motion carried 5-0.

Airport Activity

Executive Director Rogers reviewed the airport activity during the month of August 2022. The Salina air traffic control tower (ATCT) recorded 4,040 operations during August 2022 which was a 35% decrease as compared to the August 2021 total of 6,181. The year-to-date total of 43,117 operations is a 19% decrease from August 2021 year-to-date total of 53,535. August 2022 fuel flowage came in at 103,932 gallons which was 54% less than the August 2021 total of 226,367 gallons. The decrease in air traffic and fuel flowage is a result of the Runway 17/35 closure for construction. SkyWest enplaned 1,109 passengers during August 2022, which was a 40% decrease from the August 2021 total of 1,859 passengers. Total passenger count was 2,277 which was a 31% decrease from the August 2021 year-to-date total of 3,888. The decrease in passenger enplanement

reflects the negative impact of the routing and scheduling tag with Hays. The implementation of a new “optimized” SLN schedule that breaks the HYS tag has slipped to later this year and possibly early 2023.

Financial Reports

Director of Administration and Finance Swanson reviewed the financials ending August 31, 2022. Unrestricted cash in the bank is at \$1,860,521. Total year-to-date income came in \$157,216 over the same period in 2021 (8%) and is tracking 8% over the 2022 budget projections of \$153,955. Total operating expenses came in \$3,858 under budget, running 2.27% more than 2021 or \$42,493. Net operating income before depreciation equaled \$177,297 year-to-date at the end of August. The airport authority remitted the 2nd and final 2022 bond payment to the State Treasurer’s office in the amount of \$1,952,940 (\$1,670,000 principal; \$282,940 interest). Swanson reviewed the significant expenditures and commented on disbursements from bond funds. Swanson updated the board on the status of the FEMA projects. Swanson anticipates the funds to be obligated by the end of 2022.

Consideration of an architectural and engineering agreement with Hutton Corporation for the design of the hangar H626 rehabilitation project

Executive Director Rogers reviewed the project and scope of work for the design of H626 rehabilitation project. After discussing the terms of the contract, Director Carlin moved that the board approve the proposed Hutton Corporation architectural agreement in the amount of \$246,000 for the H626 rehabilitation project, to include the construction observation, administration and full construction documents, and authorize the executive director to sign the agreement. Director Roberg seconded the motion. Motion carried 5 - 0.

Consideration of a Lease Agreement with Flotation Technology, LLC for Unit A in the Salina Development Center, 2775 Arnold Ave., Saina Airport Industrial Center

Executive Director Rogers provided the overview of Flotation Technology and discussed the proposed lease terms as follows:

Salina Development Center, 2775 Arnold Ave., Unit A

- Flotation Technology, LLC
 - 5,350 SF
 - Five (5) years effective October 1, 2022, with options for one (1) additional term of one (1) year
 - Biennial CPI adjustments
 - \$2,565 per month
 - \$30,780 per year
 - \$5.75 per SF per year

Director Gunn moved that the board approve the proposed Unit A, Salina Development Center lease with Flotation Technologies, LLC and authorize Chair Buer to sign the lease agreement. Director Eichelberger seconded the motion. The motion carried 5 – 0.

Consideration of a Lease Agreement with Hentzen Coatings, Inc. for Unit A of Building B595, 2761 Berschel, Saina Airport Industrial Center

Director of Administration and Finance Swanson commented on the lease agreement with Hentzen Coatings and reviewed the proposed lease terms:

Building B595, 2761 Berschel, Unit A

- Hentzen Coatings, Inc.
 - 9,175 SF
 - One (1) year effective October 1, 2022, with options for four (4) additional terms of one (1) year each
 - Biennial CPI adjustments
 - \$4,100 per month
 - \$49,200 per year
 - \$5.35 per SF per year

Director Carlin moved that the board approve the proposed Unit A, Building B595 Lease Agreement with Hentzen Coatings, Inc., and authorize Chair Buer to sign the lease agreement. Director Gunn seconded the motion. The motion carried 5 – 0.

Review of the SAA's 2022 Year-to-Date Building and Hangar Leasing Activity and Review of the SAA's 2023 Leasing Plan

Executive Director Rogers reviewed the updated scorecard. The benchmark was set at 42% unleased occupancy in April 2014 following Beechcraft's termination of their lease. As of November 1, 2022, the unleased occupancy rate is 11%. Rogers reviewed the 2023 building and leasing plan. The priority will be to secure long-term tenants for hangars H509, H600 and H626. Together the three hangars have a potential new lease revenue greater than \$900,000.

Staff Reports

Executive Director Rogers provided a damage report from the storm on Saturday, August 17, 2022. One building sustained damage. Building B673 has been vacant for several years and was in poor condition prior to the storm.

Announcements

The next regular board meeting scheduled for October 19, 2022 will be held at Hangar H600 board meeting room.

The International Aerobatic Club will be leasing H606 for the U.S. National Aerobatic Championships from October 2, 2022 to October 7, 2022.

Airport Fire Station Tour

Executive Director Rogers hosted a tour of the airport fire station's facilities and equipment.

Upon a motion duly made, the meeting adjourned at 10:05 A.M.

Minutes approved at the October 19, 2022, board meeting.

Alan Eichelberger, Secretary

(SEAL)

SALINA AIRPORT AUTHORITY
AIRPORT ACTIVITY REPORT
2022

AIR TRAFFIC/ATCT

September, 2022	7,352 Operations 756 Instrument Operations 385 Peak Day
September, 2021	7,206 Operations 408 Instrument Operations 4408 Peak Day
January 2022 - September 2022	50,469 Operations
January 2021 - September 2021	60,741 Operations
January 2020 - September 2020	42,569 Operations

FUEL FLOWAGE

September, 2022	434,725 Gallons
September, 2021	171,259 Gallons
January 2022 - September 2022	1,873,462 Gallons
January 2021 - September 2021	1,565,572 Gallons
January 2020 - September 2020	1,801,166 Gallons

		Avflight	
		Military/Gov't	Self-fuel
KSU-S	Avflight Salina	Portion	Station Portion
15,022	419,703	313,413	300
13,409	157,850	27,722	548
95,843	1,777,619	726,043	3,117
97,410	1,468,162	331,348	4,113
63,732	1,737,434	773,824	2,443

SkyWest Airlines

ENPLANEMENTS

DEPLANEMENTS

TOTAL

September, 2022	1,116 Passengers	1155 Passengers	2,271
September, 2021	1,900 Passengers	1,838 Passengers	3,738
January 2022 - September 2022	14,552 Passengers		
January 2021 - September 2021	12,405 Passengers		
January 2020 - September 2020	6,023 Passengers		

ENPLANEMENTS - Charter Flights

September, 2022	370 Passengers
September, 2021	150 Passengers
January 2022 - September 2022	2,568 Passengers
January 2021 - September 2021	1,012 Passengers
January 2020 - September 2020	5,288 Passengers

TOTAL ENPLANEMENTS - Scheduled Flights & Charter Flights

September, 2022	1,486 Passengers
September, 2021	2,050 Passengers
January 2022 - September 2022	17,120 Passengers
January 2021 - September 2021	13,417 Passengers
January 2020 - September 2020	11,311 Passengers

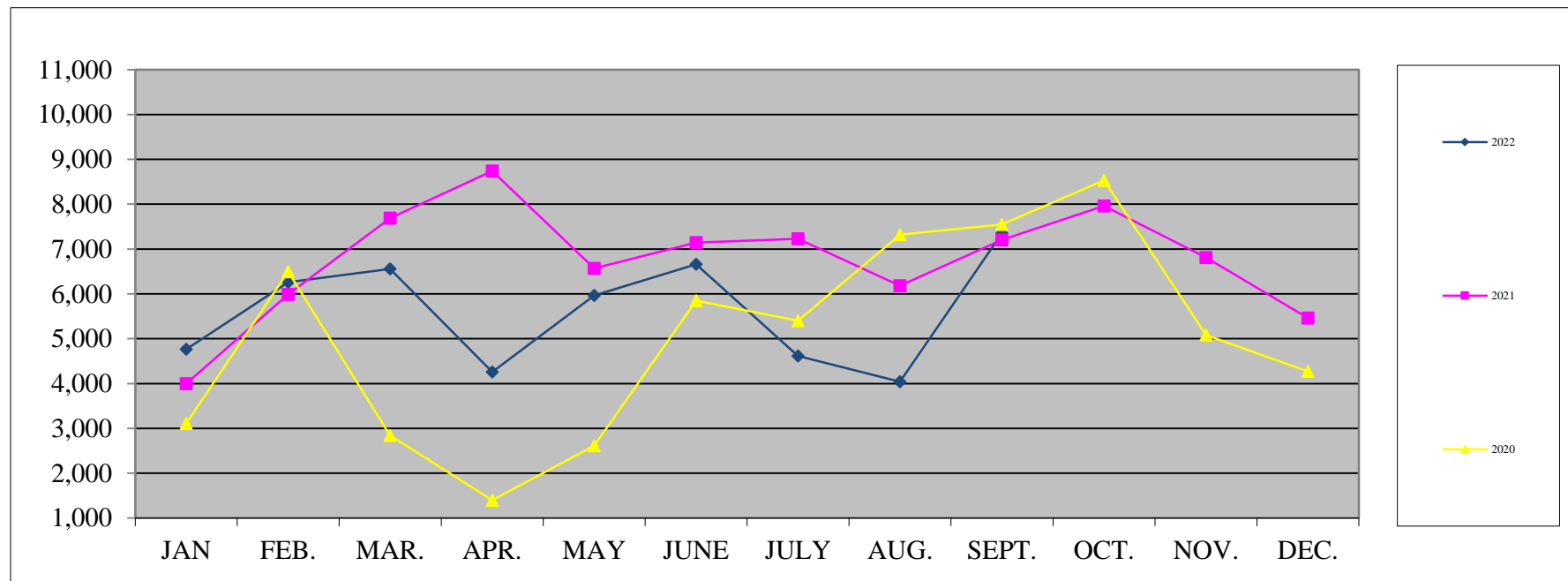
AIRPORT TRAFFIC RECORD

2021 - 2022

	ITINERANT					LOCAL			
	AC	AT	GA	MI	Total Itinerant	Civil	Military	Total Local	Total Operations
2022									
January, 22	124	1,618	610	156	2,508	2,062	194	2,256	4,764
February, 22	128	2,269	680	151	3,228	2,974	58	3,032	6,260
March, 22	131	2,009	722	329	3,191	3,188	178	3,366	6,557
April, 22	176	1,876	616	151	2,819	1,381	58	1,439	4,258
May, 22	186	1,617	711	176	2,690	3,093	182	3,275	5,965
June, 22	178	1,782	749	450	3,159	3,209	292	3,501	6,660
July, 22	148	1,508	773	88	2,517	2,040	56	2,096	4,613
August, 22	122	1,392	644	168	2,326	1,630	84	1,714	4,040
September, 22	140	2,305	1,058	673	4,176	2,912	264	3,176	7,352
October, 22									
November, 22									
December, 22									
Totals January - September	1,333	16,376	6,563	2,342	26,614	22,489	1,366	23,855	50,469
2021									
January, 21	131	1,074	540	161	1,906	1,968	122	2,090	3,996
February, 21	109	1,966	533	218	2,826	2,863	300	3,163	5,989
March, 21	113	2,286	743	340	3,482	3,804	402	4,206	7,688
April, 21	120	2,534	743	196	3,593	4,966	180	5,146	8,739
May, 21	132	1,767	847	272	3,018	3,274	278	3,552	6,570
June, 21	141	2,327	876	154	3,498	3,522	122	3,644	7,142
July, 21	129	2,063	845	189	3,226	3,874	130	4,004	7,230
August, 21	132	1,694	898	193	2,917	3,120	144	3,264	6,181
September, 21	130	2,528	1,859	164	4,681	2,467	58	2,525	7,206
October, 21									
November, 21									
December, 21									
Totals January - September	1,137	18,239	7,884	1,887	29,147	29,858	1,736	31,594	60,741
Difference	196	-1,863	-1,321	455	-2,533	-7,369	-370	-7,739	-10,272
YTD % Change	17%	-10%	-17%	24%	-9%	-25%	-21%	-24%	-17%
Legend:	AC: Air Carrier		AT: Air Taxi						
	GA: General Aviation		MI: Military						

AIR TRAFFIC

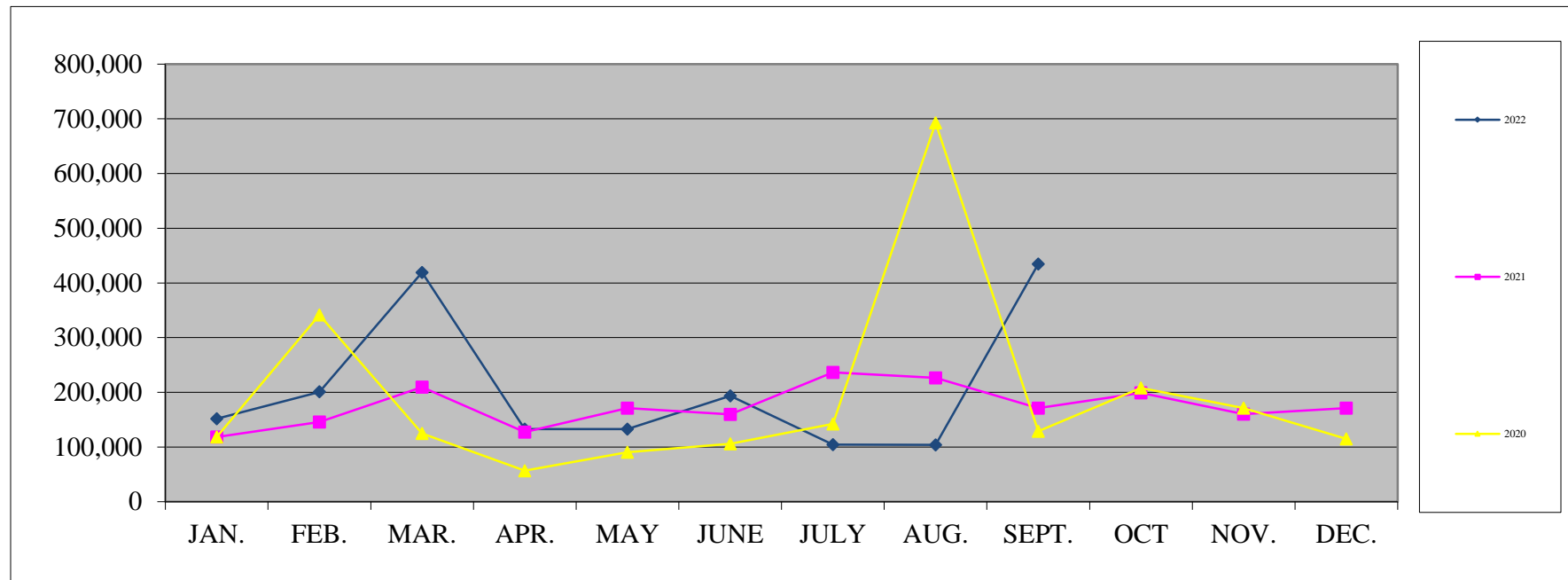
	<u>JAN</u>	<u>FEB.</u>	<u>MAR.</u>	<u>APR.</u>	<u>MAY</u>	<u>JUNE</u>	<u>JULY</u>	<u>AUG.</u>	<u>SEPT.</u>	<u>OCT.</u>	<u>NOV.</u>	<u>DEC.</u>	<u>TOTAL</u>
2022	4,764	6,260	6,557	4,258	5,965	6,660	4,613	4,040	7,352				50,469
2021	3,996	5,989	7,688	8,739	6,570	7,142	7,230	6,181	7,206	7,958	6,808	5,463	80,970
2020	3,109	6,494	2,841	1,398	2,614	5,846	5,399	7,318	7,550	8,532	5,078	4,269	60,448
2019	3,102	4,852	6,848	8,225	6,328	8,541	8,051	5,520	7,187	7,240	6,072	4,587	76,553
2018	3,418	4,601	6,312	5,510	5,094	6,865	6,865	4,910	6,336	9,974	5,317	4,091	69,293
2017	3,539	6,598	5,329	5,340	4,253	4,338	3,613	4,717	7,081	6,177	6,062	4,094	61,141
2016	4,422	7,789	7,962	7,312	6,898	8,011	5,877	4,789	7,593	6,052	5,458	4,948	77,111
2015	6,918	7,133	8,557	8,870	8,022	7,268	8,089	5,426	8,846	11,367	8,753	7,101	96,350
2014	6,511	6,887	7,143	8,426	8,365	7,234	7,423	5,756	9,035	10,496	8,316	5,509	91,101
2013	5,341	7,146	7,440	7,349	7,336	8,291	6,696	6,694	8,755	10,136	7,946	7,001	90,131
2012	4,642	6,700	8,189	8,002	11,819	7,532	7,635	7,802	10,478	10,292	8,838	5,409	97,338



FUEL FLOWAGE

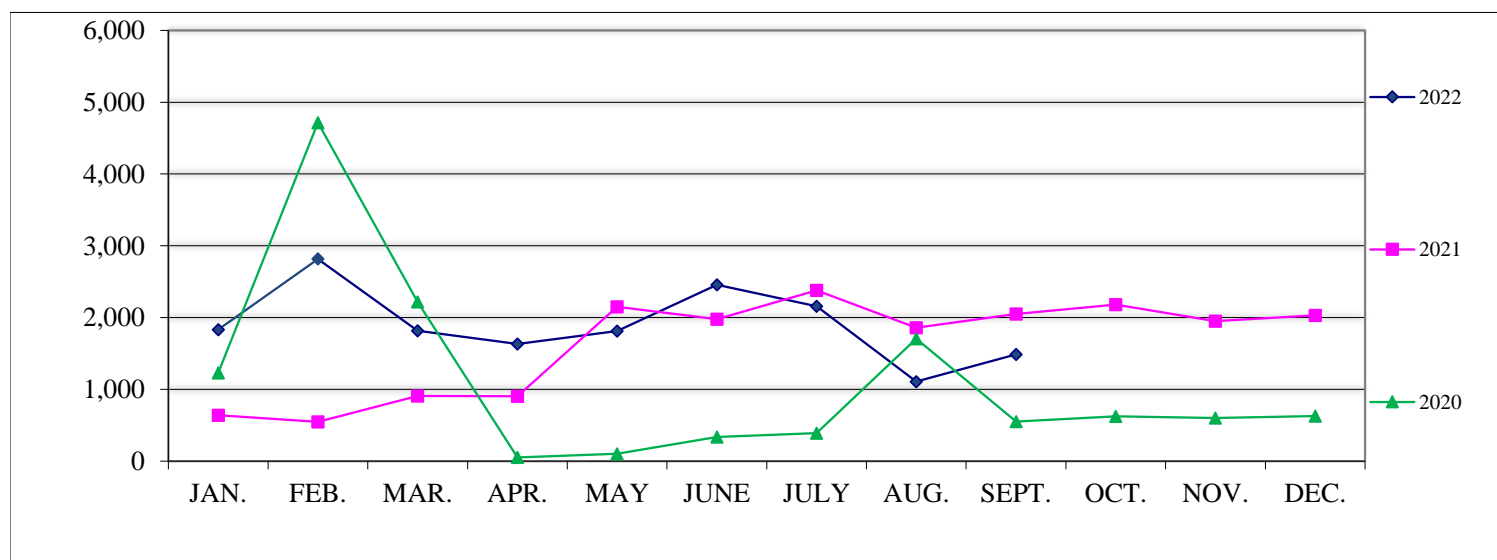
Gallons of Fuel Sold at SLN

	<u>JAN.</u>	<u>FEB.</u>	<u>MAR.</u>	<u>APR.</u>	<u>MAY</u>	<u>JUNE</u>	<u>JULY</u>	<u>AUG.</u>	<u>SEPT.</u>	<u>OCT</u>	<u>NOV.</u>	<u>DEC.</u>	<u>TOTAL</u>
2022	151,697	200,550	418,947	132,791	132,881	193,611	104,328	103,932	434,725				1,873,462
2021	118,269	145,726	209,376	127,107	171,289	159,725	236,452	226,367	171,259	199,197	160,279	171,150	2,096,198
2020	118,337	341,329	124,865	56,765	90,326	105,987	142,234	692,613	128,710	208,081	170,893	114,869	2,295,009
2019	156,531	183,334	150,881	119,745	172,835	157,376	111,147	645,834	161,888	223,382	108,525	87,182	2,278,659
2018	74,807	186,507	172,561	154,513	131,941	367,663	288,977	303,273	348,454	161,563	125,129	99,437	2,414,825
2017	115,075	588,072	203,387	149,134	143,801	211,351	160,134	126,751	418,616	172,614	200,050	133,173	2,622,158
2016	80,221	136,763	130,990	94,673	153,410	132,964	208,846	375,330	137,906	126,983	100,764	182,062	1,860,912
2015	176,746	188,406	290,470	132,543	128,100	126,428	237,782	108,581	143,816	717,601	147,853	89,277	2,487,603
2014	115,573	135,651	112,694	95,549	110,387	282,468	103,108	83,757	91,423	652,207	90,948	97,295	1,971,061
2013	139,227	165,167	138,056	121,295	120,083	282,743	134,677	137,840	126,523	134,024	151,427	106,917	1,757,981
2012	136,995	163,253	303,472	142,770	307,541	365,938	162,584	169,534	163,515	149,404	287,619	241,424	2,594,049



ENPLANEMENTS

	<u>JAN.</u>	<u>FEB.</u>	<u>MAR.</u>	<u>APR.</u>	<u>MAY</u>	<u>JUNE</u>	<u>JULY</u>	<u>AUG.</u>	<u>SEPT.</u>	<u>OCT.</u>	<u>NOV.</u>	<u>DEC.</u>	<u>TOTAL</u>
2022	1,833	2,815	1,815	1,634	1,813	2,458	2,157	1,109	1,486				17,120
2021	638	548	909	904	2,151	1,979	2,379	1,859	2,050	2,182	1,949	2,032	19,580
2020	1,232	4,716	2,219	52	105	338	392	1,705	552	624	602	628	13,165
2019	996	1,659	1,698	1,548	1,865	1,727	2,065	2,556	1,540	1,958	1,703	1,874	21,189
2018	414	715	370	783	1,387	1,751	1,623	5,553	2,095	2,230	1,756	1,622	20,299
2017	720	1,344	731	756	761	852	793	746	3,874	946	1,229	1,207	13,959
2016	36	0	0	0	0	104	372	910	637	558	574	692	3,883
2015	528	107	4,550	531	122	88	77	79	61	3,574	592	80	10,389
2014	145	109	140	135	175	403	282	223	178	431	157	178	2,556
2013	166	191	205	214	243	218	202	205	161	178	212	243	2,438
2012	237	249	247	216	287	213	174	198	151	187	229	335	2,723



****Adjustment based on Nonscheduled/On-Demand Air Carrier Filings FAA Form 1800-31**

***SALINA** Airport*

Authority

SEPTEMBER 2022

FINANCIAL STATEMENTS

Salina Airport Authority
Statement of Net Position Prev Year Comparison
As of September 30, 2022

10/16/2022

	Sep 30, 22	Aug 31, 22	\$ Change	Sep 30, 21	\$ Change	% Change
ASSETS						
Current Assets						
Checking/Savings						
Cash in Bank-Bond Funds	2,064,516	2,346,909	-282,393	51,623	2,012,893	3,899%
Cash in bank-Operating Funds	1,706,215	1,861,485	-155,270	1,463,297	242,918	17%
Cash in Bank - Mill Levy	728,642	588,296	140,346	768,231	-39,589	-5%
Total Checking/Savings	4,499,373	4,796,690	-297,317	2,283,151	2,216,222	97%
Accounts Receivable						
Accounts Receivable	238,422	45,052	193,370	246,457	-8,035	-3%
Total Accounts Receivable	238,422	45,052	193,370	246,457	-8,035	-3%
Other Current Assets						
Agri Land Receivable	0	66,760	-66,760	0	0	0%
Mill Levy receivable	52,429	281,658	-229,229	14,395	38,034	264%
Other current assets	2,994,571	149,493	2,845,078	146,383	2,848,188	1,946%
Undeposited Funds	2,485	12,653	-10,168	27,875	-25,390	-91%
Total Other Current Assets	3,049,485	510,564	2,538,921	188,653	2,860,832	1,516%
Total Current Assets	7,787,280	5,352,306	2,434,974	2,718,261	5,069,019	186%
Fixed Assets						
Fixed assets at cost	100,203,268	96,486,986	3,716,282	94,674,859	5,528,409	6%
Less accumulated depreciation	-52,181,013	-51,938,926	-242,087	-52,580,364	399,351	1%
Total Fixed Assets	48,022,255	44,548,060	3,474,195	42,094,495	5,927,760	14%
Other Assets						
Deferred Outflow of Resources	1,085,654	1,085,654	0	1,232,712	-147,058	-12%
Total Other Assets	1,085,654	1,085,654	0	1,232,712	-147,058	-12%
TOTAL ASSETS	56,895,189	50,986,020	5,909,169	46,045,468	10,849,721	24%
LIABILITIES & EQUITY						
Liabilities						
Current Liabilities						
Accounts Payable						
Accounts payable	3,593,644	332,582	3,261,062	350,975	3,242,669	924%
Total Accounts Payable	3,593,644	332,582	3,261,062	350,975	3,242,669	924%
Credit Cards						
Total Credit Cards	2,118	2,598	-480	-1,142	3,260	285%
Other Current Liabilities						
Accrued debt interest payable	39,008	-8,036	47,044	63,384	-24,376	-38%
Debt, current portion	1,710,800	1,710,800	0	1,670,000	40,800	2%
Deferred Agri Land Revenue	0	22,253	-22,253	0	0	0%
Deferred Mill Levy revenue	614,014	818,685	-204,671	633,667	-19,653	-3%
Other current liabilities	295,510	285,387	10,123	270,978	24,532	9%
Total Other Current Liabilities	2,659,332	2,829,089	-169,757	2,638,029	21,303	1%
Total Current Liabilities	6,255,094	3,164,269	3,090,825	2,987,862	3,267,232	109%
Long Term Liabilities						
Debt - Long Term	24,927,207	24,927,207	0	22,100,188	2,827,019	13%
Deferred Inflows of Resources	229,504	229,504	0	66,426	163,078	246%
Less current portion	-1,710,800	-1,710,800	0	-1,670,000	-40,800	-2%
Net OPEB Liability (KPERS)	13,911	13,911	0	13,924	-13	-0%
Net Pension Liability	509,789	509,789	0	715,670	-205,881	-29%
Security Deposits Returnable	94,339	94,339	0	92,501	1,838	2%
Total Long Term Liabilities	24,063,950	24,063,950	0	21,318,709	2,745,241	13%
Total Liabilities	30,319,044	27,228,219	3,090,825	24,306,571	6,012,473	25%
Equity						
Invested in Capital Assets net	23,095,048	19,436,939	3,658,109	19,908,731	3,186,317	16%
Net assets, Designated	90,000	90,000	0	90,000	0	0%
Net assets, Unrestricted	-350,417	3,307,692	-3,658,109	1,198,452	-1,548,869	-129%
Net Income	3,741,514	923,170	2,818,344	541,714	3,199,800	591%
Total Equity	26,576,145	23,757,801	2,818,344	21,738,897	4,837,248	22%
TOTAL LIABILITIES & EQUITY	56,895,189	50,986,020	5,909,169	46,045,468	10,849,721	24%

Salina Airport Authority
Profit & Loss Budget Performance
September 2022

8:53 PM
10/16/2022
Accrual Basis

	Sep 22	Jan - Sep 22	YTD Budget	\$ Over Budget	% of Budget	Annual Budget
Ordinary Income/Expense						
Income						
Airfield revenue						
Fuel Flowage Fees	38,292	168,456	135,000	33,456	125%	180,000
Hangar rent	127,990	759,271	611,250	148,021	124%	815,000
Landing fees	3,316	32,558	22,838	9,720	143%	30,450
Ramp rent	5,542	50,122	48,750	1,372	103%	65,000
Total Airfield revenue	175,140	1,010,407	817,838	192,569	124%	1,090,450
Building and land rent						
Agri land rent	24,113	69,120	50,250	18,870	138%	67,000
Building rents - Long Term						
Short-term leasing	39,954	348,491	399,338	-50,847	87%	532,450
Building rents - Long Term - Other	77,439	695,886	613,163	82,723	113%	817,550
Total Building rents - Long Term	117,393	1,044,377	1,012,501	31,876	103%	1,350,000
Land rent						
Basic Land Rent	10,552	117,311	121,930	-4,619	96%	162,573
Property tax - tenant share	8,952	80,570	80,570	0	100%	107,427
Total Land rent	19,504	197,881	202,500	-4,619	98%	270,000
Tank rent	1,220	10,980	10,530	450	104%	14,040
Total Building and land rent	162,230	1,322,358	1,275,781	46,577	104%	1,701,040
Other revenue						
Airport Marketing	0	20,000	18,750	1,250	107%	25,000
ARFF Training	5,610	5,610	0	5,610	100%	0
Commissions	1,973	18,930	14,250	4,680	133%	19,000
Other income	11,623	72,705	55,500	17,205	131%	74,000
Total Other revenue	19,206	117,245	88,500	28,745	132%	118,000
Total Income	356,576	2,450,010	2,182,119	267,891	112%	2,909,490
Gross Income	356,576	2,450,010	2,182,119	267,891	112%	2,909,490
Expense						
Administrative expenses						
A/E, consultants, brokers	40,000	75,319	25,500	49,819	295%	34,000
Airport promotion	22,546	188,738	183,750	4,988	103%	245,000
Bad Debt Expense	0	0	3,750	-3,750	0%	5,000
Computer/Network Admin.	2,275	27,882	21,375	6,507	130%	28,500
Dues and subscriptions	2,351	24,436	20,625	3,811	118%	27,500
Employee retirement	10,083	67,175	60,066	7,109	112%	80,088
FICA and medicare tax expense	7,653	54,730	50,368	4,362	109%	67,157
Industrial development	4,792	43,125	45,000	-1,875	96%	60,000
Insurance , property	19,217	173,465	172,500	965	101%	230,000
Insurance, medical	16,334	146,646	165,000	-18,354	89%	220,000
Kansas unemployment tax	254	715	750	-35	95%	1,000
Legal and accounting	2,498	49,669	34,425	15,244	144%	45,900
Office salaries	79,131	445,389	412,500	32,889	108%	550,000
Office Supplies	1,576	9,137	6,116	3,021	149%	8,155
Other administrative expense	1,861	10,270	13,500	-3,230	76%	18,000
Postage	0	1,077	1,530	-453	70%	2,040
Property tax expense	12,047	108,424	108,424	0	100%	144,565
Special Events	419	1,423	1,125	298	126%	1,500
Telephone	1,163	14,497	18,750	-4,253	77%	25,000
Training	1,158	7,148	7,500	-352	95%	10,000
Travel and meetings	354	12,579	7,500	5,079	168%	10,000
Total Administrative expenses	225,712	1,461,844	1,360,054	101,790	107%	1,813,405

	Sep 22	Jan - Sep 22	YTD Budget	\$ Over Budget	% of Budget	Annual Budget
Maintenance expenses						
Airfield maintenance	17,287	47,416	37,500	9,916	126%	50,000
Airport Security	0	382	6,000	-5,618	6%	8,000
Building maintenance	4,113	160,729	112,500	48,229	143%	150,000
Equipment fuel and repairs	2,946	59,176	67,500	-8,324	88%	90,000
Fire Services	0	4,753	23,813	-19,060	20%	31,750
Grounds maintenance	723	17,976	11,250	6,726	160%	15,000
Maintenance salaries	40,629	297,613	286,593	11,020	104%	382,124
Other maintenance expenses	4,695	15,172	15,000	172	101%	20,000
Snow removal expense	0	8,740	15,000	-6,260	58%	20,000
Utilities	25,650	217,536	225,000	-7,464	97%	300,000
Total Maintenance expenses	96,043	829,493	800,156	29,337	104%	1,066,874
Total Expense	321,755	2,291,337	2,160,210	131,127	106%	2,880,279
Net Ordinary Income	34,821	158,673	21,909	136,764	724%	29,211
Other Income/Expense						
Other Income						
Capital contributed	2,866,847	4,348,846	4,637,724	-288,878	94%	6,183,632
Gain on sale of assets	0	0	10,000	-10,000	0%	20,000
Interest income						
Interest income on deposits	1,136	5,775	1,125	4,650	513%	1,500
Total Interest income	1,136	5,775	1,125	4,650	513%	1,500
Mill levy income	204,671	1,842,041	1,842,041	0	100%	2,456,055
Total Other Income	3,072,654	6,196,662	6,490,890	-294,228	95%	8,661,187
Other Expense						
Debt interest expense net						
Bond issue cost	0	11,640	45,000	-33,360	26%	45,000
Interest Expense on Debt	47,044	423,398	423,398	0	100%	564,530
Total Debt interest expense net	47,044	435,038	468,398	-33,360	93%	609,530
Depreciation expense	242,087	2,178,783	2,178,783	0	100%	2,905,044
Total Other Expense	289,131	2,613,821	2,647,181	-33,360	99%	3,514,574
Net Other Income	2,783,523	3,582,841	3,843,709	-260,868	93%	5,146,613
Net Income	2,818,344	3,741,514	3,865,618	-124,104	97%	5,175,824

Salina Airport Authority
Profit & Loss Prev Year Comparison
January through September 2022

8:55 PM
10/16/2022
Accrual Basis

	Jan - Sep 22	Jan - Sep 21	\$ Change	% Change
Ordinary Income/Expense				
Income				
Airfield revenue				
Fuel Flowage Fees	168,456.35	132,968.70	35,487.65	26.69%
Hangar rent	759,271.28	626,535.51	132,735.77	21.19%
Landing fees	32,557.91	22,400.55	10,157.36	45.34%
Ramp rent	50,122.00	48,037.00	2,085.00	4.34%
Total Airfield revenue	1,010,407.54	829,941.76	180,465.78	21.74%
Building and land rent				
Agri land rent	69,119.55	67,462.55	1,657.00	2.46%
Building rents - Long Term				
Short-term leasing	348,491.00	303,064.96	45,426.04	14.99%
Building rents - Long Term - Other	695,885.63	700,065.64	-4,180.01	-0.6%
Total Building rents - Long Term	1,044,376.63	1,003,130.60	41,246.03	4.11%
Land rent				
Basic Land Rent	117,311.09	123,972.87	-6,661.78	-5.37%
Property tax - tenant share	80,569.89	85,068.00	-4,498.11	-5.29%
Total Land rent	197,880.98	209,040.87	-11,159.89	-5.34%
Tank rent	10,980.00	10,503.00	477.00	4.54%
Total Building and land rent	1,322,357.16	1,290,137.02	32,220.14	2.5%
Other revenue				
Airport Marketing	20,000.00	0.00	20,000.00	100.0%
ARFF Training	5,610.00	2,460.00	3,150.00	128.05%
Commissions	18,929.97	14,902.22	4,027.75	27.03%
Other income	72,704.98	55,071.09	17,633.89	32.02%
Total Other revenue	117,244.95	72,433.31	44,811.64	61.87%
Uncategorized Income	0.00	0.00	0.00	0.0%
Total Income	2,450,009.65	2,192,512.09	257,497.56	11.74%
Gross Income	2,450,009.65	2,192,512.09	257,497.56	11.74%
Expense				
Administrative expenses				
A/E, consultants, brokers	75,319.05	24,966.55	50,352.50	201.68%
Airport promotion				
Air Serv. Mktg - SAA	183,003.65	159,216.11	23,787.54	14.94%
Airport promotion - Other	5,734.31	3,609.38	2,124.93	58.87%
Total Airport promotion	188,737.96	162,825.49	25,912.47	15.91%
Bad Debt Expense	0.00	107.00	-107.00	-100.0%
Computer/Network Admin.	27,881.89	20,709.96	7,171.93	34.63%
Dues and subscriptions	24,435.79	21,366.79	3,069.00	14.36%
Employee retirement	67,175.48	58,835.30	8,340.18	14.18%
FICA and medicare tax expense	54,730.04	49,256.11	5,473.93	11.11%
Industrial development	43,125.03	21,375.00	21,750.03	101.76%
Insurance , property	173,464.83	153,749.97	19,714.86	12.82%
Insurance, medical	146,646.14	149,447.04	-2,800.90	-1.87%
Kansas unemployment tax	715.43	6,365.27	-5,649.84	-88.76%
Legal and accounting	49,668.70	51,184.50	-1,515.80	-2.96%
Office salaries	445,389.43	393,608.73	51,780.70	13.16%
Office Supplies	9,136.75	6,266.00	2,870.75	45.82%
Other administrative expense				
Merchant Processing Fees	5,815.91	7,944.65	-2,128.74	-26.8%
Other administrative expense - Other	4,454.13	5,343.50	-889.37	-16.64%
Total Other administrative expense	10,270.04	13,288.15	-3,018.11	-22.71%
Payroll expenses	0.00	0.00	0.00	0.0%
Postage	1,076.64	1,064.34	12.30	1.16%
Property tax expense	108,423.72	128,140.47	-19,716.75	-15.39%
Special Events	1,423.32	2,082.98	-659.66	-31.67%
Telephone	14,496.60	18,604.12	-4,107.52	-22.08%
Training	7,148.46	334.95	6,813.51	2,034.19%
Travel and meetings	12,578.63	9,668.28	2,910.35	30.1%
Total Administrative expenses	1,461,843.93	1,293,247.00	168,596.93	13.04%

	Jan - Sep 22	Jan - Sep 21	\$ Change	% Change
Maintenance expenses				
Airfield maintenance	47,416.08	35,488.59	11,927.49	33.61%
Airport Security	382.36	5,836.03	-5,453.67	-93.45%
Building maintenance	160,729.19	109,981.98	50,747.21	46.14%
Equipment fuel and repairs	59,176.46	70,182.56	-11,006.10	-15.68%
Fire Services	4,752.50	23,393.88	-18,641.38	-79.69%
Grounds maintenance	17,975.72	10,039.76	7,935.96	79.05%
Maintenance salaries				
COVID-19 Compensation	0.00	343.00	-343.00	-100.0%
Maintenance salaries - Other	297,613.48	248,012.73	49,600.75	20.0%
Total Maintenance salaries	297,613.48	248,355.73	49,257.75	19.83%
Other maintenance expenses	15,172.30	12,946.55	2,225.75	17.19%
Snow removal expense	8,740.00	2,684.74	6,055.26	225.54%
Utilities	217,535.52	309,430.29	-91,894.77	-29.7%
Total Maintenance expenses	829,493.61	828,340.11	1,153.50	0.14%
Uncategorized Expenses	0.00	0.00	0.00	0.0%
Total Expense	2,291,337.54	2,121,587.11	169,750.43	8.0%
Net Ordinary Income	158,672.11	70,924.98	87,747.13	123.72%
Other Income/Expense				
Other Income				
Capital contributed				
ARPA Grant No. 45 - Equipment	0.00	0.00	0.00	0.0%
ARPA Grant No. 45 - Operating	75,271.79	0.00	75,271.79	100.0%
CARES Grant No. 41 - Operating	0.00	183,669.53	-183,669.53	-100.0%
CRRSAA Grant No. 43 - Equipment	0.00	270,402.57	-270,402.57	-100.0%
CRRSAA Grant No. 43 - Operating	0.00	512,128.65	-512,128.65	-100.0%
Capital contributed - Other	4,273,573.72	75,110.27	4,198,463.45	5,589.73%
Total Capital contributed	4,348,845.51	1,041,311.02	3,307,534.49	317.63%
Gain on sale of assets	0.00	193,240.00	-193,240.00	-100.0%
Interest income				
Interest income on deposits	5,775.48	711.68	5,063.80	711.53%
Total Interest income	5,775.48	711.68	5,063.80	711.53%
Mill levy income	1,842,041.25	1,901,001.78	-58,960.53	-3.1%
Total Other Income	6,196,662.24	3,136,264.48	3,060,397.76	97.58%
Other Expense				
Debt interest expense net				
Bond issue cost	11,640.00	46,968.62	-35,328.62	-75.22%
Interest Expense on Debt	423,397.80	482,445.00	-59,047.20	-12.24%
Total Debt interest expense net	435,037.80	529,413.62	-94,375.82	-17.83%
Depreciation expense	2,178,782.64	2,136,061.53	42,721.11	2.0%
Total Other Expense	2,613,820.44	2,665,475.15	-51,654.71	-1.94%
Net Other Income	3,582,841.80	470,789.33	3,112,052.47	661.03%
Net Income	3,741,513.91	541,714.31	3,199,799.60	590.68%

Salina Airport Authority
Capital Additions Budget vs. Actual
As of September 30, 2022

8:59 PM
10/16/2022
Accrual Basis

	Sept 22	Jan - Sep 22	Annual Budget	+/- Annual Budget	% of Annual Budget
ASSETS					
Fixed Assets					
Fixed assets at cost					
Airfield					
AIP-42 Rwy 17/35 Rehab	2,866,848	3,079,086	3,872,315	-793,229	80%
AIP-47 Pumphouse 305		20,449	380,957	-360,508	5%
AIP-48 Terminal Parking Lot Reh		2,490	562,500	-560,010	0%
AIP-XX Rwy 12/30 Rehab Design		45,793	285,250	-239,457	16%
AIP-XX Terminal Bldg. Expansion		10,064	1,393,302	-1,383,238	1%
Airfield Improvements		27,344	50,000	-22,656	55%
GA Hangar Construction		0	730,000	-730,000	0%
GA Hangar taxilane		0	113,172	-113,172	0%
GA Hangars Design		0	17,694	-17,694	0%
KAIP-2022 Rwy 17/35 N 4,800ft.		1,561,448	1,691,185	-129,737	92%
North Ramp Development		13,098	7,500	5,598	175%
Rwys 17/35 - 12/30 LED Lighting		128,594	175,000	-46,406	73%
Total Airfield	2,866,848	4,888,366	9,278,875	-4,390,509	53%
Buildings & Improvements					
Bldg. 120 Terminal building					
Concourse Imps.		311,023	393,107	-82,084	79%
South overflow parking lot A/E		18,500	18,500	0	100%
South overflow parking lt const	2,571	151,049	155,170	-4,121	97%
Terminal Bldg. Other	6,175	6,175	15,000	-8,825	41%
Total Bldg. 120 Terminal building	8,746	486,747	581,777	-95,030	84%
Building improvements					
2021-12-15 Storm Damage	38,649	239,534	1,000,000	-760,466	24%
Bldg. #1021 Facility Imps.		135,624	151,891	-16,267	89%
Bldg. 394 Parking Lot Imps.		0	50,000	-50,000	0%
Bldg. 412 Imps.		24,300	35,000	-10,700	69%
Bldg. 520 Imps.	23,546	86,763	50,000	36,763	174%
Bldg. 595 Improvements Const.	644,619	1,386,054	1,664,000	-277,946	83%
Bldg. 595 Improvements Design		99,700	99,700	0	100%
Bldg. 655 Improvements		29,253	40,000	-10,747	73%
Bldg. Imps. Other		49,787	45,000	4,787	111%
Hangar #509 Imps.		0	20,000	-20,000	0%
Hangar 600 Improvements	29,875	61,460	16,490	44,970	373%
Hangar 626 Rehabilitation	104,000	104,000	246,000	-142,000	42%
Hangar 959 Rehabilitation		61,485	32,725	28,760	188%
Total Building improvements	840,689	2,277,960	3,450,806	-1,172,846	66%
FBO Improvements					
Bldg. 700 Imps. Avflight North		23,331	45,000	-21,669	52%
Hangar 409-1 Imps Avflight So.		0	10,000	-10,000	0%
Total FBO Improvements		23,331	55,000	-31,669	42%
Total Buildings & Improvements	849,435	2,788,038	4,087,583	-1,299,545	68%

	Sept 22	Jan - Sep 22	Annual Budget	+/- Annual Budget	% of Annual Budget
Equipment					
Airfield Equipment		0	15,000	-15,000	0%
ARFF equipment		-17,413	25,000	-42,413	-70%
Communications equipment		7,609	20,000	-12,391	38%
Computer equipment		3,334	25,000	-21,666	13%
Industrial center equipment		0	15,000	-15,000	0%
Office equipment		0	7,500	-7,500	0%
Other Equipment		0	5,000	-5,000	0%
Shop equipment		3,585	20,000	-16,415	18%
Terminal bldg equipment		0	10,000	-10,000	0%
Vehicles		0	25,000	-25,000	0%
Total Equipment	0	-2,885	167,500	-170,385	-2%
Land					
Airport Indust. Cent. Imps.					
AIC-City-Wide Storage Tract Imp		0	15,000	-15,000	0%
Airport Indust. Cent. Imps. - Other		0	3,000	-3,000	0%
Total Airport Indust. Cent. Imps.	0	0	18,000	-18,000	0%
Rail Spur Imps.		0	20,000	-20,000	0%
Total Land	0	0	38,000	-38,000	0%
Total Fixed assets at cost	3,716,283	7,673,519	13,571,958	-5,898,439	57%

Salina Airport Authority

Significant Capital Expenditures Detail

September 2022

Type	Date	Name	Memo	Amount	Balance
Fixed assets at cost					
Airfield					
AIP-42 Rwy 17/35 Rehab					
Bill	09/23/2022	Bettis Asphalt & Construction, Inc.	Rehabilitate 7,500' of Runway 17/35 Pavement and Taxiway D Subgra...	2,866,847.60	2,866,847.60
Total AIP-42 Rwy 17/35 Rehab				2,866,847.60	2,866,847.60
Total Airfield				2,866,847.60	2,866,847.60
Buildings & Improvements					
Bldg. 120 Terminal building					
South overflow parking lt const					
Bill	09/01/2022	Nex-Tech Communications LLC	South Overflow parking area - Install 6 Cat. 6 Jacks, 1 port cover; wiri...	411.29	411.29
Bill	09/19/2022	Gleason & Son Signs, Inc.	Parking signs for new parking lot	2,160.00	2,571.29
Total South overflow parking lt const				2,571.29	2,571.29
Terminal Bldg. Other					
Bill	09/19/2022	Accurate Electric Inc	Terminal Bldg. - TSA area lighting upgrades	6,175.00	6,175.00
Total Terminal Bldg. Other				6,175.00	6,175.00
Total Bldg. 120 Terminal building				8,746.29	8,746.29
Building improvements					
2021-12-15 Storm Damage					
Bill	09/06/2022	Webcon, Inc.	B412 Roof Repairs - Final payment	38,648.70	38,648.70
Total 2021-12-15 Storm Damage				38,648.70	38,648.70
Bldg. 520 Imps.					
Bill	09/08/2022	Webcon, Inc.	B520 - Patch & Repair roof	14,886.00	14,886.00
Bill	09/21/2022	Sunflower Carpet Inc	B520 Unit A - carpet installation	8,399.63	23,285.63
Bill	09/29/2022	Ritter Tile Inc.	B520, Unit A - Charcoal Cove Base	260.00	23,545.63
Total Bldg. 520 Imps.				23,545.63	23,545.63
Bldg. 595 Improvements Const.					
Bill	09/23/2022	Cheney Construction Inc.	B595 Improvements Application #6	644,618.63	644,618.63
Total Bldg. 595 Improvements Const.				644,618.63	644,618.63
Hangar 600 Improvements					
Bill	09/30/2022	Webcon, Inc.	Hangar 600 Roof Repairs (2720 Arnold Court)	29,875.00	29,875.00
Total Hangar 600 Improvements				29,875.00	29,875.00
Hangar 626 Rehabilitation					
Bill	09/06/2022	Hutton Corporation	H626 design fee	104,000.00	104,000.00
Total Hangar 626 Rehabilitation				104,000.00	104,000.00
Total Building improvements				840,687.96	840,687.96
Total Buildings & Improvements				849,434.25	849,434.25
Total Fixed assets at cost				3,716,281.85	3,716,281.85
TOTAL				3,716,281.85	3,716,281.85

9:28 PM

10/16/22

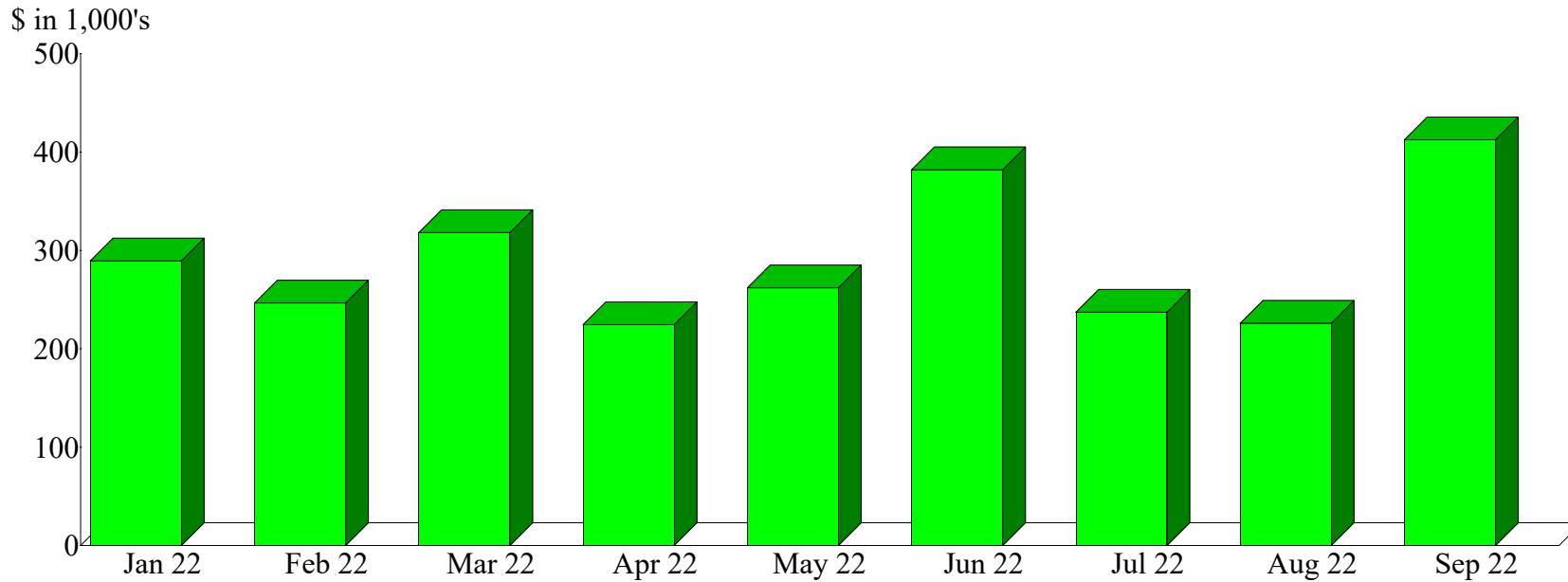
Accrual Basis

Salina Airport Authority
Distributions from the GO Temp Note Project Funds
As of September 30, 2022

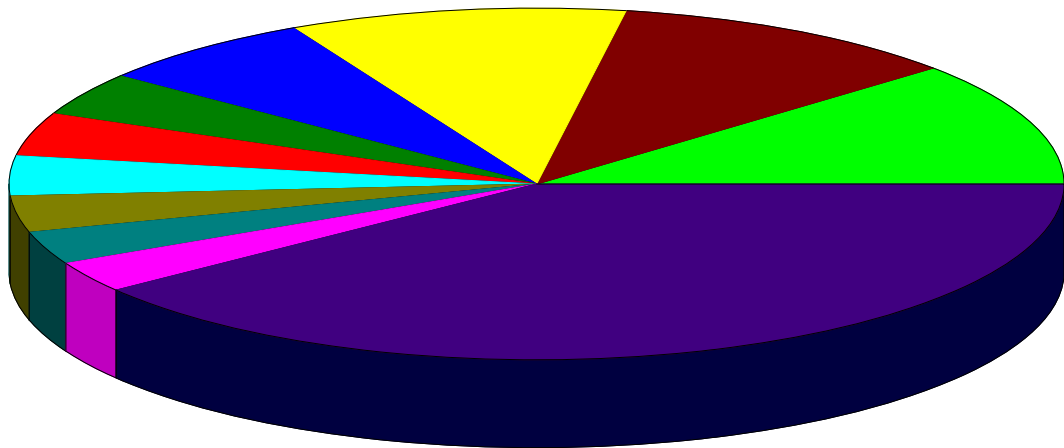
Type	Date	Name	Memo	Debit	Credit	Balance
Cash in Bank-Bond Funds						2,346,909.24
BSB 2021-1 GO Temp Note (8146)						1,383,763.93
Bill Pmt -Check	09/27/2022	Cheney Construction Inc.	SAA BLDG 595 22005 Progress Payment # 5		139,281.70	1,244,482.23
Deposit	09/30/2022		Interest	227.47		1,244,709.70
Total BSB 2021-1 GO Temp Note (8146)				227.47	139,281.70	1,244,709.70
BSB 2022-1 GO Temp Note (9668)						963,145.31
Bill Pmt -Check	09/23/2022	Clark, Mize & Linville	GAB review statutes, email, closing notes re CO Temporary Notes		240.50	962,904.81
Bill Pmt -Check	09/23/2022	Hutton Corporation	Pay Estimate #3 Hangar 626		144,000.00	818,904.81
Deposit	09/30/2022		Interest	901.27		819,806.08
Total BSB 2022-1 GO Temp Note (9668)				901.27	144,240.50	819,806.08
Total Cash in Bank-Bond Funds				1,128.74	283,522.20	2,064,515.78
TOTAL				1,128.74	283,522.20	2,064,515.78

Sales by Month
January through September 2022

Dollar Sales



Sales Summary
January through September 2022

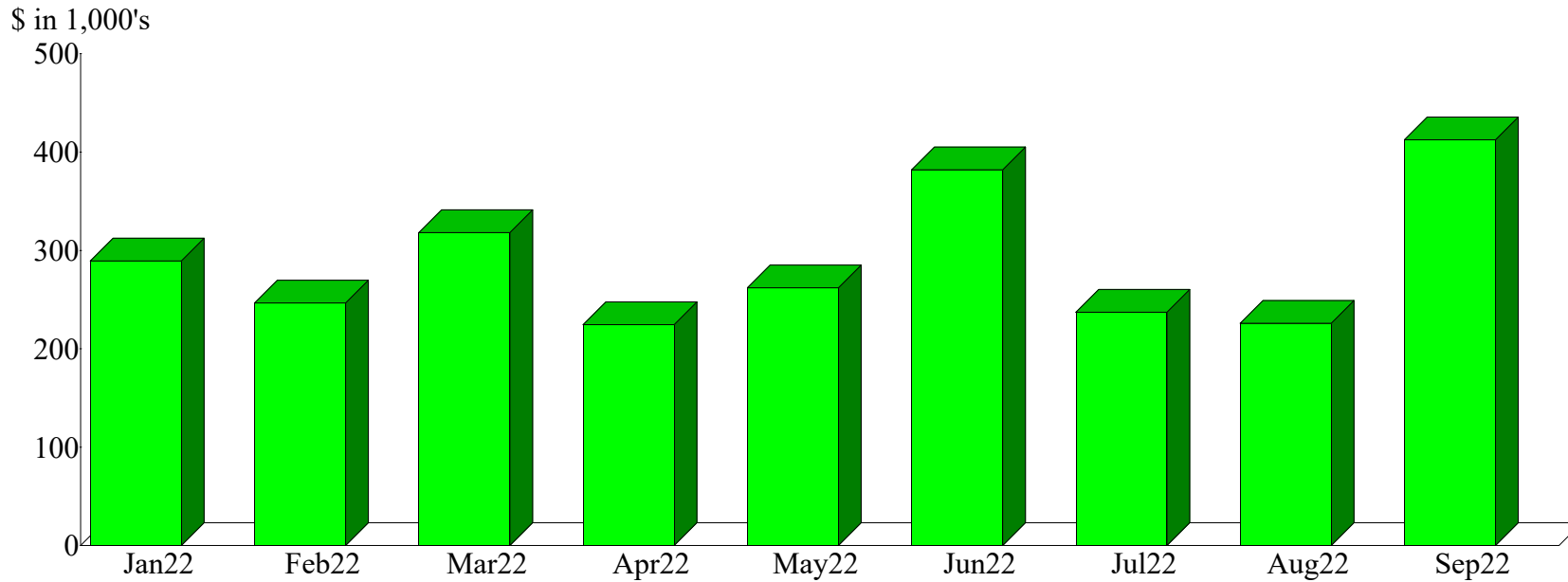


Kansas Erosion Products, LLC.	11.58%
Avflight Salina	10.94
1 Vision Aviation, PLLC	10.42
Stryten Salina, LLC	6.95
SFC Global Supply Chain	4.04
NASA	4.01
USSOCOM (Jaded Thunder)	3.71
Universal Forest Products (UFP)	3.44
Marine Forces Reserve MAG-49	3.16
K-State Salina	3.01
Other	38.74
Total	\$2,598,250.31

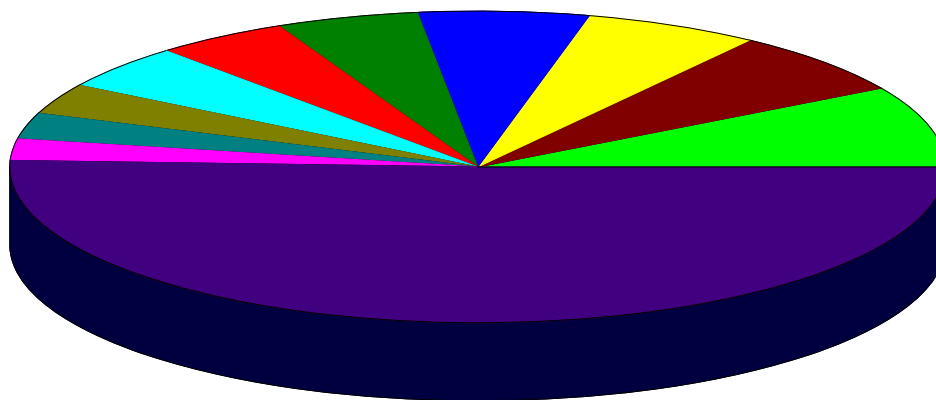
By Customer

Sales by Month
January through September 2022

Dollar Sales



Sales Summary
January through September 2022



H-00959-1 (Hangar Facility H959 - 2044 S	8.49%
B-01021 (Building #1021 located at 3600	6.83
B-00655-3 (Bldg. #655 (96,611 SF) - 2656	6.09
FFF-Avflight Salina (Fuel Flowage Fee @	5.92
H-0600-1 (Hangar 600 - 20,217 sq. ft.)	5.03
Utility Reimbursement (Utility Reimburse	4.71
H-0606-1 (Hangar 606 - 2630 Arnold Ct.	4.64
B-00620-1 (Building #620 (30,000 SF) an	3.31
B-00626-1 (Manufacturing facility #626 (2.80
H-00409-1 (FBO Hangar - 2010 Rogers Ct.)	2.24
Other	49.95
Total	\$2,598,250.31

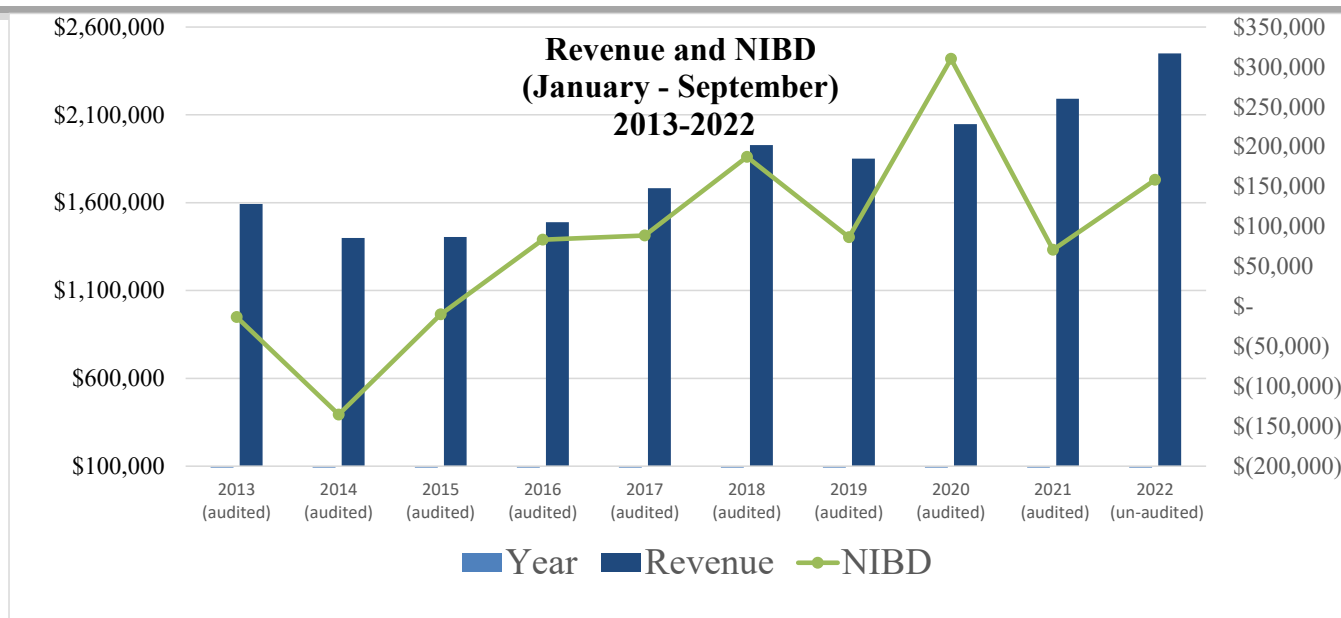
By Item

10-Year Operating Revenue and Expense Analysis

January - September

2013-2022

	2013 (audited)	2014 (audited)	2015 (audited)	2016 (audited)	2017 (audited)	2018 (audited)	2019 (audited)	2020 (audited)	2021 (audited)	2022 (un-audited)
TOTAL REVENUES										
OPERATING REVENUES										
Airfield	\$ 327,248	\$ 388,353	\$ 396,194	\$ 435,091	\$ 388,023	\$ 437,089	\$ 568,385	\$ 579,277	\$ 696,973	\$ 841,952
Fuel flowage fees	97,983	85,808	115,915	113,033	163,501	162,608	148,738	149,136	132,969	168,456
Building and land rent	1,122,137	895,024	822,297	879,289	1,004,581	1,047,811	1,024,780	1,170,594	1,290,137	1,322,357
Other revenue	45,790	29,744	69,904	61,203	126,919	280,492	109,639	148,466	72,433	117,245
TOTAL OPERATING REVENUES	1,593,159	1,398,928	1,404,310	1,488,616	1,683,024	1,928,000	1,851,542	2,047,473	2,192,512	2,450,010
TOTAL EXPENSES										
OPERATING EXPENSES										
Administrative	918,078	885,838	883,408	913,010	947,584	1,141,922	1,134,432	1,143,667	1,293,247	1,461,844
Maintenance	688,460	648,395	530,706	491,809	646,560	598,724	630,304	593,699	828,340	829,494
TOTAL OPERATING EXPENSES	1,606,538	1,534,232	1,414,114	1,404,820	1,594,144	1,740,646	1,764,736	1,737,366	2,121,587	2,291,338
OPERATING INCOME BEFORE DEPRECIATION	\$ (13,379)	\$ (135,304)	\$ (9,803)	\$ 83,796	\$ 88,880	\$ 187,354	\$ 86,806	\$ 310,107	\$ 70,925	\$ 158,672



DMA ARCHITECTS, PA

2035 E. Iron, Suite 100 / Salina, KS 67401
Salina: 785 823 6002 / Fax: 785 823 2910
Great Bend: 620 793 3442

October 3, 2022

Mr. Timothy F. Rogers, A.A.E.
Executive Director
Salina Airport Authority
3237 Arnold Road
Salina, Kansas 67401

RE: Dominion, LLC / Geoprobe / 1840 Wall Street / Salina, Kansas 67401

Dear Tim:

Pursuant to the request I received this afternoon from your office, please consider this letter Dominion, LLC's request that the Salina Airport Authority conduct its Grantor's Site Development Review of this project.

The project consists of expanding the manufacturing assembly building. The addition will add a 240' x 240' expansion on the north end of the existing building. The wall height and roof line will match the existing building. This addition will double the size of the existing building and allow for an expanded manufacturing, painting, assembly, and storage space. This expansion was planned as part of the site development when the existing building was designed and constructed in 2007. The existing on site storm water detention pond was sized for this expansion when it was constructed in 2007.

The work on the project is scheduled to start this fall and be completed and occupied the summer of 2023. A land disturbance permit has been issued by the City of Salina. An FAA Air Clearance Determination is scheduled to be completed by the FAA later this month. The building permit from the City of Salina is scheduled to be issued as soon as the FAA determination has been completed.

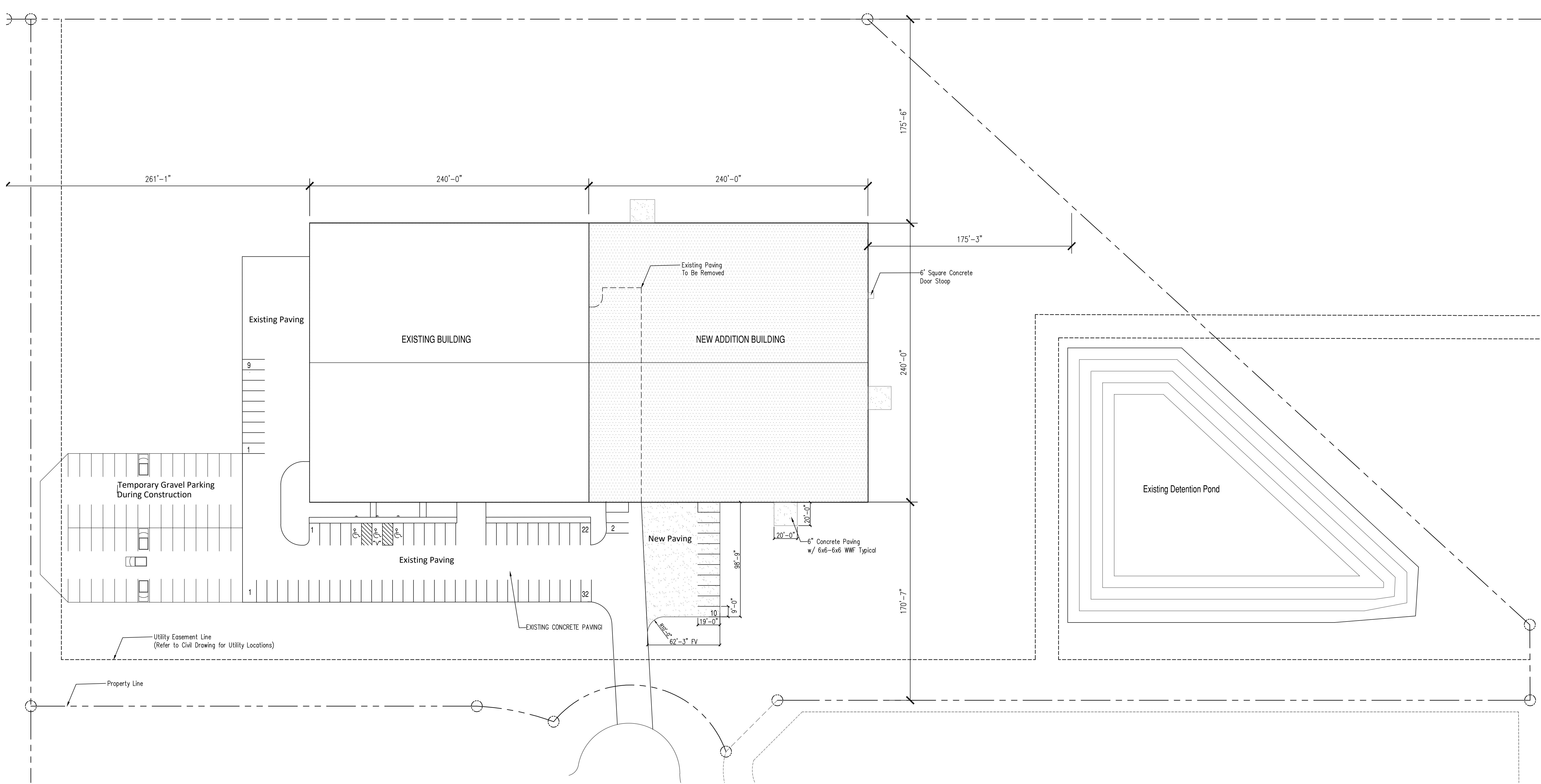
A complete set of construction drawings have previously been submitted to the Salina Airport Authority. Should you have any questions please email or call.

Sincerely,
Consulting Architect



Donnie D. Marrs, AIA

.cc.: Mel Kejr, David Cooper



Parking Requirements:	Area:	Parking Formula	Parking Required
Industrial Exist (F1):	28000	1 per 1500sf	19
Warehouse Exist (S1):	28000	1 per 2000sf	14
Office Exist:	1200	1 per 300sf	4
Total (Existing Only):	57200		37
New Warehouse (S1):	20000	1 per 2000sf	10
Future Manufacturing (F1):	37500	1 per 1500sf	25
Furute F-1 is now S-1:	37500	1 per 2000sf	19
Total Parking Required Now:			65
Total Parking Required Future:			72

A BUILDING LAYOUT
SCALE: 1/16" = 1'-0"



Revisions:

DMA

DMA Architects, PA
2035 E. Iron #100
Salina, Kansas 67401

Phone: 785-823-6002
Fax: 785-823-2910
E-mail: donmarrs@dmapa.com



08/01/22

REPRODUCTION: This document and the information contained herein may not be reproduced or excerpted from without the expressed written consent of DMA Architects, PA. Unauthorized copying, disclosure or construction use are prohibited by Copyright Law

Project: **Dominion, LLC**
Manufacturing Building
1840 Wall Street/Salina, KS 67401

Drawing: **Site Plan and Parking Table**

Job: 2206 **ST1**
Drawn: DM OF
Date: 08-01-22 **1**