

2013 Kneubuhl Court

Salina, Kansas



Salina Airport Authority / Hangar 504

As exclusive agents, we are pleased to offer the following property for lease:

To view a photo gallery of this facility,
please visit

www.salinaairport.com/realestate

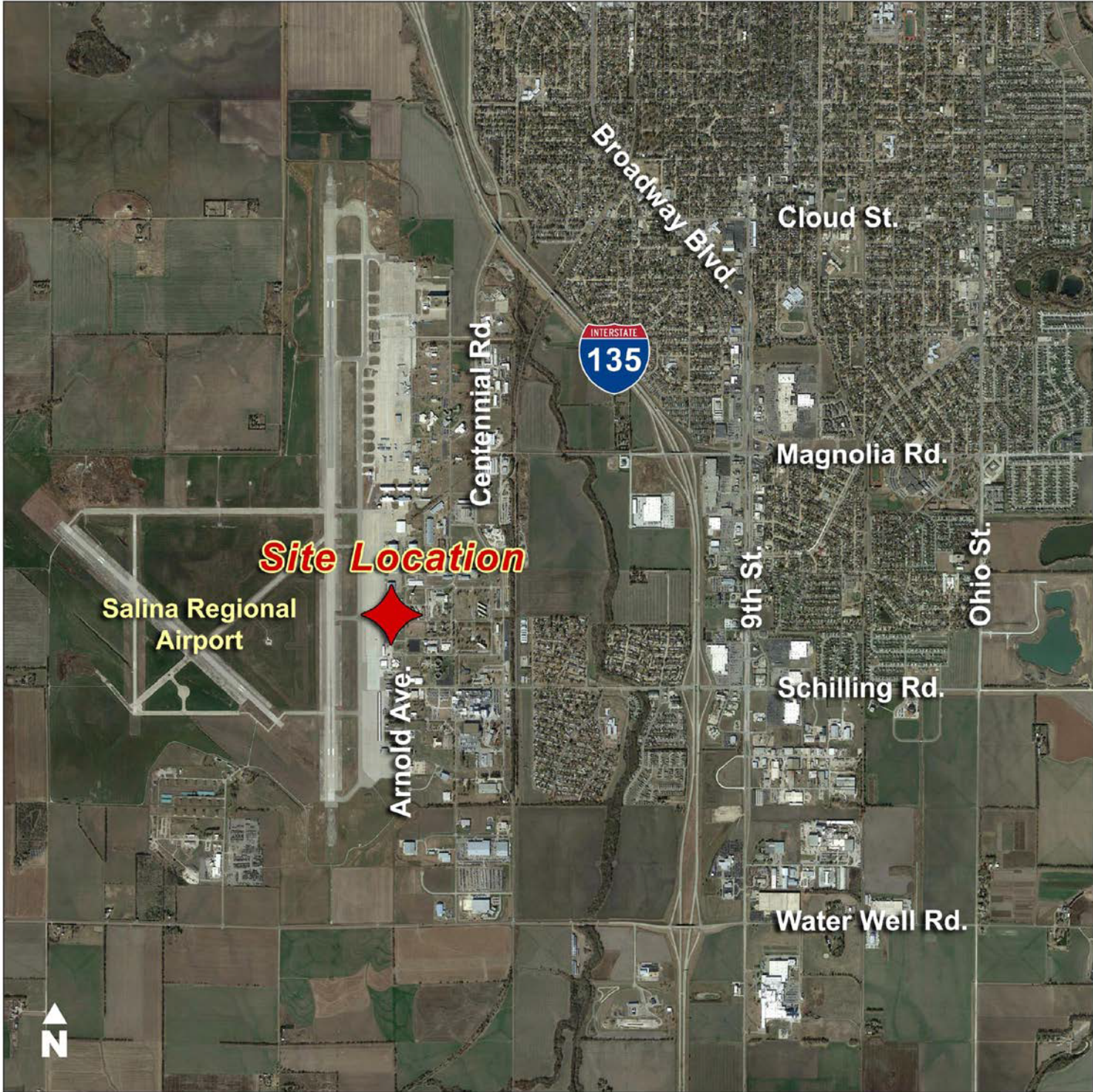
- ◆ 5,617 sf available
- ◆ 3,647 sf of hangar bay (56.5' wide by 55' deep)
- ◆ 1,970 sf of office space
- ◆ Hangar doors provide 19' tail height clearance
- ◆ Local and state economic development incentives
- ◆ 12,300' Primary runway
- ◆ 6,510' Crosswind runway
- ◆ 6 On field helipads
- ◆ Coordination options for class C ARFF coverage
- ◆ Rental Ground Support Equipment
- ◆ Worldclass FBO Avflight Salina
- ◆ Ample ramp space and ramp parking
- ◆ ILS Percision, non-Precision, and GPS approaches
- ◆ High Intensity Runway Lighting
- ◆ 100LL and JET-A Available
- ◆ Bulk oxygen available
- ◆ Easy access to I-135 and I-70

Shelli Swanson, C.M. 785.827.3914 shellis@salair.org
www.salinaairport.com



2013 Kneubuhl Court

Salina, Kansas

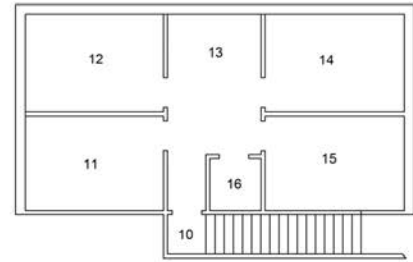
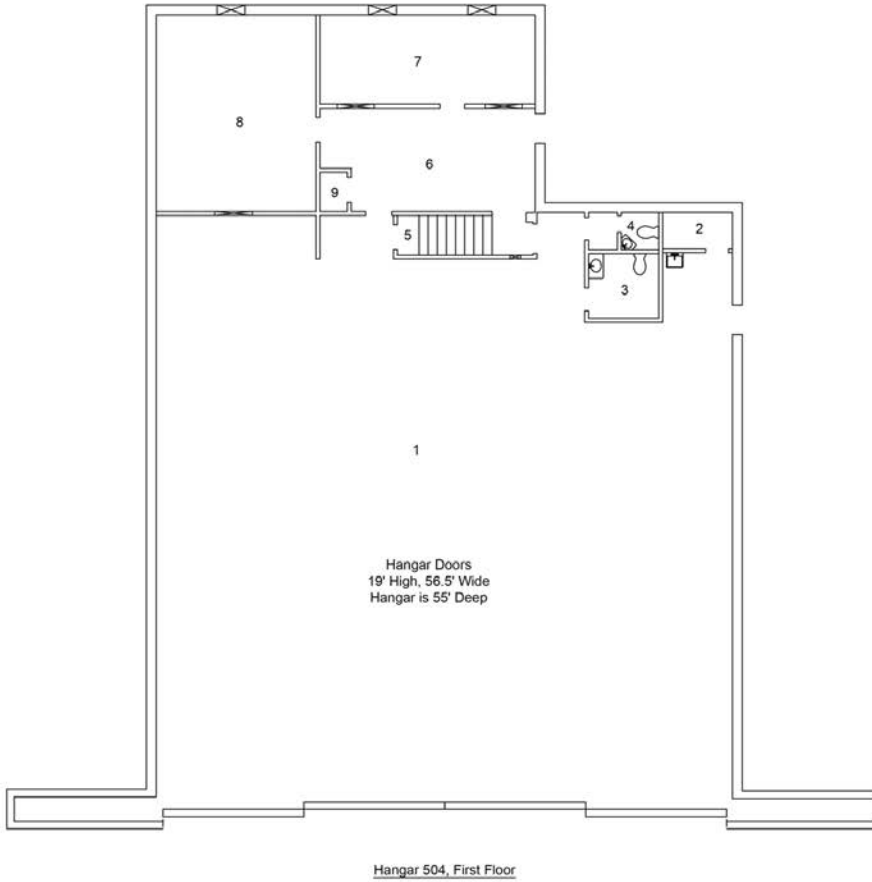


Shelli Swanson, C.M. 785.827.3914 shellis@salair.org
www.salinaairport.com

2013 Kneubuhl Court

Salina, Kansas

Floor Plan



Hangar 504
2010 A Kneubuhl Court

Hangar Area = 3,647 S.F.
Office Area
1st Floor = 1,109 S.F.
2nd Floor = 861 S.F.

Total Area = 5,617 S.F.

Existing Utilities

Water
Gas
Power
240/120V 3 Phase
No Fire Suppression



Shelli Swanson, C.M. 785.827.3914 shellis@salair.org
www.salinaairport.com