

DATE: March 10, 2016
TO: SAA Board of Directors
FROM: Tim Rogers and Shelli Swanson
SUBJECT: **March 16, 2016 SAA Annual Board Meeting**

Enclosed are items for your review prior to Wednesday's meeting. Please note that the meeting will be held in the **second floor conference room, Hangar 600, 2720 Arnold Ct.** A map showing the location of Hangar 600 is enclosed in your board meeting packet.

The meeting will be the board's annual meeting at which time officers will be elected for 2016 – 2107.

Please note the following agenda comments.

50 Years Ago – March, 1966

The Airport Authority board of directors committed to join other Salina leaders to support and assist efforts to establish the Schilling Institute (the predecessor to K-State Polytechnic). The Airport Authority pledged to underwrite the cost of properly maintaining buildings and land until the Schilling Institute could start operations. The close cooperation between the Airport Authority and K-State Polytechnic continues to this day.

Agenda Item #4 – Acceptance of Appointment and Oath of Office for Brian Weisel (Neuschafer)

Enclosed is a copy of the Acceptance of Appointment and Oath of Office for newly appointed Airport Authority board member, Brian Weisel. Currently, Brian is the Salina Regional Health Center's director for quality improvement and lean management training. Previously, Brian held management positions with Philips Lighting (Salina) and Raytheon Aircraft Corporation (Wichita & Salina). Brian is a U.S. Air Force veteran with over 4,700 hours of military flight time and his service included time as deputy base commander for McConnell AFB. While in the Wichita area, Brian served on the Derby, KS city council.

Agenda Item #6 – Review of airport activity and financial reports for the month ending February 29, 2016
(Rogers and Swanson)

Airport Activity – Air Traffic (Rogers)

Aircraft operations picked up during February 2016 as expected. Air traffic controllers recorded 7,789 operations during February 2016 which was a 9% increase over the February 2015 total of 7,133. During February 2016, total itinerant operations increased 22% as compared to February 2015.

Airport Activity – Fuel Flowage (Rogers)

February 2016 fuel flowage was down 27% as compared to the February 2015 total of 188,386 gallons. It's worth noting that during Feb. 2015, SLN handled several Fort Riley – Installation Transportation Office (FRI-ITO) flights that resulted in the nearly 90,000 gallons difference in military fuel delivered when comparing Feb. 2015 to Feb. 2016. If you remove the Feb. 2015 FRI-ITO flights from the calculation, total gallons sold are actually up 35% over the prior year. The cyclical nature of the FRI-ITO flights will create these wide swings in variances during the remainder of the year when comparing monthly totals from year to year. The February 2016 gallons delivered was better than anticipated due to Bombardier CS-300 flight test operations. The CS-300 operations went so well that Bombardier was able to depart Salina earlier than scheduled. Additional Bombardier flight test deployments have since been scheduled.

Airport Activity – Passenger Enplanements (Rogers)

There were no scheduled or charter passenger enplanements during February 2016.

Financial Reports – Comments and Notes (Swanson)

The SAA's financial statement auditors, Clubine & Rettele, completed a week of audit fieldwork during the last week of February. In addition to performing substantive testing during the audit, the hours spent in our work environment allowed the auditors to observe and obtain a good understanding of our internal control framework. The audit committee will review the results of the field work at their next meeting.

At the end of February, the SAA remitted the first of the 2016 semi-annual debt interest payments on our outstanding long-term debt (bonds) in the amount of \$477,581 to the Kansas State Treasurer's office.

In reviewing the February financial statements you will notice that total operating income arrived 9% under budget projections with total operating expenses ending up 11% under budget. Total revenue is tracking within 2% of last year and total expenses are down 8% or \$28,951. Total capital expenditures for the month was \$83,262 with \$127,338 expended on fixed assets year-to-date.

During February 2016, no funds were distributed from the 2015-A General Obligation Bond Fund.

Financial Reports – February 2016 Significant Expenditures/Payables Report Enclosed

Financial Reports – Accounts Receivable Past Due 31 days or more as of March 10, 2016 (Swanson)

<u>Account</u>	<u>Amount</u>	<u>Days</u>	<u>Comments</u>
Terry Belcher	\$107	31-60	T-hangar rent
Kenny's Body Shop	\$272	31-60	Storage Igloo rent
KSARNG	\$7,834	>90	Ramp repair cost share
Seaport Airlines	\$2,191.16	31-90	Bldg. rent and landing fees

Short-term Leasing Activity

Short-term leasing activity continues to be favorable during the first quarter of 2016. Since the February board meeting, the SAA has leased another section of the Airport Road equipment yard storage to The Diamond Engineering Co. out of Wichita. This lease for ½ acre is for a minimum of 3 months while the company utilizes the space to store equipment and materials associated with their fiber optic installation at the Airport Industrial Center. Rental income is \$930 per quarter. Total short-term leasing revenue is expected to reach \$50,000 for 2016.

Agenda Item #7 – Building B723 Lease Extension (Swanson)

Enclosed is the Wichita WinWater Works Co. Lease Renewal Agreement. Since March 21, 2014, WinWater has leased building B723 (9,359 SF) and intends to extend the current lease for another two (2) years effective April 1, 2016. The current rental rate (\$2,277 per month) would be increased to \$2,305 per month based upon a CPI adjustment.

Lease term:	Two (2) years
Lease rate:	\$2,305 per month
	\$27,660 per year
	\$2.955 per SF per year

Recommendation: Approval of the proposed Wichita WinWater Works Co. lease extension.

Agenda Item #8 – Former Schilling AFB Project Update and Briefing (Rogers)

Matt Schroeder and Dr. Mike Sklash with the Dragoon Corporation will join the meeting via conference call to update the board on the status of the Schilling Project's Remedial Investigation (RI) phase of work. The RI field work is close to being completed and the project will transition to the Feasibility Study (FS) phase. The Feasibility Study will be completed by early 2017 and will define options and recommendations for site cleanup. The FS report will be the basis for a KDHE issued Corrective Action Decision (CAD).

As a reminder, the City of Salina, Salina Airport Authority, USD-305 and K-State Polytechnic are completing the former Schilling AFB RI/FS/CAD pursuant to a U.S District Court Consent Decree. The Consent Decree provided for federal funding in the amount of \$8,426,700 and local funding of \$936,300. The total RI/FS/CAD project is set at \$9,363,000.

Agenda Item #9 – Consideration of SAA Resolution No. 16-01 Recognizing Mike Hoppock (Neuschafer)
Enclosed is a copy of a resolution recognizing Mike Hoppock for his years of service on the Airport Authority board of directors. The board will present Mike with a token of appreciation for his term as board chair and contributions to the Salina Airport Authority's success.

Agenda Item #10 – Election of SAA Board of Directors Officers and Board Assignments for 2015-2016
(Neuschafer)

The recommended slate of officers for 2016-2017 is as follows:

Chairman	Troy Vancil
Vice-Chairman	Katie Platten
Secretary	Jeff Maes
Treasurer	Brian Weisel
Past Chairman	Daran Neuschafer

The recommended committee assignments for 2016-2017 are as follows:

Salina Area Chamber of Commerce Board of Directors	Troy Vancil
Salina Economic Development Incentives Council	Troy Vancil
SAA Finance and Audit Committee	Katie Platten Brian Weisel
Air Service Working Group	Jeff Maes Daran Neuschafer

Agenda Item #11 – SAA Resolution No. 16-02 (Swanson)

Enclosed is a copy of the 2016 resolution that designates the banks used by the Airport Authority. The resolution also specifies individuals authorized to sign SAA checks and defines the number of signatures required on each check.

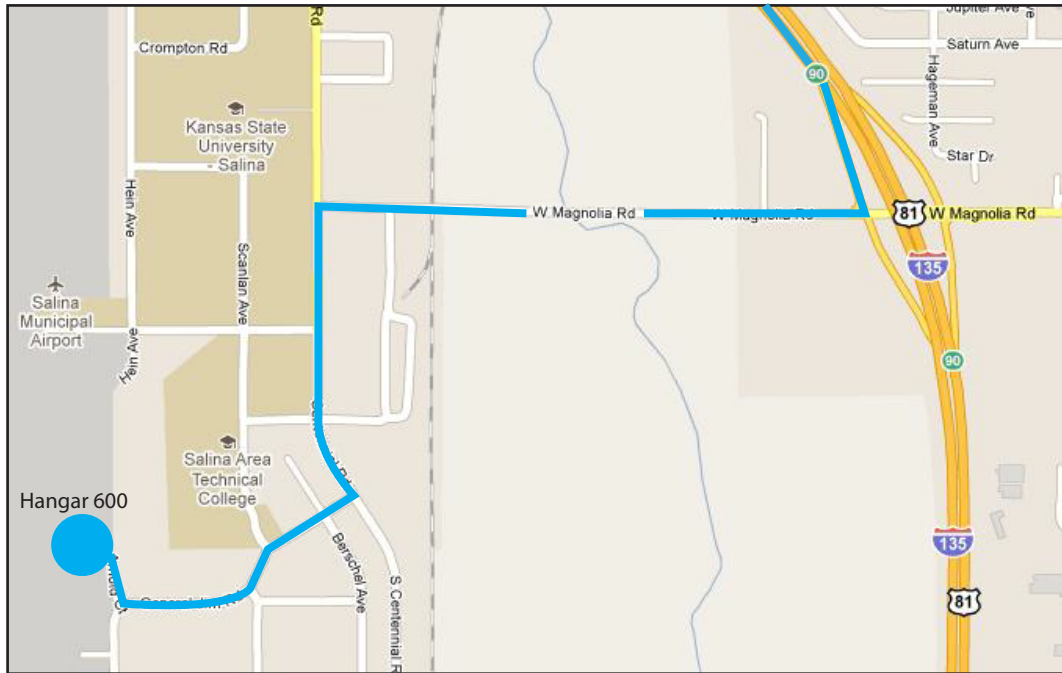
Please contact me if you have any questions or comments.

Hangar 600

driving directions

2720 Arnold Ct., Salina, Kan.

Traveling I-135 South Bound



Take Exit 90

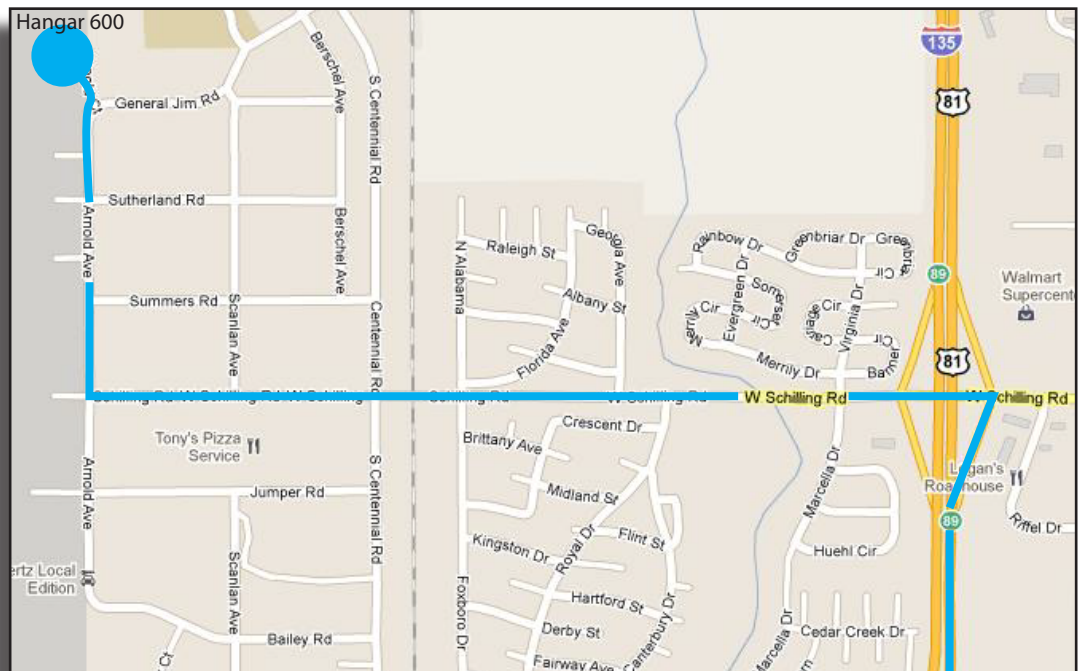
Turn right on Magnolia Rd.

Turn left on Centennial Rd.

Turn right on Scanlan Rd.

Turn right into Arnold Ct.

Traveling I-135 North Bound



Take Exit 89

Turn left on Schilling Rd.

Turn right on Arnold Ave.

Turn left into Arnold Ct.

SALINA AIRPORT AUTHORITY ANNUAL BOARD MEETING
Hangar H600, Second Floor Conference Room
2720 Arnold Court
March 16, 2016 – 8:00 AM

AGENDA

Action Items

1. Call to order and determine a quorum is present. (Neuschafer)
2. Recognition of guests. (Neuschafer)
3. Additions to the agenda. (Rogers)
4. Acceptance of Appointment and Oath and Office by Brian Weisel. (Neuschafer)
5. Approval of the minutes of the February 29, 2016 regular board meeting. (Neuschafer)
6. Review of airport activity and financial reports for the month ending February 29, 2016. (Rogers and Swanson)
7. Approval of a Lease Renewal Agreement with Wichita Winwater Works, Co. (Swanson)
8. Former Schilling AFB Project update and status report (Rogers)
9. Consideration of SAA Resolution 16-01 Recognizing Mike Hoppock for three years of service as member of the Salina Airport Authority board of directors. (Neuschafer)
10. Election of officers and board member committee assignments for 2016 – 2017. (Neuschafer)
11. Consideration of SAA Resolution 16-02 designating the various bank depositories of the Salina Airport Authority. (Neuschafer)

Directors' Forum (Neuschafer)

Visitor's Questions and Comments (Neuschafer)

Staff Reports

- Great Lakes Airlines and Denver flights update (Rogers)
- Terminal building remodeling project update (Rogers & Bieker)
- Airport and Airport Industrial Center marketing and recruitment activity (Rogers & Swanson)

Announcements

Adjournment (Neuschafer)



ACCEPTANCE OF APPOINTMENT

The Undersigned hereby certifies that he is qualified to accept the appointment and does hereby accept his appointment as a member of the Board of Directors of the Salina Airport Authority of the City of Salina, Kansas, for a term of three (3) years commencing on the 16th day of March, 2016 and ending on the 28th day of February, 2019 in accordance with and subject to the policies and standards governing the qualifications, appointments and conduct of the members of the aforesaid Board of Directors of the Salina Airport Authority of the City of Salina, Saline County, Kansas, all as provided for by the Ordinance of the City of Salina, Kansas, and the General Statutes of Kansas.

WITNESS my hand this 16th day of March, 2016.

Brian Weisel

OATH OF OFFICE

STATE OF KANSAS, SALINE COUNTY, ss:

I do solemnly swear (or I do solemnly, sincerely and truly declare and affirm) that I will support the Constitution of the United States and the Constitution of the State of Kansas and faithfully discharge the duties as a member of the Board of Directors of the Salina Airport Authority. So help me God (or, and this I do under the pains and penalties of perjury).

Brian Weisel

Subscribed and sworn (affirmed) to before me this 16th day of March, 2016.

Notary Public

My Appointment expires _____.

Filed with me this _____ day of _____, A.D., 2016.

City Clerk

**MINUTES OF THE REGULAR MEETING OF THE BOARD OF
DIRECTORS OF THE SALINA AIRPORT AUTHORITY
FEBRUARY 17, 2016
HANGAR 600 SECOND FLOOR CONFERENCE ROOM**

Call to Order

The meeting was called to order at 8:00 AM by Chairman Hoppock.

Attendance

Attendance was taken. Chairman Hoppock, Directors Maes, Neuschafer, and Vancil were present. Also present were Executive Director Tim Rogers; Director of Administration and Finance Shelli Swanson; Director of Facilities and Construction Kenny Bieker; Office Manager Kasey Windhorst; and Board Attorney Greg Bengtson. Tim Unruh, Salina Journal; Kaye Crawford, City Commission; Luci Larson, County Commission; and Julie Yager-Zuker, Avflight were guests.

Call to Order

Chairman Hoppock asked if there were any additions to the agenda. Executive Director Rogers stated that there were no additions to the agenda.

Minutes

Chairman Hoppock asked if the board members had additions or corrections to the minutes of the January 20, 2016 regular board meeting. Director Neuschafer moved, seconded by Director Maes, to approve the minutes of the January 20, 2016 regular board meeting. Motion passed unanimously.

50 Years Ago

The Airport Authority was in negotiations with Equitable Investment Company, Scientific Engineering Co., and Craddock Uniforms, Inc. for the leasing of certain buildings at the former Schilling AFB in 1966. At the time of closure, the Schilling AFB employed a total of 5,036 people (4,710 military and 326 civilian) with a combined payroll of \$12 million. 50 years later, the Salina Regional Airport and Airport Industrial Center is home to over 100 businesses and organizations.

Airport Activity and Financial Reports

Executive Director Rogers reported on airport activity for the month of January 2016. KSLN controllers recorded a total of 4,422 operations which was 36% below the January 2015 total of 6,918 due to winter storms on both the east and west coast. Rogers discussed the Ft. Riley APOE and Bombardier operations scheduled for 2016 which will help boost total operations and fuel flowage during 2016. 80,221 gallons of fuel was delivered in January 2016, 54% less than the

January 2015 total of 176,746 gallons. SeaPort boarded 36 passengers before ceasing operations on January 15, 2016. SeaPort has filed for bankruptcy and has a balance due of \$2,191 to the SAA.

Director of Administration and Finance Swanson reported on financials for the month of January 2016. Total operating income arrived within 9% of the budget. The SAA secured a short term lease with USD 305 for temporary storage in Building 620 Unit B. Total Administrative expenses arrived 10% below the budget and maintenance costs came in 27% below the budget, bringing total operating expenses at 17% under budget. A significant capital expense was made to Ry-Co Construction in the amount of \$18,682 for facility improvements to Building 409-2. Charter Matrix executed their 12-month payment agreement and remitted the first payment towards their current account balance of \$4,675.20. The SAA audit field work is scheduled for the week of February 22nd.

Saline County Shops Sewer Line Construction

Executive Director Rogers reviewed the proposed new sewer line construction at the Saline County Shops. There is an existing 20-foot utility easement at the north edge of the building B1021 property line that can be used by Saline County for the new sewer line. The SAA will work with the County on additional easement requirements to support the sewer line extension project.

2016 Economic Impact Report

Executive Director Rogers reported on the Economic Impact survey completed by the SAA staff. Over 100 business and organizations located within the Airport and Airport Industrial Center employ over 3,500 employees with an annual payroll of \$141.5 million. Of the jobs at the Airport and Airport Industrial Center, 63% are classified as quality jobs and 33% are classified as premier jobs. Airport and Airport Industrial Center jobs account for 12% of total Saline County employment.

Staff Reports

- Executive Director Rogers gave an update on Great Lakes Airlines. The SAA is receiving multiple calls daily and is keeping a log for future contact to interested citizens.
- Rogers noted that the Terminal Building improvements are underway and on schedule. Construction is to be completed by the end of March.
- Rogers reviewed the FAA Certification Inspection completed on February 9th and 10th. The inspection included day/night airfield inspections, training records, and pumphouse/fueling inspections. Director of Facilities and Construction Bieker noted an item of correction during the daytime inspection including Runway 17/35 centerline painting and minor FOD causing areas near taxiways Foxtrot and Bravo.

- Rogers updated the board on real estate marketing and recruitment efforts. SAA staff has submitted responses to the Kansas Department of Commerce requests for information for Project Elm and Project Blue Star.

Announcements

The SAA will be hosting a Chamber After Hours event on February 25th from 5:00 PM to 7:00 PM in Hangar 600.

Executive Session

At 8:50 A.M. Director Maes moved to recess the open meeting until 9:10 A.M. for an executive session for the following:

Discussing matters relating to airport security for the reason that public discussion of that information would compromise the Salina Airport Authority's security measures for the Salina Regional Airport.

The open meeting shall resume in the Hangar 600 Second Floor Conference Room at 9:10 A.M. Director Vancil seconded the motion. Motion carried unanimously.

The open meeting resumed at 9:10 A.M.

At 9:10 A.M. Director Vancil moved to extend the executive session until 9:30 A.M. Director Neuschafer seconded the motion. Motion carried unanimously.

The open meeting resumed at 9:30 A.M.

Upon a motion duly made, the meeting adjourned at 9:31 A.M.

Minutes approved at the March 16, 2016 Board meeting.

Secretary

(SEAL)

SALINA AIRPORT AUTHORITY

AIRPORT ACTIVITY REPORT

2016

AIR TRAFFIC/ATCT

February, 2016	7,789 Operations
	672 Instrument Operations
	490 Peak Day
February, 2015	7,133 Operations
	685 Instrument Operations
	479 Peak Day
January 2016 - February 2016	12,211 Operations
January 2015 - February 2015	14,051 Operations
January 2014 - February 2014	13,398 Operations

FUEL FLOWAGE

February, 2016	136,763 Gallons
February, 2015	188,386 Gallons
January 2016 - February 2016	216,983 Gallons
January 2015 - February 2015	365,132 Gallons
January 2014 - February 2014	251,224 Gallons

		Avflight	
		Military/Gov't	Self-fuel
KSU-S	Avflight Salina	Portion	Station
12,471	124,292	11,855	890
6,963	181,423	101,243	451
18,098	198,885	15,321	1,309
16,940	348,192	119,201	960
16,949	233,328	35,135	947

ENPLANEMENTS - SEAPORT

		LOAD
		FACTOR
February, 2016	0 Passengers	0%
February, 2015	107 Passengers	21%
January 2016 - February 2016	36 Passengers	17%
January 2015 - February 2015	216 Passengers	18%
January 2014 - February 2014	254 Passengers	22%

TOTAL ENPLANEMENTS - Scheduled Flights & Charter Flights

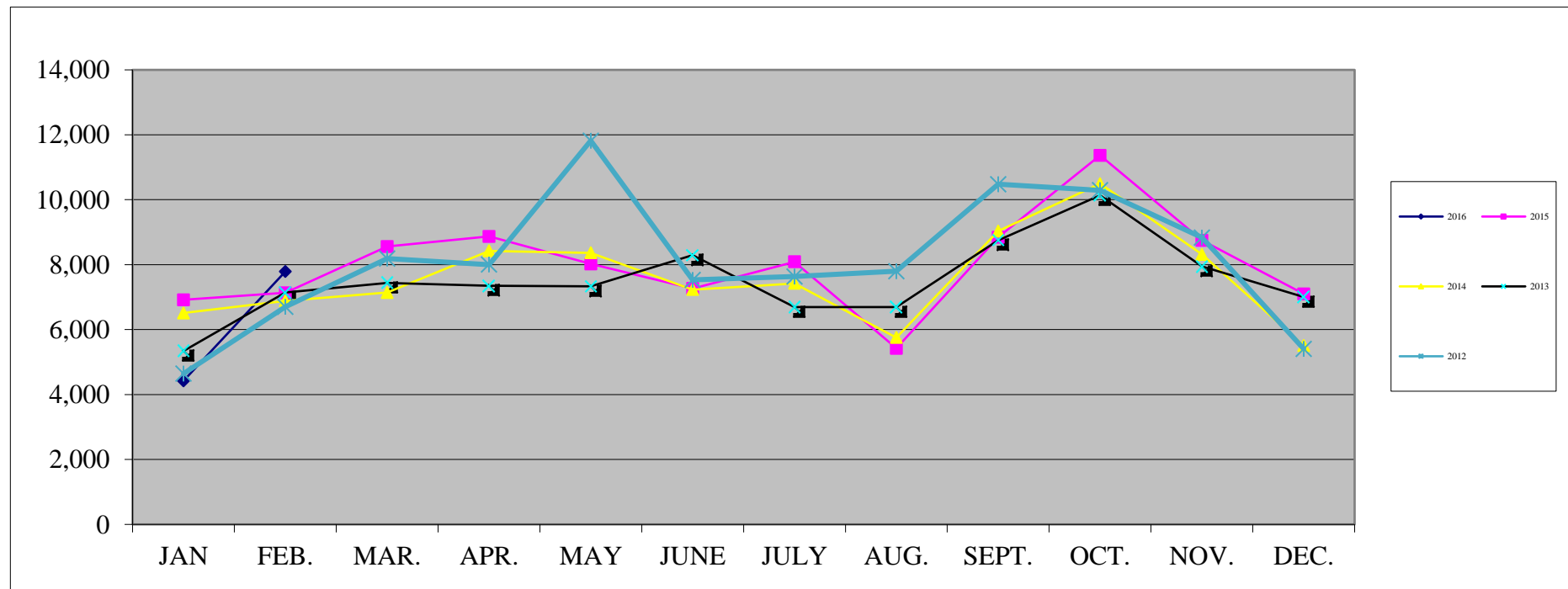
February, 2016	0 Passengers
February, 2015	107 Passengers
January 2016 - February 2016	36 Passengers
January 2015 - February 2015	635 Passengers
January 2014 - February 2014	254 Passengers

AIRPORT TRAFFIC RECORD
2015 - 2016

	ITINERANT					LOCAL			
	AC	AT	GA	MI	Total Itinerant	Civil	Military	Total Local	Total Operations
2016									
January, 16	5	941	676	88	1,710	2,502	210	2,712	4,422
February, 16	78	2,171	1,038	208	3,495	4,064	230	4,294	7,789
March, 16									
April, 16									
May, 16									
June, 16									
July, 16									
August, 16									
September, 16									
October, 16									
November, 16									
December, 16									
Totals January - February	83	3,112	1,714	296	5,205	6,566	440	7,006	12,211
2015									
January, 15	7	1,543	723	138	2,411	4,243	264	4,507	6,918
February, 15	6	1,937	779	138	2,860	3,997	276	4,273	7,133
March, 15									
April, 15									
May, 15									
June, 15									
July, 15									
August, 15									
September, 15									
October, 15									
November, 15									
December, 15									
Totals January - February	13	3,480	1,502	276	5,271	8,240	540	8,780	14,051
Difference	70	-368	212	20	-66	-1,674	-100	-1,774	-1,840
YTD % Change	538%	-11%	14%	7%	-1%	-20%	-19%	-20%	-13%

AIR TRAFFIC

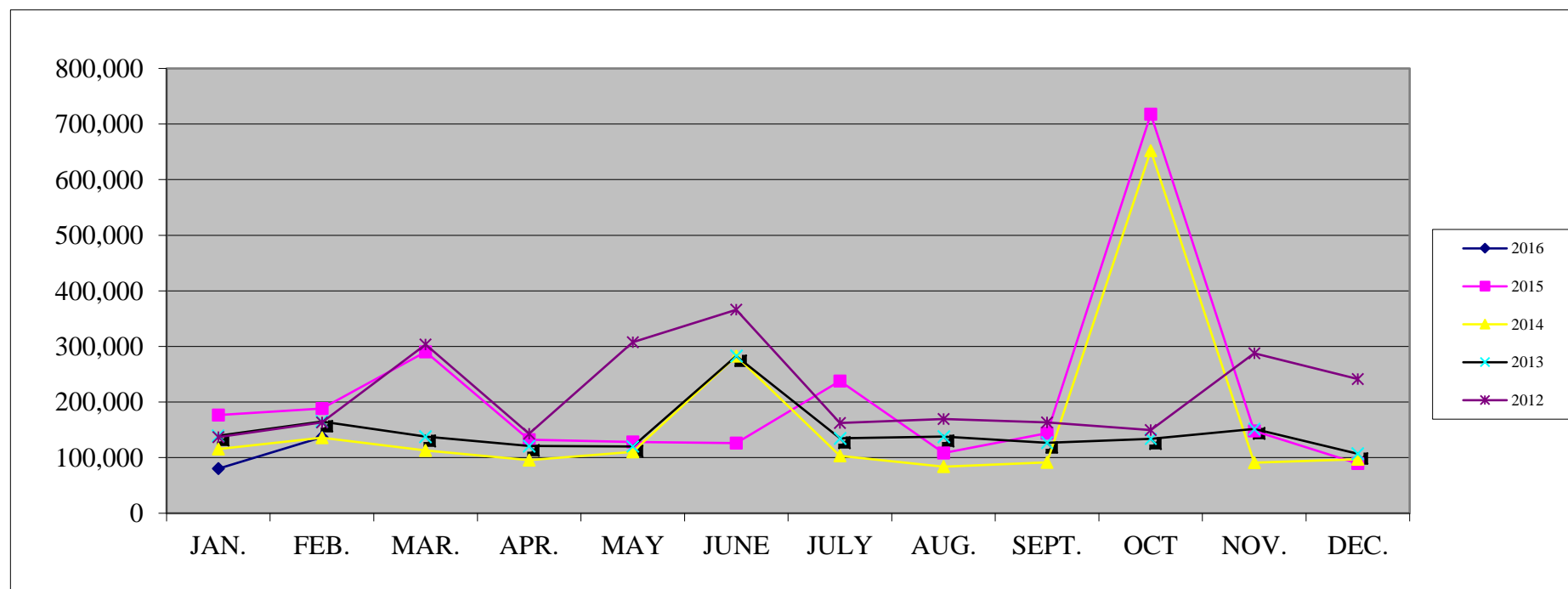
	<u>JAN</u>	<u>FEB.</u>	<u>MAR.</u>	<u>APR.</u>	<u>MAY</u>	<u>JUNE</u>	<u>JULY</u>	<u>AUG.</u>	<u>SEPT.</u>	<u>OCT.</u>	<u>NOV.</u>	<u>DEC.</u>	<u>TOTAL</u>
2016	4,422	7,789											12,211
2015	6,918	7,133	8,557	8,870	8,022	7,268	8,089	5,426	8,846	11,367	8,753	7,101	96,350
2014	6,511	6,887	7,143	8,426	8,365	7,234	7,423	5,756	9,035	10,496	8,316	5,509	91,101
2013	5,341	7,146	7,440	7,349	7,336	8,291	6,696	6,694	8,755	10,136	7,946	7,001	90,131
2012	4,642	6,700	8,189	8,002	11,819	7,532	7,635	7,802	10,478	10,292	8,838	5,409	97,338
2011	3,088	3,880	4,632	5,671	5,418	6,379	5,639	4,804	9,355	9,249	6,138	4,954	69,207
2010	2,760	4,430	5,743	5,964	4,611	4,572	4,364	4,009	6,816	7,653	5,100	4,429	60,451
2009	4,345	6,822	5,675	5,888	6,209	5,883	5,082	3,860	6,470	5,258	5,775	3,795	65,062
2008	4,233	6,749	6,063	6,291	5,530	6,345	5,356	4,112	7,425	8,125	6,571	4,775	71,575
2007	5,606	5,726	6,005	7,264	6,087	6,788	6,232	5,531	8,637	7,425	7,498	3,680	76,479
2006	5,660	6,886	6,468	6,719	6,958	6,411	5,074	6,370	8,692	9,410	6,894	5,922	81,464



FUEL FLOWAGE

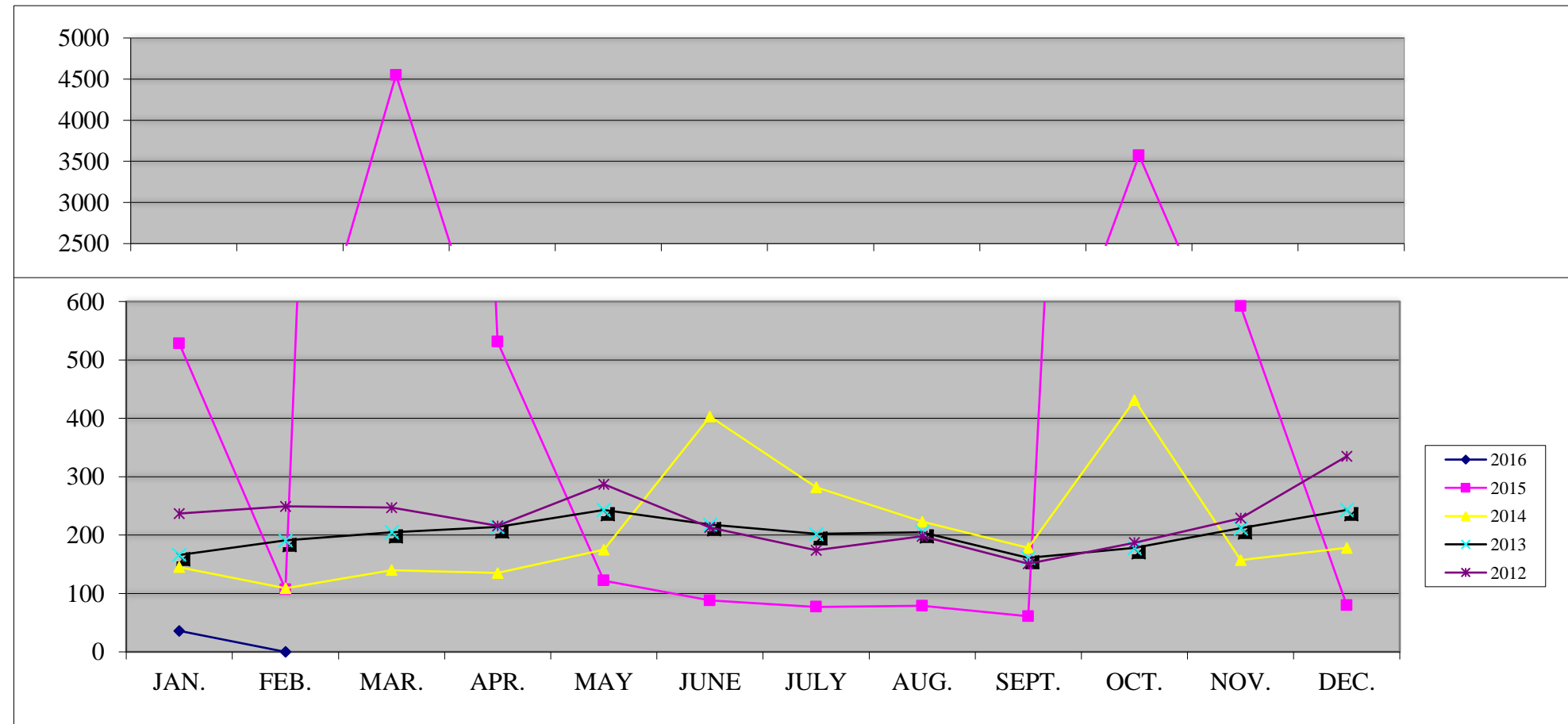
Gallons of Fuel Sold at SLN

	<u>JAN.</u>	<u>FEB.</u>	<u>MAR.</u>	<u>APR.</u>	<u>MAY</u>	<u>JUNE</u>	<u>JULY</u>	<u>AUG.</u>	<u>SEPT.</u>	<u>OCT</u>	<u>NOV.</u>	<u>DEC.</u>	<u>TOTAL</u>
2016	80,221	136,763											216,984
2015	176,746	188,406	290,470	132,543	128,100	126,428	237,782	108,581	143,816	717,601	147,853	89,277	2,487,603
2014	115,573	135,651	112,694	95,549	110,387	282,468	103,108	83,757	91,423	652,207	90,948	97,295	1,971,061
2013	139,227	165,167	138,056	121,295	120,083	282,743	134,677	137,840	126,523	134,024	151,427	106,917	1,757,981
2012	136,995	163,253	303,472	142,770	307,541	365,938	162,584	169,534	163,515	149,404	287,619	241,424	2,594,049
2011	158,199	175,703	311,254	168,490	141,986	261,097	246,687	202,390	178,133	172,586	203,684	166,461	2,386,670
2010	140,149	174,668	276,837	195,019	195,859	333,684	271,029	212,013	170,735	209,067	315,010	269,921	2,763,991
2009	202,765	239,649	182,205	183,738	192,029	306,421	222,991	145,268	171,251	216,190	256,904	162,174	2,481,585
2008	240,060	298,097	293,841	231,396	212,675	319,814	218,666	236,294	245,330	374,857	236,718	206,767	3,114,515
2007	301,504	331,456	315,827	300,209	306,483	433,448	292,410	317,909	323,365	294,420	327,122	234,641	3,778,794
2006	267,924	311,776	297,888	287,710	286,273	286,903	324,655	413,395	388,262	321,437	314,458	316,431	3,817,112



ENPLANEMENTS

	<u>JAN.</u>	<u>FEB.</u>	<u>MAR.</u>	<u>APR.</u>	<u>MAY</u>	<u>JUNE</u>	<u>JULY</u>	<u>AUG.</u>	<u>SEPT.</u>	<u>OCT.</u>	<u>NOV.</u>	<u>DEC.</u>	<u>FAA</u> <u>Adjustment</u>	<u>TOTAL</u>
2016	36	0												36
2015	528	107	4,550	531	122	88	77	79	61	3,574	592	80		10,389
2014	145	109	140	135	175	403	282	223	178	431	157	178	-158	2,398
2013	166	191	205	214	243	218	202	205	161	178	212	243	391	2,829
2012	237	249	247	216	287	213	174	198	151	187	229	335	803	3,526
2011	146	156	205	181	254	258	261	234	225	287	264	234	152	2,857
2010	81	97	139	116	668	166	162	154	178	436	234	510	203	3,144
2009	224	227	275	223	232	210	225	242	439	190	223	129	29	2,868
2008	228	147	224	283	372	396	393	450	524	930	309	398	516	5,170
2007	109	81	133	107	185	226	221	285	241	325	679	353	1,182	4,127
2006	163	140	230	121	176	179	161	150	161	147	293	108	848	2,877



****Adjustment based on Nonscheduled/On-Demand Air Carrier Filings FAA Form 1800-31**

Salina Airport Authority

Statement of Net Assets Prev Year Comparison

03/10/2016

As of February 29, 2016

	Feb 29, 16	Jan 31, 16	\$ Change	Feb 28, 15	\$ Change	% Change
ASSETS						
Current Assets						
Checking/Savings						
Cash in Bank - Bond Funds	319,244	319,243	1	0	319,244	100%
Cash in bank & Petty Cash-Op	811,883	1,383,061	-571,178	541,288	270,595	50%
Total Checking/Savings	1,131,127	1,702,304	-571,177	541,288	589,839	109%
Accounts Receivable						
Accounts Receivable	135,012	130,101	4,911	135,732	-720	-1%
Total Accounts Receivable	135,012	130,101	4,911	135,732	-720	-1%
Other Current Assets						
Agri Land Receivable	58,000	58,000	0	58,000	0	0%
Mill Levy receivable	954,633	954,633	0	932,309	22,324	2%
Other current assets	142,309	145,823	-3,514	143,470	-1,161	-1%
Undeposited Funds	0	1,890	-1,890	2,021	-2,021	-100%
Total Other Current Assets	1,154,942	1,160,346	-5,404	1,135,800	19,142	2%
Total Current Assets	2,421,081	2,992,751	-571,670	1,812,820	608,261	34%
Fixed Assets						
Fixed assets at cost	82,188,170	82,105,283	82,887	81,885,943	302,227	0%
Less accumulated depreciation	-37,204,523	-36,984,360	-220,163	-34,626,698	-2,577,825	-7%
Total Fixed Assets	44,983,647	45,120,923	-137,276	47,259,245	-2,275,598	-5%
Other Assets						
Other assets	4,675	0	4,675	0	4,675	100%
Total Other Assets	4,675	0	4,675	0	4,675	100%
TOTAL ASSETS	47,409,403	48,113,674	-704,271	49,072,065	-1,662,662	-3%
LIABILITIES & EQUITY						
Liabilities						
Current Liabilities						
Accounts Payable						
Accounts payable	139,680	114,060	25,620	71,870	67,810	94%
Total Accounts Payable	139,680	114,060	25,620	71,870	67,810	94%
Total Credit Cards	270	175	95	401	-131	-33%
Other Current Liabilities						
Accrued debt interest payable	207	398,652	-398,445	3,738	-3,531	-94%
Debt, current portion	1,109,894	1,109,894	0	1,025,674	84,220	8%
Deferred Agri Land Revenue	48,333	53,167	-4,834	48,333	0	0%
Deferred Mill Levy revenue	1,659,282	1,825,210	-165,928	1,659,388	-106	-0%
Other current liabilities	196,428	199,560	-3,132	200,045	-3,617	-2%
Total Other Current Liabilities	3,014,144	3,586,483	-572,339	2,937,178	76,966	3%
Total Current Liabilities	3,154,094	3,700,718	-546,624	3,009,449	144,645	5%
Long Term Liabilities						
Capital Lease Payable	28,301	55,696	-27,395	82,296	-53,995	-66%
Debt - Long Term	22,823,445	22,823,445	0	23,023,503	-200,058	-1%
Less current portion	-1,109,894	-1,109,894	0	-1,025,674	-84,220	-8%
Security Deposits Returnable	40,452	37,702	2,750	21,184	19,268	91%
Total Long Term Liabilities	21,782,304	21,806,949	-24,645	22,101,309	-319,005	-1%
Total Liabilities	24,936,398	25,507,667	-571,269	25,110,758	-174,360	-1%
Equity						
Invested in Capital Assets net	22,131,901	22,275,597	-143,696	24,117,440	-1,985,539	-8%
Net assets, Designated	90,000	90,000	0	90,000	0	0%
Net assets, Unrestricted	559,770	416,074	143,696	40,080	519,690	1,297%
Net Income	-308,667	-175,666	-133,001	-286,214	-22,453	-8%
Total Equity	22,473,004	22,606,005	-133,001	23,961,306	-1,488,302	-6%
TOTAL LIABILITIES & EQUITY	47,409,402	48,113,672	-704,270	49,072,064	-1,662,662	-3%

Salina Airport Authority
Profit & Loss Budget Performance
February 2016

1:48 PM
03/10/2016
Accrual Basis

	Feb 16	Budget	\$ Over Budget	% of Budget	Jan - Feb 16	YTD Budget	\$ Over Budget	% of Budget	Annual Budget
Ordinary Income/Expense									
Income									
Airfield revenue									
Fuel Flowage Fees	10,380	13,063	-2,683	79%	16,469	26,125	-9,656	63%	156,750
Hangar rent	31,383	43,313	-11,930	72%	64,981	76,626	-11,645	85%	515,000
Landing fees	50	450	-400	11%	158	900	-742	18%	5,400
Ramp rent	4,754	4,155	599	114%	8,838	8,311	527	106%	49,865
Total Airfield revenue	46,567	60,981	-14,414	76%	90,446	111,962	-21,516	81%	727,015
Building and land rent									
Agri land rent	4,833	4,833	0	100%	9,667	9,667	0	100%	58,000
Building rents									
Short-term leasing	4,794	3,867	927	124%	9,587	7,735	1,852	124%	46,408
Building rents - Other	62,207	64,883	-2,676	96%	126,034	129,765	-3,731	97%	778,592
Total Building rents	67,001	68,750	-1,749	97%	135,621	137,500	-1,879	99%	825,000
Land rent									
Basic Land Rent	5,762	7,192	-1,430	80%	11,365	14,283	-2,918	80%	86,199
Property tax - tenant share	10,833	10,833	0	100%	21,666	21,666	0	100%	129,996
Total Land rent	16,595	18,025	-1,430	92%	33,031	35,949	-2,918	92%	216,195
Tank rent	808	742	66	109%	1,616	1,484	132	109%	8,900
Total Building and land rent	89,237	92,350	-3,113	97%	179,935	184,600	-4,665	97%	1,108,095
Other revenue									
Commissions	896	1,667	-771	54%	2,320	3,333	-1,013	70%	20,000
Other income	6,510	3,417	3,093	191%	6,877	6,833	44	101%	41,000
Total Other revenue	7,406	5,084	2,322	146%	9,197	10,166	-969	90%	61,000
Total Income	143,210	158,415	-15,205	90%	279,578	306,728	-27,150	91%	1,896,110
Gross Income	143,210	158,415	-15,205	90%	279,578	306,728	-27,150	91%	1,896,110
Expense									
Administrative expenses									
A/E, consultants, brokers	4,135	1,993	2,142	207%	8,269	3,986	4,283	207%	23,913
Airport promotion	2,379	833	1,546	286%	3,416	1,667	1,749	205%	10,000
Bad Debt Expense	0	0	0	0%	0	0	0	0%	0
Computer/Network Admin.	925	833	92	111%	2,486	1,667	819	149%	10,000
Dues and subscriptions	970	1,250	-280	78%	3,501	2,500	1,001	140%	15,000
Employee retirement	4,885	4,951	-66	99%	12,409	12,378	31	100%	66,840
FICA and medicare tax expense	3,878	4,051	-173	96%	9,851	10,128	-277	97%	54,690
Industrial development	0	0	0	0%	3,750	3,750	0	100%	15,000
Insurance , property	13,050	12,500	550	104%	17,854	25,000	-7,146	71%	150,000
Insurance, medical	13,884	15,750	-1,866	88%	28,448	31,500	-3,052	90%	189,000
Kansas unemployment tax	0	0	0	0%	0	0	0	0%	1,000
Legal and accounting	0	2,583	-2,583	0%	3,508	5,167	-1,659	68%	31,000
Office salaries	32,454	31,650	804	103%	77,662	79,129	-1,467	98%	427,281
Office Supplies	462	500	-38	92%	1,730	1,000	730	173%	6,000
Other administrative expense									
Merchant Processing Fees	72	57	15	126%	98	114	-16	86%	685
Other administrative expense - C	26	256	-230	10%	319	509	-190	63%	3,065
Total Other administrative expense	98	313	-215	31%	417	623	-206	67%	3,750
Postage	80	250	-170	32%	116	500	-384	23%	3,000
Property tax expense	13,750	13,750	0	100%	27,500	27,500	0	100%	165,000
Special Events	0	83	-83	0%	0	167	-167	0%	1,000
Telephone	1,479	1,313	166	113%	2,779	2,625	154	106%	15,750
Training	0	667	-667	0%	0	1,333	-1,333	0%	8,000
Travel and meetings	269	667	-398	40%	550	1,333	-783	41%	8,000
Total Administrative expenses	92,698	93,937	-1,239	99%	204,246	211,953	-7,707	96%	1,204,224

Salina Airport Authority
Profit & Loss Budget Performance
February 2016

1:48 PM
03/10/2016
Accrual Basis

	Feb 16	Budget	\$ Over Budget	% of Budget	Jan - Feb 16	YTD Budget	\$ Over Budget	% of Budget	Annual Budget
Maintenance expenses									
Airfield maintenance	3,147	1,375	1,772	229%	4,645	2,750	1,895	169%	16,500
Airport Security	0	42	-42	0%	0	83	-83	0%	500
Building maintenance	2,495	3,333	-838	75%	4,369	6,667	-2,298	66%	40,000
Equipment fuel and repairs	3,572	4,417	-845	81%	6,626	8,833	-2,207	75%	53,000
Fire Services	0	125	-125	0%	0	250	-250	0%	1,500
Grounds maintenance	0	292	-292	0%	21	583	-562	4%	3,500
Maintenance salaries	19,042	23,065	-4,023	83%	52,074	57,664	-5,590	90%	311,384
Other maintenance expenses	1,010	1,542	-532	65%	1,502	3,083	-1,581	49%	18,500
Snow removal expense	0	1,083	-1,083	0%	540	2,167	-1,627	25%	13,000
Utilities	20,115	31,888	-11,773	63%	46,853	65,944	-19,091	71%	205,000
Total Maintenance expenses	49,381	67,162	-17,781	74%	116,630	148,024	-31,394	79%	662,884
Total Expense	142,079	161,099	-19,020	88%	320,876	359,977	-39,101	89%	1,867,108
Net Ordinary Income	1,131	-2,684	3,815	-42%	-41,298	-53,249	11,951	78%	29,002
Other Income/Expense									
Other Income									
Capital contributed	0	283,458	-283,458	0%	0	566,917	-566,917	0%	3,401,500
Gain on sale of assets	0	0	0	0%	0	0	0	0%	15,000
Interest income									
Interest income on deposits	50	21	29	238%	84	42	42	200%	250
Total Interest income	50	21	29	238%	84	42	42	200%	250
Mill levy income	166,958	165,928	1,030	101%	332,886	331,856	1,030	100%	1,991,138
Total Other Income	167,008	449,407	-282,399	37%	332,970	898,815	-565,845	37%	5,407,888
Other Expense									
Debt interest expense net									
Bond issue cost	0	3,750	-3,750	0%	0	7,500	-7,500	0%	45,000
Interest Expense on Debt	80,978	79,883	1,095	101%	160,015	159,767	248	100%	958,600
Total Debt interest expense net	80,978	83,633	-2,655	97%	160,015	167,267	-7,252	96%	1,003,600
Depreciation expense	220,163	220,163	0	100%	440,325	440,325	0	100%	2,641,950
Total Other Expense	301,141	303,796	-2,655	99%	600,340	607,592	-7,252	99%	3,645,550
Net Other Income	-134,133	145,611	-279,744	-92%	-267,370	291,223	-558,593	-92%	1,762,338
Net Income	-133,002	142,927	-275,929	-93%	-308,668	237,974	-546,642	-130%	1,791,340

Salina Airport Authority
Capital Additions Budget vs. Actual
As of February 29, 2016

2:05 PM
03/10/2016
Accrual Basis

	Feb 16	Jan - Feb 16	Annual Budget	+/- Annual Budget	% of Annual Budget
ASSETS					
Fixed Assets					
Fixed assets at cost					
Airfield					
AIP-36 Txy E Rehab Const. Ph 1		0	3,515,248	-3,515,248	0%
AIP-37 Txy B & E Rehab Design		15,856	50,497	-34,641	31%
Airfield Improvements					
AMP - Economic Impact Study		0	5,875	-5,875	0%
Airfield Improvements - Other		0	15,000	-15,000	0%
Total Airfield Improvements	0	0	20,875	-20,875	0%
KAIP - 17/35 Slurry Seal		0	392,000	-392,000	0%
Total Airfield	0	15,856	3,978,620	-3,962,764	0%
Buildings & Improvements					
Building improvements					
Bldg. 310 Enviro/Interior Demo		0	65,000	-65,000	0%
Bldg. 409-2 Imps.		18,682	21,500	-2,818	87%
Bldg. Imps. Other		0	20,000	-20,000	0%
Total Building improvements	0	18,682	106,500	-87,818	18%
Pumphouse 305		0	15,000	-15,000	0%
Terminal building improvements					
2015 Terminal Bldg. Remodel	81,095	85,055	228,368	-143,313	37%
2nd Floor Remodel-SAA Admin Ofc	0	0	1	-1	0%
Total Terminal building improvements	81,095	85,055	228,369	-143,314	37%
Total Buildings & Improvements	81,095	103,737	349,869	-246,132	30%
Equipment					
Communications equipment		0	2,000	-2,000	0%
Computer equipment		0	7,500	-7,500	0%
Other Equipment	904	6,221	15,000	-8,779	41%
Shop equipment		0	10,000	-10,000	0%
Vehicles		0	10,000	-10,000	0%
Total Equipment	904	6,221	44,500	-38,279	14%
Land					
Airport Indust. Cent. Imps.		0	15,000	-15,000	0%
Environmental					
Environmental - SAFB	1,263	1,524	15,000	-13,476	10%
Total Environmental	1,263	1,524	15,000	-13,476	10%
Nestle Site Imps.		0	18,500	-18,500	0%
Rail Spur Imps.		0	15,000	-15,000	0%
West Beechcraft Road Imps.		0	2,500	-2,500	0%
Total Land	1,263	1,524	66,000	-64,476	2%
Total Fixed assets at cost	83,262	127,338	4,438,989	-4,311,651	3%

03/10/16

Salina Airport Authority

Significant Capital Expenditures Detail

February 2016

Type	Date	Name	Memo	Amount	Balance
Fixed assets at cost					
Buildings & Improvements					
Terminal building improvements					
2015 Terminal Bldg. Remodel					
Bill	02/23/2016	CBS Manhattan LLC	B120 remodel (replacement cores and keys)	2,173.39	2,173.39
Bill	02/29/2016	Busboom & Rauh Cons...	B120 Terminal Building Remodel - payment no. 1	78,922.00	81,095.39
Total 2015 Terminal Bldg. Remodel				81,095.39	81,095.39
Total Terminal building improvements				81,095.39	81,095.39
Total Buildings & Improvements				81,095.39	81,095.39
Equipment					
Other Equipment					
Bill	02/18/2016	GearGrid Corporation, ...	ARFF station lockers (2) extra parts	904.00	904.00
Total Other Equipment				904.00	904.00
Total Equipment				904.00	904.00
Land					
Environmental					
Environmental - SAFB					
Bill	02/29/2016	Stinson Leonard Street...	Professional services - February 2016	1,262.50	1,262.50
Total Environmental - SAFB				1,262.50	1,262.50
Total Environmental				1,262.50	1,262.50
Total Land				1,262.50	1,262.50
Total Fixed assets at cost				83,261.89	83,261.89
TOTAL				83,261.89	83,261.89

LEASE RENEWAL AGREEMENT

This Lease Renewal Agreement made and entered into this ____ day of March, 2016, by and between the **SALINA AIRPORT AUTHORITY**, a Kansas public corporation of Salina, Saline County, Kansas, (the "Authority") and **WICHITA WINWATER WORKS CO.**, a company authorized to do business in Kansas, with principal offices located at 3612 S. West St., Wichita, KS 67217, herein (the "Lessee").

RECITALS

1. Authority and Lessee entered into a Lease Agreement (the "Lease") on March 21, 2014 covering Building No. 723 and 2.11 acres of land. (the "Premises")
2. Lessee has notified the Authority of their desire to renew the Lease Agreement.

The Parties therefore agree:

2.1. Extension of Lease. The Lease dated March 21, 2014 is hereby renewed and extended for an additional period of two (2) years commencing effective April 1, 2016, and terminating on March 31, 2018. (the "Renewal Term")

2.2. Basic Rental. The Basic Rental for the Renewal Term shall be as follows:

2.2.1. April 1, 2016 – March 31, 2018 \$2,305 per month

2.2.2. The first payment of rental shall be due on April 1, 2016. The Basic Rental shall be payable monthly in advance, and shall be due on the first of each month for that month.

2.3. Other Terms. All of the terms and conditions of the Lease dated March 21, 2014, except as amended by this Renewal Agreement, are hereby ratified and shall be in full force and effect.

2.4. Binding Effect. This agreement shall be binding upon the heirs, beneficiaries, personal representatives, successors, and assigns of the respective parties to this agreement.

The Authority and the Lessee each have caused this Renewal Agreement to be executed by its duly authorized officers on the date shown.

SALINA AIRPORT AUTHORITY

Date _____

By: _____
Troy Vancil, Chairman

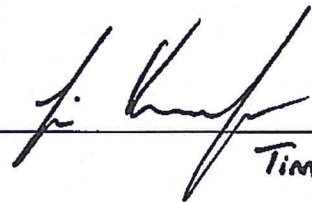
ATTEST

Date _____

By: _____
Jeff Maes, Secretary

WICHITA WINWATER CO.

Date March 7th 2016

By:  _____
Tim Kennedy, President

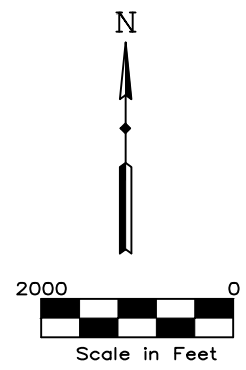
Date _____

By: _____



F:\Public\Facility_Master\BoardEvents\160316BoardLocationMap.dwg

WinWater Works Co. Building 723 Lease Area.



Drawing Number 2152-03-16



3237 ARNOLD, SALINA, KS 67401
(785-827-3914 FAX: 785-827-2221)

None : REVISIONS
KRB : DESIGNED BY
KRB : DRAWN BY
1" = 2000' : SCALE
3/10/16, 10:10 : DATE

SALINA AIRPORT AUTHORITY
Board Meeting Location Map March 2016

SALINA AIRPORT AUTHORITY
RESOLUTION 16-01

**A RESOLUTION EXPRESSING GRATITUDE AND APPRECIATION TO
MICHAEL L. HOPPOCK, FOR HIS SERVICES RENDERED TO THE
CITY OF SALINA AND ITS CITIZENS**

WHEREAS, Michael L. Hoppock, in his capacity as a member of the Board of Directors of the Salina Airport Authority, has unselfishly and with great ability served the City of Salina for a period of three (3) years (March 1, 2013 to February 29, 2016); and,

WHEREAS, as a result of his efforts many lasting improvements have been made to the Salina Regional Airport and the Salina Airport Industrial Center; and,

WHEREAS, the City of Salina has been made a better place to live because of his work and efforts on behalf of his community.

NOW THEREFORE, BE IT RESOLVED by the Board of Directors of the Salina Airport Authority:

Section 1. That the Board of Directors of the Salina Airport Authority, by the adoption of this resolution, expresses its gratitude and appreciation to Michael L. Hoppock for his faithful and dedicated service to the citizens of Salina, Kansas, as a member of the Board of Directors to the Salina Airport Authority.

Section 2. That the Secretary of the Board of Directors is hereby instructed to file the contents of this resolution with the official records of the Salina Airport Authority and to forward a copy of the resolution to Michael L. Hoppock.

Adopted by the Board of Directors of the Salina Airport Authority on this 16th day of March, 2016.

Troy L. Vancil, Chairman

CERTIFICATION OF VICE CHAIRMAN

I, Katherine M. Platten, the duly appointed, qualified, Salina Airport Authority Vice Chairman, Salina, Kansas, do hereby certify that the foregoing Resolution was duly adopted and that said Resolution has been compared by me with the original thereof on file and of record in the office of the Airport Authority, and is a true copy of the whole of said original.

IN WITNESS WHEREOF, I have hereunto set my hand and the seal of the Salina Airport Authority, Salina, Kansas, this 16th day of March 2016.

Katherine M. Platten, Vice Chairman

SALINA AIRPORT AUTHORITY
RESOLUTION 16-02

**A RESOLUTION DESIGNATING THE DEPOSITORIES FOR FUNDS
OF THE SALINA AIRPORT AUTHORITY AND DESIGNATING THE INDIVIDUALS
AUTHORIZED TO SIGN CHECKS ON SAID ACCOUNTS AND
DIRECTING HOW SAID CHECKS ARE TO BE SIGNED:**

BE IT RESOLVED, that Sunflower Bank, N.A., UMB National Bank of America, First Bank Kansas, Bank of America, N.A., and Bennington State Bank, all of Salina, Kansas be and are hereby designated depositories of the Salina Airport Authority and that funds so deposited may be withdrawn upon a check, draft, note or other order of the Authority.

BE IT FURTHER RESOLVED, that all checks, drafts, notes or orders drawn against said accounts be signed by either the Chairman, Vice-Chairman, Secretary, Treasurer, or Past Chairman, and either the Executive Director, Director of Administration and Finance or Director of Facilities and Construction.

Troy L. Vancil
Katherine M. Platten
Jeff E. Maes
Brian Weisel
Daran R. Neuschafer
Timothy F. Rogers, A.A.E.
Michelle R. Swanson, C.M.
Kenneth R. Bieker

Chairman
Vice Chairman
Secretary
Treasurer
Past-Chairman
Executive Director
Director of Administration and Finance
Director of Facilities and Construction

BE IT FURTHER RESOLVED, that all of the above banks are authorized and directed to honor and charge to the account of the Authority all checks drawn against the account of the Authority which bear the actual signature of at least one of the above named persons and may bear the facsimile signatures of two of the other named persons, after specimens of such facsimile signatures have been filed with the above designated banks, unless such banks have been notified of the limitation or qualification upon the use of such specimen facsimile signatures by anyone of the aforesaid officers of the Authority.

BE IT FURTHER RESOLVED, that said banks are hereby authorized and directed to honor and pay all checks, drafts, notes or orders so drawn, whether such checks, drafts, notes or orders be payable to the order of any such person signing and/or countersigning said checks, drafts, notes or orders, or any of such persons in their individual capacities or not, and whether such checks, drafts, notes or orders are deposited to the individual credit of any of the other officers or not. This resolution shall continue in force and said banks may consider the facts concerning the holders of said office, respectively, and their signatures to be and continue as set forth in the certificate of the Secretary or Treasurer, accompanying a copy of this resolution when delivered to said banks or in any similar subsequent certificate, until written notice to the contrary is duly served on said banks.

Adopted by the Board of Directors of the Salina Airport Authority on this 16th day of March, 2016.

Troy L. Vancil, Chairman



CERTIFICATION OF SECRETARY

I, Jeff E. Maes, the duly appointed, qualified, Salina Airport Authority Secretary, Salina, Kansas, do hereby certify that the foregoing Resolution was duly adopted at a meeting of the Salina Airport Authority, Salina, Kansas held on the 16th day of March, 2016, and that said Resolution has been compared by me with the original thereof on file and of record in the office of the Airport Authority, and is a true copy of the whole of said original.

IN WITNESS WHEREOF, I have hereunto set my hand and the seal of the Salina Airport Authority, Salina, Kansas, this 16th day of March, 2016.

Jeff E. Maes, Secretary





Director of Facilities and Operations

3237 Arnold Ave.

Salina, Kansas 67401

Telephone (785) 827-3914 • FAX (785) 827-2221 • E-Mail kennyb@salair.org

DATE: 03/16/2016
TO: SAA Board of Directors
FROM: Kenny Bieker
Director of Facilities and Construction
SUBJECT: Project Updates

AIP Project No. 37 – Taxiway Alpha, Bravo & Echo Design

FAA has decided on a rehab of the pavement by milling the surface and placing a new 2.5" asphalt surface course over the milled surface. This, in the SAA's opinion, is the best most economical approach.

KAIP 2017 Submittals

KDOT has not released their second set of selections for KDOT grant funds yet. This project is for a slurry seal on runway 17-35 on the south 7500 feet of the runway about 50' wide.

Terminal Building

The contractors are coming along nicely on the terminal building remodel project. A second bid will be submitted for the second floor remodel plans put together by SAA.

Hangar 959 Electrical

SAA was approached by Westar Energy with a request to update the electrical system in hangar 959. If any action has not taken place by October of 2016 there will be higher energy costs added to the bills due to the efficiency rating of the electrical system. I have begun a survey of the electrical system layout to come up with a plan to upgrade the system. I'm in the early stages of the survey but its looking like some upgrades may be easy to construct but all the plans will have to be approved by the City and Westar.