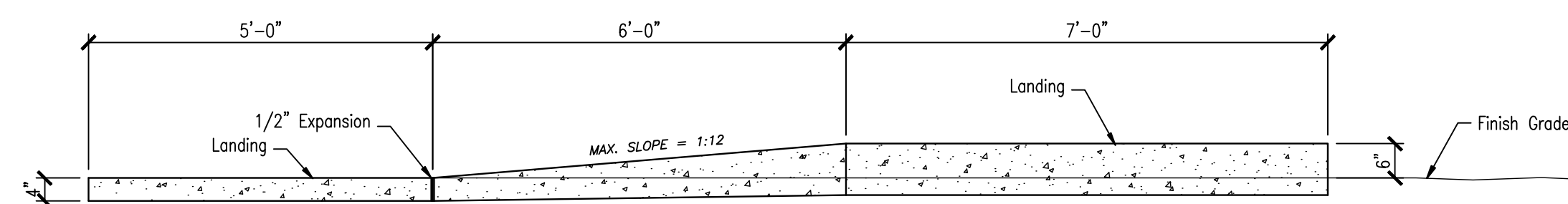


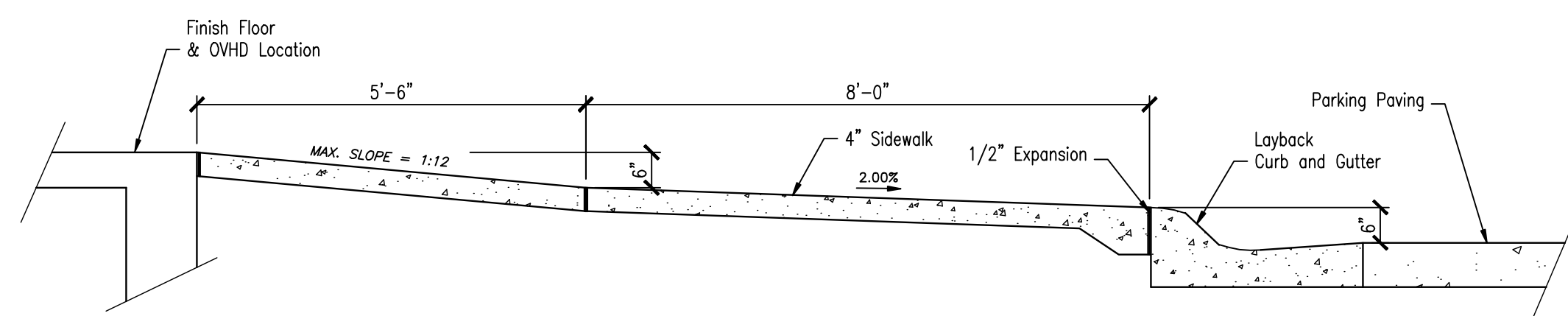
A SITE PLAN
Scale: 1" = 30'

NOTE:

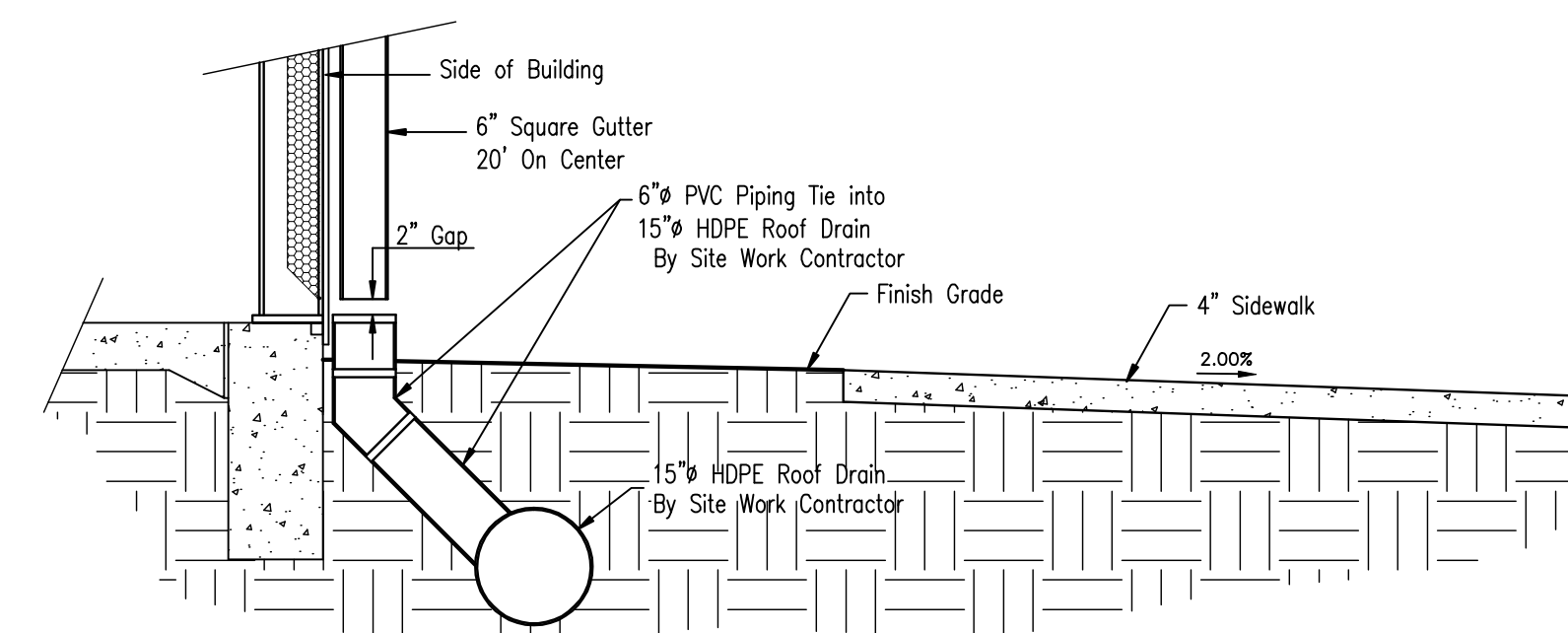
1. Refer to the Civil Engineering Drawings for Site Plan Dimensions and Elevations.
2. All site development work including demolition, cut and fill, rough grading, parking lot construction, permanent fencing is being done under a separate contract. Refer to Bucher Willis & Ratliff Corp. site development documents.
3. Paving work on this project includes all sidewalks, door stoops, ramps, and concrete paving adjacent to hanger doors.



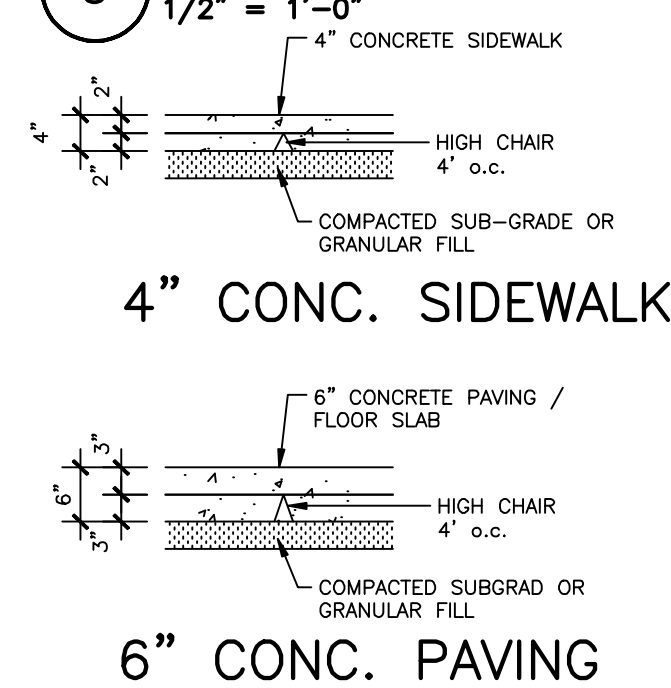
1 Ramp Section Detail
1/2" = 1'-0"



2 Ramp Section Detail @ OVHD
1/2" = 1'-0"



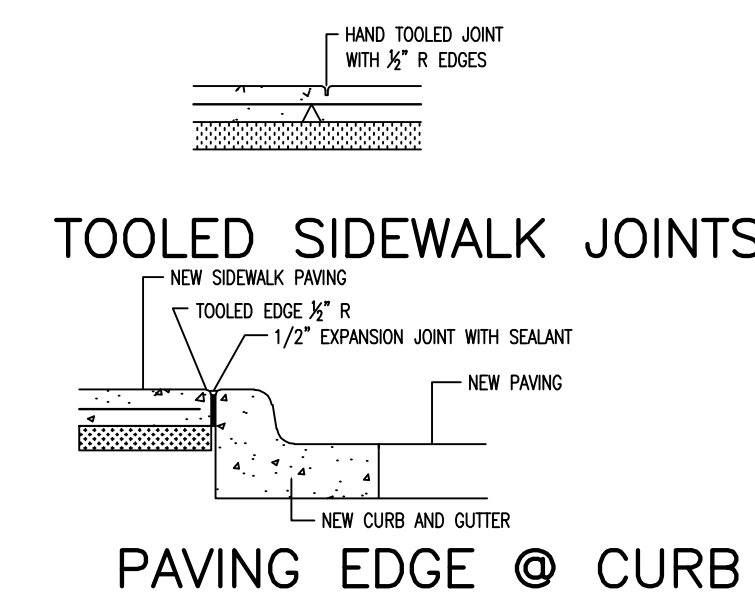
3 Underground Down Spout Detail
1/2" = 1'-0"



4" CONC. SIDEWALK

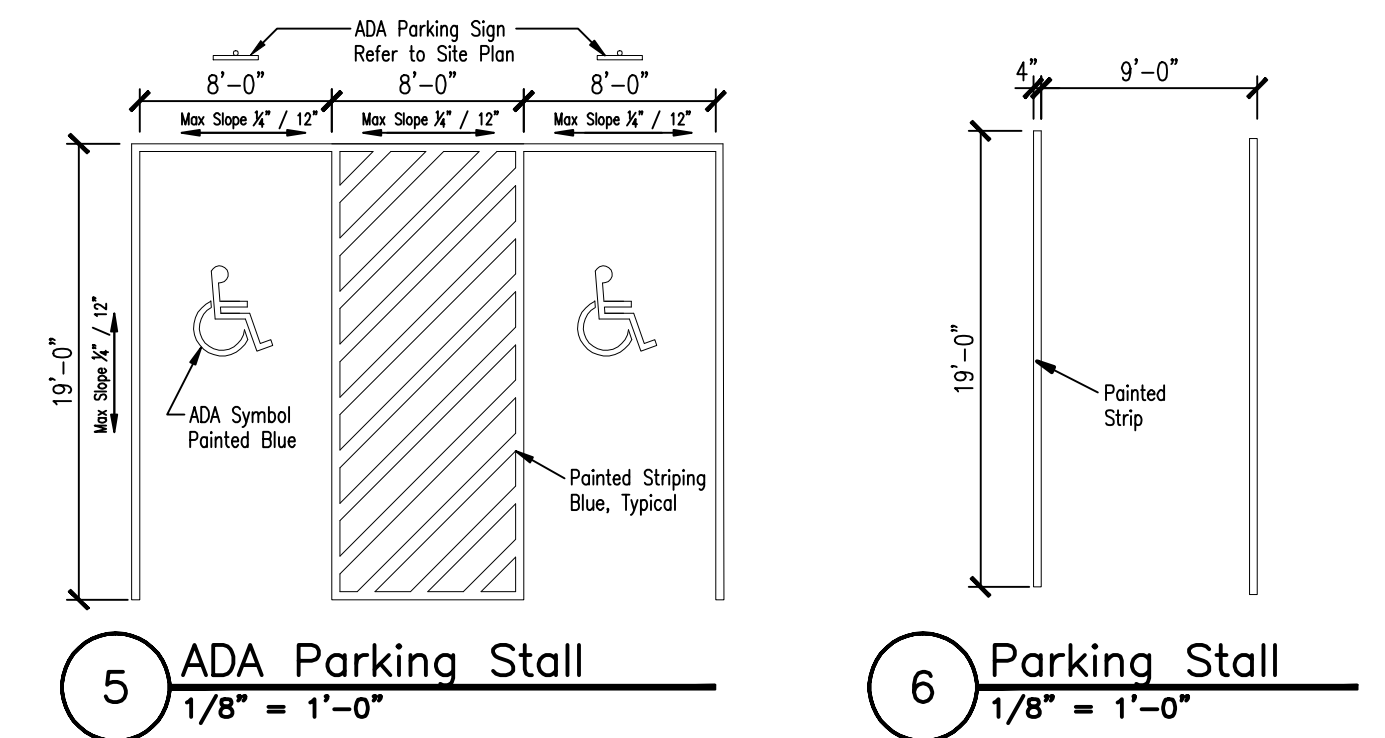
6" CONC. PAVING

DOWELLED JOINT
TYPICAL AT POUR TERMINATION AND AT EXPANSION JOINTS



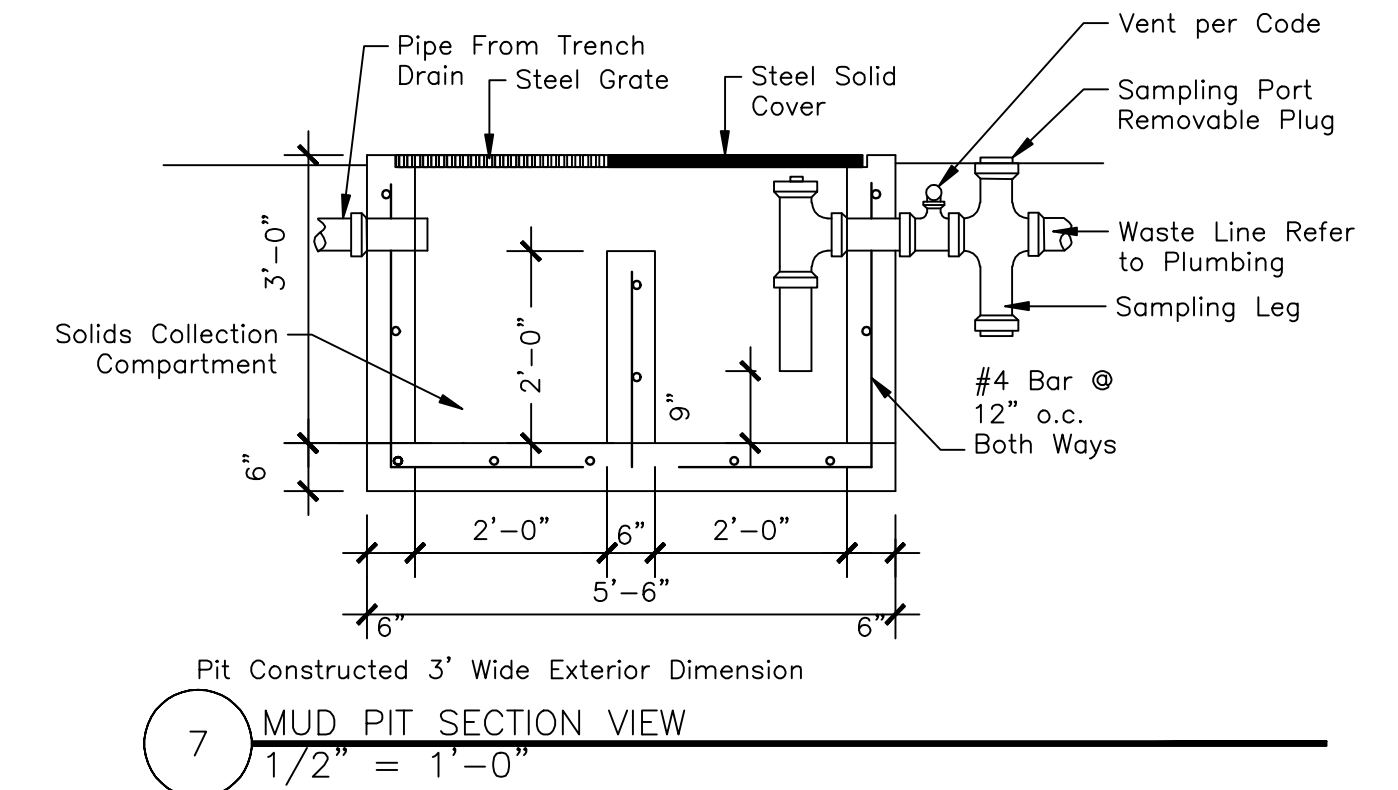
TOOLED SIDEWALK JOINTS

PAVING EDGE @ CURB

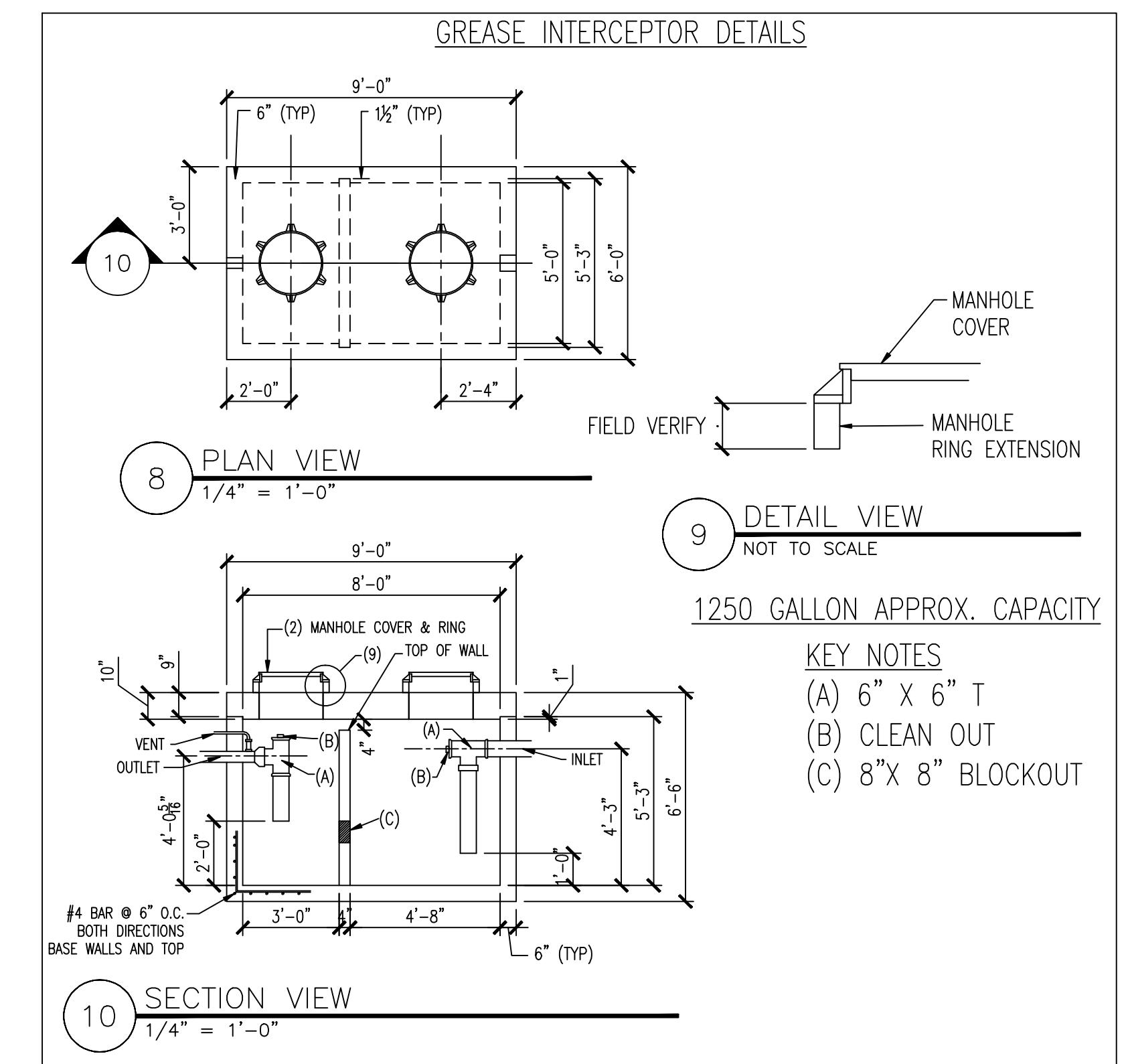


5 ADA Parking Stall
1/8" = 1'-0"

6 Parking Stall
1/8" = 1'-0"



7 MUD PIT SECTION VIEW
1/2" = 1'-0"



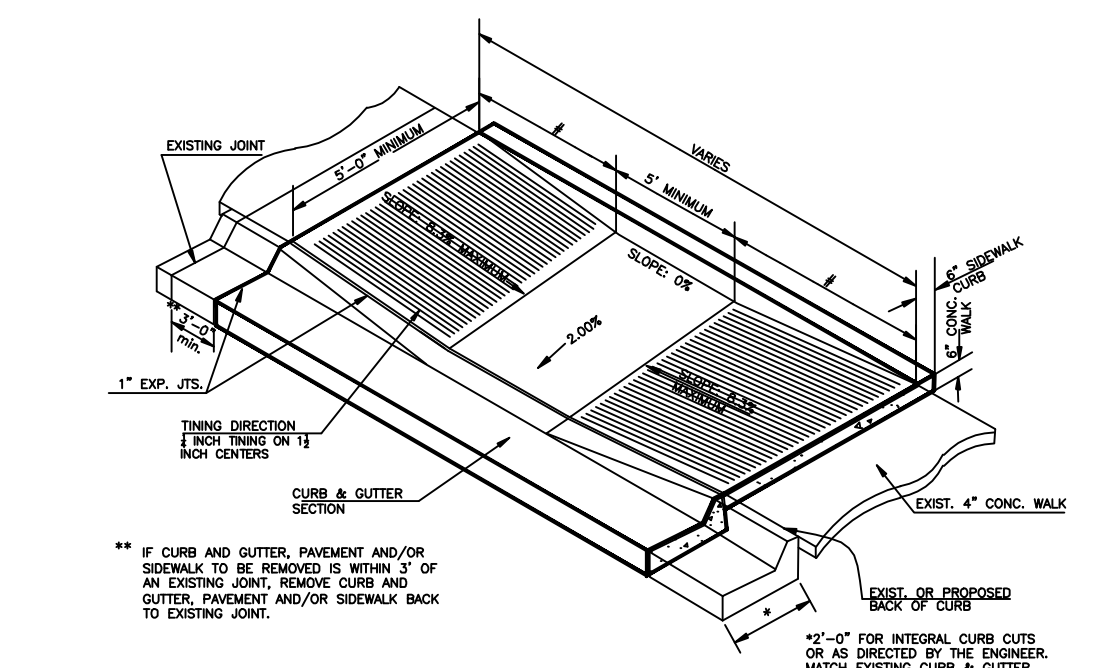
8 PLAN VIEW
1/4" = 1'-0"

9 DETAIL VIEW
NOT TO SCALE

10 SECTION VIEW
1/4" = 1'-0"

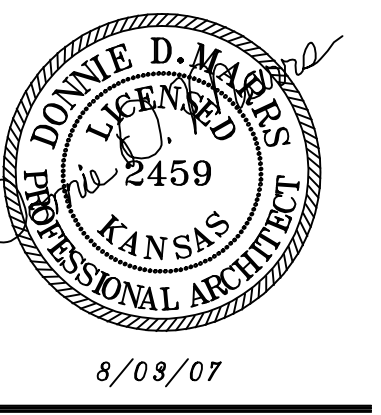
1250 GALLON APPROX. CAPACITY

- KEY NOTES**
- (A) 6" X 6" T
 - (B) CLEAN OUT
 - (C) 8" X 8" BLOCKOUT



11 ISO of Sidewalk Ramp
1/2" = 1'-0"

Revision:
DMA
DMA Architects, PA
2035 E. Iron #100
Salina, Kansas 67401
Phone: 785-823-6002
Fax: 785-823-2910
E-mail: donmarrs@dmapa.com
donmarrs@dmapa.com



8/03/07
REPRODUCTION: This document and the information contained herein may not be reproduced or excerpted from without the expressed written consent of DMA Architects, PA. Unauthorized copying, disclosure or construction use are prohibited by Copyright Law

Project:
Salina Airport Authority
Hanger 600
Arnold Court / Salina, KS

Drawing:
Site Plan and Details

Job: 0706
Drawn: JM / DM
Date: 8-03-07
C1 OF 1