

Charting the course for global success.



Salina Airport Authority  
**RFQ Design & Engineering Services**  
**North Hangar Development**

RUNWAY 17-35 (12,300' x 150')

TWF

TWH

TAXIWAY A

TWG

B777

B777



B777



Hangar Specs  
 Door Width = 272 FT  
 Door Height = 70 FT  
 Hangar Space 89,000 SQ FT

Office/Shop Space  
 300 x 30 = 9,000 SQ FT

HEIN AVE

TONY'S RD

SCANLAN RD

1 Vision Aviation

Salina Airport Authority Property Boundary Line

Drawing Number 3186-10-23  
**SALINA** Airport Authority

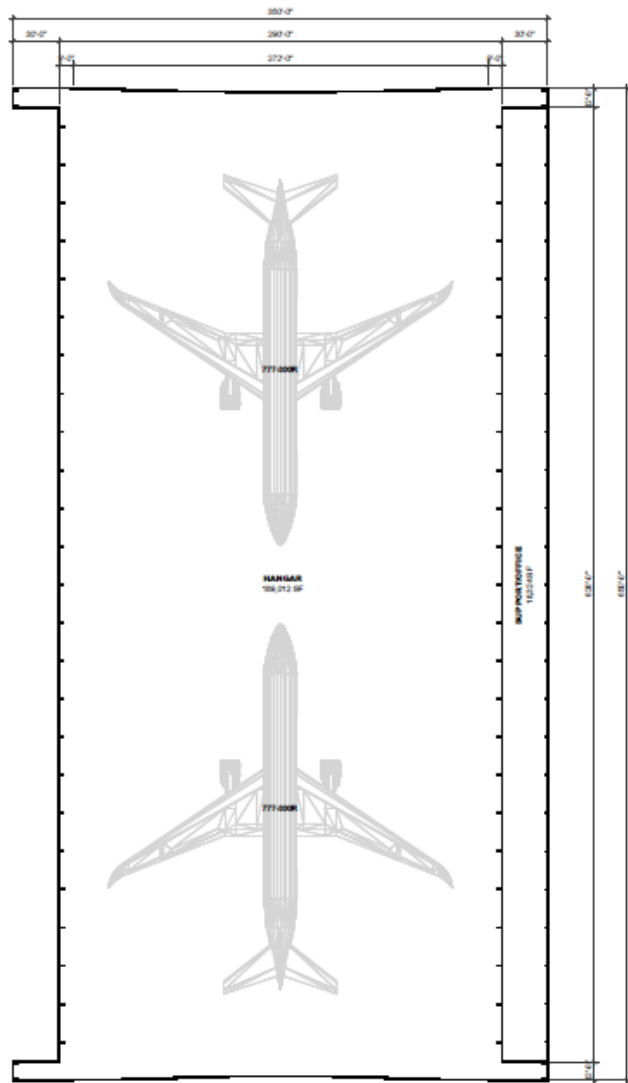
3237 ARNOLD, SALINA, KS 67401  
 (785-827-3914 FAX: 785-827-2221)

None : REVISIONS  
 MWC : DESIGNED BY  
 MWC : DRAWN BY  
 - : SCALE  
 10/19/20, 110 : DATE

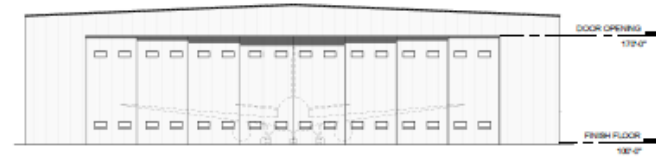
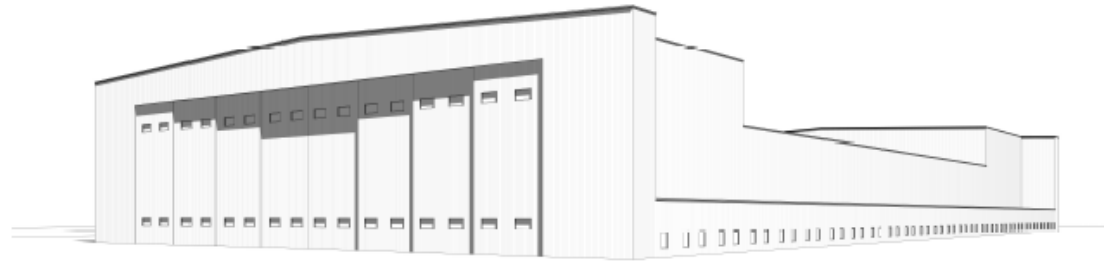


SALINA AIRPORT AUTHORITY  
 North Ramp Development MRO Hangar

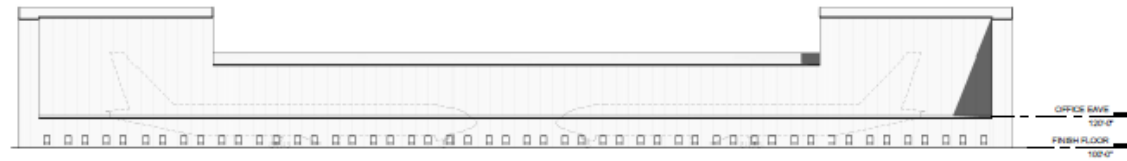
1  
 OF  
 1



**A FLOOR PLAN**  
1" = 40'-0"



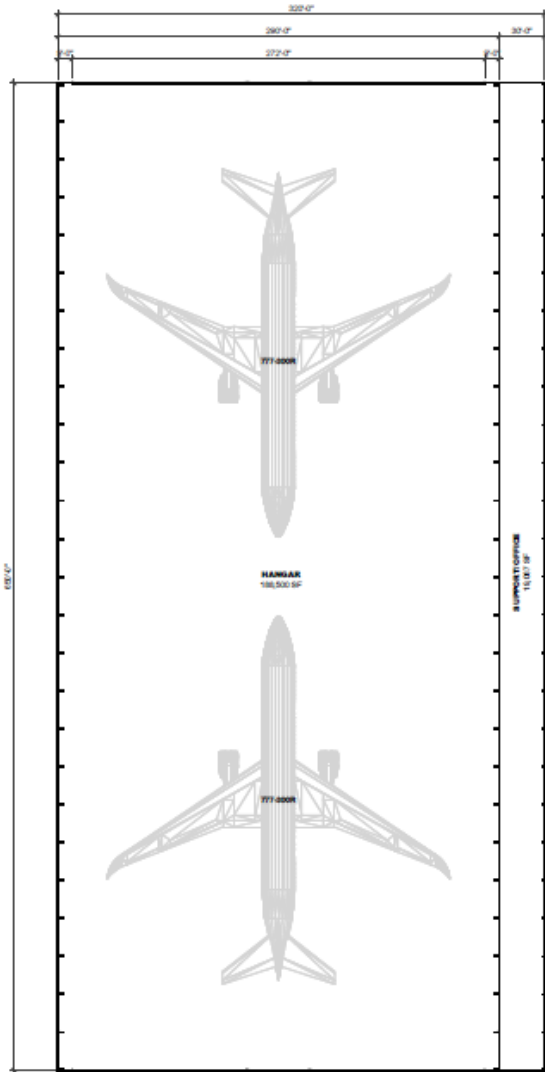
**A1 ELEVATION - NORTH/SOUTH**  
1" = 40'-0"



**A2 ELEVATION - EAST**  
1" = 40'-0"



**A3 ELEVATION - WEST**  
1" = 40'-0"



**B FLOOR PLAN**  
1" = 40'-0"



**B1 ELEVATION - NORTH/SOUTH**  
1" = 40'-0"



**B2 ELEVATION - EAST**  
1" = 40'-0"



**B3 ELEVATION - WEST**  
1" = 40'-0"



